



# SPEC CPU®2017 Floating Point Speed Result

Copyright 2017-2020 Standard Performance Evaluation Corporation

## ASUSTeK Computer Inc.

ASUS ESC8000 G4(Z11PG-D24) Server System  
(1.90 GHz, Intel Xeon Bronze 3204)

SPECspeed®2017\_fp\_base = 45.9

SPECspeed®2017\_fp\_peak = 46.4

CPU2017 License: 9016

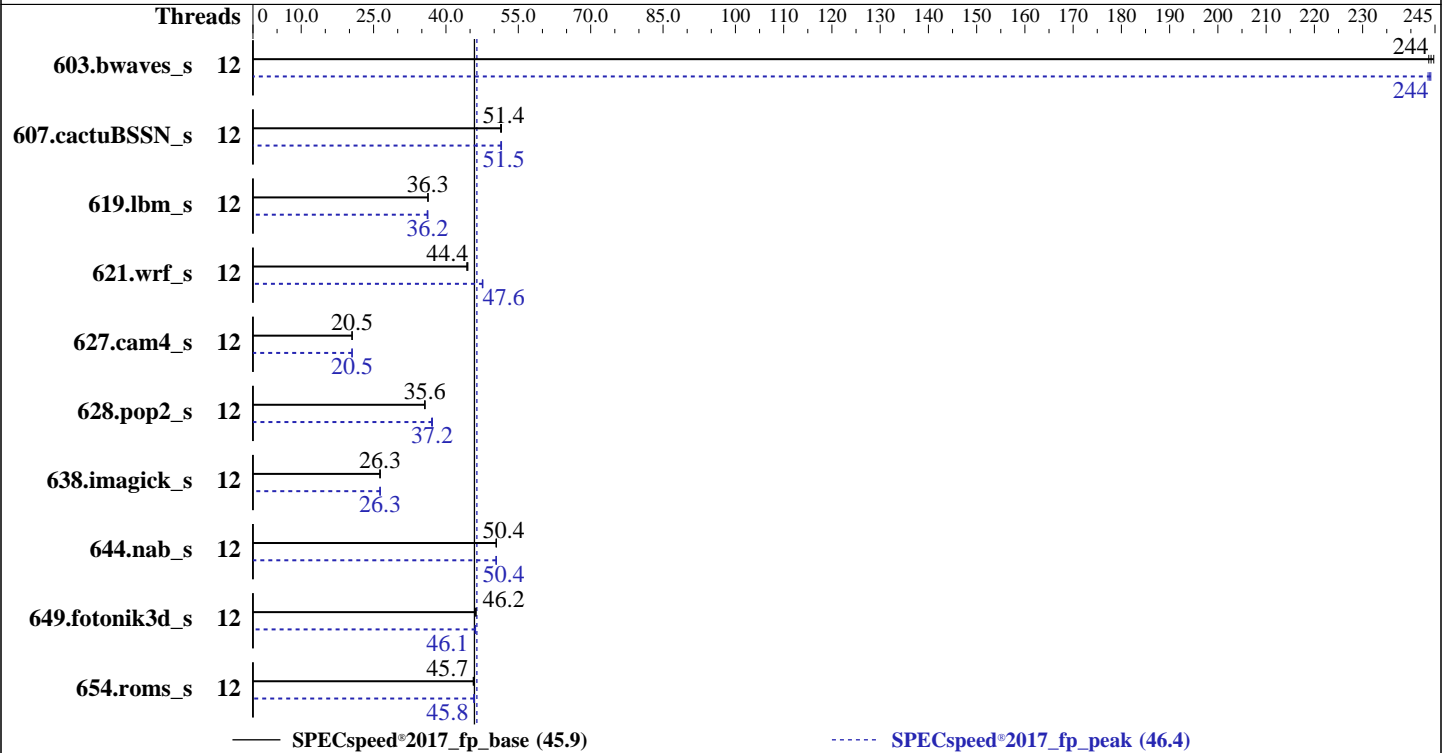
Test Sponsor: ASUSTeK Computer Inc.

Tested by: ASUSTeK Computer Inc.

Test Date: Aug-2019

Hardware Availability: Apr-2019

Software Availability: May-2019



### Hardware

CPU Name: Intel Xeon Bronze 3204  
 Max MHz: 1900  
 Nominal: 1900  
 Enabled: 12 cores, 2 chips  
 Orderable: 1,2 chips  
 Cache L1: 32 KB I + 32 KB D on chip per core  
 L2: 1 MB I+D on chip per core  
 L3: 8.25 MB I+D on chip per chip  
 Other: None  
 Memory: 768 GB (24 x 32 GB 2Rx4 PC4-2933Y-R, running at 2133)  
 Storage: 1 x 1 TB SATA SSD  
 Other: None

### Software

OS: SUSE Linux Enterprise Server 15  
 Kernel 4.12.14-23-default  
 Compiler: C/C++: Version 19.0.4.227 of Intel C/C++ Compiler Build 20190416 for Linux;  
 Fortran: Version 19.0.4.227 of Intel Fortran Compiler Build 20190416 for Linux  
 Parallel: Yes  
 Firmware: Version 5102 released Feb-2019  
 File System: xfs  
 System State: Run level 3 (multi-user)  
 Base Pointers: 64-bit  
 Peak Pointers: 64-bit  
 Other: None  
 Power Management: --



# SPEC CPU®2017 Floating Point Speed Result

Copyright 2017-2020 Standard Performance Evaluation Corporation

## ASUSTeK Computer Inc.

ASUS ESC8000 G4(Z11PG-D24) Server System  
(1.90 GHz, Intel Xeon Bronze 3204)

SPECspeed®2017\_fp\_base = 45.9

SPECspeed®2017\_fp\_peak = 46.4

CPU2017 License: 9016

Test Sponsor: ASUSTeK Computer Inc.

Tested by: ASUSTeK Computer Inc.

Test Date: Aug-2019

Hardware Availability: Apr-2019

Software Availability: May-2019

## Results Table

Benchmark	Base							Peak						
	Threads	Seconds	Ratio	Seconds	Ratio	Seconds	Ratio	Threads	Seconds	Ratio	Seconds	Ratio	Seconds	Ratio
603.bwaves_s	12	241	245	<u>242</u>	<u>244</u>	242	244	12	242	244	<u>242</u>	<u>244</u>	242	244
607.cactuBSSN_s	12	<b>324</b>	<b>51.4</b>	324	51.5	325	51.3	12	<b>324</b>	<b>51.5</b>	324	51.5	325	51.4
619.lbm_s	12	<b>144</b>	<b>36.3</b>	144	36.3	144	36.3	12	<b>145</b>	<b>36.2</b>	145	36.2	145	36.1
621.wrf_s	12	297	44.6	298	44.3	<b>298</b>	<b>44.4</b>	12	278	47.5	<b>278</b>	<b>47.6</b>	277	47.7
627.cam4_s	12	431	20.6	<b>431</b>	<b>20.5</b>	432	20.5	12	<b>431</b>	<b>20.5</b>	431	20.6	432	20.5
628.pop2_s	12	333	35.7	<b>333</b>	<b>35.6</b>	334	35.6	12	<b>319</b>	<b>37.2</b>	319	37.2	321	37.0
638.imagick_s	12	548	26.3	547	26.4	<b>548</b>	<b>26.3</b>	12	547	26.4	<b>548</b>	<b>26.3</b>	548	26.3
644.nab_s	12	<b>346</b>	<b>50.4</b>	347	50.4	346	50.4	12	347	50.4	<b>347</b>	<b>50.4</b>	346	50.4
649.fotonik3d_s	12	<b>197</b>	<b>46.2</b>	198	46.1	197	46.3	12	198	46.0	<b>198</b>	<b>46.1</b>	198	46.1
654.roms_s	12	345	45.7	<b>344</b>	<b>45.7</b>	344	45.8	12	343	45.9	344	45.8	<b>343</b>	<b>45.8</b>

SPECspeed®2017\_fp\_base = **45.9**

SPECspeed®2017\_fp\_peak = **46.4**

Results appear in the order in which they were run. Bold underlined text indicates a median measurement.

## Operating System Notes

Stack size set to unlimited using "ulimit -s unlimited"

## General Notes

Environment variables set by runcpu before the start of the run:

KMP\_AFFINITY = "granularity=fine,compact"

LD\_LIBRARY\_PATH = "/spec2017\_19u4/lib/intel64"

OMP\_STACKSIZE = "192M"

Binaries compiled on a system with 1x Intel Core i9-799X CPU + 32GB RAM  
memory using Redhat Enterprise Linux 7.5

Transparent Huge Pages enabled by default

Prior to runcpu invocation

Filesystem page cache synced and cleared with:

```
sync; echo 3> /proc/sys/vm/drop_caches
```

NA: The test sponsor attests, as of date of publication, that CVE-2017-5754 (Meltdown) is mitigated in the system as tested and documented.

Yes: The test sponsor attests, as of date of publication, that CVE-2017-5753 (Spectre variant 1) is mitigated in the system as tested and documented.

Yes: The test sponsor attests, as of date of publication, that CVE-2017-5715 (Spectre variant 2) is mitigated in the system as tested and documented.

## Platform Notes

BIOS Configuration:

VT-d = Disabled

Patrol Scrub = Disabled

ENERGY\_PERF\_BIAS\_CFG mode = performance

(Continued on next page)



# SPEC CPU®2017 Floating Point Speed Result

Copyright 2017-2020 Standard Performance Evaluation Corporation

## ASUSTeK Computer Inc.

ASUS ESC8000 G4(Z11PG-D24) Server System  
(1.90 GHz, Intel Xeon Bronze 3204)

SPECspeed®2017\_fp\_base = 45.9

SPECspeed®2017\_fp\_peak = 46.4

CPU2017 License: 9016

Test Sponsor: ASUSTeK Computer Inc.

Tested by: ASUSTeK Computer Inc.

Test Date: Aug-2019

Hardware Availability: Apr-2019

Software Availability: May-2019

### Platform Notes (Continued)

CSM Support = Disabled  
 Engine Boost = Level3(Max)  
 LLC dead line allc = Disabled  
 SR-IOV Support = Disabled  
 Sysinfo program /spec2017\_19u4/bin/sysinfo  
 Rev: r5974 of 2018-05-19 9bcde8f2999c33d61f64985e45859ea9  
 running on linux-gh78 Wed Aug 7 18:13:10 2019

SUT (System Under Test) info as seen by some common utilities.  
 For more information on this section, see  
<https://www.spec.org/cpu2017/Docs/config.html#sysinfo>

From /proc/cpuinfo  
 model name : Intel(R) Xeon(R) Bronze 3204 CPU @ 1.90GHz  
 2 "physical id"s (chips)  
 12 "processors"  
 cores, siblings (Caution: counting these is hw and system dependent. The following excerpts from /proc/cpuinfo might not be reliable. Use with caution.)  
 cpu cores : 6  
 siblings : 6  
 physical 0: cores 0 1 2 3 4 5  
 physical 1: cores 0 1 2 3 4 5

From lscpu:  
 Architecture: x86\_64  
 CPU op-mode(s): 32-bit, 64-bit  
 Byte Order: Little Endian  
 CPU(s): 18  
 On-line CPU(s) list: 0-11  
 Off-line CPU(s) list: 12-17  
 Thread(s) per core: 1  
 Core(s) per socket: 6  
 Socket(s): 2  
 NUMA node(s): 2  
 Vendor ID: GenuineIntel  
 CPU family: 6  
 Model: 85  
 Model name: Intel(R) Xeon(R) Bronze 3204 CPU @ 1.90GHz  
 Stepping: 6  
 CPU MHz: 1900.000  
 CPU max MHz: 1900.0000  
 CPU min MHz: 800.0000  
 BogoMIPS: 3800.00  
 Virtualization: VT-x  
 L1d cache: 32K  
 L1i cache: 32K  
 L2 cache: 1024K

(Continued on next page)



# SPEC CPU®2017 Floating Point Speed Result

Copyright 2017-2020 Standard Performance Evaluation Corporation

## ASUSTeK Computer Inc.

ASUS ESC8000 G4(Z11PG-D24) Server System  
(1.90 GHz, Intel Xeon Bronze 3204)

SPECspeed®2017\_fp\_base = 45.9

SPECspeed®2017\_fp\_peak = 46.4

CPU2017 License: 9016

Test Sponsor: ASUSTeK Computer Inc.

Tested by: ASUSTeK Computer Inc.

Test Date: Aug-2019

Hardware Availability: Apr-2019

Software Availability: May-2019

### Platform Notes (Continued)

```

L3 cache:                8448K
NUMA node0 CPU(s):       0-5
NUMA node1 CPU(s):       6-11
Flags:                    fpu vme de pse tsc msr pae mce cx8 apic sep mtrr pge mca cmov
pat pse36 clflush dts acpi mmx fxsr sse sse2 ss ht tm pbe syscall nx pdpe1gb rdtscp
lm constant_tsc art arch_perfmon pebs bts rep_good nopl xtopology nonstop_tsc cpuid
aperfperf tsc_known_freq pni pclmulqdq dtes64 monitor ds_cpl vmx smx est tm2 ssse3
sdbg fma cx16 xtpr pdcm pcid dca sse4_1 sse4_2 x2apic movbe popcnt
tsc_deadline_timer aes xsave avx f16c rdrand lahf_lm abm 3dnowprefetch cpuid_fault
epb cat_l3 cdp_l3 invpcid_single mba tpr_shadow vnmi flexpriority ept vpid fsgsbase
tsc_adjust bmi1 hle avx2 smep bmi2 erms invpcid rtm cqm mpx rdt_a avx512f avx512dq
rdseed adx smap clflushopt clwb intel_pt avx512cd avx512bw avx512vl xsaveopt xsavec
xgetbv1 xsaves cqm_llc cqm_occup_llc cqm_mbm_total cqm_mbm_local ibpb ibrs stibp
dtherm arat pln pts hwp hwp_act_window hwp_epp hwp_pkg_req pku ospke avx512_vnni
arch_capabilities ssbd

```

```

/proc/cpuinfo cache data
cache size : 8448 KB

```

```

From numactl --hardware WARNING: a numactl 'node' might or might not correspond to a
physical chip.

```

```

available: 2 nodes (0-1)
node 0 cpus: 0 1 2 3 4 5
node 0 size: 385580 MB
node 0 free: 380574 MB
node 1 cpus: 6 7 8 9 10 11
node 1 size: 386995 MB
node 1 free: 383866 MB
node distances:
node    0    1
 0:   10   21
 1:   21   10

```

```

From /proc/meminfo
MemTotal:       791117712 kB
HugePages_Total:       0
Hugepagesize:     2048 kB

```

```

From /etc/*release* /etc/*version*
os-release:
NAME="SLES"
VERSION="15"
VERSION_ID="15"
PRETTY_NAME="SUSE Linux Enterprise Server 15"
ID="sles"
ID_LIKE="suse"
ANSI_COLOR="0;32"

```

(Continued on next page)



# SPEC CPU®2017 Floating Point Speed Result

Copyright 2017-2020 Standard Performance Evaluation Corporation

**ASUSTeK Computer Inc.**  
ASUS ESC8000 G4(Z11PG-D24) Server System  
(1.90 GHz, Intel Xeon Bronze 3204)

SPECspeed®2017\_fp\_base = 45.9

SPECspeed®2017\_fp\_peak = 46.4

**CPU2017 License:** 9016  
**Test Sponsor:** ASUSTeK Computer Inc.  
**Tested by:** ASUSTeK Computer Inc.

**Test Date:** Aug-2019  
**Hardware Availability:** Apr-2019  
**Software Availability:** May-2019

## Platform Notes (Continued)

CPE\_NAME="cpe:/o:suse:sles:15"

```
uname -a:
Linux linux-gh78 4.12.14-23-default #1 SMP Tue May 29 21:04:44 UTC 2018 (cd0437b)
x86_64 x86_64 x86_64 GNU/Linux
```

Kernel self-reported vulnerability status:

```
CVE-2017-5754 (Meltdown): Not affected
CVE-2017-5753 (Spectre variant 1): Mitigation: __user pointer sanitization
CVE-2017-5715 (Spectre variant 2): Mitigation: Indirect Branch Restricted Speculation,
IBPB, IBRS_FW
```

run-level 3 Aug 7 09:18

```
SPEC is set to: /spec2017_19u4
Filesystem      Type  Size  Used Avail Use% Mounted on
/dev/sda4       xfs   929G  21G  908G   3% /
```

Additional information from dmidecode follows. WARNING: Use caution when you interpret this section. The 'dmidecode' program reads system data which is "intended to allow hardware to be accurately determined", but the intent may not be met, as there are frequent changes to hardware, firmware, and the "DMTF SMBIOS" standard.

```
BIOS American Megatrends Inc. 5102 02/11/2019
Memory:
24x Samsung M393A4K40CB2-CVF 32 GB 2 rank 2933, configured at 2133
```

(End of data from sysinfo program)

## Compiler Version Notes

```
=====  
C | 619.lbm_s(base, peak) 638.imagick_s(base, peak)
  | 644.nab_s(base, peak)
=====
```

```
Intel(R) C Intel(R) 64 Compiler for applications running on Intel(R) 64,
Version 19.0.4.227 Build 20190416
Copyright (C) 1985-2019 Intel Corporation. All rights reserved.
```

```
=====  
C++, C, Fortran | 607.cactuBSSN_s(base, peak)
=====
```

```
Intel(R) C++ Intel(R) 64 Compiler for applications running on Intel(R) 64,
Version 19.0.4.227 Build 20190416
Copyright (C) 1985-2019 Intel Corporation. All rights reserved.
```

(Continued on next page)



# SPEC CPU®2017 Floating Point Speed Result

Copyright 2017-2020 Standard Performance Evaluation Corporation

## ASUSTeK Computer Inc.

ASUS ESC8000 G4(Z11PG-D24) Server System  
(1.90 GHz, Intel Xeon Bronze 3204)

SPECspeed®2017\_fp\_base = 45.9

SPECspeed®2017\_fp\_peak = 46.4

**CPU2017 License:** 9016

**Test Sponsor:** ASUSTeK Computer Inc.

**Tested by:** ASUSTeK Computer Inc.

**Test Date:** Aug-2019

**Hardware Availability:** Apr-2019

**Software Availability:** May-2019

### Compiler Version Notes (Continued)

Intel(R) C Intel(R) 64 Compiler for applications running on Intel(R) 64,  
Version 19.0.4.227 Build 20190416

Copyright (C) 1985-2019 Intel Corporation. All rights reserved.

Intel(R) Fortran Intel(R) 64 Compiler for applications running on Intel(R)  
64, Version 19.0.4.227 Build 20190416

Copyright (C) 1985-2019 Intel Corporation. All rights reserved.

=====  
Fortran | 603.bwaves\_s(base, peak) 649.fotonik3d\_s(base, peak)  
| 654.roms\_s(base, peak)

=====  
Intel(R) Fortran Intel(R) 64 Compiler for applications running on Intel(R)  
64, Version 19.0.4.227 Build 20190416

Copyright (C) 1985-2019 Intel Corporation. All rights reserved.

=====  
Fortran, C | 621.wrf\_s(base, peak) 627.cam4\_s(base, peak)  
| 628.pop2\_s(base, peak)

=====  
Intel(R) Fortran Intel(R) 64 Compiler for applications running on Intel(R)  
64, Version 19.0.4.227 Build 20190416

Copyright (C) 1985-2019 Intel Corporation. All rights reserved.

Intel(R) C Intel(R) 64 Compiler for applications running on Intel(R) 64,  
Version 19.0.4.227 Build 20190416

Copyright (C) 1985-2019 Intel Corporation. All rights reserved.

### Base Compiler Invocation

C benchmarks:

icc -m64 -std=c11

Fortran benchmarks:

ifort -m64

Benchmarks using both Fortran and C:

ifort -m64 icc -m64 -std=c11

Benchmarks using Fortran, C, and C++:

icpc -m64 icc -m64 -std=c11 ifort -m64



# SPEC CPU®2017 Floating Point Speed Result

Copyright 2017-2020 Standard Performance Evaluation Corporation

## ASUSTeK Computer Inc.

ASUS ESC8000 G4(Z11PG-D24) Server System  
(1.90 GHz, Intel Xeon Bronze 3204)

SPECspeed®2017\_fp\_base = 45.9

SPECspeed®2017\_fp\_peak = 46.4

**CPU2017 License:** 9016

**Test Sponsor:** ASUSTeK Computer Inc.

**Tested by:** ASUSTeK Computer Inc.

**Test Date:** Aug-2019

**Hardware Availability:** Apr-2019

**Software Availability:** May-2019

## Base Portability Flags

```
603.bwaves_s: -DSPEC_LP64
607.cactuBSSN_s: -DSPEC_LP64
619.lbm_s: -DSPEC_LP64
621.wrf_s: -DSPEC_LP64 -DSPEC_CASE_FLAG -convert big_endian
627.cam4_s: -DSPEC_LP64 -DSPEC_CASE_FLAG
628.pop2_s: -DSPEC_LP64 -DSPEC_CASE_FLAG -convert big_endian
-assume byterecl
638.imagick_s: -DSPEC_LP64
644.nab_s: -DSPEC_LP64
649.fotonik3d_s: -DSPEC_LP64
654.roms_s: -DSPEC_LP64
```

## Base Optimization Flags

C benchmarks:

```
-xCORE-AVX512 -ipo -O3 -no-prec-div -qopt-prefetch
-ffinite-math-only -qopt-mem-layout-trans=4 -qopenmp -DSPEC_OPENMP
```

Fortran benchmarks:

```
-DSPEC_OPENMP -xCORE-AVX512 -ipo -O3 -no-prec-div -qopt-prefetch
-ffinite-math-only -qopt-mem-layout-trans=4 -qopenmp
-nostandard-realloc-lhs
```

Benchmarks using both Fortran and C:

```
-xCORE-AVX512 -ipo -O3 -no-prec-div -qopt-prefetch
-ffinite-math-only -qopt-mem-layout-trans=4 -qopenmp -DSPEC_OPENMP
-nostandard-realloc-lhs
```

Benchmarks using Fortran, C, and C++:

```
-xCORE-AVX512 -ipo -O3 -no-prec-div -qopt-prefetch
-ffinite-math-only -qopt-mem-layout-trans=4 -qopenmp -DSPEC_OPENMP
-nostandard-realloc-lhs
```

## Peak Compiler Invocation

C benchmarks:

```
icc -m64 -std=c11
```

Fortran benchmarks:

```
ifort -m64
```

(Continued on next page)



# SPEC CPU®2017 Floating Point Speed Result

Copyright 2017-2020 Standard Performance Evaluation Corporation

**ASUSTeK Computer Inc.**

ASUS ESC8000 G4(Z11PG-D24) Server System  
(1.90 GHz, Intel Xeon Bronze 3204)

SPECspeed®2017\_fp\_base = 45.9

SPECspeed®2017\_fp\_peak = 46.4

**CPU2017 License:** 9016

**Test Sponsor:** ASUSTeK Computer Inc.

**Tested by:** ASUSTeK Computer Inc.

**Test Date:** Aug-2019

**Hardware Availability:** Apr-2019

**Software Availability:** May-2019

## Peak Compiler Invocation (Continued)

Benchmarks using both Fortran and C:

```
ifort -m64 icc -m64 -std=c11
```

Benchmarks using Fortran, C, and C++:

```
icpc -m64 icc -m64 -std=c11 ifort -m64
```

## Peak Portability Flags

Same as Base Portability Flags

## Peak Optimization Flags

C benchmarks:

```
-xCORE-AVX512 -ipo -O3 -no-prec-div -qopt-prefetch  
-ffinite-math-only -qopt-mem-layout-trans=4 -qopenmp -DSPEC_OPENMP
```

Fortran benchmarks:

```
603.bwaves_s: -prof-gen(pass 1) -prof-use(pass 2) -DSPEC_SUPPRESS_OPENMP  
-DSPEC_OPENMP -O2 -xCORE-AVX512 -qopt-prefetch -ipo -O3  
-ffinite-math-only -no-prec-div -qopt-mem-layout-trans=4  
-qopenmp -nostandard-realloc-lhs
```

649.fotonik3d\_s: Same as 603.bwaves\_s

```
654.roms_s: -DSPEC_OPENMP -xCORE-AVX512 -ipo -O3 -no-prec-div  
-qopt-prefetch -ffinite-math-only -qopt-mem-layout-trans=4  
-qopenmp -nostandard-realloc-lhs
```

Benchmarks using both Fortran and C:

```
621.wrf_s: -prof-gen(pass 1) -prof-use(pass 2) -O2 -xCORE-AVX512  
-qopt-prefetch -ipo -O3 -ffinite-math-only -no-prec-div  
-qopt-mem-layout-trans=4 -DSPEC_SUPPRESS_OPENMP -qopenmp  
-DSPEC_OPENMP -nostandard-realloc-lhs
```

```
627.cam4_s: -xCORE-AVX512 -ipo -O3 -no-prec-div -qopt-prefetch  
-ffinite-math-only -qopt-mem-layout-trans=4 -qopenmp  
-DSPEC_OPENMP -nostandard-realloc-lhs
```

628.pop2\_s: Same as 621.wrf\_s

(Continued on next page)





# SPEC CPU®2017 Floating Point Speed Result

Copyright 2017-2020 Standard Performance Evaluation Corporation

**ASUSTeK Computer Inc.**

ASUS ESC8000 G4(Z11PG-D24) Server System  
(1.90 GHz, Intel Xeon Bronze 3204)

SPECspeed®2017\_fp\_base = 45.9

SPECspeed®2017\_fp\_peak = 46.4

**CPU2017 License:** 9016

**Test Sponsor:** ASUSTeK Computer Inc.

**Tested by:** ASUSTeK Computer Inc.

**Test Date:** Aug-2019

**Hardware Availability:** Apr-2019

**Software Availability:** May-2019

## Peak Optimization Flags (Continued)

Benchmarks using Fortran, C, and C++:

```
-xCORE-AVX512 -ipo -O3 -no-prec-div -qopt-prefetch  
-ffinite-math-only -qopt-mem-layout-trans=4 -qopenmp -DSPEC_OPENMP  
-nostandard-realloc-lhs
```

The flags files that were used to format this result can be browsed at

<http://www.spec.org/cpu2017/flags/ASUSTekPlatform-Settings-z11-V2.0-revE.html>

<http://www.spec.org/cpu2017/flags/Intel-ic19.0u1-official-linux64.2019-07-09.html>

You can also download the XML flags sources by saving the following links:

<http://www.spec.org/cpu2017/flags/ASUSTekPlatform-Settings-z11-V2.0-revE.xml>

<http://www.spec.org/cpu2017/flags/Intel-ic19.0u1-official-linux64.2019-07-09.xml>

SPEC CPU and SPECspeed are registered trademarks of the Standard Performance Evaluation Corporation. All other brand and product names appearing in this result are trademarks or registered trademarks of their respective holders.

For questions about this result, please contact the tester. For other inquiries, please contact [info@spec.org](mailto:info@spec.org).

Tested with SPEC CPU®2017 v1.0.5 on 2019-08-07 06:13:09-0400.

Report generated on 2020-12-31 16:29:35 by CPU2017 PDF formatter v6255.

Originally published on 2019-09-17.