



SPEC® CINT2006 Result

Copyright 2006-2017 Standard Performance Evaluation Corporation

Lenovo Global Technology

SPECint®_rate2006 = 4810

ThinkSystem SR950
(2.10 GHz, Intel Xeon Platinum 8170)

SPECint_rate_base2006 = 4610

CPU2006 license: 9017

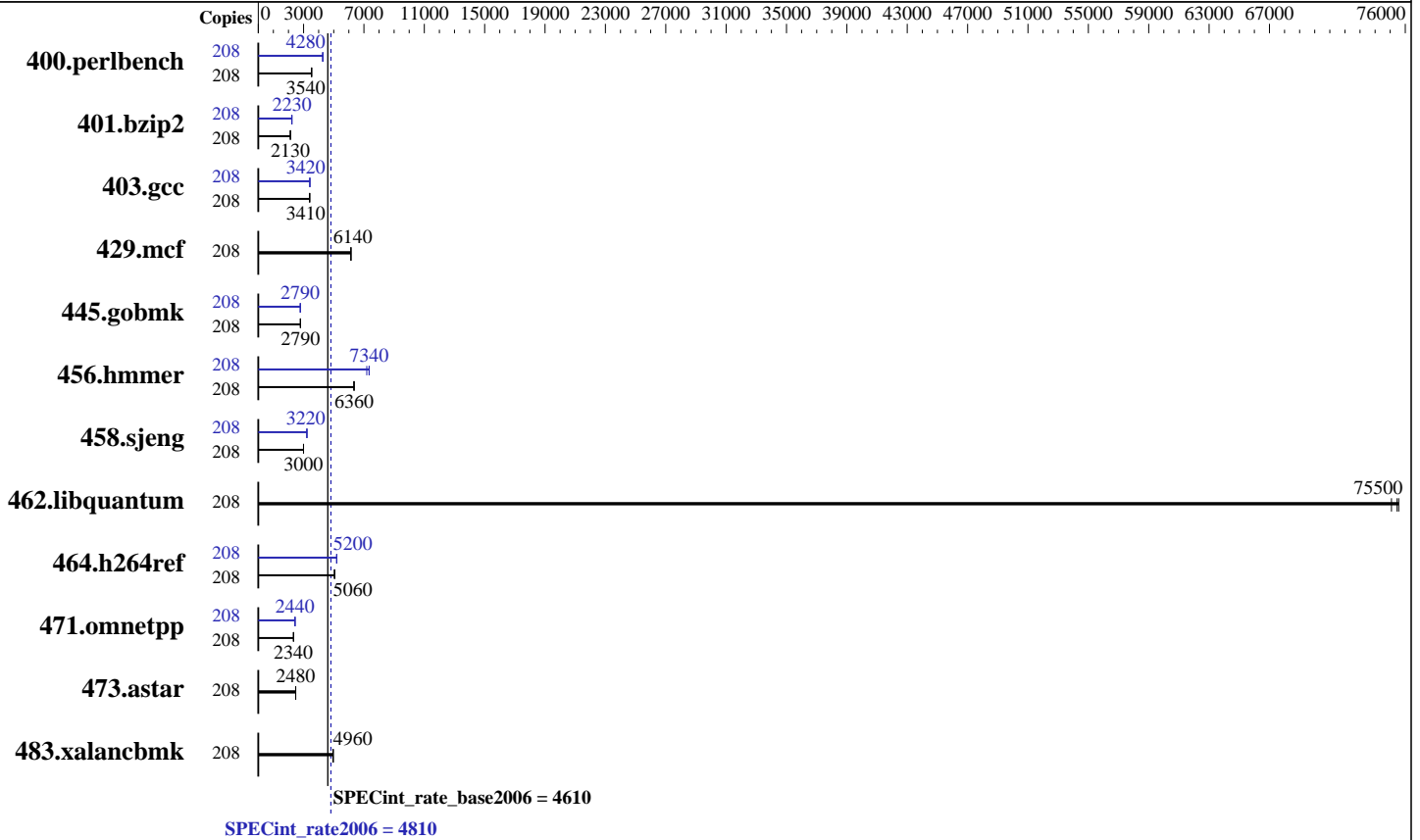
Test date: Oct-2017

Test sponsor: Lenovo Global Technology

Hardware Availability: Sep-2017

Tested by: Lenovo Global Technology

Software Availability: Apr-2017



Hardware

CPU Name: Intel Xeon Platinum 8170
 CPU Characteristics: Intel Turbo Boost Technology up to 3.70 GHz
 CPU MHz: 2100
 FPU: Integrated
 CPU(s) enabled: 104 cores, 4 chips, 26 cores/chip, 2 threads/core
 CPU(s) orderable: 2,4 chips
 Primary Cache: 32 KB I + 32 KB D on chip per core
 Secondary Cache: 1 MB I+D on chip per core
 L3 Cache: 35.75 MB I+D on chip per chip
 Other Cache: None
 Memory: 1536 GB (48 x 32 GB 2Rx4 PC4-2666V-R)
 Disk Subsystem: 800 GB tmpfs
 Other Hardware: None

Software

Operating System: SUSE Linux Enterprise Server 12 SP2 (x86_64)
 Kernel 4.4.21-69-default
 Compiler: C/C++: Version 17.0.3.191 of Intel C/C++ Compiler for Linux
 Auto Parallel: Yes
 File System: tmpfs
 System State: Run level 3 (multi-user)
 Base Pointers: 32-bit
 Peak Pointers: 32/64-bit
 Other Software: Microquill SmartHeap V10.2



SPEC CINT2006 Result

Copyright 2006-2017 Standard Performance Evaluation Corporation

Lenovo Global Technology

SPECint_rate2006 = 4810

ThinkSystem SR950
(2.10 GHz, Intel Xeon Platinum 8170)

SPECint_rate_base2006 = 4610

CPU2006 license: 9017

Test date: Oct-2017

Test sponsor: Lenovo Global Technology

Hardware Availability: Sep-2017

Tested by: Lenovo Global Technology

Software Availability: Apr-2017

Results Table

Benchmark	Base							Peak						
	Copies	Seconds	Ratio	Seconds	Ratio	Seconds	Ratio	Copies	Seconds	Ratio	Seconds	Ratio	Seconds	Ratio
400.perlbench	208	<u>575</u>	<u>3540</u>	576	3530	575	3540	208	<u>474</u>	<u>4280</u>	474	4280	477	4260
401.bzip2	208	944	2130	942	2130	<u>944</u>	<u>2130</u>	208	<u>901</u>	<u>2230</u>	905	2220	900	2230
403.gcc	208	491	3410	<u>491</u>	<u>3410</u>	494	3390	208	<u>490</u>	<u>3420</u>	491	3410	490	3420
429.mcf	208	309	6140	309	6140	<u>309</u>	<u>6140</u>	208	309	6140	309	6140	<u>309</u>	<u>6140</u>
445.gobmk	208	781	2790	<u>781</u>	<u>2790</u>	783	2790	208	784	2780	783	2790	<u>783</u>	<u>2790</u>
456.hammer	208	307	6320	305	6360	<u>305</u>	<u>6360</u>	208	<u>264</u>	<u>7340</u>	270	7190	264	7350
458.sjeng	208	840	2990	840	3000	<u>840</u>	<u>3000</u>	208	782	3220	781	3220	<u>781</u>	<u>3220</u>
462.libquantum	208	<u>57.1</u>	<u>75500</u>	57.4	75100	57.0	75600	208	<u>57.1</u>	<u>75500</u>	57.4	75100	57.0	75600
464.h264ref	208	908	5070	<u>910</u>	<u>5060</u>	913	5040	208	885	5200	<u>885</u>	<u>5200</u>	887	5190
471.omnetpp	208	558	2330	<u>557</u>	<u>2340</u>	557	2340	208	<u>534</u>	<u>2440</u>	535	2430	533	2440
473.astar	208	<u>589</u>	<u>2480</u>	590	2480	588	2480	208	<u>589</u>	<u>2480</u>	590	2480	588	2480
483.xalancbmk	208	288	4980	<u>290</u>	<u>4960</u>	290	4940	208	288	4980	<u>290</u>	<u>4960</u>	290	4940

Results appear in the order in which they were run. Bold underlined text indicates a median measurement.

Submit Notes

The numactl mechanism was used to bind copies to processors. The config file option 'submit' was used to generate numactl commands to bind each copy to a specific processor. For details, please see the config file.

Operating System Notes

```
Stack size set to unlimited using "ulimit -s unlimited"
Tmpfs filesystem can be set with:
mount -t tmpfs -o size=800g tmpfs /home
Process tuning setting:
echo 50000 > /proc/sys/kernel/sched_cfs_bandwidth_slice_us
echo 240000000 > /proc/sys/kernel/sched_latency_ns
echo 5000000 > /proc/sys/kernel/sched_migration_cost_ns
echo 100000000 > /proc/sys/kernel/sched_min_granularity_ns
echo 150000000 > /proc/sys/kernel/sched_wakeup_granularity_ns
```

Platform Notes

```
BIOS configuration:
Choose Operating Mode set to Maximum Performance
SNC set to Enable
DCU Streamer Prefetcher set to Disable
Stale AtoS set to Enable
LLC dead line alloc set to Disable
Sysinfo program /home/cpu2006-1.2-ic17.0u3/config/sysinfo.rev6993
Revision 6993 of 2015-11-06 (b5e8d4b4eb51ed28d7f98696cbe290c1)
running on Proton4S-SUSE12SP2 Mon Oct 23 04:39:18 2017
```

Continued on next page



SPEC CINT2006 Result

Copyright 2006-2017 Standard Performance Evaluation Corporation

Lenovo Global Technology

SPECint_rate2006 = 4810

ThinkSystem SR950
(2.10 GHz, Intel Xeon Platinum 8170)

SPECint_rate_base2006 = 4610

CPU2006 license: 9017

Test date: Oct-2017

Test sponsor: Lenovo Global Technology

Hardware Availability: Sep-2017

Tested by: Lenovo Global Technology

Software Availability: Apr-2017

Platform Notes (Continued)

This section contains SUT (System Under Test) info as seen by some common utilities. To remove or add to this section, see: <http://www.spec.org/cpu2006/Docs/config.html#sysinfo>

From /proc/cpuinfo

```

model name      : Intel(R) Xeon(R) Platinum 8170 CPU @ 2.10GHz
 4 "physical id"s (chips)
 208 "processors"
cores, siblings (Caution: counting these is hw and system dependent. The
following excerpts from /proc/cpuinfo might not be reliable. Use with
caution.)
cpu cores      : 26
siblings       : 52
physical 0:    : cores 0 1 2 3 4 5 6 8 9 10 11 12 13 16 17 18 19 20 21 22 24 25
                26 27 28 29
physical 1:    : cores 0 1 2 3 4 5 6 8 9 10 11 12 13 16 17 18 19 20 21 22 24 25
                26 27 28 29
physical 2:    : cores 0 1 2 3 4 5 6 8 9 10 11 12 13 16 17 18 19 20 21 22 24 25
                26 27 28 29
physical 3:    : cores 0 1 2 3 4 5 6 8 9 10 11 12 13 16 17 18 19 20 21 22 24 25
                26 27 28 29
cache size     : 36608 KB

```

From /proc/meminfo

```

MemTotal:      1584765780 kB
HugePages_Total: 0
Hugepagesize:  2048 kB

```

From /etc/*release* /etc/*version*

```

SuSE-release:
SUSE Linux Enterprise Server 12 (x86_64)
VERSION = 12
PATCHLEVEL = 2
# This file is deprecated and will be removed in a future service pack or
release.
# Please check /etc/os-release for details about this release.
os-release:
NAME="SLES"
VERSION="12-SP2"
VERSION_ID="12.2"
PRETTY_NAME="SUSE Linux Enterprise Server 12 SP2"
ID="sles"
ANSI_COLOR="0;32"
CPE_NAME="cpe:/o:suse:sles:12:sp2"

```

uname -a:

```

Linux Proton4S-SUSE12SP2 4.4.21-69-default #1 SMP Tue Oct 25 10:58:20 UTC
2016 (9464f67) x86_64 x86_64 x86_64 GNU/Linux

```

run-level 3 Oct 23 04:36

Continued on next page



SPEC CINT2006 Result

Copyright 2006-2017 Standard Performance Evaluation Corporation

Lenovo Global Technology

SPECint_rate2006 = 4810

ThinkSystem SR950
(2.10 GHz, Intel Xeon Platinum 8170)

SPECint_rate_base2006 = 4610

CPU2006 license: 9017

Test date: Oct-2017

Test sponsor: Lenovo Global Technology

Hardware Availability: Sep-2017

Tested by: Lenovo Global Technology

Software Availability: Apr-2017

Platform Notes (Continued)

SPEC is set to: /home/cpu2006-1.2-ic17.0u3

Filesystem	Type	Size	Used	Avail	Use%	Mounted on
tmpfs	tmpfs	800G	5.0G	796G	1%	/home

Additional information from dmidecode:

Warning: Use caution when you interpret this section. The 'dmidecode' program reads system data which is "intended to allow hardware to be accurately determined", but the intent may not be met, as there are frequent changes to hardware, firmware, and the "DMTF SMBIOS" standard.

BIOS Lenovo -[PSE105X-1.00]- 08/17/2017

Memory:

48x NO DIMM NO DIMM

48x Samsung M393A4K40BB2-CTD 32 GB 2 rank 2666 MHz

(End of data from sysinfo program)

General Notes

Environment variables set by runspec before the start of the run:

LD_LIBRARY_PATH = "/home/cpu2006-1.2-ic17.0u3/lib/ia32:/home/cpu2006-1.2-ic17.0u3/lib/intel64:/home/cpu2006-1.2-ic17.0u3/sh10.2"

Binaries compiled on a system with 1x Intel Core i7-4790 CPU + 32GB RAM memory using Redhat Enterprise Linux 7.2

Transparent Huge Pages enabled by default

Filesystem page cache cleared with:

shell invocation of 'sync; echo 3 > /proc/sys/vm/drop_caches' prior to run

runspec command invoked through numactl i.e.:

numactl --interleave=all runspec <etc>

Base Compiler Invocation

C benchmarks:

icc -m32 -L/opt/intel/compilers_and_libraries_2017/linux/lib/ia32

C++ benchmarks:

icpc -m32 -L/opt/intel/compilers_and_libraries_2017/linux/lib/ia32

Base Portability Flags

400.perlbench: -D_FILE_OFFSET_BITS=64 -DSPEC_CPU_LINUX_IA32

401.bzip2: -D_FILE_OFFSET_BITS=64

403.gcc: -D_FILE_OFFSET_BITS=64

429.mcf: -D_FILE_OFFSET_BITS=64

445.gobmk: -D_FILE_OFFSET_BITS=64

456.hmmer: -D_FILE_OFFSET_BITS=64

Continued on next page

Standard Performance Evaluation Corporation

info@spec.org

http://www.spec.org/



SPEC CINT2006 Result

Copyright 2006-2017 Standard Performance Evaluation Corporation

Lenovo Global Technology

SPECint_rate2006 = 4810

ThinkSystem SR950
(2.10 GHz, Intel Xeon Platinum 8170)

SPECint_rate_base2006 = 4610

CPU2006 license: 9017

Test date: Oct-2017

Test sponsor: Lenovo Global Technology

Hardware Availability: Sep-2017

Tested by: Lenovo Global Technology

Software Availability: Apr-2017

Base Portability Flags (Continued)

```

458.sjeng: -D_FILE_OFFSET_BITS=64
462.libquantum: -D_FILE_OFFSET_BITS=64 -DSPEC_CPU_LINUX
464.h264ref: -D_FILE_OFFSET_BITS=64
471.omnetpp: -D_FILE_OFFSET_BITS=64
473.astar: -D_FILE_OFFSET_BITS=64
483.xalancbmk: -D_FILE_OFFSET_BITS=64 -DSPEC_CPU_LINUX

```

Base Optimization Flags

C benchmarks:

```

-xCORE-AVX512 -ipo -O3 -no-prec-div -qopt-prefetch
-qopt-mem-layout-trans=3

```

C++ benchmarks:

```

-xCORE-AVX512 -ipo -O3 -no-prec-div -qopt-prefetch
-qopt-mem-layout-trans=3 -Wl,-z,muldefs -L/sh10.2 -lsmartheap

```

Base Other Flags

C benchmarks:

```

403.gcc: -Dalloca=_alloca

```

Peak Compiler Invocation

C benchmarks (except as noted below):

```

icc -m32 -L/opt/intel/compilers_and_libraries_2017/linux/lib/ia32

```

```

400.perlbench: icc -m64

```

```

401.bzip2: icc -m64

```

```

456.hmmer: icc -m64

```

```

458.sjeng: icc -m64

```

C++ benchmarks:

```

icpc -m32 -L/opt/intel/compilers_and_libraries_2017/linux/lib/ia32

```



SPEC CINT2006 Result

Copyright 2006-2017 Standard Performance Evaluation Corporation

Lenovo Global Technology

SPECint_rate2006 = 4810

ThinkSystem SR950
(2.10 GHz, Intel Xeon Platinum 8170)

SPECint_rate_base2006 = 4610

CPU2006 license: 9017

Test date: Oct-2017

Test sponsor: Lenovo Global Technology

Hardware Availability: Sep-2017

Tested by: Lenovo Global Technology

Software Availability: Apr-2017

Peak Portability Flags

400.perlbench: -DSPEC_CPU_LP64 -DSPEC_CPU_LINUX_X64
 401.bzip2: -DSPEC_CPU_LP64
 403.gcc: -D_FILE_OFFSET_BITS=64
 429.mcf: -D_FILE_OFFSET_BITS=64
 445.gobmk: -D_FILE_OFFSET_BITS=64
 456.hmmer: -DSPEC_CPU_LP64
 458.sjeng: -DSPEC_CPU_LP64
 462.libquantum: -D_FILE_OFFSET_BITS=64 -DSPEC_CPU_LINUX
 464.h264ref: -D_FILE_OFFSET_BITS=64
 471.omnetpp: -D_FILE_OFFSET_BITS=64
 473.astar: -D_FILE_OFFSET_BITS=64
 483.xalanbmk: -D_FILE_OFFSET_BITS=64 -DSPEC_CPU_LINUX

Peak Optimization Flags

C benchmarks:

400.perlbench: -prof-gen(pass 1) -prof-use(pass 2) -xCORE-AVX512(pass 2)
 -par-num-threads=1(pass 1) -ipo(pass 2) -O3(pass 2)
 -no-prec-div(pass 2) -auto-ilp32 -qopt-mem-layout-trans=3

401.bzip2: -prof-gen(pass 1) -prof-use(pass 2) -xCORE-AVX512(pass 2)
 -par-num-threads=1(pass 1) -ipo(pass 2) -O3(pass 2)
 -no-prec-div(pass 2) -qopt-prefetch -auto-ilp32
 -qopt-mem-layout-trans=3

403.gcc: -xCORE-AVX512 -ipo -O3 -no-prec-div
 -qopt-mem-layout-trans=3

429.mcf: basepeak = yes

445.gobmk: -prof-gen(pass 1) -prof-use(pass 2) -xCORE-AVX512(pass 2)
 -par-num-threads=1(pass 1) -ipo(pass 2) -O3(pass 2)
 -no-prec-div(pass 2) -qopt-mem-layout-trans=3

456.hmmer: -xCORE-AVX512 -ipo -O3 -no-prec-div -unroll2 -auto-ilp32
 -qopt-mem-layout-trans=3

458.sjeng: -prof-gen(pass 1) -prof-use(pass 2) -xCORE-AVX512(pass 2)
 -par-num-threads=1(pass 1) -ipo(pass 2) -O3(pass 2)
 -no-prec-div(pass 2) -unroll4 -auto-ilp32
 -qopt-mem-layout-trans=3

462.libquantum: basepeak = yes

464.h264ref: -prof-gen(pass 1) -prof-use(pass 2) -xCORE-AVX512(pass 2)
 -par-num-threads=1(pass 1) -ipo(pass 2) -O3(pass 2)
 -no-prec-div(pass 2) -unroll2 -qopt-mem-layout-trans=3

Continued on next page



SPEC CINT2006 Result

Copyright 2006-2017 Standard Performance Evaluation Corporation

Lenovo Global Technology

ThinkSystem SR950
(2.10 GHz, Intel Xeon Platinum 8170)

SPECint_rate2006 = 4810

SPECint_rate_base2006 = 4610

CPU2006 license: 9017

Test sponsor: Lenovo Global Technology

Tested by: Lenovo Global Technology

Test date: Oct-2017

Hardware Availability: Sep-2017

Software Availability: Apr-2017

Peak Optimization Flags (Continued)

C++ benchmarks:

```
471.omnetpp: -prof-gen(pass 1) -prof-use(pass 2) -xCORE-AVX512(pass 2)
             -par-num-threads=1(pass 1) -ipo(pass 2) -O3(pass 2)
             -no-prec-div(pass 2)
             -qopt-ra-region-strategy=block
             -qopt-mem-layout-trans=3 -Wl,-z,muldefs
             -L/shl0.2 -lsmartheap
```

473.astar: basepeak = yes

483.xalancbmk: basepeak = yes

Peak Other Flags

C benchmarks:

```
403.gcc: -Dalloca=_alloca
```

The flags files that were used to format this result can be browsed at

<http://www.spec.org/cpu2006/flags/Intel-ic17.0-official-linux64-revF.html>
<http://www.spec.org/cpu2006/flags/Lenovo-Platform-Flags-V1.2-SKL-E.html>

You can also download the XML flags sources by saving the following links:

<http://www.spec.org/cpu2006/flags/Intel-ic17.0-official-linux64-revF.xml>
<http://www.spec.org/cpu2006/flags/Lenovo-Platform-Flags-V1.2-SKL-E.xml>

SPEC and SPECint are registered trademarks of the Standard Performance Evaluation Corporation. All other brand and product names appearing in this result are trademarks or registered trademarks of their respective holders.

For questions about this result, please contact the tester.
For other inquiries, please contact webmaster@spec.org.

Tested with SPEC CPU2006 v1.2.
Report generated on Mon Nov 27 11:22:07 2017 by SPEC CPU2006 PS/PDF formatter v6932.
Originally published on 22 November 2017.