



# SPEC® CINT2006 Result

Copyright 2006-2017 Standard Performance Evaluation Corporation

## Lenovo Global Technology

SPECint®\_rate2006 = 2580

ThinkSystem SR650  
(2.70 GHz, Intel Xeon Platinum 8168)

SPECint\_rate\_base2006 = 2470

CPU2006 license: 9017

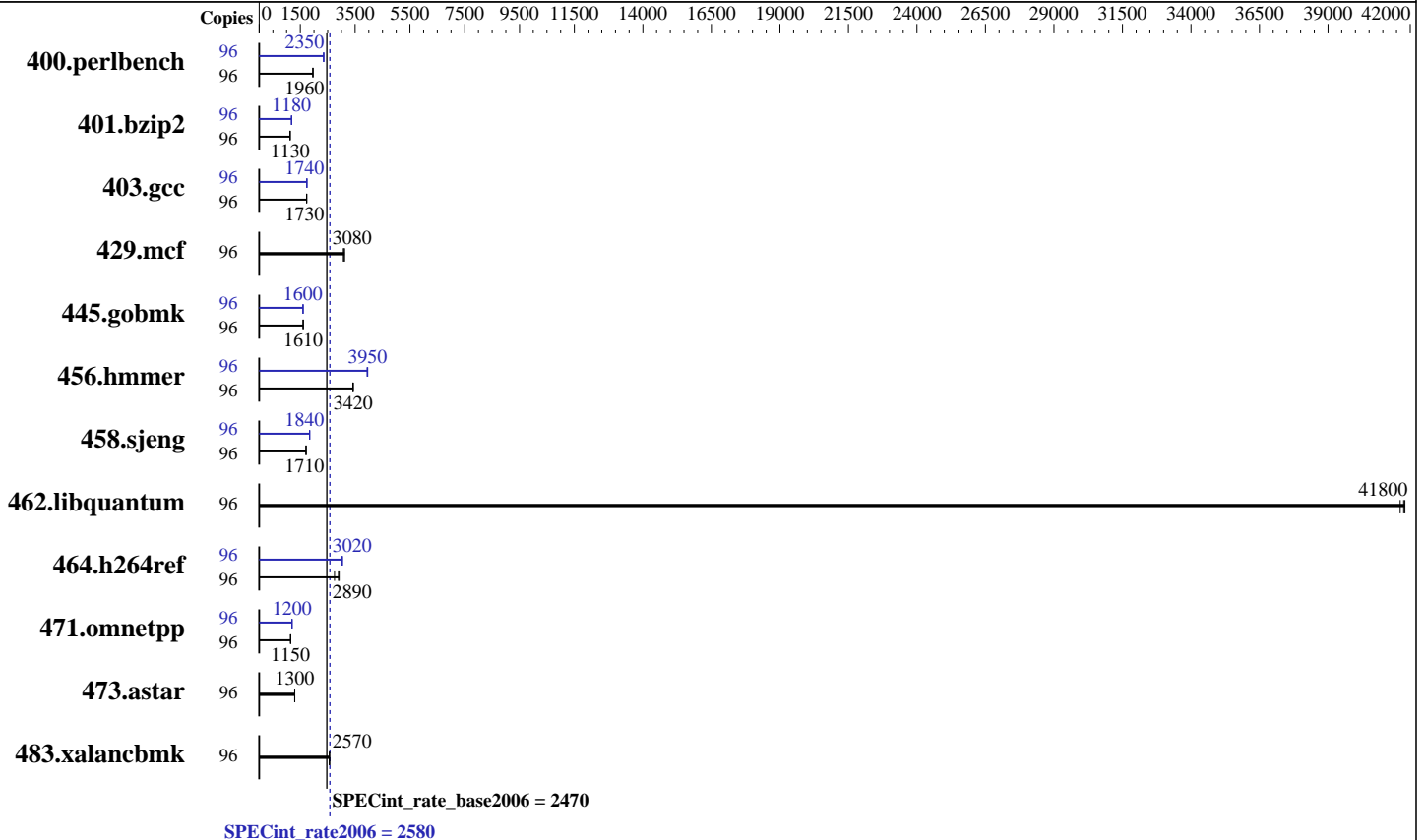
Test date: Jul-2017

Test sponsor: Lenovo Global Technology

Hardware Availability: Aug-2017

Tested by: Lenovo Global Technology

Software Availability: Apr-2017



### Hardware

CPU Name: Intel Xeon Platinum 8168  
 CPU Characteristics: Intel Turbo Boost Technology up to 3.70 GHz  
 CPU MHz: 2700  
 FPU: Integrated  
 CPU(s) enabled: 48 cores, 2 chips, 24 cores/chip, 2 threads/core  
 CPU(s) orderable: 1,2 chips  
 Primary Cache: 32 KB I + 32 KB D on chip per core  
 Secondary Cache: 1 MB I+D on chip per core  
 L3 Cache: 33 MB I+D on chip per chip  
 Other Cache: None  
 Memory: 384 GB (24 x 16 GB 2Rx8 PC4-2666V-R)  
 Disk Subsystem: 1 x 800 GB SAS SSD  
 Other Hardware: None

### Software

Operating System: SUSE Linux Enterprise Server 12 SP2 (x86\_64)  
 Kernel 4.4.21-69-default  
 Compiler: C/C++: Version 17.0.3.191 of Intel C/C++ Compiler for Linux  
 Auto Parallel: Yes  
 File System: xfs  
 System State: Run level 3 (multi-user)  
 Base Pointers: 32-bit  
 Peak Pointers: 32/64-bit  
 Other Software: Microquill SmartHeap V10.2



# SPEC CINT2006 Result

Copyright 2006-2017 Standard Performance Evaluation Corporation

## Lenovo Global Technology

SPECint\_rate2006 = 2580

ThinkSystem SR650  
(2.70 GHz, Intel Xeon Platinum 8168)

SPECint\_rate\_base2006 = 2470

CPU2006 license: 9017

Test date: Jul-2017

Test sponsor: Lenovo Global Technology

Hardware Availability: Aug-2017

Tested by: Lenovo Global Technology

Software Availability: Apr-2017

## Results Table

Benchmark	Base							Peak						
	Copies	Seconds	Ratio	Seconds	Ratio	Seconds	Ratio	Copies	Seconds	Ratio	Seconds	Ratio	Seconds	Ratio
400.perlbench	96	478	1960	479	1960	<b><u>478</u></b>	<b><u>1960</u></b>	96	399	2350	<b><u>399</u></b>	<b><u>2350</u></b>	398	2360
401.bzip2	96	825	1120	<b><u>821</u></b>	<b><u>1130</u></b>	819	1130	96	783	1180	<b><u>784</u></b>	<b><u>1180</u></b>	788	1180
403.gcc	96	<b><u>446</u></b>	<b><u>1730</u></b>	447	1730	445	1740	96	<b><u>444</u></b>	<b><u>1740</u></b>	445	1740	444	1740
429.mcf	96	284	3080	281	3120	<b><u>284</u></b>	<b><u>3080</u></b>	96	284	3080	281	3120	<b><u>284</u></b>	<b><u>3080</u></b>
445.gobmk	96	<b><u>627</u></b>	<b><u>1610</u></b>	627	1610	628	1600	96	630	1600	629	1600	<b><u>630</u></b>	<b><u>1600</u></b>
456.hammer	96	<b><u>262</u></b>	<b><u>3420</u></b>	261	3440	262	3420	96	226	3960	<b><u>227</u></b>	<b><u>3950</u></b>	228	3940
458.sjeng	96	679	1710	<b><u>679</u></b>	<b><u>1710</u></b>	679	1710	96	631	1840	<b><u>631</u></b>	<b><u>1840</u></b>	630	1840
462.libquantum	96	47.6	41800	<b><u>47.6</u></b>	<b><u>41800</u></b>	47.8	41600	96	47.6	41800	<b><u>47.6</u></b>	<b><u>41800</u></b>	47.8	41600
464.h264ref	96	728	2920	773	2750	<b><u>735</u></b>	<b><u>2890</u></b>	96	<b><u>702</u></b>	<b><u>3020</u></b>	704	3020	699	3040
471.omnetpp	96	524	1150	<b><u>523</u></b>	<b><u>1150</u></b>	523	1150	96	<b><u>501</u></b>	<b><u>1200</u></b>	501	1200	502	1200
473.astar	96	520	1300	519	1300	<b><u>520</u></b>	<b><u>1300</u></b>	96	520	1300	519	1300	<b><u>520</u></b>	<b><u>1300</u></b>
483.xalancbmk	96	257	2570	259	2560	<b><u>258</u></b>	<b><u>2570</u></b>	96	257	2570	259	2560	<b><u>258</u></b>	<b><u>2570</u></b>

Results appear in the order in which they were run. Bold underlined text indicates a median measurement.

## Submit Notes

The numactl mechanism was used to bind copies to processors. The config file option 'submit' was used to generate numactl commands to bind each copy to a specific processor. For details, please see the config file.

## Operating System Notes

Stack size set to unlimited using "ulimit -s unlimited"

## Platform Notes

BIOS configuration:  
Operating Mode set to Maximum Performance  
SNC set to Enable  
DCU Streamer Prefetcher set to Disable  
Stale AtoS set to Enable  
LLC dead line alloc set to Disable  
Sysinfo program /home/cpu2006-1.2-ic17.0u3/config/sysinfo.rev6993  
Revision 6993 of 2015-11-06 (b5e8d4b4eb51ed28d7f98696cbe290c1)  
running on Cyborg-SUT3 Sat Jul 8 00:08:47 2017

This section contains SUT (System Under Test) info as seen by some common utilities. To remove or add to this section, see:  
<http://www.spec.org/cpu2006/Docs/config.html#sysinfo>

From /proc/cpuinfo  
model name : Intel(R) Xeon(R) Platinum 8168 CPU @ 2.70GHz  
2 "physical id"s (chips)

Continued on next page



# SPEC CINT2006 Result

Copyright 2006-2017 Standard Performance Evaluation Corporation

## Lenovo Global Technology

SPECint\_rate2006 = 2580

ThinkSystem SR650  
(2.70 GHz, Intel Xeon Platinum 8168)

SPECint\_rate\_base2006 = 2470

CPU2006 license: 9017

Test date: Jul-2017

Test sponsor: Lenovo Global Technology

Hardware Availability: Aug-2017

Tested by: Lenovo Global Technology

Software Availability: Apr-2017

### Platform Notes (Continued)

96 "processors"  
cores, siblings (Caution: counting these is hw and system dependent. The following excerpts from /proc/cpuinfo might not be reliable. Use with caution.)

```
cpu cores : 24
siblings  : 48
physical 0: cores 0 1 2 3 4 5 8 9 10 11 12 13 16 17 18 19 20 21 24 25 26
27 28 29
physical 1: cores 0 1 2 3 4 5 8 9 10 11 12 13 16 17 18 19 20 21 24 25 26
27 28 29
```

cache size : 33792 KB

From /proc/meminfo

```
MemTotal:      395892192 kB
HugePages_Total: 0
Hugepagesize:  2048 kB
```

From /etc/\*release\* /etc/\*version\*

```
SuSE-release:
SUSE Linux Enterprise Server 12 (x86_64)
VERSION = 12
PATCHLEVEL = 2
# This file is deprecated and will be removed in a future service pack or
release.
# Please check /etc/os-release for details about this release.

os-release:
NAME="SLES"
VERSION="12-SP2"
VERSION_ID="12.2"
PRETTY_NAME="SUSE Linux Enterprise Server 12 SP2"
ID="sles"
ANSI_COLOR="0;32"
CPE_NAME="cpe:/o:suse:sles:12:sp2"
```

uname -a:

```
Linux Cyborg-SUT3 4.4.21-69-default #1 SMP Tue Oct 25 10:58:20 UTC 2016
(9464f67) x86_64 x86_64 x86_64 GNU/Linux
```

run-level 3 Jul 8 00:07

SPEC is set to: /home/cpu2006-1.2-ic17.0u3

```
Filesystem      Type  Size  Used Avail Use% Mounted on
/dev/sdb3        xfs   445G  9.8G  435G   3% /
```

Additional information from dmidecode:

Warning: Use caution when you interpret this section. The 'dmidecode' program reads system data which is "intended to allow hardware to be accurately determined", but the intent may not be met, as there are frequent changes to hardware, firmware, and the "DMTF SMBIOS" standard.

BIOS Lenovo -[IVE109Q-1.00]- 06/28/2017

Memory:

Continued on next page



# SPEC CINT2006 Result

Copyright 2006-2017 Standard Performance Evaluation Corporation

Lenovo Global Technology

SPECint\_rate2006 = 2580

ThinkSystem SR650  
(2.70 GHz, Intel Xeon Platinum 8168)

SPECint\_rate\_base2006 = 2470

CPU2006 license: 9017

Test date: Jul-2017

Test sponsor: Lenovo Global Technology

Hardware Availability: Aug-2017

Tested by: Lenovo Global Technology

Software Availability: Apr-2017

## Platform Notes (Continued)

24x Samsung M393A2K43BB1-CTD 16 GB 2 rank 2666 MHz

(End of data from sysinfo program)

## General Notes

Environment variables set by runspec before the start of the run:

LD\_LIBRARY\_PATH = "/home/cpu2006-1.2-ic17.0u3/lib/ia32:/home/cpu2006-1.2-ic17.0u3/lib/intel64:/home/cpu2006-1.2-ic17.0u3/sh10.2"

Binaries compiled on a system with 1x Intel Core i7-4790 CPU + 32GB RAM  
memory using Redhat Enterprise Linux 7.2

Transparent Huge Pages enabled by default

Filesystem page cache cleared with:

shell invocation of 'sync; echo 3 > /proc/sys/vm/drop\_caches' prior to run  
runspec command invoked through numactl i.e.:

numactl --interleave=all runspec <etc>

## Base Compiler Invocation

C benchmarks:

icc -m32 -L/opt/intel/compilers\_and\_libraries\_2017/linux/lib/ia32

C++ benchmarks:

icpc -m32 -L/opt/intel/compilers\_and\_libraries\_2017/linux/lib/ia32

## Base Portability Flags

400.perlbench: -D\_FILE\_OFFSET\_BITS=64 -DSPEC\_CPU\_LINUX\_IA32  
401.bzip2: -D\_FILE\_OFFSET\_BITS=64  
403.gcc: -D\_FILE\_OFFSET\_BITS=64  
429.mcf: -D\_FILE\_OFFSET\_BITS=64  
445.gobmk: -D\_FILE\_OFFSET\_BITS=64  
456.hmmer: -D\_FILE\_OFFSET\_BITS=64  
458.sjeng: -D\_FILE\_OFFSET\_BITS=64  
462.libquantum: -D\_FILE\_OFFSET\_BITS=64 -DSPEC\_CPU\_LINUX  
464.h264ref: -D\_FILE\_OFFSET\_BITS=64  
471.omnetpp: -D\_FILE\_OFFSET\_BITS=64  
473.astar: -D\_FILE\_OFFSET\_BITS=64  
483.xalancbmk: -D\_FILE\_OFFSET\_BITS=64 -DSPEC\_CPU\_LINUX

## Base Optimization Flags

C benchmarks:

-xCORE-AVX512 -ipo -O3 -no-prec-div -qopt-prefetch  
-qopt-mem-layout-trans=3

Continued on next page



# SPEC CINT2006 Result

Copyright 2006-2017 Standard Performance Evaluation Corporation

Lenovo Global Technology

SPECint\_rate2006 = 2580

ThinkSystem SR650  
(2.70 GHz, Intel Xeon Platinum 8168)

SPECint\_rate\_base2006 = 2470

CPU2006 license: 9017

Test date: Jul-2017

Test sponsor: Lenovo Global Technology

Hardware Availability: Aug-2017

Tested by: Lenovo Global Technology

Software Availability: Apr-2017

## Base Optimization Flags (Continued)

C++ benchmarks:

```
-xCORE-AVX512 -ipo -O3 -no-prec-div -qopt-prefetch
-qopt-mem-layout-trans=3 -Wl,-z,muldefs -L/sh10.2 -lsmartheap
```

## Base Other Flags

C benchmarks:

```
403.gcc: -Dalloca=_alloca
```

## Peak Compiler Invocation

C benchmarks (except as noted below):

```
icc -m32 -L/opt/intel/compilers_and_libraries_2017/linux/lib/ia32
```

```
400.perlbench: icc -m64
```

```
401.bzip2: icc -m64
```

```
456.hmmer: icc -m64
```

```
458.sjeng: icc -m64
```

C++ benchmarks:

```
icpc -m32 -L/opt/intel/compilers_and_libraries_2017/linux/lib/ia32
```

## Peak Portability Flags

```
400.perlbench: -DSPEC_CPU_LP64 -DSPEC_CPU_LINUX_X64
```

```
401.bzip2: -DSPEC_CPU_LP64
```

```
403.gcc: -D_FILE_OFFSET_BITS=64
```

```
429.mcf: -D_FILE_OFFSET_BITS=64
```

```
445.gobmk: -D_FILE_OFFSET_BITS=64
```

```
456.hmmer: -DSPEC_CPU_LP64
```

```
458.sjeng: -DSPEC_CPU_LP64
```

```
462.libquantum: -D_FILE_OFFSET_BITS=64 -DSPEC_CPU_LINUX
```

```
464.h264ref: -D_FILE_OFFSET_BITS=64
```

```
471.omnetpp: -D_FILE_OFFSET_BITS=64
```

```
473.astar: -D_FILE_OFFSET_BITS=64
```

```
483.xalancbmk: -D_FILE_OFFSET_BITS=64 -DSPEC_CPU_LINUX
```



# SPEC CINT2006 Result

Copyright 2006-2017 Standard Performance Evaluation Corporation

Lenovo Global Technology

SPECint\_rate2006 = 2580

ThinkSystem SR650  
(2.70 GHz, Intel Xeon Platinum 8168)

SPECint\_rate\_base2006 = 2470

CPU2006 license: 9017

Test date: Jul-2017

Test sponsor: Lenovo Global Technology

Hardware Availability: Aug-2017

Tested by: Lenovo Global Technology

Software Availability: Apr-2017

## Peak Optimization Flags

C benchmarks:

400.perlbench: -prof-gen(pass 1) -prof-use(pass 2) -xCORE-AVX512(pass 2)  
-par-num-threads=1(pass 1) -ipo(pass 2) -O3(pass 2)  
-no-prec-div(pass 2) -auto-ilp32 -qopt-mem-layout-trans=3

401.bzip2: -prof-gen(pass 1) -prof-use(pass 2) -xCORE-AVX512(pass 2)  
-par-num-threads=1(pass 1) -ipo(pass 2) -O3(pass 2)  
-no-prec-div(pass 2) -qopt-prefetch -auto-ilp32  
-qopt-mem-layout-trans=3

403.gcc: -xCORE-AVX512 -ipo -O3 -no-prec-div  
-qopt-mem-layout-trans=3

429.mcf: basepeak = yes

445.gobmk: -prof-gen(pass 1) -prof-use(pass 2) -xCORE-AVX512(pass 2)  
-par-num-threads=1(pass 1) -ipo(pass 2) -O3(pass 2)  
-no-prec-div(pass 2) -qopt-mem-layout-trans=3

456.hmmer: -xCORE-AVX512 -ipo -O3 -no-prec-div -unroll2 -auto-ilp32  
-qopt-mem-layout-trans=3

458.sjeng: -prof-gen(pass 1) -prof-use(pass 2) -xCORE-AVX512(pass 2)  
-par-num-threads=1(pass 1) -ipo(pass 2) -O3(pass 2)  
-no-prec-div(pass 2) -unroll4 -auto-ilp32  
-qopt-mem-layout-trans=3

462.libquantum: basepeak = yes

464.h264ref: -prof-gen(pass 1) -prof-use(pass 2) -xCORE-AVX512(pass 2)  
-par-num-threads=1(pass 1) -ipo(pass 2) -O3(pass 2)  
-no-prec-div(pass 2) -unroll2 -qopt-mem-layout-trans=3

C++ benchmarks:

471.omnetpp: -prof-gen(pass 1) -prof-use(pass 2) -xCORE-AVX512(pass 2)  
-par-num-threads=1(pass 1) -ipo(pass 2) -O3(pass 2)  
-no-prec-div(pass 2)  
-qopt-ra-region-strategy=block  
-qopt-mem-layout-trans=3 -Wl,-z,muldefs  
-L/sh10.2 -lsmartheap

473.astar: basepeak = yes

483.xalancbmk: basepeak = yes



# SPEC CINT2006 Result

Copyright 2006-2017 Standard Performance Evaluation Corporation

Lenovo Global Technology

SPECint\_rate2006 = 2580

ThinkSystem SR650  
(2.70 GHz, Intel Xeon Platinum 8168)

SPECint\_rate\_base2006 = 2470

CPU2006 license: 9017

Test date: Jul-2017

Test sponsor: Lenovo Global Technology

Hardware Availability: Aug-2017

Tested by: Lenovo Global Technology

Software Availability: Apr-2017

## Peak Other Flags

C benchmarks:

403.gcc: -Dalloca=\_alloca

The flags files that were used to format this result can be browsed at

<http://www.spec.org/cpu2006/flags/Intel-ic17.0-official-linux64-revF.html>

<http://www.spec.org/cpu2006/flags/Lenovo-Platform-Flags-V1.2-SKL-C.20171004.html>

You can also download the XML flags sources by saving the following links:

<http://www.spec.org/cpu2006/flags/Intel-ic17.0-official-linux64-revF.xml>

<http://www.spec.org/cpu2006/flags/Lenovo-Platform-Flags-V1.2-SKL-C.20171004.xml>

SPEC and SPECint are registered trademarks of the Standard Performance Evaluation Corporation. All other brand and product names appearing in this result are trademarks or registered trademarks of their respective holders.

For questions about this result, please contact the tester.  
For other inquiries, please contact [webmaster@spec.org](mailto:webmaster@spec.org).

Tested with SPEC CPU2006 v1.2.  
Report generated on Wed Oct 4 12:38:11 2017 by SPEC CPU2006 PS/PDF formatter v6932.  
Originally published on 3 October 2017.