



# SPEC® CINT2006 Result

Copyright 2006-2017 Standard Performance Evaluation Corporation

## Huawei

### SPECint®\_rate2006 = 3960

### Huawei 2488 V5 (Intel Xeon Gold 6148)

### SPECint\_rate\_base2006 = 3780

CPU2006 license: 3175

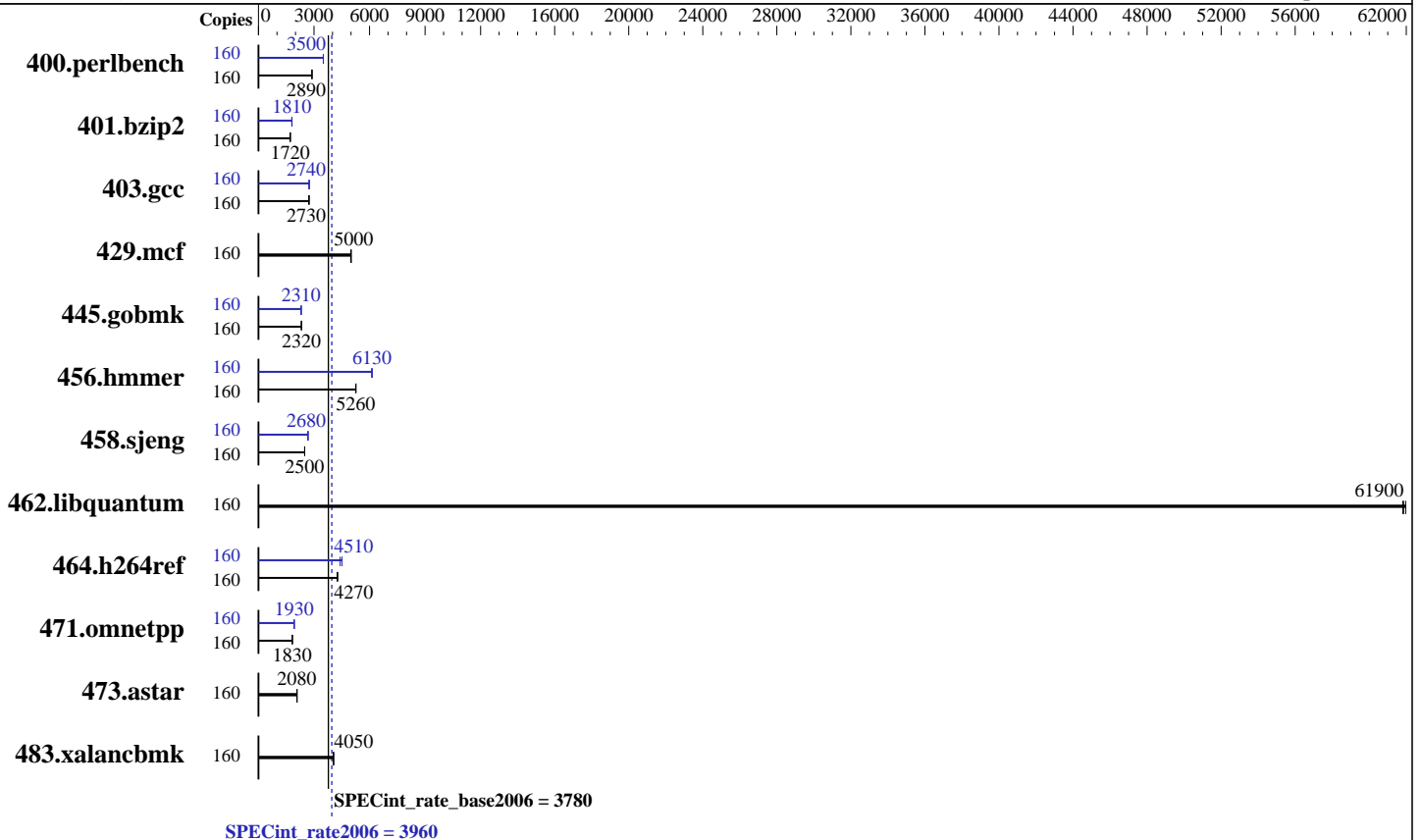
Test sponsor: Huawei

Tested by: Huawei

Test date: Aug-2017

Hardware Availability: Aug-2017

Software Availability: Apr-2017



### Hardware

CPU Name: Intel Xeon Gold 6148  
 CPU Characteristics: Intel Turbo Boost Technology up to 3.70 GHz  
 CPU MHz: 2400  
 FPU: Integrated  
 CPU(s) enabled: 80 cores, 4 chips, 20 cores/chip, 2 threads/core  
 CPU(s) orderable: 2,4 chip  
 Primary Cache: 32 KB I + 32 KB D on chip per core  
 Secondary Cache: 1 MB I+D on chip per core  
 L3 Cache: 27.5 MB I+D on chip per chip  
 Other Cache: None  
 Memory: 384 GB (24 x 16 GB 2Rx4 PC4-2666V-R)  
 Disk Subsystem: 2 x 300 GB SAS, 10K RPM  
 Other Hardware: None

### Software

Operating System: SUSE Linux Enterprise Server 12 SP2 4.4.21-69-default  
 Compiler: C/C++: Version 17.0.3.191 of Intel C/C++ Compiler for Linux;  
 Fortran: Version 17.0.3.191 of Intel Fortran Compiler for Linux  
 Auto Parallel: Yes  
 File System: xfs  
 System State: Run level 5 (multi user)  
 Base Pointers: 32/64-bit  
 Peak Pointers: 32/64-bit  
 Other Software: None



# SPEC CINT2006 Result

Copyright 2006-2017 Standard Performance Evaluation Corporation

## Huawei

SPECint\_rate2006 = 3960

## Huawei 2488 V5 (Intel Xeon Gold 6148)

SPECint\_rate\_base2006 = 3780

CPU2006 license: 3175  
Test sponsor: Huawei  
Tested by: Huawei

Test date: Aug-2017  
Hardware Availability: Aug-2017  
Software Availability: Apr-2017

### Results Table

Benchmark	Base							Peak						
	Copies	Seconds	Ratio	Seconds	Ratio	Seconds	Ratio	Copies	Seconds	Ratio	Seconds	Ratio	Seconds	Ratio
400.perlbench	160	541	2890	<u>541</u>	<u>2890</u>	541	2890	160	446	3510	<u>446</u>	<u>3500</u>	446	3500
401.bzip2	160	903	1710	897	1720	<u>897</u>	<u>1720</u>	160	<u>854</u>	<u>1810</u>	851	1810	858	1800
403.gcc	160	<u>473</u>	<u>2730</u>	470	2740	473	2720	160	469	2740	<u>470</u>	<u>2740</u>	472	2730
429.mcf	160	293	4980	<u>292</u>	<u>5000</u>	291	5010	160	293	4980	<u>292</u>	<u>5000</u>	291	5010
445.gobmk	160	723	2320	<u>723</u>	<u>2320</u>	723	2320	160	<u>728</u>	<u>2310</u>	728	2310	728	2300
456.hammer	160	<u>284</u>	<u>5260</u>	284	5260	284	5260	160	244	6120	<u>243</u>	<u>6130</u>	243	6140
458.sjeng	160	775	2500	777	2490	<u>776</u>	<u>2500</u>	160	725	2670	723	2680	<u>724</u>	<u>2680</u>
462.libquantum	160	53.5	62000	<u>53.6</u>	<u>61900</u>	53.6	61800	160	53.5	62000	<u>53.6</u>	<u>61900</u>	53.6	61800
464.h264ref	160	833	4250	<u>830</u>	<u>4270</u>	827	4280	160	803	4410	785	4510	<u>785</u>	<u>4510</u>
471.omnetpp	160	<u>547</u>	<u>1830</u>	546	1830	548	1830	160	518	1930	518	1930	<u>518</u>	<u>1930</u>
473.astar	160	540	2080	540	2080	<u>540</u>	<u>2080</u>	160	540	2080	540	2080	<u>540</u>	<u>2080</u>
483.xalancbmk	160	273	4050	272	4060	<u>272</u>	<u>4050</u>	160	273	4050	272	4060	<u>272</u>	<u>4050</u>

Results appear in the order in which they were run. Bold underlined text indicates a median measurement.

### Submit Notes

The numactl mechanism was used to bind copies to processors. The config file option 'submit' was used to generate numactl commands to bind each copy to a specific processor. For details, please see the config file.

### Operating System Notes

Stack size set to unlimited using "ulimit -s unlimited"  
Turbo mode set with:  
cpupower -c all frequency-set -g performance

### Platform Notes

BIOS configuration:  
Set SNC to enabled  
Set IMC interleaving to 1 way interleave  
Sysinfo program /home/cpu2006/config/sysinfo.rev6993  
Revision 6993 of 2015-11-06 (b5e8d4b4eb51ed28d7f98696cbe290c1)  
running on linux-k6p5 Mon Aug 28 10:47:16 2017

This section contains SUT (System Under Test) info as seen by some common utilities. To remove or add to this section, see:  
<http://www.spec.org/cpu2006/Docs/config.html#sysinfo>

From /proc/cpuinfo  
model name : Intel(R) Xeon(R) Gold 6148 CPU @ 2.40GHz  
4 "physical id"s (chips)  
160 "processors"

Continued on next page



# SPEC CINT2006 Result

Copyright 2006-2017 Standard Performance Evaluation Corporation

Huawei

SPECint\_rate2006 = 3960

Huawei 2488 V5 (Intel Xeon Gold 6148)

SPECint\_rate\_base2006 = 3780

CPU2006 license: 3175

Test sponsor: Huawei

Tested by: Huawei

Test date: Aug-2017

Hardware Availability: Aug-2017

Software Availability: Apr-2017

## Platform Notes (Continued)

cores, siblings (Caution: counting these is hw and system dependent. The following excerpts from /proc/cpuinfo might not be reliable. Use with caution.)

```

cpu cores : 20
siblings  : 40
physical 0: cores 0 1 2 3 4 8 9 10 11 12 16 17 18 19 20 24 25 26 27 28
physical 1: cores 0 1 2 3 4 8 9 10 11 12 16 17 18 19 20 24 25 26 27 28
physical 2: cores 0 1 2 3 4 8 9 10 11 12 16 17 18 19 20 24 25 26 27 28
physical 3: cores 0 1 2 3 4 8 9 10 11 12 16 17 18 19 20 24 25 26 27 28
cache size : 28160 KB

```

From /proc/meminfo

```

MemTotal:      394378984 kB
HugePages_Total: 0
Hugepagesize:  2048 kB

```

/usr/bin/lsc\_release -d

SUSE Linux Enterprise Server 12 SP2

From /etc/\*release\* /etc/\*version\*

```

SuSE-release:
SUSE Linux Enterprise Server 12 (x86_64)
VERSION = 12
PATCHLEVEL = 2
# This file is deprecated and will be removed in a future service pack or
release.
# Please check /etc/os-release for details about this release.
os-release:
NAME="SLES"
VERSION="12-SP2"
VERSION_ID="12.2"
PRETTY_NAME="SUSE Linux Enterprise Server 12 SP2"
ID="sles"
ANSI_COLOR="0;32"
CPE_NAME="cpe:/o:suse:sles:12:sp2"

```

uname -a:

```

Linux linux-k6p5 4.4.21-69-default #1 SMP Tue Oct 25 10:58:20 UTC 2016
(9464f67) x86_64 x86_64 x86_64 GNU/Linux

```

run-level 5 Aug 28 10:41

SPEC is set to: /home/cpu2006

```

Filesystem      Type  Size  Used Avail Use% Mounted on
/dev/sda4       xfs   516G  17G  499G   4% /home

```

Additional information from dmidecode:

Warning: Use caution when you interpret this section. The 'dmidecode' program reads system data which is "intended to allow hardware to be accurately determined", but the intent may not be met, as there are frequent changes to hardware, firmware, and the "DMTF SMBIOS" standard.

Continued on next page



# SPEC CINT2006 Result

Copyright 2006-2017 Standard Performance Evaluation Corporation

Huawei

SPECint\_rate2006 = 3960

Huawei 2488 V5 (Intel Xeon Gold 6148)

SPECint\_rate\_base2006 = 3780

CPU2006 license: 3175  
Test sponsor: Huawei  
Tested by: Huawei

Test date: Aug-2017  
Hardware Availability: Aug-2017  
Software Availability: Apr-2017

## Platform Notes (Continued)

BIOS INSYDE Corp. 0.38 07/28/2017

Memory:

8x NO DIMM NO DIMM

24x Samsung M393A2K43BB1-CTD 16 GB 2 rank 2666 MHz

(End of data from sysinfo program)

## General Notes

Environment variables set by runspec before the start of the run:

LD\_LIBRARY\_PATH = "/home/cpu2006/lib/ia32:/home/cpu2006/lib/intel64:/home/cpu2006/sh10.2"

Binaries compiled on a system with 1x Intel Core i7-4790 CPU + 32GB RAM  
memory using Redhat Enterprise Linux 7.2

Transparent Huge Pages enabled by default

Filesystem page cache cleared with:

shell invocation of 'sync; echo 3 > /proc/sys/vm/drop\_caches' prior to run

runspec command invoked through numactl i.e.:

numactl --interleave=all runspec <etc>

## Base Compiler Invocation

C benchmarks:

icc -m32 -L/opt/intel/compilers\_and\_libraries\_2017/linux/lib/ia32

C++ benchmarks:

icpc -m32 -L/opt/intel/compilers\_and\_libraries\_2017/linux/lib/ia32

## Base Portability Flags

400.perlbench: -D\_FILE\_OFFSET\_BITS=64 -DSPEC\_CPU\_LINUX\_IA32

401.bzip2: -D\_FILE\_OFFSET\_BITS=64

403.gcc: -D\_FILE\_OFFSET\_BITS=64

429.mcf: -D\_FILE\_OFFSET\_BITS=64

445.gobmk: -D\_FILE\_OFFSET\_BITS=64

456.hmmer: -D\_FILE\_OFFSET\_BITS=64

458.sjeng: -D\_FILE\_OFFSET\_BITS=64

462.libquantum: -D\_FILE\_OFFSET\_BITS=64 -DSPEC\_CPU\_LINUX

464.h264ref: -D\_FILE\_OFFSET\_BITS=64

471.omnetpp: -D\_FILE\_OFFSET\_BITS=64

473.astar: -D\_FILE\_OFFSET\_BITS=64

483.xalancbmk: -D\_FILE\_OFFSET\_BITS=64 -DSPEC\_CPU\_LINUX



# SPEC CINT2006 Result

Copyright 2006-2017 Standard Performance Evaluation Corporation

Huawei

SPECint\_rate2006 = 3960

Huawei 2488 V5 (Intel Xeon Gold 6148)

SPECint\_rate\_base2006 = 3780

CPU2006 license: 3175  
Test sponsor: Huawei  
Tested by: Huawei

Test date: Aug-2017  
Hardware Availability: Aug-2017  
Software Availability: Apr-2017

## Base Optimization Flags

C benchmarks:

-xCORE-AVX512 -ipo -O3 -no-prec-div -qopt-prefetch  
-qopt-mem-layout-trans=3

C++ benchmarks:

-xCORE-AVX512 -ipo -O3 -no-prec-div -qopt-prefetch  
-qopt-mem-layout-trans=3 -Wl,-z,muldefs -L/sh10.2 -lsmartheap

## Base Other Flags

C benchmarks:

403.gcc: -Dalloca=\_alloca

## Peak Compiler Invocation

C benchmarks (except as noted below):

icc -m32 -L/opt/intel/compilers\_and\_libraries\_2017/linux/lib/ia32

400.perlbench: icc -m64

401.bzip2: icc -m64

456.hmmer: icc -m64

458.sjeng: icc -m64

C++ benchmarks:

icpc -m32 -L/opt/intel/compilers\_and\_libraries\_2017/linux/lib/ia32

## Peak Portability Flags

400.perlbench: -DSPEC\_CPU\_LP64 -DSPEC\_CPU\_LINUX\_X64

401.bzip2: -DSPEC\_CPU\_LP64

403.gcc: -D\_FILE\_OFFSET\_BITS=64

429.mcf: -D\_FILE\_OFFSET\_BITS=64

445.gobmk: -D\_FILE\_OFFSET\_BITS=64

456.hmmer: -DSPEC\_CPU\_LP64

458.sjeng: -DSPEC\_CPU\_LP64

462.libquantum: -D\_FILE\_OFFSET\_BITS=64 -DSPEC\_CPU\_LINUX

464.h264ref: -D\_FILE\_OFFSET\_BITS=64

471.omnetpp: -D\_FILE\_OFFSET\_BITS=64

473.astar: -D\_FILE\_OFFSET\_BITS=64

Continued on next page



# SPEC CINT2006 Result

Copyright 2006-2017 Standard Performance Evaluation Corporation

Huawei

SPECint\_rate2006 = 3960

Huawei 2488 V5 (Intel Xeon Gold 6148)

SPECint\_rate\_base2006 = 3780

CPU2006 license: 3175  
Test sponsor: Huawei  
Tested by: Huawei

Test date: Aug-2017  
Hardware Availability: Aug-2017  
Software Availability: Apr-2017

## Peak Portability Flags (Continued)

483.xalancbmk: -D\_FILE\_OFFSET\_BITS=64 -DSPEC\_CPU\_LINUX

## Peak Optimization Flags

C benchmarks:

400.perlbench: -prof-gen(pass 1) -prof-use(pass 2) -xCORE-AVX512(pass 2)  
-par-num-threads=1(pass 1) -ipo(pass 2) -O3(pass 2)  
-no-prec-div(pass 2) -auto-ilp32 -qopt-mem-layout-trans=3

401.bzip2: -prof-gen(pass 1) -prof-use(pass 2) -xCORE-AVX512(pass 2)  
-par-num-threads=1(pass 1) -ipo(pass 2) -O3(pass 2)  
-no-prec-div(pass 2) -qopt-prefetch -auto-ilp32  
-qopt-mem-layout-trans=3

403.gcc: -xCORE-AVX512 -ipo -O3 -no-prec-div  
-qopt-mem-layout-trans=3

429.mcf: basepeak = yes

445.gobmk: -prof-gen(pass 1) -prof-use(pass 2) -xCORE-AVX512(pass 2)  
-par-num-threads=1(pass 1) -ipo(pass 2) -O3(pass 2)  
-no-prec-div(pass 2) -qopt-mem-layout-trans=3

456.hmmmer: -xCORE-AVX512 -ipo -O3 -no-prec-div -unroll2 -auto-ilp32  
-qopt-mem-layout-trans=3

458.sjeng: -prof-gen(pass 1) -prof-use(pass 2) -xCORE-AVX512(pass 2)  
-par-num-threads=1(pass 1) -ipo(pass 2) -O3(pass 2)  
-no-prec-div(pass 2) -unroll4 -auto-ilp32  
-qopt-mem-layout-trans=3

462.libquantum: basepeak = yes

464.h264ref: -prof-gen(pass 1) -prof-use(pass 2) -xCORE-AVX512(pass 2)  
-par-num-threads=1(pass 1) -ipo(pass 2) -O3(pass 2)  
-no-prec-div(pass 2) -unroll2 -qopt-mem-layout-trans=3

C++ benchmarks:

471.omnetpp: -prof-gen(pass 1) -prof-use(pass 2) -xCORE-AVX512(pass 2)  
-par-num-threads=1(pass 1) -ipo(pass 2) -O3(pass 2)  
-no-prec-div(pass 2)  
-qopt-ra-region-strategy=block  
-qopt-mem-layout-trans=3 -Wl,-z,muldefs  
-L/sh10.2 -lsmartheap

Continued on next page



# SPEC CINT2006 Result

Copyright 2006-2017 Standard Performance Evaluation Corporation

Huawei

SPECint\_rate2006 = 3960

Huawei 2488 V5 (Intel Xeon Gold 6148)

SPECint\_rate\_base2006 = 3780

CPU2006 license: 3175

Test sponsor: Huawei

Tested by: Huawei

Test date: Aug-2017

Hardware Availability: Aug-2017

Software Availability: Apr-2017

## Peak Optimization Flags (Continued)

473.astar: basepeak = yes

483.xalancbmk: basepeak = yes

## Peak Other Flags

C benchmarks:

403.gcc: -Dalloca=\_alloca

The flags files that were used to format this result can be browsed at

<http://www.spec.org/cpu2006/flags/Intel-ic17.0-official-linux64-revF.html>

<http://www.spec.org/cpu2006/flags/Huawei-Platform-Settings-SKL-V1.6.html>

You can also download the XML flags sources by saving the following links:

<http://www.spec.org/cpu2006/flags/Intel-ic17.0-official-linux64-revF.xml>

<http://www.spec.org/cpu2006/flags/Huawei-Platform-Settings-SKL-V1.6.xml>

SPEC and SPECint are registered trademarks of the Standard Performance Evaluation Corporation. All other brand and product names appearing in this result are trademarks or registered trademarks of their respective holders.

For questions about this result, please contact the tester.  
For other inquiries, please contact [webmaster@spec.org](mailto:webmaster@spec.org).

Tested with SPEC CPU2006 v1.2.

Report generated on Wed Sep 20 11:01:58 2017 by SPEC CPU2006 PS/PDF formatter v6932.

Originally published on 19 September 2017.