



# SPEC® CINT2006 Result

Copyright 2006-2017 Standard Performance Evaluation Corporation

## Huawei

SPECint®\_rate2006 = 2610

Huawei 1288H V5 (Intel Xeon Platinum 8168)

SPECint\_rate\_base2006 = 2490

CPU2006 license: 3175

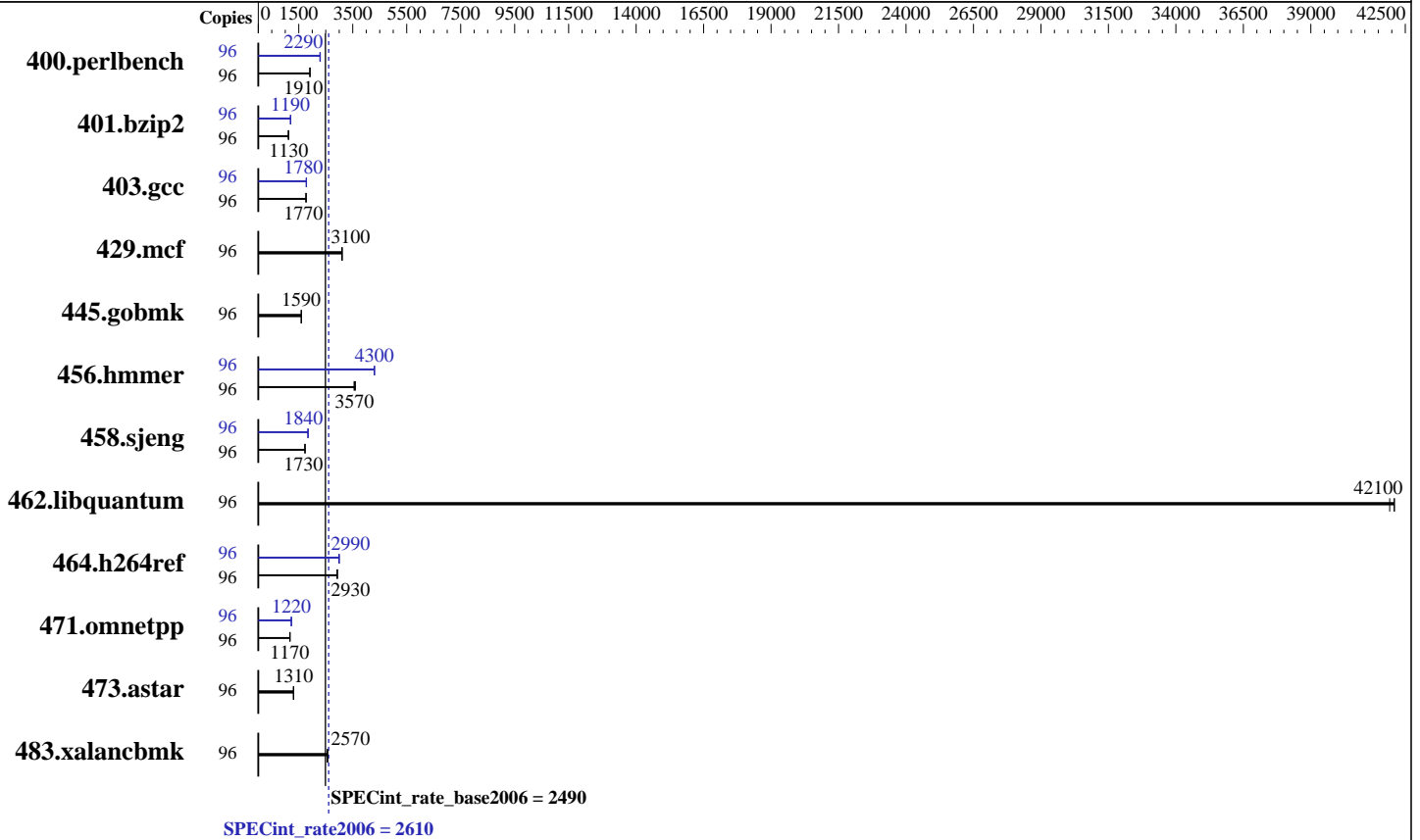
Test sponsor: Huawei

Tested by: Huawei

Test date: Jun-2017

Hardware Availability: Aug-2017

Software Availability: Nov-2016



### Hardware

CPU Name: Intel Xeon Platinum 8168  
 CPU Characteristics: Intel Turbo Boost Technology up to 3.70 GHz  
 CPU MHz: 2700  
 FPU: Integrated  
 CPU(s) enabled: 48 cores, 2 chips, 24 cores/chip, 2 threads/core  
 CPU(s) orderable: 1,2 chip  
 Primary Cache: 32 KB I + 32 KB D on chip per core  
 Secondary Cache: 1 MB I+D on chip per core  
 L3 Cache: 33 MB I+D on chip per chip  
 Other Cache: None  
 Memory: 384 GB (24 x 16 GB 2Rx8 PC4-2666V-R)  
 Disk Subsystem: 1 x 1200 GB SAS, 10000 RPM  
 Other Hardware: None

### Software

Operating System: Red Hat Enterprise Linux Server release 7.3 (Maipo)  
 3.10.0-514.el7.x86\_64  
 Compiler: C/C++: Version 17.0.1.132 of Intel C/C++ Compiler for Linux  
 Auto Parallel: No  
 File System: xfs  
 System State: Run level 3 (multi-user)  
 Base Pointers: 32-bit  
 Peak Pointers: 32/64-bit  
 Other Software: Microquill SmartHeap V10.2



# SPEC CINT2006 Result

Copyright 2006-2017 Standard Performance Evaluation Corporation

## Huawei

SPECint\_rate2006 = 2610

Huawei 1288H V5 (Intel Xeon Platinum 8168)

SPECint\_rate\_base2006 = 2490

CPU2006 license: 3175

Test sponsor: Huawei

Tested by: Huawei

Test date: Jun-2017

Hardware Availability: Aug-2017

Software Availability: Nov-2016

## Results Table

Benchmark	Base							Peak						
	Copies	Seconds	Ratio	Seconds	Ratio	Seconds	Ratio	Copies	Seconds	Ratio	Seconds	Ratio	Seconds	Ratio
400.perlbench	96	490	1920	<b>490</b>	<b>1910</b>	490	1910	96	<b>409</b>	<b>2290</b>	408	2300	411	2280
401.bzip2	96	819	1130	838	1110	<b>823</b>	<b>1130</b>	96	769	1200	779	1190	<b>775</b>	<b>1190</b>
403.gcc	96	435	1780	438	1760	<b>437</b>	<b>1770</b>	96	<b>433</b>	<b>1780</b>	433	1790	436	1770
429.mcf	96	282	3110	<b>282</b>	<b>3100</b>	282	3100	96	282	3110	<b>282</b>	<b>3100</b>	282	3100
445.gobmk	96	632	1590	<b>632</b>	<b>1590</b>	631	1600	96	632	1590	<b>632</b>	<b>1590</b>	631	1600
456.hammer	96	<b>251</b>	<b>3570</b>	249	3600	252	3550	96	208	4310	208	4300	<b>208</b>	<b>4300</b>
458.sjeng	96	669	1740	<b>672</b>	<b>1730</b>	673	1730	96	631	1840	630	1840	<b>630</b>	<b>1840</b>
462.libquantum	96	<b>47.3</b>	<b>42100</b>	47.4	41900	47.3	42100	96	<b>47.3</b>	<b>42100</b>	47.4	41900	47.3	42100
464.h264ref	96	726	2930	726	2930	<b>726</b>	<b>2930</b>	96	711	2990	707	3010	<b>711</b>	<b>2990</b>
471.omnetpp	96	511	1170	<b>511</b>	<b>1170</b>	512	1170	96	<b>490</b>	<b>1220</b>	489	1230	490	1220
473.astar	96	515	1310	<b>516</b>	<b>1310</b>	517	1300	96	515	1310	<b>516</b>	<b>1310</b>	517	1300
483.xalancbmk	96	258	2570	<b>258</b>	<b>2570</b>	259	2560	96	258	2570	<b>258</b>	<b>2570</b>	259	2560

Results appear in the order in which they were run. Bold underlined text indicates a median measurement.

## Submit Notes

The numactl mechanism was used to bind copies to processors. The config file option 'submit' was used to generate numactl commands to bind each copy to a specific processor. For details, please see the config file.

## Operating System Notes

Stack size set to unlimited using "ulimit -s unlimited"

## Platform Notes

BIOS configuration:  
Set Power Efficiency Mode to Performance  
Set SNC to Enable  
Set IMC Interleaving to 1 way  
Set Patrol Scrub to Disable  
Sysinfo program /spec17/config/sysinfo.rev6993  
Revision 6993 of 2015-11-06 (b5e8d4b4eb51ed28d7f98696cbe290c1)  
running on localhost.localdomain Wed Jun 21 00:50:32 2017

This section contains SUT (System Under Test) info as seen by some common utilities. To remove or add to this section, see:  
<http://www.spec.org/cpu2006/Docs/config.html#sysinfo>

From /proc/cpuinfo  
model name : Intel(R) Xeon(R) Platinum 8168 CPU @ 2.70GHz  
2 "physical id"s (chips)  
96 "processors"

Continued on next page



# SPEC CINT2006 Result

Copyright 2006-2017 Standard Performance Evaluation Corporation

Huawei

SPECint\_rate2006 = 2610

Huawei 1288H V5 (Intel Xeon Platinum 8168)

SPECint\_rate\_base2006 = 2490

CPU2006 license: 3175

Test sponsor: Huawei

Tested by: Huawei

Test date: Jun-2017

Hardware Availability: Aug-2017

Software Availability: Nov-2016

## Platform Notes (Continued)

cores, siblings (Caution: counting these is hw and system dependent. The following excerpts from /proc/cpuinfo might not be reliable. Use with caution.)

```
cpu cores : 24
siblings  : 48
physical 0: cores 0 1 2 3 4 5 8 9 10 11 12 13 16 17 18 19 20 21 24 25 26
27 28 29
physical 1: cores 0 1 2 3 4 5 8 9 10 11 12 13 16 17 18 19 20 21 24 25 26
27 28 29
cache size : 33792 KB
```

From /proc/meminfo

```
MemTotal:      394144692 kB
HugePages_Total: 0
Hugepagesize:  2048 kB
```

From /etc/\*release\* /etc/\*version\*

```
os-release:
NAME="Red Hat Enterprise Linux Server"
VERSION="7.3 (Maipo)"
ID="rhel"
ID_LIKE="fedora"
VERSION_ID="7.3"
PRETTY_NAME="Red Hat Enterprise Linux Server 7.3 (Maipo)"
ANSI_COLOR="0;31"
CPE_NAME="cpe:/o:redhat:enterprise_linux:7.3:GA:server"
redhat-release: Red Hat Enterprise Linux Server release 7.3 (Maipo)
system-release: Red Hat Enterprise Linux Server release 7.3 (Maipo)
system-release-cpe: cpe:/o:redhat:enterprise_linux:7.3:ga:server
```

uname -a:

```
Linux localhost.localdomain 3.10.0-514.el7.x86_64 #1 SMP Wed Oct 19 11:24:13
EDT 2016 x86_64 x86_64 x86_64 GNU/Linux
```

run-level 3 Jun 20 14:48

SPEC is set to: /spec17

```
Filesystem      Type  Size  Used Avail Use% Mounted on
/dev/sda2        xfs   262G  85G  177G  33% /
```

Additional information from dmidecode:

Warning: Use caution when you interpret this section. The 'dmidecode' program reads system data which is "intended to allow hardware to be accurately determined", but the intent may not be met, as there are frequent changes to hardware, firmware, and the "DMTF SMBIOS" standard.

BIOS INSYDE Corp. 0.10 02/14/2017

Memory:

24x Samsung M393A2K43BB1-CTD 16 GB 2 rank 2666 MHz

(End of data from sysinfo program)



# SPEC CINT2006 Result

Copyright 2006-2017 Standard Performance Evaluation Corporation

Huawei

SPECint\_rate2006 = 2610

Huawei 1288H V5 (Intel Xeon Platinum 8168)

SPECint\_rate\_base2006 = 2490

CPU2006 license: 3175

Test sponsor: Huawei

Tested by: Huawei

Test date: Jun-2017

Hardware Availability: Aug-2017

Software Availability: Nov-2016

## General Notes

Environment variables set by runspec before the start of the run:  
LD\_LIBRARY\_PATH = "/spec17/lib/ia32:/spec17/lib/intel64:/spec17/sh10.2"

Binaries compiled on a system with 1x Intel Core i7-4790 CPU + 32GB RAM memory using Redhat Enterprise Linux 7.2  
Transparent Huge Pages enabled with:  
echo always > /sys/kernel/mm/transparent\_hugepage/enabled  
Filesystem page cache cleared with:  
echo 1> /proc/sys/vm/drop\_caches  
runspec command invoked through numactl i.e.:  
numactl --interleave=all runspec <etc>

## Base Compiler Invocation

C benchmarks:

icc -m32 -L/opt/intel/compilers\_and\_libraries\_2017/linux/lib/ia32

C++ benchmarks:

icpc -m32 -L/opt/intel/compilers\_and\_libraries\_2017/linux/lib/ia32

## Base Portability Flags

400.perlbench: -D\_FILE\_OFFSET\_BITS=64 -DSPEC\_CPU\_LINUX\_IA32  
401.bzip2: -D\_FILE\_OFFSET\_BITS=64  
403.gcc: -D\_FILE\_OFFSET\_BITS=64  
429.mcf: -D\_FILE\_OFFSET\_BITS=64  
445.gobmk: -D\_FILE\_OFFSET\_BITS=64  
456.hmmer: -D\_FILE\_OFFSET\_BITS=64  
458.sjeng: -D\_FILE\_OFFSET\_BITS=64  
462.libquantum: -D\_FILE\_OFFSET\_BITS=64 -DSPEC\_CPU\_LINUX  
464.h264ref: -D\_FILE\_OFFSET\_BITS=64  
471.omnetpp: -D\_FILE\_OFFSET\_BITS=64  
473.astar: -D\_FILE\_OFFSET\_BITS=64  
483.xalancbmk: -D\_FILE\_OFFSET\_BITS=64 -DSPEC\_CPU\_LINUX

## Base Optimization Flags

C benchmarks:

-xCORE-AVX512 -ipo -O3 -no-prec-div -qopt-prefetch  
-qopt-mem-layout-trans=3

C++ benchmarks:

-xCORE-AVX512 -ipo -O3 -no-prec-div -qopt-prefetch  
-qopt-mem-layout-trans=3 -Wl,-z,muldefs -L/sh10.2 -lsmartheap



# SPEC CINT2006 Result

Copyright 2006-2017 Standard Performance Evaluation Corporation

Huawei

SPECint\_rate2006 = 2610

Huawei 1288H V5 (Intel Xeon Platinum 8168)

SPECint\_rate\_base2006 = 2490

CPU2006 license: 3175  
Test sponsor: Huawei  
Tested by: Huawei

Test date: Jun-2017  
Hardware Availability: Aug-2017  
Software Availability: Nov-2016

## Base Other Flags

C benchmarks:

403.gcc: -Dalloca=\_alloca

## Peak Compiler Invocation

C benchmarks (except as noted below):

icc -m32 -L/opt/intel/compilers\_and\_libraries\_2017/linux/lib/ia32

400.perlbench: icc -m64

401.bzip2: icc -m64

456.hmmer: icc -m64

458.sjeng: icc -m64

C++ benchmarks:

icpc -m32 -L/opt/intel/compilers\_and\_libraries\_2017/linux/lib/ia32

## Peak Portability Flags

400.perlbench: -DSPEC\_CPU\_LP64 -DSPEC\_CPU\_LINUX\_X64

401.bzip2: -DSPEC\_CPU\_LP64

403.gcc: -D\_FILE\_OFFSET\_BITS=64

429.mcf: -D\_FILE\_OFFSET\_BITS=64

445.gobmk: -D\_FILE\_OFFSET\_BITS=64

456.hmmer: -DSPEC\_CPU\_LP64

458.sjeng: -DSPEC\_CPU\_LP64

462.libquantum: -D\_FILE\_OFFSET\_BITS=64 -DSPEC\_CPU\_LINUX

464.h264ref: -D\_FILE\_OFFSET\_BITS=64

471.omnetpp: -D\_FILE\_OFFSET\_BITS=64

473.astar: -D\_FILE\_OFFSET\_BITS=64

483.xalancbmk: -D\_FILE\_OFFSET\_BITS=64 -DSPEC\_CPU\_LINUX

## Peak Optimization Flags

C benchmarks:

400.perlbench: -prof-gen(pass 1) -prof-use(pass 2) -xCORE-AVX512(pass 2)

-par-num-threads=1(pass 1) -ipo(pass 2) -O3(pass 2)

-no-prec-div(pass 2) -auto-ilp32 -qopt-mem-layout-trans=3

Continued on next page



# SPEC CINT2006 Result

Copyright 2006-2017 Standard Performance Evaluation Corporation

Huawei

SPECint\_rate2006 = 2610

Huawei 1288H V5 (Intel Xeon Platinum 8168)

SPECint\_rate\_base2006 = 2490

CPU2006 license: 3175

Test date: Jun-2017

Test sponsor: Huawei

Hardware Availability: Aug-2017

Tested by: Huawei

Software Availability: Nov-2016

## Peak Optimization Flags (Continued)

401.bzip2: -prof-gen(pass 1) -prof-use(pass 2) -xCORE-AVX512(pass 2)  
-par-num-threads=1(pass 1) -ipo(pass 2) -O3(pass 2)  
-no-prec-div(pass 2) -qopt-prefetch -auto-ilp32  
-qopt-mem-layout-trans=3

403.gcc: -xCORE-AVX512 -ipo -O3 -no-prec-div  
-qopt-mem-layout-trans=3

429.mcf: basepeak = yes

445.gobmk: basepeak = yes

456.hmmer: -xCORE-AVX512 -ipo -O3 -no-prec-div -unroll2 -auto-ilp32  
-qopt-mem-layout-trans=3

458.sjeng: -prof-gen(pass 1) -prof-use(pass 2) -xCORE-AVX512(pass 2)  
-par-num-threads=1(pass 1) -ipo(pass 2) -O3(pass 2)  
-no-prec-div(pass 2) -unroll4 -auto-ilp32  
-qopt-mem-layout-trans=3

462.libquantum: basepeak = yes

464.h264ref: -prof-gen(pass 1) -prof-use(pass 2) -xCORE-AVX512(pass 2)  
-par-num-threads=1(pass 1) -ipo(pass 2) -O3(pass 2)  
-no-prec-div(pass 2) -unroll2 -qopt-mem-layout-trans=3

C++ benchmarks:

471.omnetpp: -prof-gen(pass 1) -prof-use(pass 2) -xCORE-AVX512(pass 2)  
-par-num-threads=1(pass 1) -ipo(pass 2) -O3(pass 2)  
-no-prec-div(pass 2)  
-qopt-ra-region-strategy=block  
-qopt-mem-layout-trans=3 -Wl,-z,muldefs  
-L/sh10.2 -lsmartheap

473.astar: basepeak = yes

483.xalancbmk: basepeak = yes

## Peak Other Flags

C benchmarks:

403.gcc: -Dalloca=\_alloca



# SPEC CINT2006 Result

Copyright 2006-2017 Standard Performance Evaluation Corporation

Huawei

SPECint\_rate2006 = 2610

Huawei 1288H V5 (Intel Xeon Platinum 8168)

SPECint\_rate\_base2006 = 2490

CPU2006 license: 3175

Test sponsor: Huawei

Tested by: Huawei

Test date: Jun-2017

Hardware Availability: Aug-2017

Software Availability: Nov-2016

The flags files that were used to format this result can be browsed at

<http://www.spec.org/cpu2006/flags/Intel-ic17.0-official-linux64.html>

<http://www.spec.org/cpu2006/flags/Huawei-Platform-Settings-SKL-V1.6.html>

You can also download the XML flags sources by saving the following links:

<http://www.spec.org/cpu2006/flags/Intel-ic17.0-official-linux64.xml>

<http://www.spec.org/cpu2006/flags/Huawei-Platform-Settings-SKL-V1.6.xml>

SPEC and SPECint are registered trademarks of the Standard Performance Evaluation Corporation. All other brand and product names appearing in this result are trademarks or registered trademarks of their respective holders.

For questions about this result, please contact the tester.  
For other inquiries, please contact [webmaster@spec.org](mailto:webmaster@spec.org).

Tested with SPEC CPU2006 v1.2.  
Report generated on Tue Jul 25 15:51:20 2017 by SPEC CPU2006 PS/PDF formatter v6932.  
Originally published on 25 July 2017.