



SPEC® CINT2006 Result

Copyright 2006-2017 Standard Performance Evaluation Corporation

Dell Inc.

PowerEdge R940 (Intel Xeon Platinum 8168, 2.70 GHz)

SPECint®_rate2006 = 4980

SPECint_rate_base2006 = 4770

CPU2006 license: 55

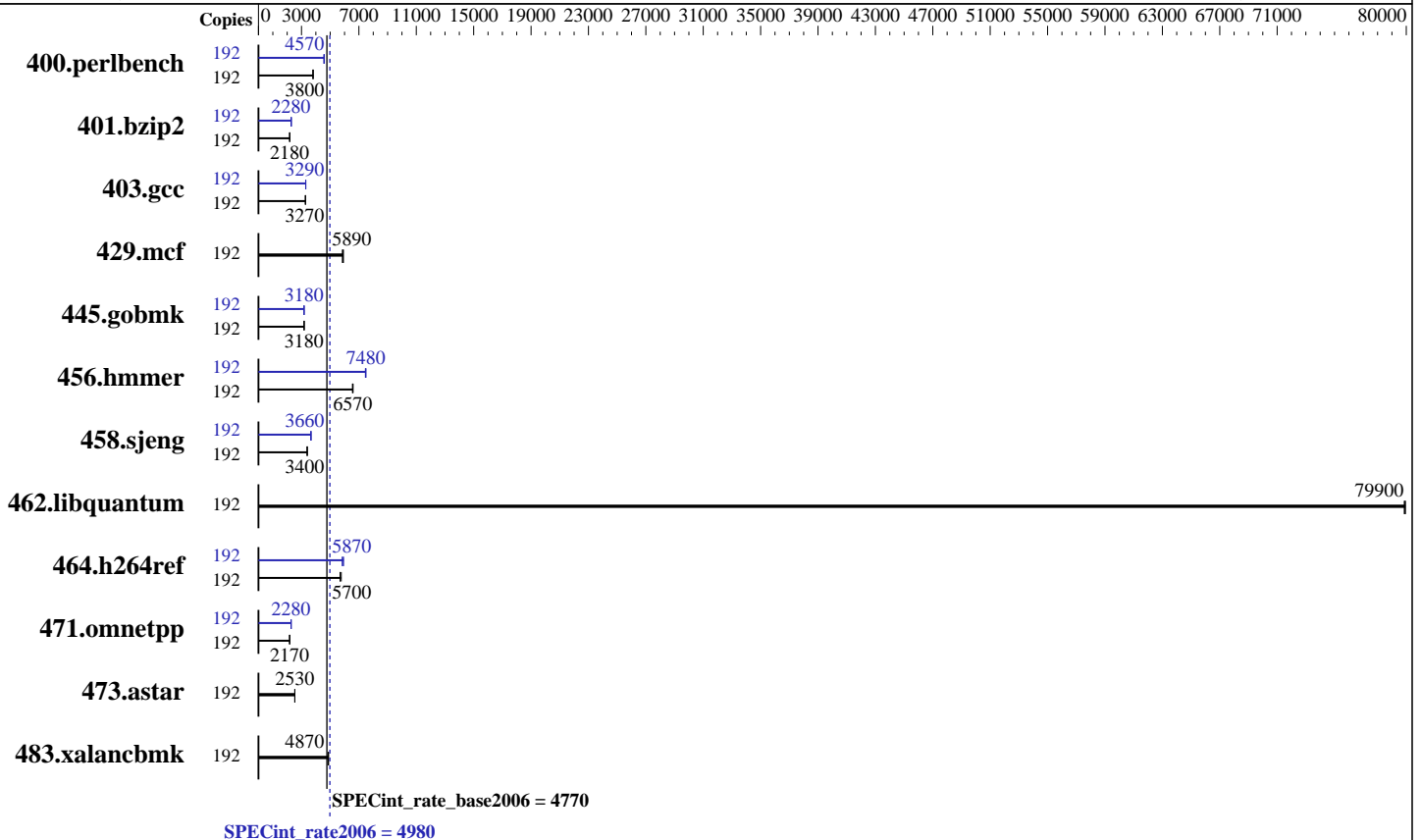
Test sponsor: Dell Inc.

Tested by: Dell Inc.

Test date: May-2017

Hardware Availability: Jul-2017

Software Availability: Nov-2016



Hardware

CPU Name: Intel Xeon Platinum 8168
 CPU Characteristics: Intel Turbo Boost Technology up to 3.70 GHz
 CPU MHz: 2700
 FPU: Integrated
 CPU(s) enabled: 96 cores, 4 chips, 24 cores/chip, 2 threads/core
 CPU(s) orderable: 2,4 chip
 Primary Cache: 32 KB I + 32 KB D on chip per core
 Secondary Cache: 1 MB I+D on chip per core
 L3 Cache: 33 MB I+D on chip per chip
 Other Cache: None
 Memory: 768 GB (48 x 16 GB 2Rx8 PC4-2666V-R)
 Disk Subsystem: 1 x 960 GB SATA SSD
 Other Hardware: None

Software

Operating System: SUSE Linux Enterprise Server 12 SP2
 4.4.21-69-default
 Compiler: C/C++: Version 17.0.3.191 of Intel C/C++
 Compiler for Linux
 Auto Parallel: Yes
 File System: xfs
 System State: Run level 3 (multi-user)
 Base Pointers: 32-bit
 Peak Pointers: 32/64-bit
 Other Software: Microquill SmartHeap V10.2



SPEC CINT2006 Result

Copyright 2006-2017 Standard Performance Evaluation Corporation

Dell Inc.

PowerEdge R940 (Intel Xeon Platinum 8168, 2.70 GHz)

SPECint_rate2006 = 4980

SPECint_rate_base2006 = 4770

CPU2006 license: 55
Test sponsor: Dell Inc.
Tested by: Dell Inc.

Test date: May-2017
Hardware Availability: Jul-2017
Software Availability: Nov-2016

Results Table

Benchmark	Base							Peak						
	Copies	Seconds	Ratio	Seconds	Ratio	Seconds	Ratio	Copies	Seconds	Ratio	Seconds	Ratio	Seconds	Ratio
400.perlbench	192	492	3810	494	3800	<u>493</u>	<u>3800</u>	192	409	4590	411	4560	<u>411</u>	<u>4570</u>
401.bzip2	192	852	2170	<u>850</u>	<u>2180</u>	850	2180	192	<u>814</u>	<u>2280</u>	808	2290	814	2280
403.gcc	192	471	3280	472	3270	<u>472</u>	<u>3270</u>	192	<u>469</u>	<u>3290</u>	468	3300	470	3290
429.mcf	192	<u>297</u>	<u>5890</u>	299	5850	296	5920	192	<u>297</u>	<u>5890</u>	299	5850	296	5920
445.gobmk	192	634	3180	632	3190	<u>633</u>	<u>3180</u>	192	<u>633</u>	<u>3180</u>	635	3170	633	3180
456.hammer	192	<u>273</u>	<u>6570</u>	272	6600	273	6550	192	240	7450	239	7490	<u>240</u>	<u>7480</u>
458.sjeng	192	683	3400	<u>683</u>	<u>3400</u>	686	3390	192	636	3650	<u>635</u>	<u>3660</u>	634	3660
462.libquantum	192	<u>49.8</u>	<u>79900</u>	49.8	79900	49.8	79900	192	<u>49.8</u>	<u>79900</u>	49.8	79900	49.8	79900
464.h264ref	192	<u>746</u>	<u>5700</u>	747	5690	736	5770	192	728	5840	<u>724</u>	<u>5870</u>	716	5930
471.omnetpp	192	553	2170	551	2180	<u>552</u>	<u>2170</u>	192	527	2270	<u>527</u>	<u>2280</u>	527	2280
473.astar	192	531	2540	532	2530	<u>532</u>	<u>2530</u>	192	531	2540	532	2530	<u>532</u>	<u>2530</u>
483.xalancbmk	192	273	4850	<u>272</u>	<u>4870</u>	271	4890	192	273	4850	<u>272</u>	<u>4870</u>	271	4890

Results appear in the order in which they were run. Bold underlined text indicates a median measurement.

Submit Notes

The numactl mechanism was used to bind copies to processors. The config file option 'submit' was used to generate numactl commands to bind each copy to a specific processor. For details, please see the config file.

Operating System Notes

Stack size set to unlimited using "ulimit -s unlimited"

Platform Notes

BIOS settings:
Sub NUMA Cluster enabled
Virtualization Technology disabled
System Profile set to Custom
CPU Performance set to Maximum Performance
C States set to autonomous
C1E disabled
Uncore Frequency set to Dynamic
Energy Efficiency Policy set to Performance
Memory Patrol Scrub disabled
Logical Processor enabled
CPU Interconnect Bus Link Power Management disabled
PCI ASPM L1 Link Power Management disabled
Sysinfo program /home/cpu2006-1.2_ic17u3/config/sysinfo.rev6993
Revision 6993 of 2015-11-06 (b5e8d4b4eb51ed28d7f98696cbe290c1)
running on linux-kj6v Fri May 19 06:33:18 2017

Continued on next page



SPEC CINT2006 Result

Copyright 2006-2017 Standard Performance Evaluation Corporation

Dell Inc.

SPECint_rate2006 = 4980

PowerEdge R940 (Intel Xeon Platinum 8168, 2.70 GHz)

SPECint_rate_base2006 = 4770

CPU2006 license: 55

Test date: May-2017

Test sponsor: Dell Inc.

Hardware Availability: Jul-2017

Tested by: Dell Inc.

Software Availability: Nov-2016

Platform Notes (Continued)

This section contains SUT (System Under Test) info as seen by some common utilities. To remove or add to this section, see: <http://www.spec.org/cpu2006/Docs/config.html#sysinfo>

```

From /proc/cpuinfo
model name : Intel(R) Xeon(R) Platinum 8168 CPU @ 2.70GHz
 4 "physical id"s (chips)
192 "processors"
cores, siblings (Caution: counting these is hw and system dependent. The
following excerpts from /proc/cpuinfo might not be reliable. Use with
caution.)
cpu cores : 24
siblings : 48
physical 0: cores 0 1 2 3 4 5 8 9 10 11 12 13 16 17 18 19 20 21 24 25 26
27 28 29
physical 1: cores 0 1 2 3 4 5 8 9 10 11 12 13 16 17 18 19 20 21 24 25 26
27 28 29
physical 2: cores 0 1 2 3 4 5 8 9 10 11 12 13 16 17 18 19 20 21 24 25 26
27 28 29
physical 3: cores 0 1 2 3 4 5 8 9 10 11 12 13 16 17 18 19 20 21 24 25 26
27 28 29
cache size : 33792 KB

```

```

From /proc/meminfo
MemTotal:          791001148 kB
HugePages_Total:      0
Hugepagesize:       2048 kB

```

```

/usr/bin/lsc_release -d
SUSE Linux Enterprise Server 12 SP2

```

```

From /etc/*release* /etc/*version*
SuSE-release:
SUSE Linux Enterprise Server 12 (x86_64)
VERSION = 12
PATCHLEVEL = 2
# This file is deprecated and will be removed in a future service pack or
release.
# Please check /etc/os-release for details about this release.
os-release:
NAME="SLES"
VERSION="12-SP2"
VERSION_ID="12.2"
PRETTY_NAME="SUSE Linux Enterprise Server 12 SP2"
ID="sles"
ANSI_COLOR="0;32"
CPE_NAME="cpe:/o:suse:sles:12:sp2"

```

```

uname -a:
Linux linux-kj6v 4.4.21-69-default #1 SMP Tue Oct 25 10:58:20 UTC 2016
(9464f67) x86_64 x86_64 x86_64 GNU/Linux

```

Continued on next page



SPEC CINT2006 Result

Copyright 2006-2017 Standard Performance Evaluation Corporation

Dell Inc.

SPECint_rate2006 = 4980

PowerEdge R940 (Intel Xeon Platinum 8168, 2.70 GHz)

SPECint_rate_base2006 = 4770

CPU2006 license: 55

Test date: May-2017

Test sponsor: Dell Inc.

Hardware Availability: Jul-2017

Tested by: Dell Inc.

Software Availability: Nov-2016

Platform Notes (Continued)

run-level 3 May 19 06:32 last=5

SPEC is set to: /home/cpu2006-1.2_ic17u3

Filesystem	Type	Size	Used	Avail	Use%	Mounted on
/dev/sda4	xfs	796G	5.1G	791G	1%	/home

Additional information from dmidecode:

Warning: Use caution when you interpret this section. The 'dmidecode' program reads system data which is "intended to allow hardware to be accurately determined", but the intent may not be met, as there are frequent changes to hardware, firmware, and the "DMTF SMBIOS" standard.

BIOS Dell Inc. 0.5.8 05/12/2017

Memory:

48x 00CE063200CE M393A2K43BB1-CTD 16 GB 2 rank 2666 MHz

(End of data from sysinfo program)

General Notes

Environment variables set by runspec before the start of the run:

LD_LIBRARY_PATH = "/home/cpu2006-1.2_ic17u3/lib/ia32:/home/cpu2006-1.2_ic17u3/lib/intel64:/home/cpu2006-1.2_ic17u3/sh10.2"

Binaries compiled on a system with 1x Intel Core i7-4790 CPU + 32GB RAM memory using Redhat Enterprise Linux 7.2

Transparent Huge Pages enabled by default

Filesystem page cache cleared with:

shell invocation of 'sync; echo 3 > /proc/sys/vm/drop_caches' prior to run

runspec command invoked through numactl i.e.:

numactl --interleave=all runspec <etc>

Base Compiler Invocation

C benchmarks:

icc -m32 -L/opt/intel/compilers_and_libraries_2017/linux/lib/ia32

C++ benchmarks:

icpc -m32 -L/opt/intel/compilers_and_libraries_2017/linux/lib/ia32

Base Portability Flags

400.perlbench: -D_FILE_OFFSET_BITS=64 -DSPEC_CPU_LINUX_IA32

401.bzip2: -D_FILE_OFFSET_BITS=64

403.gcc: -D_FILE_OFFSET_BITS=64

429.mcf: -D_FILE_OFFSET_BITS=64

445.gobmk: -D_FILE_OFFSET_BITS=64

Continued on next page

Standard Performance Evaluation Corporation

info@spec.org

http://www.spec.org/

Page 4



SPEC CINT2006 Result

Copyright 2006-2017 Standard Performance Evaluation Corporation

Dell Inc.

PowerEdge R940 (Intel Xeon Platinum 8168, 2.70 GHz)

SPECint_rate2006 = 4980

SPECint_rate_base2006 = 4770

CPU2006 license: 55

Test sponsor: Dell Inc.

Tested by: Dell Inc.

Test date: May-2017

Hardware Availability: Jul-2017

Software Availability: Nov-2016

Base Portability Flags (Continued)

```

456.hmmer: -D_FILE_OFFSET_BITS=64
458.sjeng: -D_FILE_OFFSET_BITS=64
462.libquantum: -D_FILE_OFFSET_BITS=64 -DSPEC_CPU_LINUX
464.h264ref: -D_FILE_OFFSET_BITS=64
471.omnetpp: -D_FILE_OFFSET_BITS=64
473.astar: -D_FILE_OFFSET_BITS=64
483.xalancbmk: -D_FILE_OFFSET_BITS=64 -DSPEC_CPU_LINUX

```

Base Optimization Flags

C benchmarks:

```

-xCORE-AVX512 -ipo -O3 -no-prec-div -qopt-prefetch
-qopt-mem-layout-trans=3

```

C++ benchmarks:

```

-xCORE-AVX512 -ipo -O3 -no-prec-div -qopt-prefetch
-qopt-mem-layout-trans=3 -Wl,-z,muldefs -L/sh10.2 -lsmartheap

```

Base Other Flags

C benchmarks:

```

403.gcc: -Dalloca=_alloca

```

Peak Compiler Invocation

C benchmarks (except as noted below):

```

icc -m32 -L/opt/intel/compilers_and_libraries_2017/linux/lib/ia32

```

```

400.perlbench: icc -m64

```

```

401.bzip2: icc -m64

```

```

456.hmmer: icc -m64

```

```

458.sjeng: icc -m64

```

C++ benchmarks:

```

icpc -m32 -L/opt/intel/compilers_and_libraries_2017/linux/lib/ia32

```



SPEC CINT2006 Result

Copyright 2006-2017 Standard Performance Evaluation Corporation

Dell Inc.

SPECint_rate2006 = 4980

PowerEdge R940 (Intel Xeon Platinum 8168, 2.70 GHz)

SPECint_rate_base2006 = 4770

CPU2006 license: 55

Test date: May-2017

Test sponsor: Dell Inc.

Hardware Availability: Jul-2017

Tested by: Dell Inc.

Software Availability: Nov-2016

Peak Portability Flags

```

400.perlbench: -DSPEC_CPU_LP64 -DSPEC_CPU_LINUX_X64
401.bzip2: -DSPEC_CPU_LP64
403.gcc: -D_FILE_OFFSET_BITS=64
429.mcf: -D_FILE_OFFSET_BITS=64
445.gobmk: -D_FILE_OFFSET_BITS=64
456.hmmer: -DSPEC_CPU_LP64
458.sjeng: -DSPEC_CPU_LP64
462.libquantum: -D_FILE_OFFSET_BITS=64 -DSPEC_CPU_LINUX
464.h264ref: -D_FILE_OFFSET_BITS=64
471.omnetpp: -D_FILE_OFFSET_BITS=64
473.astar: -D_FILE_OFFSET_BITS=64
483.xalancbmk: -D_FILE_OFFSET_BITS=64 -DSPEC_CPU_LINUX

```

Peak Optimization Flags

C benchmarks:

```

400.perlbench: -prof-gen(pass 1) -prof-use(pass 2) -xCORE-AVX512(pass 2)
               -par-num-threads=1(pass 1) -ipo(pass 2) -O3(pass 2)
               -no-prec-div(pass 2) -auto-ilp32 -qopt-mem-layout-trans=3

401.bzip2: -prof-gen(pass 1) -prof-use(pass 2) -xCORE-AVX512(pass 2)
            -par-num-threads=1(pass 1) -ipo(pass 2) -O3(pass 2)
            -no-prec-div(pass 2) -qopt-prefetch -auto-ilp32
            -qopt-mem-layout-trans=3

403.gcc: -xCORE-AVX512 -ipo -O3 -no-prec-div
          -qopt-mem-layout-trans=3

429.mcf: basepeak = yes

445.gobmk: -prof-gen(pass 1) -prof-use(pass 2) -xCORE-AVX512(pass 2)
            -par-num-threads=1(pass 1) -ipo(pass 2) -O3(pass 2)
            -no-prec-div(pass 2) -qopt-mem-layout-trans=3

456.hmmer: -xCORE-AVX512 -ipo -O3 -no-prec-div -unroll2 -auto-ilp32
            -qopt-mem-layout-trans=3

458.sjeng: -prof-gen(pass 1) -prof-use(pass 2) -xCORE-AVX512(pass 2)
            -par-num-threads=1(pass 1) -ipo(pass 2) -O3(pass 2)
            -no-prec-div(pass 2) -unroll4 -auto-ilp32
            -qopt-mem-layout-trans=3

462.libquantum: basepeak = yes

464.h264ref: -prof-gen(pass 1) -prof-use(pass 2) -xCORE-AVX512(pass 2)
              -par-num-threads=1(pass 1) -ipo(pass 2) -O3(pass 2)
              -no-prec-div(pass 2) -unroll2 -qopt-mem-layout-trans=3

```

Continued on next page



SPEC CINT2006 Result

Copyright 2006-2017 Standard Performance Evaluation Corporation

Dell Inc.

PowerEdge R940 (Intel Xeon Platinum 8168, 2.70 GHz)

SPECint_rate2006 = 4980

SPECint_rate_base2006 = 4770

CPU2006 license: 55

Test sponsor: Dell Inc.

Tested by: Dell Inc.

Test date: May-2017

Hardware Availability: Jul-2017

Software Availability: Nov-2016

Peak Optimization Flags (Continued)

C++ benchmarks:

```
471.omnetpp: -prof-gen(pass 1) -prof-use(pass 2) -xCORE-AVX512(pass 2)
             -par-num-threads=1(pass 1) -ipo(pass 2) -O3(pass 2)
             -no-prec-div(pass 2)
             -qopt-ra-region-strategy=block
             -qopt-mem-layout-trans=3 -Wl,-z,muldefs
             -L/sh10.2 -lsmartheap
```

473.astar: basepeak = yes

483.xalancbmk: basepeak = yes

Peak Other Flags

C benchmarks:

```
403.gcc: -Dalloca=_alloca
```

The flags files that were used to format this result can be browsed at

<http://www.spec.org/cpu2006/flags/Intel-ic17.0-official-linux64-revF.html>

<http://www.spec.org/cpu2006/flags/Dell-Platform-Flags-PowerEdge14G-revB.html>

You can also download the XML flags sources by saving the following links:

<http://www.spec.org/cpu2006/flags/Intel-ic17.0-official-linux64-revF.xml>

<http://www.spec.org/cpu2006/flags/Dell-Platform-Flags-PowerEdge14G-revB.xml>

SPEC and SPECint are registered trademarks of the Standard Performance Evaluation Corporation. All other brand and product names appearing in this result are trademarks or registered trademarks of their respective holders.

For questions about this result, please contact the tester.
For other inquiries, please contact webmaster@spec.org.

Tested with SPEC CPU2006 v1.2.

Report generated on Wed Jul 12 12:13:04 2017 by SPEC CPU2006 PS/PDF formatter v6932.

Originally published on 11 July 2017.