



SPEC® CINT2006 Result

Copyright 2006-2017 Standard Performance Evaluation Corporation

Dell Inc.

SPECint®2006 = 73.9

PowerEdge R730 (Intel Xeon E5-2699 v4, 2.20 GHz)

SPECint_base2006 = 71.7

CPU2006 license: 55

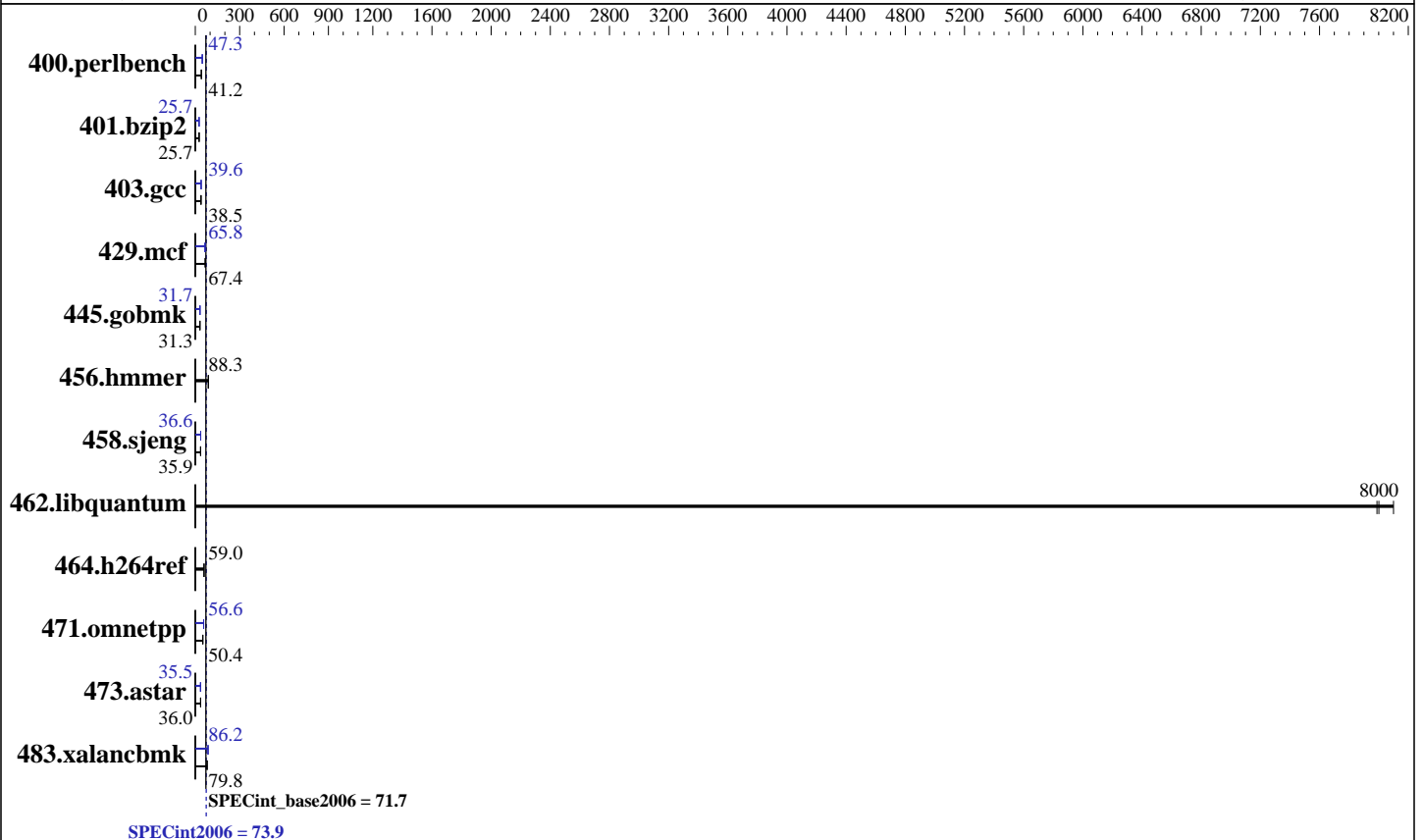
Test date: Feb-2017

Test sponsor: Dell Inc.

Hardware Availability: Mar-2016

Tested by: Dell Inc.

Software Availability: Nov-2016



Hardware

CPU Name: Intel Xeon E5-2699 v4
 CPU Characteristics: Intel Turbo Boost Technology up to 3.60 GHz
 CPU MHz: 2200
 FPU: Integrated
 CPU(s) enabled: 44 cores, 2 chips, 22 cores/chip
 CPU(s) orderable: 1,2 chips
 Primary Cache: 32 KB I + 32 KB D on chip per core
 Secondary Cache: 256 KB I+D on chip per core
 L3 Cache: 55 MB I+D on chip per chip
 Other Cache: None
 Memory: 256 GB (16 x 16 GB 2Rx8 PC4-2400T-R)
 Disk Subsystem: 2 x 2000 GB 7200 RPM SAS RAID 0
 Other Hardware: None

Software

Operating System: SUSE Linux Enterprise Server 12
 3.12.28-4-default
 Compiler: C/C++: Version 17.0.0.098 of Intel C/C++
 Compiler for Linux
 Auto Parallel: Yes
 File System: ext4
 System State: Run level 3 (multi-user)
 Base Pointers: 32/64-bit
 Peak Pointers: 32/64-bit
 Other Software: Microquill SmartHeap V10.2



SPEC CINT2006 Result

Copyright 2006-2017 Standard Performance Evaluation Corporation

Dell Inc.

SPECint2006 = 73.9

PowerEdge R730 (Intel Xeon E5-2699 v4, 2.20 GHz)

SPECint_base2006 = 71.7

CPU2006 license: 55
Test sponsor: Dell Inc.
Tested by: Dell Inc.

Test date: Feb-2017
Hardware Availability: Mar-2016
Software Availability: Nov-2016

Results Table

| Benchmark | Base | | | | | | Peak | | | | | |
|----------------|-------------|-------------|-------------|-------------|------------|-------------|-------------|-------------|------------|-------------|-------------|-------------|
| | Seconds | Ratio | Seconds | Ratio | Seconds | Ratio | Seconds | Ratio | Seconds | Ratio | Seconds | Ratio |
| 400.perlbench | <u>237</u> | <u>41.2</u> | 237 | 41.2 | 238 | 41.0 | 206 | 47.4 | <u>206</u> | <u>47.3</u> | 206 | 47.3 |
| 401.bzip2 | 376 | 25.7 | 374 | 25.8 | <u>375</u> | <u>25.7</u> | <u>375</u> | <u>25.7</u> | 376 | 25.7 | 375 | 25.8 |
| 403.gcc | 209 | 38.5 | 209 | 38.6 | <u>209</u> | <u>38.5</u> | 206 | 39.1 | 203 | 39.7 | <u>203</u> | <u>39.6</u> |
| 429.mcf | 135 | 67.3 | 135 | 67.4 | <u>135</u> | <u>67.4</u> | 139 | 65.8 | <u>139</u> | <u>65.8</u> | 137 | 66.5 |
| 445.gobmk | <u>335</u> | <u>31.3</u> | 336 | 31.3 | 335 | 31.3 | <u>331</u> | <u>31.7</u> | 331 | 31.7 | 332 | 31.6 |
| 456.hammer | <u>106</u> | <u>88.3</u> | 106 | 88.3 | 106 | 88.3 | <u>106</u> | <u>88.3</u> | 106 | 88.3 | 106 | 88.3 |
| 458.sjeng | <u>337</u> | <u>35.9</u> | 338 | 35.8 | 337 | 35.9 | <u>331</u> | <u>36.6</u> | 331 | 36.6 | 330 | 36.6 |
| 462.libquantum | <u>2.59</u> | <u>8000</u> | 2.56 | 8100 | 2.59 | 7990 | <u>2.59</u> | <u>8000</u> | 2.56 | 8100 | 2.59 | 7990 |
| 464.h264ref | 375 | 59.0 | 375 | 59.0 | <u>375</u> | <u>59.0</u> | 375 | 59.0 | 375 | 59.0 | <u>375</u> | <u>59.0</u> |
| 471.omnetpp | 124 | 50.3 | <u>124</u> | <u>50.4</u> | 121 | 51.6 | 110 | 56.8 | 111 | 56.3 | <u>110</u> | <u>56.6</u> |
| 473.astar | <u>195</u> | <u>36.0</u> | 195 | 36.0 | 196 | 35.9 | 197 | 35.6 | <u>198</u> | <u>35.5</u> | 198 | 35.4 |
| 483.xalancbmk | 86.9 | 79.4 | <u>86.4</u> | <u>79.8</u> | 86.4 | 79.9 | 79.9 | 86.4 | 80.2 | 86.1 | <u>80.0</u> | <u>86.2</u> |

Results appear in the order in which they were run. Bold underlined text indicates a median measurement.

Submit Notes

The numactl mechanism was used to bind copies to processors. The config file option 'submit' was used to generate numactl commands to bind each copy to a specific processor. For details, please see the config file.

Operating System Notes

Stack size set to unlimited using "ulimit -s unlimited"

Platform Notes

BIOS settings:
Snoop Mode set to Opportunistic Snoop Broadcast
Virtualization Technology disabled
System Profile set to Custom
CPU Performance set to Maximum Performance
C States set to Autonomous
C1E disabled
Energy Efficient Turbo disabled
Uncore Frequency set to Dynamic
Energy Efficiency Policy set to Performance
Memory Patrol Scrub disabled
Logical Processor disabled
Sysinfo program /root/previous-cpu2006-1.2/config/sysinfo.rev6993
Revision 6993 of 2015-11-06 (b5e8d4b4eb51ed28d7f98696cbe290c1)
running on linux-0171 Fri Feb 3 11:06:58 2017

This section contains SUT (System Under Test) info as seen by
Continued on next page



SPEC CINT2006 Result

Copyright 2006-2017 Standard Performance Evaluation Corporation

Dell Inc.

SPECint2006 = 73.9

PowerEdge R730 (Intel Xeon E5-2699 v4, 2.20 GHz)

SPECint_base2006 = 71.7

CPU2006 license: 55

Test date: Feb-2017

Test sponsor: Dell Inc.

Hardware Availability: Mar-2016

Tested by: Dell Inc.

Software Availability: Nov-2016

Platform Notes (Continued)

some common utilities. To remove or add to this section, see:
<http://www.spec.org/cpu2006/Docs/config.html#sysinfo>

```

From /proc/cpuinfo
  model name : Intel(R) Xeon(R) CPU E5-2699 v4 @ 2.20GHz
    2 "physical id"s (chips)
    44 "processors"
  cores, siblings (Caution: counting these is hw and system dependent. The
  following excerpts from /proc/cpuinfo might not be reliable. Use with
  caution.)
    cpu cores : 22
    siblings  : 22
    physical 0: cores 0 1 2 3 4 5 8 9 10 11 12 16 17 18 19 20 21 24 25 26 27
    28
    physical 1: cores 0 1 2 3 4 5 8 9 10 11 12 16 17 18 19 20 21 24 25 26 27
    28
  cache size : 56320 KB

```

```

From /proc/meminfo
MemTotal:      264567484 kB
HugePages_Total:      0
Hugepagesize:    2048 kB

```

```

/usr/bin/lsb_release -d
SUSE Linux Enterprise Server 12

```

```

From /etc/*release* /etc/*version*
SuSE-release:
SUSE Linux Enterprise Server 12 (x86_64)
VERSION = 12
PATCHLEVEL = 0
# This file is deprecated and will be removed in a future service pack or
release.
# Please check /etc/os-release for details about this release.
os-release:
NAME="SLES"
VERSION="12"
VERSION_ID="12"
PRETTY_NAME="SUSE Linux Enterprise Server 12"
ID="sles"
ANSI_COLOR="0;32"
CPE_NAME="cpe:/o:suse:sles:12"

```

```

uname -a:
Linux linux-0171 3.12.28-4-default #1 SMP Thu Sep 25 17:02:34 UTC 2014
(9879bd4) x86_64 x86_64 x86_64 GNU/Linux

```

run-level 3 Feb 3 10:58

```

SPEC is set to: /root/previous-cpu2006-1.2
Filesystem      Type  Size  Used Avail Use% Mounted on
/dev/sda2       ext4  246G  19G  226G   8% /
Continued on next page

```



SPEC CINT2006 Result

Copyright 2006-2017 Standard Performance Evaluation Corporation

Dell Inc.

SPECint2006 = 73.9

PowerEdge R730 (Intel Xeon E5-2699 v4, 2.20 GHz)

SPECint_base2006 = 71.7

CPU2006 license: 55

Test date: Feb-2017

Test sponsor: Dell Inc.

Hardware Availability: Mar-2016

Tested by: Dell Inc.

Software Availability: Nov-2016

Platform Notes (Continued)

Additional information from dmidecode:

Warning: Use caution when you interpret this section. The 'dmidecode' program reads system data which is "intended to allow hardware to be accurately determined", but the intent may not be met, as there are frequent changes to hardware, firmware, and the "DMTF SMBIOS" standard.

BIOS Dell Inc. 2.3.4 11/08/2016

Memory:

7x 00AD063200AD HMA82GR7MFR8N-UH 16 GB 2 rank 2400 MHz
9x 00CE00B300CE M393A2K43BB1-CRC 16 GB 2 rank 2400 MHz
8x Not Specified Not Specified

(End of data from sysinfo program)

General Notes

Environment variables set by runspec before the start of the run:

KMP_AFFINITY = "granularity=fine,scatter"

LD_LIBRARY_PATH = "/root/previous-cpu2006-1.2/libs/32:/root/previous-cpu2006-1.2/libs/64:/root/previous-cpu2006-1.2/sh10.2"

OMP_NUM_THREADS = "20"

The Dell PowerEdge R730 and the PowerEdge R730xd models are electronically equivalent.

The results have been measured on a Dell PowerEdge R730xd model.

Binaries compiled on a system with 1x Intel Core i7-4790K CPU + 32GB RAM

memory using Redhat Enterprise Linux 7.2

Transparent Huge Pages enabled with:

echo always > /sys/kernel/mm/transparent_hugepage/enabled

Base Compiler Invocation

C benchmarks:

icc -m64

C++ benchmarks:

icpc -m64

Base Portability Flags

400.perlbench: -DSPEC_CPU_LP64 -DSPEC_CPU_LINUX_X64
401.bzip2: -DSPEC_CPU_LP64
403.gcc: -DSPEC_CPU_LP64
429.mcf: -DSPEC_CPU_LP64
445.gobmk: -DSPEC_CPU_LP64
456.hmmer: -DSPEC_CPU_LP64
458.sjeng: -DSPEC_CPU_LP64
462.libquantum: -DSPEC_CPU_LP64 -DSPEC_CPU_LINUX

Continued on next page

Standard Performance Evaluation Corporation

info@spec.org

http://www.spec.org/

Page 4



SPEC CINT2006 Result

Copyright 2006-2017 Standard Performance Evaluation Corporation

Dell Inc.

SPECint2006 = 73.9

PowerEdge R730 (Intel Xeon E5-2699 v4, 2.20 GHz)

SPECint_base2006 = 71.7

CPU2006 license: 55

Test date: Feb-2017

Test sponsor: Dell Inc.

Hardware Availability: Mar-2016

Tested by: Dell Inc.

Software Availability: Nov-2016

Base Portability Flags (Continued)

464.h264ref: -DSPEC_CPU_LP64
471.omnetpp: -DSPEC_CPU_LP64
473.astar: -DSPEC_CPU_LP64
483.xalancbmk: -DSPEC_CPU_LP64 -DSPEC_CPU_LINUX

Base Optimization Flags

C benchmarks:

-xCORE-AVX2 -ipo -O3 -no-prec-div -parallel -qopt-prefetch
-auto-p32

C++ benchmarks:

-xCORE-AVX2 -ipo -O3 -no-prec-div -qopt-prefetch -auto-p32
-Wl,-z,muldefs -L/sh10.2 -lsmartheap64

Base Other Flags

C benchmarks:

403.gcc: -Dalloca=_alloca

Peak Compiler Invocation

C benchmarks (except as noted below):

icc -m64

400.perlbench: icc -m32 -L/opt/intel/compilers_and_libraries_2017/linux/lib/ia32

445.gobmk: icc -m32 -L/opt/intel/compilers_and_libraries_2017/linux/lib/ia32

C++ benchmarks (except as noted below):

icc -m32 -L/opt/intel/compilers_and_libraries_2017/linux/lib/ia32

473.astar: icpc -m64

Peak Portability Flags

400.perlbench: -D_FILE_OFFSET_BITS=64 -DSPEC_CPU_LINUX_IA32

401.bzip2: -DSPEC_CPU_LP64

403.gcc: -DSPEC_CPU_LP64

429.mcf: -DSPEC_CPU_LP64

Continued on next page

Standard Performance Evaluation Corporation

info@spec.org

http://www.spec.org/



SPEC CINT2006 Result

Copyright 2006-2017 Standard Performance Evaluation Corporation

Dell Inc.

SPECint2006 = 73.9

PowerEdge R730 (Intel Xeon E5-2699 v4, 2.20 GHz)

SPECint_base2006 = 71.7

CPU2006 license: 55

Test date: Feb-2017

Test sponsor: Dell Inc.

Hardware Availability: Mar-2016

Tested by: Dell Inc.

Software Availability: Nov-2016

Peak Portability Flags (Continued)

445.gobmk: -D_FILE_OFFSET_BITS=64
 456.hmmer: -DSPEC_CPU_LP64
 458.sjeng: -DSPEC_CPU_LP64
 462.libquantum: -DSPEC_CPU_LP64 -DSPEC_CPU_LINUX
 464.h264ref: -DSPEC_CPU_LP64
 471.omnetpp: -D_FILE_OFFSET_BITS=64
 473.astar: -DSPEC_CPU_LP64
 483.xalancbmk: -D_FILE_OFFSET_BITS=64 -DSPEC_CPU_LINUX

Peak Optimization Flags

C benchmarks:

400.perlbench: -prof-gen(pass 1) -prof-use(pass 2) -xCORE-AVX2(pass 2)
 -par-num-threads=1(pass 1) -ipo(pass 2) -O3(pass 2)
 -no-prec-div(pass 2) -qopt-prefetch

401.bzip2: -prof-gen(pass 1) -prof-use(pass 2) -xCORE-AVX2(pass 2)
 -par-num-threads=1(pass 1) -ipo(pass 2) -O3(pass 2)
 -no-prec-div -auto-ilp32 -qopt-prefetch

403.gcc: -xCORE-AVX2 -ipo -O3 -no-prec-div -inline-calloc
 -qopt-malloc-options=3 -auto-ilp32

429.mcf: -xCORE-AVX2 -ipo -O3 -no-prec-div -parallel
 -qopt-prefetch -auto-p32

445.gobmk: -prof-gen(pass 1) -prof-use(pass 2) -xCORE-AVX2(pass 2)
 -par-num-threads=1(pass 1) -ipo(pass 2) -O3(pass 2)
 -no-prec-div(pass 2)

456.hmmer: basepeak = yes

458.sjeng: -prof-gen(pass 1) -prof-use(pass 2) -xCORE-AVX2(pass 2)
 -par-num-threads=1(pass 1) -ipo(pass 2) -O3(pass 2)
 -no-prec-div(pass 2) -unroll4

462.libquantum: basepeak = yes

464.h264ref: basepeak = yes

C++ benchmarks:

471.omnetpp: -prof-gen(pass 1) -prof-use(pass 2) -xCORE-AVX2(pass 2)
 -par-num-threads=1(pass 1) -ipo(pass 2) -O3(pass 2)
 -no-prec-div(pass 2) -qopt-ra-region-strategy=block
 -Wl,-z,muldefs -L/sh10.2 -lsmartheap

Continued on next page



SPEC CINT2006 Result

Copyright 2006-2017 Standard Performance Evaluation Corporation

Dell Inc.

SPECint2006 = 73.9

PowerEdge R730 (Intel Xeon E5-2699 v4, 2.20 GHz)

SPECint_base2006 = 71.7

CPU2006 license: 55

Test date: Feb-2017

Test sponsor: Dell Inc.

Hardware Availability: Mar-2016

Tested by: Dell Inc.

Software Availability: Nov-2016

Peak Optimization Flags (Continued)

473.astar: -xCORE-AVX2 -ipo -O3 -no-prec-div -qopt-prefetch
-auto-p32 -Wl,-z,muldefs -L/sh10.2 -lsmartheap64

483.xalancbmk: -xCORE-AVX2 -ipo -O3 -no-prec-div -qopt-prefetch
-Wl,-z,muldefs -L/sh10.2 -lsmartheap

Peak Other Flags

C benchmarks:

403.gcc: -Dalloca=_alloca

The flags files that were used to format this result can be browsed at

<http://www.spec.org/cpu2006/flags/Intel-ic17.0-official-linux64.html>

<http://www.spec.org/cpu2006/flags/Dell-Platform-Flags-PowerEdge13G-revE.html>

You can also download the XML flags sources by saving the following links:

<http://www.spec.org/cpu2006/flags/Intel-ic17.0-official-linux64.xml>

<http://www.spec.org/cpu2006/flags/Dell-Platform-Flags-PowerEdge13G-revE.xml>

SPEC and SPECint are registered trademarks of the Standard Performance Evaluation Corporation. All other brand and product names appearing in this result are trademarks or registered trademarks of their respective holders.

For questions about this result, please contact the tester.
For other inquiries, please contact webmaster@spec.org.

Tested with SPEC CPU2006 v1.2.

Report generated on Tue Mar 7 16:14:46 2017 by SPEC CPU2006 PS/PDF formatter v6932.

Originally published on 7 March 2017.