



SPEC® CINT2006 Result

Copyright 2006-2017 Standard Performance Evaluation Corporation

Inspur Corporation

SPECint®_rate2006 = 3640

Inspur NF8460M4 (Intel Xeon E7-8890 v4)

SPECint_rate_base2006 = 3510

CPU2006 license: 3358

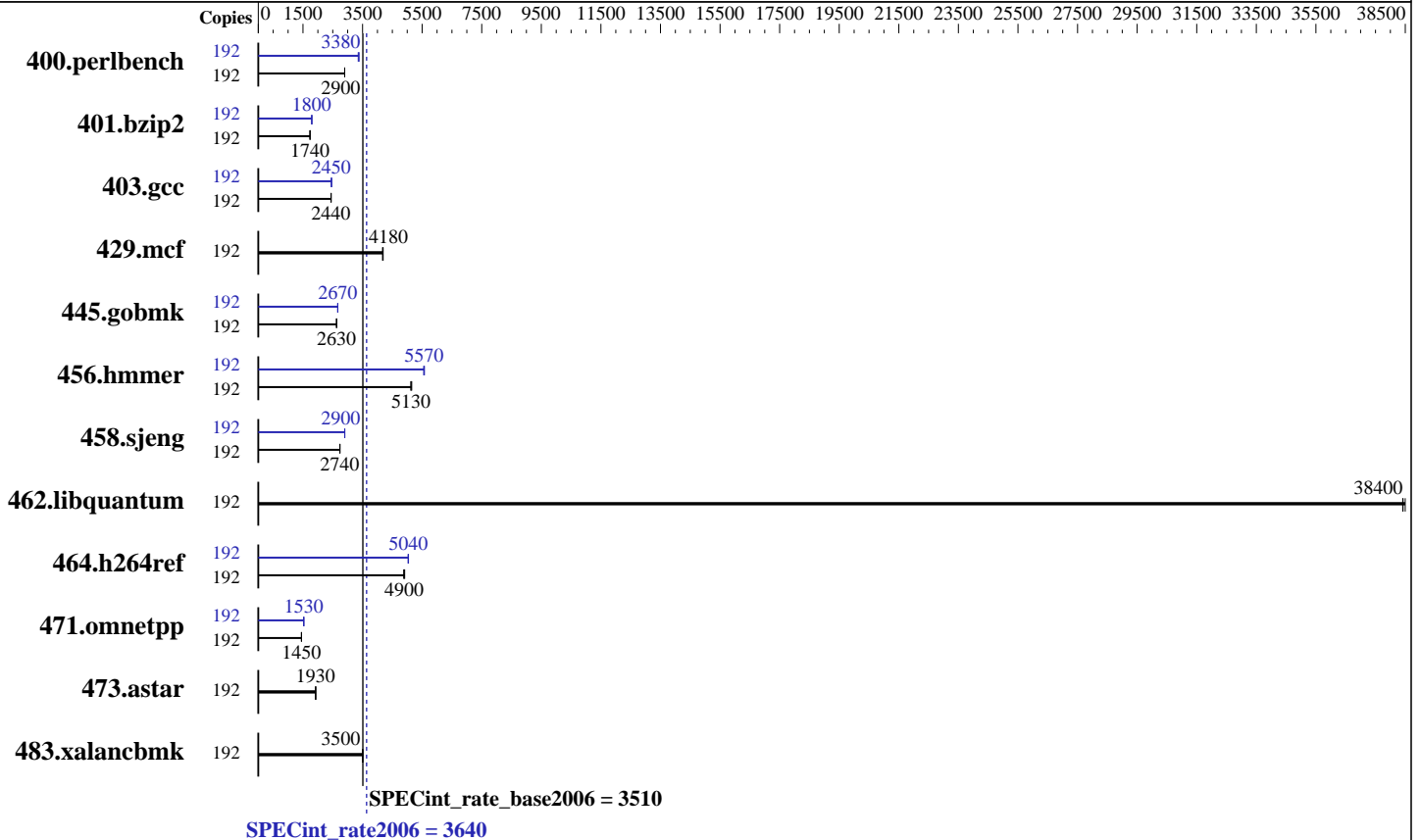
Test date: Jan-2017

Test sponsor: Inspur Corporation

Hardware Availability: Jun-2016

Tested by: Inspur Corporation

Software Availability: Mar-2016



Hardware

CPU Name: Intel Xeon E7-8890 v4
 CPU Characteristics: Intel Turbo Boost Technology up to 3.40 GHz
 CPU MHz: 2200
 FPU: Integrated
 CPU(s) enabled: 96 cores, 4 chips, 24 cores/chip, 2 threads/core
 CPU(s) orderable: 2,4 chip
 Primary Cache: 32 KB I + 32 KB D on chip per core
 Secondary Cache: 256 KB I+D on chip per core
 L3 Cache: 60 MB I+D on chip per chip
 Other Cache: None
 Memory: 512 GB (32 x 16 GB 2Rx4 PC4-2400T-R, running at 1600 MHz)
 Disk Subsystem: 1 x 600 GB SATA SSD
 Other Hardware: None

Software

Operating System: Inspur K-UX release 3.0.5 (Inspur) 3.10.4-K_UX.x86_64
 Compiler: C/C++: Version 17.0.0.098 of Intel C/C++ Compiler for Linux
 Auto Parallel: No
 File System: xfs
 System State: Run level 5 (multi-user)
 Base Pointers: 32-bit
 Peak Pointers: 32/64-bit
 Other Software: Microquill SmartHeap V10.2



SPEC CINT2006 Result

Copyright 2006-2017 Standard Performance Evaluation Corporation

Inspur Corporation

SPECint_rate2006 = 3640

Inspur NF8460M4 (Intel Xeon E7-8890 v4)

SPECint_rate_base2006 = 3510

CPU2006 license: 3358

Test date: Jan-2017

Test sponsor: Inspur Corporation

Hardware Availability: Jun-2016

Tested by: Inspur Corporation

Software Availability: Mar-2016

Results Table

Benchmark	Base							Peak						
	Copies	Seconds	Ratio	Seconds	Ratio	Seconds	Ratio	Copies	Seconds	Ratio	Seconds	Ratio	Seconds	Ratio
400.perlbench	192	647	2900	647	2900	647	2900	192	559	3350	556	3380	555	3380
401.bzip2	192	1065	1740	1065	1740	1069	1730	192	1033	1790	1032	1800	1030	1800
403.gcc	192	632	2450	633	2440	633	2440	192	630	2450	628	2460	630	2450
429.mcf	192	419	4180	418	4190	420	4170	192	419	4180	418	4190	420	4170
445.gobmk	192	766	2630	766	2630	767	2630	192	755	2670	755	2670	755	2670
456.hammer	192	348	5150	350	5120	349	5130	192	323	5550	322	5570	321	5580
458.sjeng	192	848	2740	848	2740	848	2740	192	800	2900	801	2900	800	2900
462.libquantum	192	104	38400	103	38500	104	38400	192	104	38400	103	38500	104	38400
464.h264ref	192	870	4880	865	4910	868	4900	192	843	5040	845	5030	844	5040
471.omnetpp	192	828	1450	828	1450	828	1450	192	786	1530	786	1530	786	1530
473.astar	192	699	1930	700	1930	700	1920	192	699	1930	700	1930	700	1920
483.xalancbmk	192	377	3510	379	3500	379	3500	192	377	3510	379	3500	379	3500

Results appear in the order in which they were run. Bold underlined text indicates a median measurement.

Submit Notes

The numactl mechanism was used to bind copies to processors. The config file option 'submit' was used to generate numactl commands to bind each copy to a specific processor. For details, please see the config file.

Operating System Notes

Stack size set to unlimited using "ulimit -s unlimited"

Platform Notes

BIOS and OS configuration:
SCALING_GOVERNOR set to Performance
Hardware Prefetch set to Disable
VT Support set to Disable
C1E Support set to Disable
Sysinfo program /home/CPU2006/config/sysinfo.rev6993
Revision 6993 of 2015-11-06 (b5e8d4b4eb51ed28d7f98696cbe290c1)
running on localhost.localdomain Wed Jan 4 05:44:48 2017

This section contains SUT (System Under Test) info as seen by some common utilities. To remove or add to this section, see:
<http://www.spec.org/cpu2006/Docs/config.html#sysinfo>

From /proc/cpuinfo
model name : Intel(R) Xeon(R) CPU E7-8890 v4 @ 2.20GHz
4 "physical id"s (chips)
192 "processors"

Continued on next page



SPEC CINT2006 Result

Copyright 2006-2017 Standard Performance Evaluation Corporation

Inspur Corporation

SPECint_rate2006 = 3640

Inspur NF8460M4 (Intel Xeon E7-8890 v4)

SPECint_rate_base2006 = 3510

CPU2006 license: 3358

Test sponsor: Inspur Corporation

Tested by: Inspur Corporation

Test date: Jan-2017

Hardware Availability: Jun-2016

Software Availability: Mar-2016

Platform Notes (Continued)

cores, siblings (Caution: counting these is hw and system dependent. The following excerpts from /proc/cpuinfo might not be reliable. Use with caution.)

```

cpu cores : 24
siblings  : 48
physical 0: cores 0 1 2 3 4 5 8 9 10 11 12 13 16 17 18 19 20 21 24 25 26
27 28 29
physical 1: cores 0 1 2 3 4 5 8 9 10 11 12 13 16 17 18 19 20 21 24 25 26
27 28 29
physical 2: cores 0 1 2 3 4 5 8 9 10 11 12 13 16 17 18 19 20 21 24 25 26
27 28 29
physical 3: cores 0 1 2 3 4 5 8 9 10 11 12 13 16 17 18 19 20 21 24 25 26
27 28 29

```

cache size : 61440 KB

From /proc/meminfo

```

MemTotal:      528262276 kB
HugePages_Total:      0
Hugepagesize:    2048 kB

```

From /etc/*release* /etc/*version*

```

inspur-release: Inspur K-UX release 3.0.5 (Inspur)
os-release:
NAME="Inspur K-UX"
VERSION="3 (Inspur)"
ID="k-ux"
VERSION_ID="3"
PRETTY_NAME="Inspur K-UX 3 (Inspur)"
ANSI_COLOR="0;31"
CPE_NAME="cpe:/o:k-ux:k-ux:3"
HOME_URL="http://www.inspur.com/"
system-release: Inspur K-UX release 3.0.5 (Inspur)
system-release-cpe: cpe:/o:k-ux:k-ux:3

```

uname -a:

```

Linux localhost.localdomain 3.10.4-K_UX.x86_64 #1 SMP Fri Sep 30 11:06:29 GMT
2016 x86_64 x86_64 x86_64 GNU/Linux

```

SPEC is set to: /home/CPU2006

```

Filesystem      Type  Size  Used Avail Use% Mounted on
/dev/mapper/ik-home xfs  225G  8.5G  216G   4% /home

```

Additional information from dmidecode:

Warning: Use caution when you interpret this section. The 'dmidecode' program reads system data which is "intended to allow hardware to be accurately determined", but the intent may not be met, as there are frequent changes to hardware, firmware, and the "DMTF SMBIOS" standard.

BIOS Inspur 4.0.4 11/04/2016

Memory:

```

32x Samsung M393A2G40EB1-CRC 16 GB 2 rank 2400 MHz, configured at 1600 MHz

```

Continued on next page



SPEC CINT2006 Result

Copyright 2006-2017 Standard Performance Evaluation Corporation

Inspur Corporation

SPECint_rate2006 = 3640

Inspur NF8460M4 (Intel Xeon E7-8890 v4)

SPECint_rate_base2006 = 3510

CPU2006 license: 3358

Test sponsor: Inspur Corporation

Tested by: Inspur Corporation

Test date: Jan-2017

Hardware Availability: Jun-2016

Software Availability: Mar-2016

Platform Notes (Continued)

(End of data from sysinfo program)

General Notes

Environment variables set by runspec before the start of the run:

LD_LIBRARY_PATH = "/home/CPU2006/libs/32:/home/CPU2006/libs/64:/home/CPU2006/sh10.2"

Binaries compiled on a system with 1x Intel Core i7-4790K CPU + 32GB RAM
memory using Redhat Enterprise Linux 7.2

Transparent Huge Pages enabled by default

Filesystem page cache cleared with:

```
echo 1 > /proc/sys/vm/drop_caches
```

runspec command invoked through numactl i.e.:

```
numactl --interleave=all runspec <etc>
```

Base Compiler Invocation

C benchmarks:

```
icc -m32 -L/opt/intel/compilers_and_libraries_2017/linux/lib/ia32
```

C++ benchmarks:

```
icpc -m32 -L/opt/intel/compilers_and_libraries_2017/linux/lib/ia32
```

Base Portability Flags

```
400.perlbench: -D_FILE_OFFSET_BITS=64 -DSPEC_CPU_LINUX_IA32
401.bzip2: -D_FILE_OFFSET_BITS=64
403.gcc: -D_FILE_OFFSET_BITS=64
429.mcf: -D_FILE_OFFSET_BITS=64
445.gobmk: -D_FILE_OFFSET_BITS=64
456.hmmer: -D_FILE_OFFSET_BITS=64
458.sjeng: -D_FILE_OFFSET_BITS=64
462.libquantum: -D_FILE_OFFSET_BITS=64 -DSPEC_CPU_LINUX
464.h264ref: -D_FILE_OFFSET_BITS=64
471.omnetpp: -D_FILE_OFFSET_BITS=64
473.astar: -D_FILE_OFFSET_BITS=64
483.xalancbmk: -D_FILE_OFFSET_BITS=64 -DSPEC_CPU_LINUX
```

Base Optimization Flags

C benchmarks:

```
-xCORE-AVX2 -ipo -O3 -no-prec-div -qopt-prefetch
-qopt-mem-layout-trans=3
```

Continued on next page



SPEC CINT2006 Result

Copyright 2006-2017 Standard Performance Evaluation Corporation

Inspur Corporation

SPECint_rate2006 = 3640

Inspur NF8460M4 (Intel Xeon E7-8890 v4)

SPECint_rate_base2006 = 3510

CPU2006 license: 3358

Test date: Jan-2017

Test sponsor: Inspur Corporation

Hardware Availability: Jun-2016

Tested by: Inspur Corporation

Software Availability: Mar-2016

Base Optimization Flags (Continued)

C++ benchmarks:

-xCORE-AVX2 -ipo -O3 -no-prec-div -qopt-prefetch
-qopt-mem-layout-trans=3 -Wl,-z,muldefs -L/sh10.2 -lsmartheap

Base Other Flags

C benchmarks:

403.gcc: -Dalloca=_alloca

Peak Compiler Invocation

C benchmarks (except as noted below):

icc -m32 -L/opt/intel/compilers_and_libraries_2017/linux/lib/ia32

400.perlbench: icc -m64

401.bzip2: icc -m64

456.hmmer: icc -m64

458.sjeng: icc -m64

C++ benchmarks:

icpc -m32 -L/opt/intel/compilers_and_libraries_2017/linux/lib/ia32

Peak Portability Flags

400.perlbench: -DSPEC_CPU_LP64 -DSPEC_CPU_LINUX_X64

401.bzip2: -DSPEC_CPU_LP64

403.gcc: -D_FILE_OFFSET_BITS=64

429.mcf: -D_FILE_OFFSET_BITS=64

445.gobmk: -D_FILE_OFFSET_BITS=64

456.hmmer: -DSPEC_CPU_LP64

458.sjeng: -DSPEC_CPU_LP64

462.libquantum: -D_FILE_OFFSET_BITS=64 -DSPEC_CPU_LINUX

464.h264ref: -D_FILE_OFFSET_BITS=64

471.omnetpp: -D_FILE_OFFSET_BITS=64

473.astar: -D_FILE_OFFSET_BITS=64

483.xalancbmk: -D_FILE_OFFSET_BITS=64 -DSPEC_CPU_LINUX



SPEC CINT2006 Result

Copyright 2006-2017 Standard Performance Evaluation Corporation

Inspur Corporation

SPECint_rate2006 = 3640

Inspur NF8460M4 (Intel Xeon E7-8890 v4)

SPECint_rate_base2006 = 3510

CPU2006 license: 3358

Test date: Jan-2017

Test sponsor: Inspur Corporation

Hardware Availability: Jun-2016

Tested by: Inspur Corporation

Software Availability: Mar-2016

Peak Optimization Flags

C benchmarks:

400.perlbench: -prof-gen(pass 1) -prof-use(pass 2) -xCORE-AVX2(pass 2)
-par-num-threads=1(pass 1) -ipo(pass 2) -O3(pass 2)
-no-prec-div(pass 2) -auto-ilp32 -qopt-mem-layout-trans=3

401.bzip2: -prof-gen(pass 1) -prof-use(pass 2) -xCORE-AVX2(pass 2)
-par-num-threads=1(pass 1) -ipo(pass 2) -O3(pass 2)
-no-prec-div(pass 2) -qopt-prefetch -auto-ilp32
-qopt-mem-layout-trans=3

403.gcc: -xCORE-AVX2 -ipo -O3 -no-prec-div
-qopt-mem-layout-trans=3

429.mcf: basepeak = yes

445.gobmk: -prof-gen(pass 1) -prof-use(pass 2) -xCORE-AVX2(pass 2)
-par-num-threads=1(pass 1) -ipo(pass 2) -O3(pass 2)
-no-prec-div(pass 2) -qopt-mem-layout-trans=3

456.hmmer: -xCORE-AVX2 -ipo -O3 -no-prec-div -unroll2 -auto-ilp32
-qopt-mem-layout-trans=3

458.sjeng: -prof-gen(pass 1) -prof-use(pass 2) -xCORE-AVX2(pass 2)
-par-num-threads=1(pass 1) -ipo(pass 2) -O3(pass 2)
-no-prec-div(pass 2) -unroll4 -auto-ilp32
-qopt-mem-layout-trans=3

462.libquantum: basepeak = yes

464.h264ref: -prof-gen(pass 1) -prof-use(pass 2) -xCORE-AVX2(pass 2)
-par-num-threads=1(pass 1) -ipo(pass 2) -O3(pass 2)
-no-prec-div(pass 2) -unroll2 -qopt-mem-layout-trans=3

C++ benchmarks:

471.omnetpp: -prof-gen(pass 1) -prof-use(pass 2) -xCORE-AVX2(pass 2)
-par-num-threads=1(pass 1) -ipo(pass 2) -O3(pass 2)
-no-prec-div(pass 2)
-qopt-ra-region-strategy=block
-qopt-mem-layout-trans=3 -Wl,-z,muldefs
-L/sh10.2 -lsmartheap

473.astar: basepeak = yes

483.xalancbmk: basepeak = yes



SPEC CINT2006 Result

Copyright 2006-2017 Standard Performance Evaluation Corporation

Inspur Corporation

SPECint_rate2006 = 3640

Inspur NF8460M4 (Intel Xeon E7-8890 v4)

SPECint_rate_base2006 = 3510

CPU2006 license: 3358

Test sponsor: Inspur Corporation

Tested by: Inspur Corporation

Test date: Jan-2017

Hardware Availability: Jun-2016

Software Availability: Mar-2016

Peak Other Flags

C benchmarks:

403.gcc: -Dalloca=_alloca

The flags files that were used to format this result can be browsed at

<http://www.spec.org/cpu2006/flags/Intel-ic17.0-official-linux64.html>

<http://www.spec.org/cpu2006/flags/Inspur-Platform-Settings-V1.0-HSW.html>

You can also download the XML flags sources by saving the following links:

<http://www.spec.org/cpu2006/flags/Intel-ic17.0-official-linux64.xml>

<http://www.spec.org/cpu2006/flags/Inspur-Platform-Settings-V1.0-HSW.xml>

SPEC and SPECint are registered trademarks of the Standard Performance Evaluation Corporation. All other brand and product names appearing in this result are trademarks or registered trademarks of their respective holders.

For questions about this result, please contact the tester.
For other inquiries, please contact webmaster@spec.org.

Tested with SPEC CPU2006 v1.2.

Report generated on Wed Jan 25 10:54:02 2017 by SPEC CPU2006 PS/PDF formatter v6932.

Originally published on 25 January 2017.