



# SPEC® CINT2006 Result

Copyright 2006-2016 Standard Performance Evaluation Corporation

## Huawei

**SPECint®2006 = 73.5**

Huawei CH220 V3 (Intel Xeon E5-2699 v4)

**SPECint\_base2006 = 71.6**

CPU2006 license: 3175

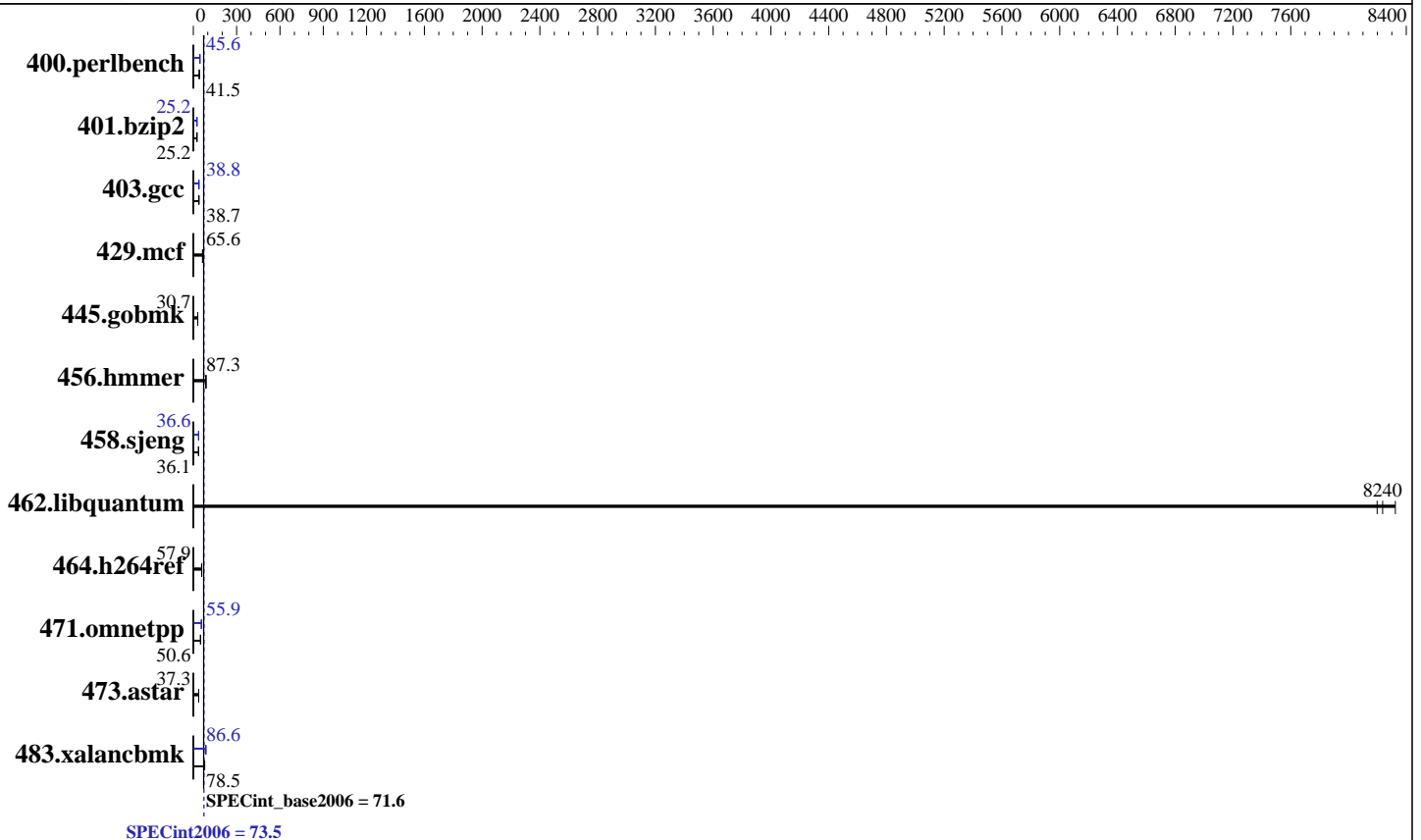
Test date: Nov-2016

Test sponsor: Huawei

Hardware Availability: Apr-2016

Tested by: Huawei

Software Availability: Dec-2015



### Hardware

CPU Name: Intel Xeon E5-2699 v4  
 CPU Characteristics: Intel Turbo Boost Technology up to 3.60 GHz  
 CPU MHz: 2200  
 FPU: Integrated  
 CPU(s) enabled: 44 cores, 2 chips, 22 cores/chip  
 CPU(s) orderable: 1,2 chip  
 Primary Cache: 32 KB I + 32 KB D on chip per core  
 Secondary Cache: 256 KB I+D on chip per core  
 L3 Cache: 55 MB I+D on chip per chip  
 Other Cache: None  
 Memory: 512 GB (16 x 32 GB 2Rx4 PC4-2400T-R)  
 Disk Subsystem: 1 x 1000 GB SATA, 7200 RPM  
 Other Hardware: None

### Software

Operating System: SUSE Linux Enterprise Server 12 SP1 3.12.49-11-default  
 Compiler: C/C++: Version 16.0.0.101 of Intel C++ Studio XE for Linux  
 Auto Parallel: Yes  
 File System: xfs  
 System State: Run level 3 (multi-user)  
 Base Pointers: 32/64-bit  
 Peak Pointers: 32/64-bit  
 Other Software: Microquill SmartHeap V10.2



# SPEC CINT2006 Result

Copyright 2006-2016 Standard Performance Evaluation Corporation

Huawei

SPECint2006 = 73.5

Huawei CH220 V3 (Intel Xeon E5-2699 v4)

SPECint\_base2006 = 71.6

CPU2006 license: 3175  
Test sponsor: Huawei  
Tested by: Huawei

Test date: Nov-2016  
Hardware Availability: Apr-2016  
Software Availability: Dec-2015

## Results Table

Benchmark	Base						Peak					
	Seconds	Ratio	Seconds	Ratio	Seconds	Ratio	Seconds	Ratio	Seconds	Ratio	Seconds	Ratio
400.perlbench	<u>235</u>	<u>41.5</u>	234	41.8	237	41.2	215	45.5	214	45.7	<u>214</u>	<u>45.6</u>
401.bzip2	382	25.2	384	25.1	<u>384</u>	<u>25.2</u>	<u>383</u>	<u>25.2</u>	382	25.2	383	25.2
403.gcc	208	38.7	<u>208</u>	<u>38.7</u>	208	38.6	207	38.9	208	38.8	<u>208</u>	<u>38.8</u>
429.mcf	<u>139</u>	<u>65.6</u>	144	63.2	138	66.2	<u>139</u>	<u>65.6</u>	144	63.2	138	66.2
445.gobmk	341	30.8	<u>341</u>	<u>30.7</u>	341	30.7	341	30.8	<u>341</u>	<u>30.7</u>	341	30.7
456.hammer	106	87.6	<u>107</u>	<u>87.3</u>	107	87.2	106	87.6	<u>107</u>	<u>87.3</u>	107	87.2
458.sjeng	335	36.1	334	36.2	<u>335</u>	<u>36.1</u>	331	36.6	<u>331</u>	<u>36.6</u>	330	36.6
462.libquantum	2.49	8320	2.53	8200	<u>2.52</u>	<u>8240</u>	2.49	8320	2.53	8200	<u>2.52</u>	<u>8240</u>
464.h264ref	<u>382</u>	<u>57.9</u>	381	58.1	383	57.8	<u>382</u>	<u>57.9</u>	381	58.1	383	57.8
471.omnetpp	123	50.7	128	48.7	<u>123</u>	<u>50.6</u>	112	55.8	112	55.9	<u>112</u>	<u>55.9</u>
473.astar	<u>188</u>	<u>37.3</u>	189	37.1	188	37.3	<u>188</u>	<u>37.3</u>	189	37.1	188	37.3
483.xalancbmk	<u>87.9</u>	<u>78.5</u>	87.7	78.7	88.3	78.1	79.8	86.5	<u>79.7</u>	<u>86.6</u>	79.4	86.9

Results appear in the order in which they were run. Bold underlined text indicates a median measurement.

## Submit Notes

The config file option 'submit' was used.

## Operating System Notes

Stack size set to unlimited using "ulimit -s unlimited"

## Platform Notes

```

BIOS configuration:
Set Power Efficiency Mode to Custom
Set Snoop Mode to ES mode
Set Patrol Scrub to Disable
Set Hyper-Threading to Disable
Sysinfo program /spec16/config/sysinfo.rev6914
$Rev: 6914 $ $Date:: 2014-06-25 #$ e3fbb8667b5a285932ceab81e28219e1
running on linux-6392 Tue Nov 8 13:18:00 2016

```

This section contains SUT (System Under Test) info as seen by some common utilities. To remove or add to this section, see: <http://www.spec.org/cpu2006/Docs/config.html#sysinfo>

```

From /proc/cpuinfo
model name : Intel(R) Xeon(R) CPU E5-2699 v4 @ 2.20GHz
2 "physical id"s (chips)
44 "processors"
cores, siblings (Caution: counting these is hw and system dependent. The
following excerpts from /proc/cpuinfo might not be reliable. Use with
Continued on next page

```



# SPEC CINT2006 Result

Copyright 2006-2016 Standard Performance Evaluation Corporation

Huawei

SPECint2006 = 73.5

Huawei CH220 V3 (Intel Xeon E5-2699 v4)

SPECint\_base2006 = 71.6

CPU2006 license: 3175

Test sponsor: Huawei

Tested by: Huawei

Test date: Nov-2016

Hardware Availability: Apr-2016

Software Availability: Dec-2015

## Platform Notes (Continued)

```

caution.)
  cpu cores : 22
  siblings  : 22
  physical 0: cores 0 1 2 3 4 5 8 9 10 11 12 16 17 18 19 20 21 24 25 26 27
                28
  physical 1: cores 0 1 2 3 4 5 8 9 10 11 12 16 17 18 19 20 21 24 25 26 27
                28
  cache size : 56320 KB

```

```

From /proc/meminfo
MemTotal:      528844588 kB
HugePages_Total:      0
Hugepagesize:    2048 kB

```

```

/usr/bin/lsb_release -d
SUSE Linux Enterprise Server 12 SP1

```

```

From /etc/*release* /etc/*version*
SuSE-release:
  SUSE Linux Enterprise Server 12 (x86_64)
  VERSION = 12
  PATCHLEVEL = 1
  # This file is deprecated and will be removed in a future service pack or
  # release.
  # Please check /etc/os-release for details about this release.
os-release:
NAME="SLES"
VERSION="12-SP1"
VERSION_ID="12.1"
PRETTY_NAME="SUSE Linux Enterprise Server 12 SP1"
ID="sles"
ANSI_COLOR="0;32"
CPE_NAME="cpe:/o:suse:sles:12:sp1"

```

```

uname -a:
Linux linux-6392 3.12.49-11-default #1 SMP Wed Nov 11 20:52:43 UTC 2015
(8d714a0) x86_64 x86_64 x86_64 GNU/Linux

```

run-level 3 Nov 8 08:34 last=5

```

SPEC is set to: /spec16
Filesystem      Type  Size  Used Avail Use% Mounted on
/dev/md126p2    xfs   455G   25G  431G   6% /

```

Additional information from dmidecode:

Warning: Use caution when you interpret this section. The 'dmidecode' program reads system data which is "intended to allow hardware to be accurately determined", but the intent may not be met, as there are frequent changes to hardware, firmware, and the "DMTF SMBIOS" standard.

BIOS Insyde Corp. 3.31 08/22/2016

Memory:

Continued on next page



# SPEC CINT2006 Result

Copyright 2006-2016 Standard Performance Evaluation Corporation

Huawei

SPECint2006 = 73.5

Huawei CH220 V3 (Intel Xeon E5-2699 v4)

SPECint\_base2006 = 71.6

CPU2006 license: 3175  
Test sponsor: Huawei  
Tested by: Huawei

Test date: Nov-2016  
Hardware Availability: Apr-2016  
Software Availability: Dec-2015

## Platform Notes (Continued)

16x Micron 36ASF4G72PZ-2G3A1 32 GB 2 rank 2400 MHz

(End of data from sysinfo program)

## General Notes

Environment variables set by runspec before the start of the run:

```
KMP_AFFINITY = "granularity=fine,compact,1,0"
LD_LIBRARY_PATH = "/spec16/libs/32:/spec16/libs/64:/spec16/sh"
OMP_NUM_THREADS = "44"
```

Binaries compiled on a system with 1x Intel Core i5-4670K CPU + 32GB memory using RedHat EL 7.1

Transparent Huge Pages enabled with:

```
echo always > /sys/kernel/mm/transparent_hugepage/enabled
runspec command invoked through numactl i.e.:
numactl --interleave=all runspec <etc>
```

## Base Compiler Invocation

C benchmarks:  
icc -m64

C++ benchmarks:  
icpc -m64

## Base Portability Flags

```
400.perlbench: -DSPEC_CPU_LP64 -DSPEC_CPU_LINUX_X64
401.bzip2: -DSPEC_CPU_LP64
403.gcc: -DSPEC_CPU_LP64
429.mcf: -DSPEC_CPU_LP64
445.gobmk: -DSPEC_CPU_LP64
456.hmmmer: -DSPEC_CPU_LP64
458.sjeng: -DSPEC_CPU_LP64
462.libquantum: -DSPEC_CPU_LP64 -DSPEC_CPU_LINUX
464.h264ref: -DSPEC_CPU_LP64
471.omnetpp: -DSPEC_CPU_LP64
473.astar: -DSPEC_CPU_LP64
483.xalancbmk: -DSPEC_CPU_LP64 -DSPEC_CPU_LINUX
```

## Base Optimization Flags

C benchmarks:  
-xCORE-AVX2 -ipo -O3 -no-prec-div -parallel -opt-prefetch -auto-p32

Continued on next page



# SPEC CINT2006 Result

Copyright 2006-2016 Standard Performance Evaluation Corporation

Huawei

SPECint2006 = 73.5

Huawei CH220 V3 (Intel Xeon E5-2699 v4)

SPECint\_base2006 = 71.6

CPU2006 license: 3175

Test sponsor: Huawei

Tested by: Huawei

Test date: Nov-2016

Hardware Availability: Apr-2016

Software Availability: Dec-2015

## Base Optimization Flags (Continued)

C++ benchmarks:

-xCORE-AVX2 -ipo -O3 -no-prec-div -opt-prefetch -auto-p32  
-Wl,-z,muldefs -L/sh -lsmartheap64

## Base Other Flags

C benchmarks:

403.gcc: -Dalloca=\_alloca

## Peak Compiler Invocation

C benchmarks (except as noted below):

icc -m64

400.perlbench: icc -m32 -L/opt/intel/compilers\_and\_libraries\_2016/linux/compiler/lib/ia32\_lin

C++ benchmarks (except as noted below):

icpc -m32 -L/opt/intel/compilers\_and\_libraries\_2016/linux/compiler/lib/ia32\_lin

473.astar: icpc -m64

## Peak Portability Flags

400.perlbench: -D\_FILE\_OFFSET\_BITS=64 -DSPEC\_CPU\_LINUX\_IA32

401.bzip2: -DSPEC\_CPU\_LP64

403.gcc: -DSPEC\_CPU\_LP64

429.mcf: -DSPEC\_CPU\_LP64

445.gobmk: -DSPEC\_CPU\_LP64

456.hmmmer: -DSPEC\_CPU\_LP64

458.sjeng: -DSPEC\_CPU\_LP64

462.libquantum: -DSPEC\_CPU\_LP64 -DSPEC\_CPU\_LINUX

464.h264ref: -DSPEC\_CPU\_LP64

471.omnetpp: -D\_FILE\_OFFSET\_BITS=64

473.astar: -DSPEC\_CPU\_LP64

483.xalancbmk: -D\_FILE\_OFFSET\_BITS=64 -DSPEC\_CPU\_LINUX

## Peak Optimization Flags

C benchmarks:

Continued on next page

Standard Performance Evaluation Corporation

info@spec.org

http://www.spec.org/



# SPEC CINT2006 Result

Copyright 2006-2016 Standard Performance Evaluation Corporation

Huawei

SPECint2006 = 73.5

Huawei CH220 V3 (Intel Xeon E5-2699 v4)

SPECint\_base2006 = 71.6

CPU2006 license: 3175

Test date: Nov-2016

Test sponsor: Huawei

Hardware Availability: Apr-2016

Tested by: Huawei

Software Availability: Dec-2015

## Peak Optimization Flags (Continued)

400.perlbench: -xCORE-AVX2(pass 2) -prof-gen:threadsafe(pass 1)  
-ipo(pass 2) -O3(pass 2) -no-prec-div(pass 2)  
-par-num-threads=1(pass 1) -prof-use(pass 2) -opt-prefetch  
-ansi-alias

401.bzip2: -xCORE-AVX2(pass 2) -prof-gen:threadsafe(pass 1)  
-ipo(pass 2) -O3(pass 2) -no-prec-div  
-par-num-threads=1(pass 1) -prof-use(pass 2) -auto-ilp32  
-opt-prefetch -ansi-alias

403.gcc: -xCORE-AVX2 -ipo -O3 -no-prec-div -inline-calloc  
-opt-malloc-options=3 -auto-ilp32

429.mcf: basepeak = yes

445.gobmk: basepeak = yes

456.hmmmer: basepeak = yes

458.sjeng: -xCORE-AVX2(pass 2) -prof-gen:threadsafe(pass 1)  
-ipo(pass 2) -O3(pass 2) -no-prec-div(pass 2)  
-par-num-threads=1(pass 1) -prof-use(pass 2) -unroll4

462.libquantum: basepeak = yes

464.h264ref: basepeak = yes

C++ benchmarks:

471.omnetpp: -xCORE-AVX2(pass 2) -prof-gen:threadsafe(pass 1)  
-ipo(pass 2) -O3(pass 2) -no-prec-div(pass 2)  
-par-num-threads=1(pass 1) -prof-use(pass 2)  
-opt-ra-region-strategy=block -ansi-alias  
-Wl,-z,muldefs -L/sh -lsmartheap

473.astar: basepeak = yes

483.xalancbmk: -xCORE-AVX2 -ipo -O3 -no-prec-div -opt-prefetch  
-ansi-alias -Wl,-z,muldefs -L/sh -lsmartheap

## Peak Other Flags

C benchmarks:

403.gcc: -Dalloca=\_alloca



# SPEC CINT2006 Result

Copyright 2006-2016 Standard Performance Evaluation Corporation

Huawei

SPECint2006 = 73.5

Huawei CH220 V3 (Intel Xeon E5-2699 v4)

SPECint\_base2006 = 71.6

CPU2006 license: 3175

Test sponsor: Huawei

Tested by: Huawei

Test date: Nov-2016

Hardware Availability: Apr-2016

Software Availability: Dec-2015

The flags files that were used to format this result can be browsed at

<http://www.spec.org/cpu2006/flags/Intel-ic16.0-official-linux64.html>

<http://www.spec.org/cpu2006/flags/Huawei-Platform-Settings-BDW-V1.0.html>

You can also download the XML flags sources by saving the following links:

<http://www.spec.org/cpu2006/flags/Intel-ic16.0-official-linux64.xml>

<http://www.spec.org/cpu2006/flags/Huawei-Platform-Settings-BDW-V1.0.xml>

SPEC and SPECint are registered trademarks of the Standard Performance Evaluation Corporation. All other brand and product names appearing in this result are trademarks or registered trademarks of their respective holders.

For questions about this result, please contact the tester.  
For other inquiries, please contact [webmaster@spec.org](mailto:webmaster@spec.org).

Tested with SPEC CPU2006 v1.2.  
Report generated on Wed Nov 30 10:46:30 2016 by SPEC CPU2006 PS/PDF formatter v6932.  
Originally published on 29 November 2016.