



SPEC® CINT2006 Result

Copyright 2006-2016 Standard Performance Evaluation Corporation

Hewlett Packard Enterprise

(Test Sponsor: HPE)

Synergy 480 Gen9
(2.20 GHz, Intel Xeon E5-2699 v4)

SPECint®2006 = 73.9

SPECint_base2006 = 71.4

CPU2006 license: 3

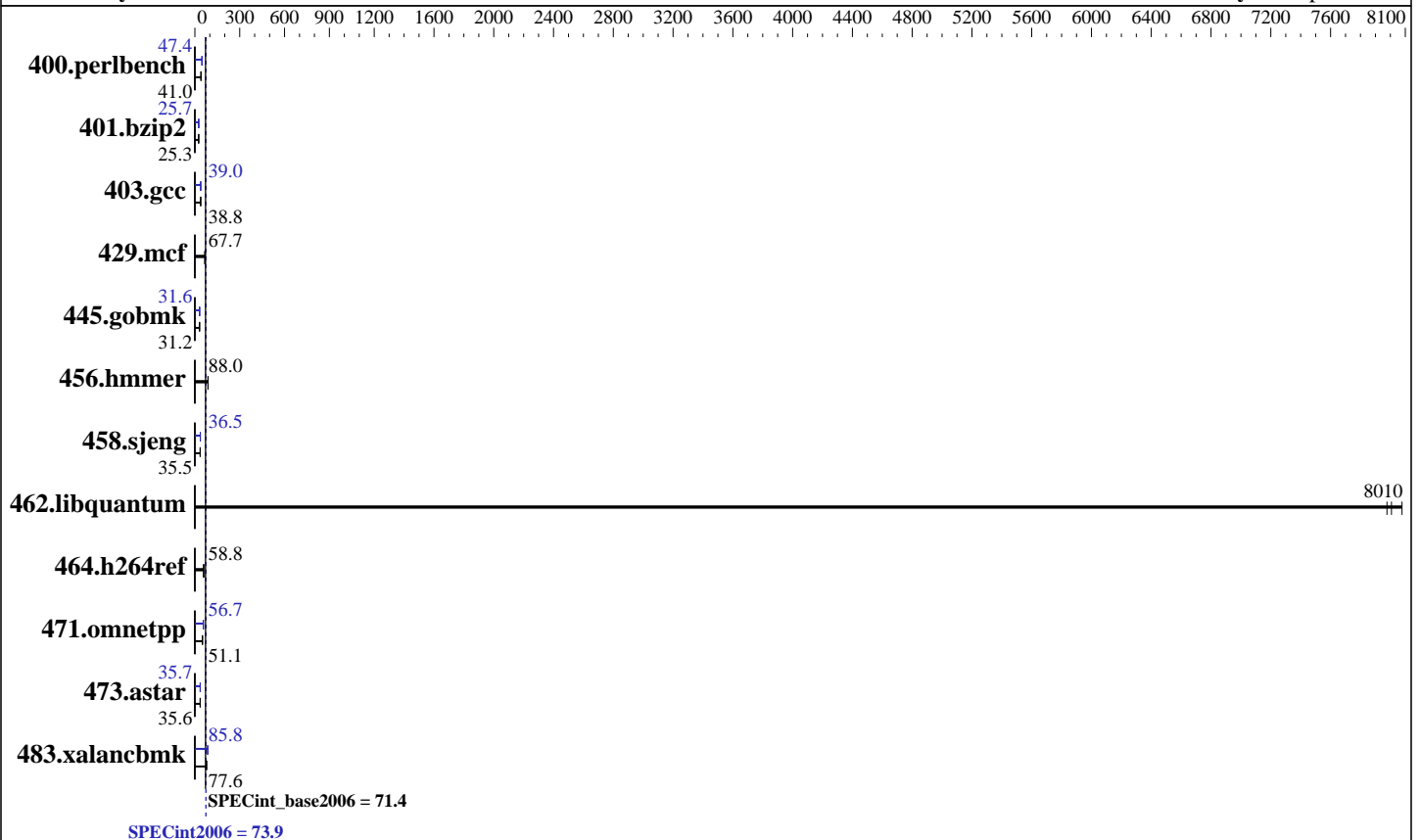
Test sponsor: HPE

Tested by: HPE

Test date: Oct-2016

Hardware Availability: Dec-2016

Software Availability: Sep-2016



Hardware

CPU Name: Intel Xeon E5-2699 v4
 CPU Characteristics: Intel Turbo Boost Technology up to 3.60 GHz
 CPU MHz: 2200
 FPU: Integrated
 CPU(s) enabled: 44 cores, 2 chips, 22 cores/chip
 CPU(s) orderable: 1,2 chip
 Primary Cache: 32 KB I + 32 KB D on chip per core
 Secondary Cache: 256 KB I+D on chip per core
 L3 Cache: 55 MB I+D on chip per chip
 Other Cache: None
 Memory: 256 GB (16 x 16 GB 2Rx4 PC4-2400T-R)
 Disk Subsystem: 1 x 600 GB 10 K SAS, RAID 0
 Other Hardware: None

Software

Operating System: SUSE Linux Enterprise Server 12 (x86_64) SP1, Kernel 3.12.49-11-default
 Compiler: C/C++; Version 17.0.0.098 of Intel C++ Studio XE for Linux
 Auto Parallel: Yes
 File System: xfs
 System State: Run level 3 (multi-user)
 Base Pointers: 32-bit
 Peak Pointers: 32/64-bit
 Other Software: Microquill SmartHeap V10.2



SPEC CINT2006 Result

Copyright 2006-2016 Standard Performance Evaluation Corporation

Hewlett Packard Enterprise

(Test Sponsor: HPE)

Synergy 480 Gen9

(2.20 GHz, Intel Xeon E5-2699 v4)

SPECint2006 = 73.9

SPECint_base2006 = 71.4

CPU2006 license: 3

Test sponsor: HPE

Tested by: HPE

Test date: Oct-2016

Hardware Availability: Dec-2016

Software Availability: Sep-2016

Results Table

Benchmark	Base						Peak					
	Seconds	Ratio	Seconds	Ratio	Seconds	Ratio	Seconds	Ratio	Seconds	Ratio	Seconds	Ratio
400.perlbench	239	40.9	<u>238</u>	<u>41.0</u>	238	41.1	206	47.4	207	47.3	<u>206</u>	<u>47.4</u>
401.bzip2	381	25.3	383	25.2	<u>381</u>	<u>25.3</u>	375	25.7	376	25.7	<u>375</u>	<u>25.7</u>
403.gcc	208	38.7	<u>208</u>	<u>38.8</u>	207	38.8	<u>207</u>	<u>39.0</u>	205	39.2	208	38.8
429.mcf	138	66.3	135	67.8	<u>135</u>	<u>67.7</u>	138	66.3	135	67.8	<u>135</u>	<u>67.7</u>
445.gobmk	336	31.2	337	31.1	<u>337</u>	<u>31.2</u>	<u>331</u>	<u>31.6</u>	331	31.7	332	31.6
456.hammer	<u>106</u>	<u>88.0</u>	106	88.2	106	87.6	<u>106</u>	<u>88.0</u>	106	88.2	106	87.6
458.sjeng	341	35.4	341	35.5	<u>341</u>	<u>35.5</u>	332	36.5	<u>332</u>	<u>36.5</u>	332	36.4
462.libquantum	<u>2.59</u>	<u>8010</u>	2.57	8080	2.60	7980	<u>2.59</u>	<u>8010</u>	2.57	8080	2.60	7980
464.h264ref	376	58.9	377	58.8	<u>376</u>	<u>58.8</u>	376	58.9	377	58.8	<u>376</u>	<u>58.8</u>
471.omnetpp	122	51.2	127	49.3	<u>122</u>	<u>51.1</u>	110	56.6	<u>110</u>	<u>56.7</u>	110	56.7
473.astar	197	35.7	200	35.0	<u>197</u>	<u>35.6</u>	196	35.8	<u>197</u>	<u>35.7</u>	199	35.3
483.xalancbmk	89.0	77.6	<u>88.9</u>	<u>77.6</u>	87.8	78.6	<u>80.4</u>	<u>85.8</u>	80.6	85.6	80.2	86.0

Results appear in the order in which they were run. Bold underlined text indicates a median measurement.

Submit Notes

The config file option 'submit' was used.

Operating System Notes

Stack size set to unlimited using "ulimit -s unlimited"

Transparent Huge Pages enabled with:

```
echo always > /sys/kernel/mm/transparent_hugepage/enabled
```

Platform Notes

BIOS Configuration:

Intel Hyperthreading set to Disabled

Power Profile set to Custom

Power Regulator to Static High Performance Mode

Minimum Processor Idle Power Core C-State set to C6 State

Minimum Processor Idle Power Package C-State set to No Package State

Energy/Performance Bias set to Maximum Performance

Collaborative Power Control set to Disabled

QPI Snoop Configuration set to Home Snoop

Thermal Configuration set to Maximum Cooling

Processor Power and Utilization Monitoring set to Disabled

Memory Refresh Rate set to 1x Refresh

Sysinfo program /home/cpu2006/config/sysinfo.rev6993

Revision 6993 of 2015-11-06 (b5e8d4b4eb51ed28d7f98696cbe290c1)

running on linux-hiyk Fri Oct 28 09:43:03 2016

Continued on next page

Standard Performance Evaluation Corporation

info@spec.org

http://www.spec.org/

Page 2



SPEC CINT2006 Result

Copyright 2006-2016 Standard Performance Evaluation Corporation

Hewlett Packard Enterprise

(Test Sponsor: HPE)

Synergy 480 Gen9
(2.20 GHz, Intel Xeon E5-2699 v4)

SPECint2006 = 73.9

SPECint_base2006 = 71.4

CPU2006 license: 3

Test sponsor: HPE

Tested by: HPE

Test date: Oct-2016

Hardware Availability: Dec-2016

Software Availability: Sep-2016

Platform Notes (Continued)

This section contains SUT (System Under Test) info as seen by some common utilities. To remove or add to this section, see: <http://www.spec.org/cpu2006/Docs/config.html#sysinfo>

```

From /proc/cpuinfo
model name      : Intel(R) Xeon(R) CPU E5-2699 v4 @ 2.20GHz
 2 "physical id"s (chips)
 44 "processors"
cores, siblings (Caution: counting these is hw and system dependent. The
following excerpts from /proc/cpuinfo might not be reliable. Use with
caution.)
  cpu cores    : 22
  siblings     : 22
  physical 0: cores 0 2 3 4 8 10 11 12 16 17 18 19 20 21 24 25 26 27 28
  physical 1: cores 0 2 3 4 8 10 11 12 16 17 18 19 20 21 24 25 26 27 28
cache size     : 56320 KB

```

```

From /proc/meminfo
MemTotal:      264545912 kB
HugePages_Total: 0
Hugepagesize:  2048 kB

```

```

/usr/bin/lsb_release -d
SUSE Linux Enterprise Server 12 SP1

```

```

From /etc/*release* /etc/*version*
SuSE-release:
SUSE Linux Enterprise Server 12 (x86_64)
VERSION = 12
PATCHLEVEL = 1
# This file is deprecated and will be removed in a future service pack or
release.
# Please check /etc/os-release for details about this release.
os-release:
NAME="SLES"
VERSION="12-SP1"
VERSION_ID="12.1"
PRETTY_NAME="SUSE Linux Enterprise Server 12 SP1"
ID="sles"
ANSI_COLOR="0;32"
CPE_NAME="cpe:/o:suse:sles:12:sp1"

```

```

uname -a:
Linux linux-hiyk 3.12.49-11-default #1 SMP Wed Nov 11 20:52:43 UTC 2015
(8d714a0) x86_64 x86_64 x86_64 GNU/Linux

```

run-level 3 Oct 28 09:41

```

SPEC is set to: /home/cpu2006
Filesystem      Type  Size  Used Avail Use% Mounted on
/dev/sda4       xfs   331G  161G  170G   49% /home

```

Additional information from dmidecode:

Continued on next page



SPEC CINT2006 Result

Copyright 2006-2016 Standard Performance Evaluation Corporation

Hewlett Packard Enterprise

(Test Sponsor: HPE)

Synergy 480 Gen9
(2.20 GHz, Intel Xeon E5-2699 v4)

SPECint2006 = 73.9

SPECint_base2006 = 71.4

CPU2006 license: 3

Test sponsor: HPE

Tested by: HPE

Test date: Oct-2016

Hardware Availability: Dec-2016

Software Availability: Sep-2016

Platform Notes (Continued)

Warning: Use caution when you interpret this section. The 'dmidecode' program reads system data which is "intended to allow hardware to be accurately determined", but the intent may not be met, as there are frequent changes to hardware, firmware, and the "DMTF SMBIOS" standard.

BIOS HP I37 09/14/2016

Memory:

8x UNKNOWN NOT AVAILABLE

16x UNKNOWN NOT AVAILABLE 16 GB 2 rank 2400 MHz

(End of data from sysinfo program)

Regarding the sysinfo display about the memory installed, the correct amount of memory is 256 GB and the dmidecode description should have one line reading as:
16x UNKNOWN NOT AVAILABLE 16 GB 2 rank 2400 MHz

General Notes

Environment variables set by runspec before the start of the run:

KMP_AFFINITY = "granularity=fine,scatter"

LD_LIBRARY_PATH = "/home/cpu2006/libs/32:/home/cpu2006/libs/64:/home/cpu2006/sh10.2"

OMP_NUM_THREADS = "44"

Binaries compiled on a system with 1x Intel Core i7-4790 CPU + 32GB RAM
memory using Redhat Enterprise Linux 7.2

Base Compiler Invocation

C benchmarks:

icc -m64

C++ benchmarks:

icpc -m64

Base Portability Flags

400.perlbench: -DSPEC_CPU_LP64 -DSPEC_CPU_LINUX_X64
401.bzip2: -DSPEC_CPU_LP64
403.gcc: -DSPEC_CPU_LP64
429.mcf: -DSPEC_CPU_LP64
445.gobmk: -DSPEC_CPU_LP64
456.hmmer: -DSPEC_CPU_LP64
458.sjeng: -DSPEC_CPU_LP64
462.libquantum: -DSPEC_CPU_LP64 -DSPEC_CPU_LINUX
464.h264ref: -DSPEC_CPU_LP64
471.omnetpp: -DSPEC_CPU_LP64

Continued on next page



SPEC CINT2006 Result

Copyright 2006-2016 Standard Performance Evaluation Corporation

Hewlett Packard Enterprise

(Test Sponsor: HPE)

Synergy 480 Gen9
(2.20 GHz, Intel Xeon E5-2699 v4)

SPECint2006 = 73.9

SPECint_base2006 = 71.4

CPU2006 license: 3

Test sponsor: HPE

Tested by: HPE

Test date: Oct-2016

Hardware Availability: Dec-2016

Software Availability: Sep-2016

Base Portability Flags (Continued)

473.astar: -DSPEC_CPU_LP64
483.xalancbmk: -DSPEC_CPU_LP64 -DSPEC_CPU_LINUX

Base Optimization Flags

C benchmarks:

-xCORE-AVX2 -ipo -O3 -no-prec-div -parallel -qopt-prefetch
-auto-p32

C++ benchmarks:

-xCORE-AVX2 -ipo -O3 -no-prec-div -qopt-prefetch -auto-p32
-Wl,-z,muldefs -L/sh10.2 -lsmartheap64

Base Other Flags

C benchmarks:

403.gcc: -Dalloca=_alloca

Peak Compiler Invocation

C benchmarks (except as noted below):

icc -m64

400.perlbench: icc -m32 -L/opt/intel/compilers_and_libraries_2017/linux/lib/ia32

445.gobmk: icc -m32 -L/opt/intel/compilers_and_libraries_2017/linux/lib/ia32

C++ benchmarks (except as noted below):

icc -m32 -L/opt/intel/compilers_and_libraries_2017/linux/lib/ia32

473.astar: icpc -m64

Peak Portability Flags

400.perlbench: -D_FILE_OFFSET_BITS=64 -DSPEC_CPU_LINUX_IA32

401.bzip2: -DSPEC_CPU_LP64

403.gcc: -DSPEC_CPU_LP64

429.mcf: -DSPEC_CPU_LP64

445.gobmk: -D_FILE_OFFSET_BITS=64

456.hmmer: -DSPEC_CPU_LP64

Continued on next page

Standard Performance Evaluation Corporation

info@spec.org

http://www.spec.org/

Page 5



SPEC CINT2006 Result

Copyright 2006-2016 Standard Performance Evaluation Corporation

Hewlett Packard Enterprise

(Test Sponsor: HPE)

Synergy 480 Gen9

(2.20 GHz, Intel Xeon E5-2699 v4)

SPECint2006 =

73.9

SPECint_base2006 =

71.4

CPU2006 license: 3

Test sponsor: HPE

Tested by: HPE

Test date: Oct-2016

Hardware Availability: Dec-2016

Software Availability: Sep-2016

Peak Portability Flags (Continued)

458.sjeng: -DSPEC_CPU_LP64
 462.libquantum: -DSPEC_CPU_LP64 -DSPEC_CPU_LINUX
 464.h264ref: -DSPEC_CPU_LP64
 471.omnetpp: -D_FILE_OFFSET_BITS=64
 473.astar: -DSPEC_CPU_LP64
 483.xalancbmk: -D_FILE_OFFSET_BITS=64 -DSPEC_CPU_LINUX

Peak Optimization Flags

C benchmarks:

400.perlbench: -prof-gen(pass 1) -prof-use(pass 2) -xCORE-AVX2(pass 2)
 -par-num-threads=1(pass 1) -ipo(pass 2) -O3(pass 2)
 -no-prec-div(pass 2) -qopt-prefetch

401.bzip2: -prof-gen(pass 1) -prof-use(pass 2) -xCORE-AVX2(pass 2)
 -par-num-threads=1(pass 1) -ipo(pass 2) -O3(pass 2)
 -no-prec-div -auto-ilp32 -qopt-prefetch

403.gcc: -xCORE-AVX2 -ipo -O3 -no-prec-div -inline-calloc
 -qopt-malloc-options=3 -auto-ilp32

429.mcf: basepeak = yes

445.gobmk: -prof-gen(pass 1) -prof-use(pass 2) -xCORE-AVX2(pass 2)
 -par-num-threads=1(pass 1) -ipo(pass 2) -O3(pass 2)
 -no-prec-div(pass 2)

456.hmmer: basepeak = yes

458.sjeng: -prof-gen(pass 1) -prof-use(pass 2) -xCORE-AVX2(pass 2)
 -par-num-threads=1(pass 1) -ipo(pass 2) -O3(pass 2)
 -no-prec-div(pass 2) -unroll4

462.libquantum: basepeak = yes

464.h264ref: basepeak = yes

C++ benchmarks:

471.omnetpp: -prof-gen(pass 1) -prof-use(pass 2) -xCORE-AVX2(pass 2)
 -par-num-threads=1(pass 1) -ipo(pass 2) -O3(pass 2)
 -no-prec-div(pass 2) -qopt-ra-region-strategy=block
 -Wl,-z,muldefs -L/sh10.2 -lsmartheap

473.astar: -xCORE-AVX2 -ipo -O3 -no-prec-div -qopt-prefetch
 -auto-p32 -Wl,-z,muldefs -L/sh10.2 -lsmartheap64

Continued on next page



SPEC CINT2006 Result

Copyright 2006-2016 Standard Performance Evaluation Corporation

Hewlett Packard Enterprise

(Test Sponsor: HPE)

Synergy 480 Gen9

(2.20 GHz, Intel Xeon E5-2699 v4)

SPECint2006 =

73.9

SPECint_base2006 =

71.4

CPU2006 license: 3

Test sponsor: HPE

Tested by: HPE

Test date: Oct-2016

Hardware Availability: Dec-2016

Software Availability: Sep-2016

Peak Optimization Flags (Continued)

483.xalanbmk: -xCORE-AVX2 -ipo -O3 -no-prec-div -qopt-prefetch
-Wl,-z,muldefs -L/sh10.2 -lsmartheap

Peak Other Flags

C benchmarks:

403.gcc: -Dalloca=_alloca

The flags files that were used to format this result can be browsed at

<http://www.spec.org/cpu2006/flags/HP-Platform-Flags-Intel-V1.2-HSW-revE.html>

<http://www.spec.org/cpu2006/flags/Intel-ic17.0-official-linux64.html>

You can also download the XML flags sources by saving the following links:

<http://www.spec.org/cpu2006/flags/HP-Platform-Flags-Intel-V1.2-HSW-revE.xml>

<http://www.spec.org/cpu2006/flags/Intel-ic17.0-official-linux64.xml>

SPEC and SPECint are registered trademarks of the Standard Performance Evaluation Corporation. All other brand and product names appearing in this result are trademarks or registered trademarks of their respective holders.

For questions about this result, please contact the tester.
For other inquiries, please contact webmaster@spec.org.

Tested with SPEC CPU2006 v1.2.

Report generated on Tue Nov 15 16:08:34 2016 by SPEC CPU2006 PS/PDF formatter v6932.

Originally published on 15 November 2016.