



# SPEC® CINT2006 Result

Copyright 2006-2016 Standard Performance Evaluation Corporation

## Lenovo Group Limited

**SPECint®2006 = 66.8**

Lenovo System x3850 X6 Essential  
(2.20 GHz, Intel Xeon E7-8860 v4)

**SPECint\_base2006 = 64.9**

CPU2006 license: 9017

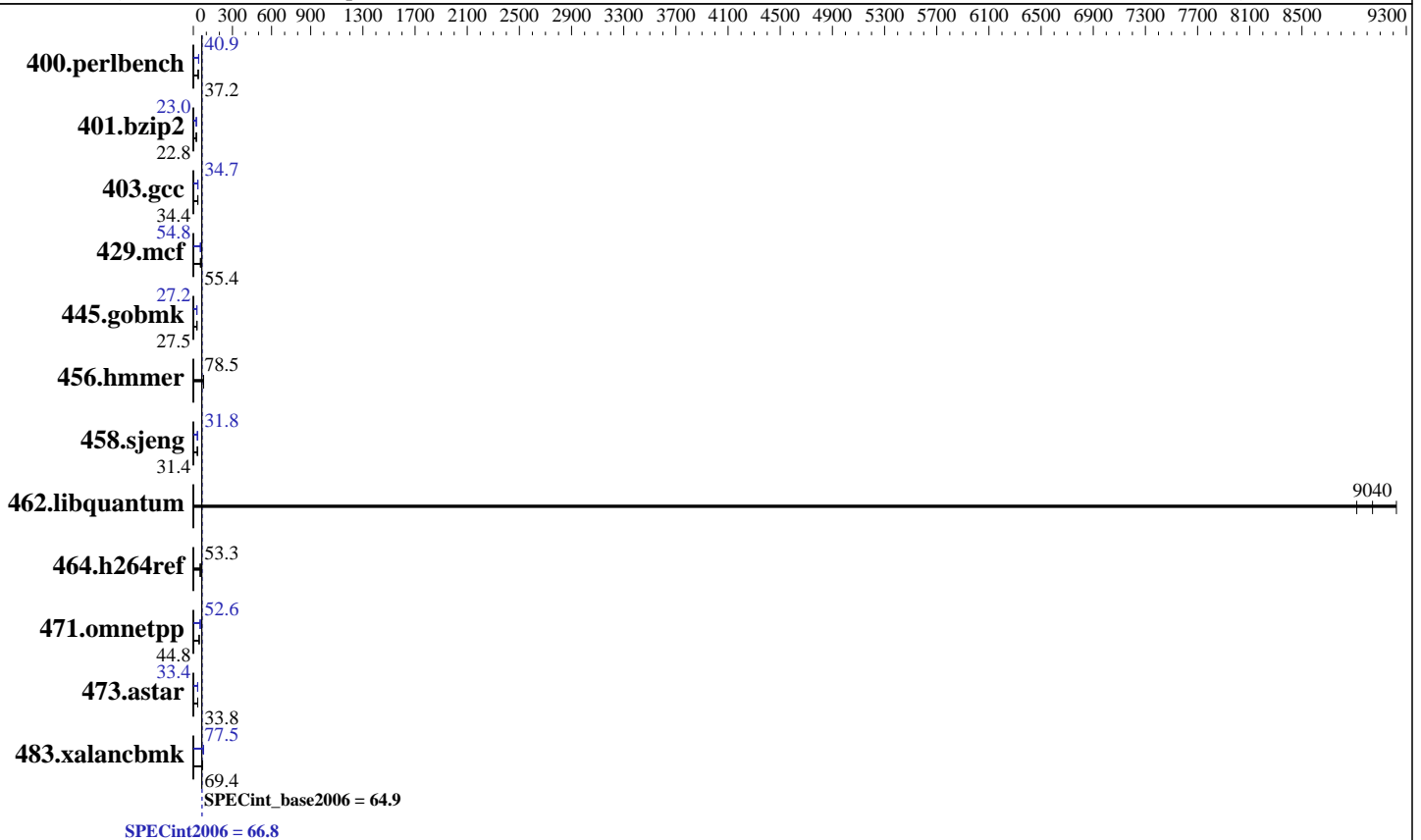
Test date: Aug-2016

Test sponsor: Lenovo Group Limited

Hardware Availability: Jun-2016

Tested by: Lenovo Group Limited

Software Availability: Dec-2015



### Hardware

CPU Name: Intel Xeon E7-8860 v4  
 CPU Characteristics: Intel Turbo Boost Technology up to 3.20 GHz  
 CPU MHz: 2200  
 FPU: Integrated  
 CPU(s) enabled: 72 cores, 4 chips, 18 cores/chip  
 CPU(s) orderable: 2,4 chips  
 Primary Cache: 32 KB I + 32 KB D on chip per core  
 Secondary Cache: 256 KB I+D on chip per core  
 L3 Cache: 45 MB I+D on chip per chip  
 Other Cache: None  
 Memory: 512 GB (16 x 32 GB 2Rx4 PC4-2133P-R, running at 1600 MHz)  
 Disk Subsystem: 1 x 800 GB SATA SSD  
 Other Hardware: None

### Software

Operating System: SUSE Linux Enterprise Server 12 SP1 (x86\_64)  
 Kernel 3.12.49-11-default  
 Compiler: C/C++; Version 16.0.0.101 of Intel C++ Studio XE for Linux  
 Auto Parallel: Yes  
 File System: xfs  
 System State: Run level 3 (multi-user)  
 Base Pointers: 32/64-bit  
 Peak Pointers: 32/64-bit  
 Other Software: Microquill SmartHeap V10.2



# SPEC CINT2006 Result

Copyright 2006-2016 Standard Performance Evaluation Corporation

## Lenovo Group Limited

Lenovo System x3850 X6 Essential  
(2.20 GHz, Intel Xeon E7-8860 v4)

SPECint2006 = **66.8**

SPECint\_base2006 = **64.9**

CPU2006 license: 9017

Test sponsor: Lenovo Group Limited

Tested by: Lenovo Group Limited

Test date: Aug-2016

Hardware Availability: Jun-2016

Software Availability: Dec-2015

## Results Table

Benchmark	Base						Peak					
	Seconds	Ratio	Seconds	Ratio	Seconds	Ratio	Seconds	Ratio	Seconds	Ratio	Seconds	Ratio
400.perlbench	259	37.7	263	37.2	<b><u>263</u></b>	<b><u>37.2</u></b>	<b><u>239</u></b>	<b><u>40.9</u></b>	238	41.0	239	40.9
401.bzip2	<b><u>422</u></b>	<b><u>22.8</u></b>	423	22.8	422	22.9	420	23.0	<b><u>420</u></b>	<b><u>23.0</u></b>	420	23.0
403.gcc	233	34.5	234	34.4	<b><u>234</u></b>	<b><u>34.4</u></b>	233	34.5	<b><u>232</u></b>	<b><u>34.7</u></b>	231	34.9
429.mcf	<b><u>164</u></b>	<b><u>55.4</u></b>	166	54.9	163	55.8	<b><u>167</u></b>	<b><u>54.8</u></b>	166	54.8	167	54.6
445.gobmk	<b><u>381</u></b>	<b><u>27.5</u></b>	381	27.5	381	27.5	<b><u>386</u></b>	<b><u>27.2</u></b>	386	27.2	387	27.1
456.hammer	<b><u>119</u></b>	<b><u>78.5</u></b>	119	78.7	119	78.5	<b><u>119</u></b>	<b><u>78.5</u></b>	119	78.7	119	78.5
458.sjeng	386	31.4	<b><u>386</u></b>	<b><u>31.4</u></b>	385	31.4	<b><u>381</u></b>	<b><u>31.8</u></b>	380	31.8	381	31.8
462.libquantum	2.25	9220	2.32	8920	<b><u>2.29</u></b>	<b><u>9040</u></b>	2.25	9220	2.32	8920	<b><u>2.29</u></b>	<b><u>9040</u></b>
464.h264ref	415	53.3	<b><u>415</u></b>	<b><u>53.3</u></b>	415	53.4	415	53.3	<b><u>415</u></b>	<b><u>53.3</u></b>	415	53.4
471.omnetpp	<b><u>140</u></b>	<b><u>44.8</u></b>	145	43.2	138	45.4	118	52.8	<b><u>119</u></b>	<b><u>52.6</u></b>	119	52.6
473.astar	<b><u>208</u></b>	<b><u>33.8</u></b>	208	33.8	209	33.5	210	33.4	211	33.2	<b><u>210</u></b>	<b><u>33.4</u></b>
483.xalancbmk	<b><u>99.4</u></b>	<b><u>69.4</u></b>	99.9	69.1	99.4	69.4	89.1	77.5	88.9	77.6	<b><u>89.1</u></b>	<b><u>77.5</u></b>

Results appear in the order in which they were run. Bold underlined text indicates a median measurement.

## Submit Notes

The config file option 'submit' was used.

## Operating System Notes

Stack size set to unlimited using "ulimit -s unlimited"

## Platform Notes

BIOS Configuration:

Operating Mode set to "Maximum Performance"

Hyper-Threading set to Disable

Sysinfo program /home/cpu2006-1.2-ic16.0/config/sysinfo.rev6914

\$Rev: 6914 \$ \$Date:: 2014-06-25 #\$ e3fbb8667b5a285932ceab81e28219e1

running on Draco-02 Mon Aug 1 12:10:09 2016

This section contains SUT (System Under Test) info as seen by some common utilities. To remove or add to this section, see:

<http://www.spec.org/cpu2006/Docs/config.html#sysinfo>

From /proc/cpuinfo

model name : Intel(R) Xeon(R) CPU E7-8860 v4 @ 2.20GHz

4 "physical id"s (chips)

72 "processors"

cores, siblings (Caution: counting these is hw and system dependent. The following excerpts from /proc/cpuinfo might not be reliable. Use with caution.)

cpu cores : 18

Continued on next page

Standard Performance Evaluation Corporation

info@spec.org

<http://www.spec.org/>

Page 2



# SPEC CINT2006 Result

Copyright 2006-2016 Standard Performance Evaluation Corporation

## Lenovo Group Limited

SPECint2006 = 66.8

Lenovo System x3850 X6 Essential  
(2.20 GHz, Intel Xeon E7-8860 v4)

SPECint\_base2006 = 64.9

CPU2006 license: 9017

Test date: Aug-2016

Test sponsor: Lenovo Group Limited

Hardware Availability: Jun-2016

Tested by: Lenovo Group Limited

Software Availability: Dec-2015

### Platform Notes (Continued)

```

siblings      : 18
physical 0: cores 0 1 2 3 4 8 9 10 11 16 17 18 19 20 24 25 26 27
physical 1: cores 0 1 2 3 4 8 9 10 11 16 17 18 19 20 24 25 26 27
physical 2: cores 0 1 2 3 4 8 9 10 11 16 17 18 19 20 24 25 26 27
physical 3: cores 0 1 2 3 4 8 9 10 11 16 17 18 19 20 24 25 26 27
cache size   : 46080 KB

```

From /proc/meminfo

```

MemTotal:      529162472 kB
HugePages_Total:      0
Hugepagesize:    2048 kB

```

From /etc/\*release\* /etc/\*version\*

SuSE-release:

```

SUSE Linux Enterprise Server 12 (x86_64)
VERSION = 12
PATCHLEVEL = 1

```

# This file is deprecated and will be removed in a future service pack or release.

# Please check /etc/os-release for details about this release.

os-release:

```

NAME="SLES"
VERSION="12-SP1"
VERSION_ID="12.1"
PRETTY_NAME="SUSE Linux Enterprise Server 12 SP1"
ID="sles"
ANSI_COLOR="0;32"
CPE_NAME="cpe:/o:suse:sles:12:sp1"

```

uname -a:

```

Linux Draco-02 3.12.49-11-default #1 SMP Wed Nov 11 20:52:43 UTC 2015
(8d714a0) x86_64 x86_64 x86_64 GNU/Linux

```

run-level 3 Aug 1 12:08

SPEC is set to: /home/cpu2006-1.2-ic16.0

```

Filesystem      Type  Size  Used Avail Use% Mounted on
/dev/sda4       xfs   688G  5.1G  683G   1% /home

```

Additional information from dmidecode:

Warning: Use caution when you interpret this section. The 'dmidecode' program reads system data which is "intended to allow hardware to be accurately determined", but the intent may not be met, as there are frequent changes to hardware, firmware, and the "DMTF SMBIOS" standard.

BIOS LENOVO -[A9E135CUS-3.10]- 06/16/2016

Memory:

```

16x Hynix HMA84GR7MFR4N-UH 32 GB 2 rank 2400 MHz, configured at 1600 MHz
80x NO DIMM Unknown

```

(End of data from sysinfo program)



# SPEC CINT2006 Result

Copyright 2006-2016 Standard Performance Evaluation Corporation

**Lenovo Group Limited**

**SPECint2006 = 66.8**

Lenovo System x3850 X6 Essential  
(2.20 GHz, Intel Xeon E7-8860 v4)

**SPECint\_base2006 = 64.9**

**CPU2006 license:** 9017

**Test date:** Aug-2016

**Test sponsor:** Lenovo Group Limited

**Hardware Availability:** Jun-2016

**Tested by:** Lenovo Group Limited

**Software Availability:** Dec-2015

## General Notes

Environment variables set by runspec before the start of the run:

KMP\_AFFINITY = "granularity=fine,compact"

LD\_LIBRARY\_PATH = "/home/cpu2006-1.2-ic16.0/libs/32:/home/cpu2006-1.2-ic16.0/libs/64:/home/cpu2006-1.2-ic16.0/sh"

OMP\_NUM\_THREADS = "72"

Binaries compiled on a system with 1x Intel Core i5-4670K CPU + 32GB memory using RedHat EL 7.1

Transparent Huge Pages enabled with:

echo always > /sys/kernel/mm/transparent\_hugepage/enabled

## Base Compiler Invocation

C benchmarks:

icc -m64

C++ benchmarks:

icpc -m64

## Base Portability Flags

400.perlbench: -DSPEC\_CPU\_LP64 -DSPEC\_CPU\_LINUX\_X64

401.bzip2: -DSPEC\_CPU\_LP64

403.gcc: -DSPEC\_CPU\_LP64

429.mcf: -DSPEC\_CPU\_LP64

445.gobmk: -DSPEC\_CPU\_LP64

456.hmmmer: -DSPEC\_CPU\_LP64

458.sjeng: -DSPEC\_CPU\_LP64

462.libquantum: -DSPEC\_CPU\_LP64 -DSPEC\_CPU\_LINUX

464.h264ref: -DSPEC\_CPU\_LP64

471.omnetpp: -DSPEC\_CPU\_LP64

473.astar: -DSPEC\_CPU\_LP64

483.xalancbmk: -DSPEC\_CPU\_LP64 -DSPEC\_CPU\_LINUX

## Base Optimization Flags

C benchmarks:

-xCORE-AVX2 -ipo -O3 -no-prec-div -parallel -opt-prefetch -auto-p32

C++ benchmarks:

-xCORE-AVX2 -ipo -O3 -no-prec-div -opt-prefetch -auto-p32

-Wl,-z,muldefs -L/sh -lsmartheap64



# SPEC CINT2006 Result

Copyright 2006-2016 Standard Performance Evaluation Corporation

Lenovo Group Limited

SPECint2006 = 66.8

Lenovo System x3850 X6 Essential  
(2.20 GHz, Intel Xeon E7-8860 v4)

SPECint\_base2006 = 64.9

CPU2006 license: 9017

Test date: Aug-2016

Test sponsor: Lenovo Group Limited

Hardware Availability: Jun-2016

Tested by: Lenovo Group Limited

Software Availability: Dec-2015

## Base Other Flags

C benchmarks:

403.gcc: -Dalloca=\_alloca

## Peak Compiler Invocation

C benchmarks (except as noted below):

icc -m64

400.perlbench: icc -m32 -L/opt/intel/compilers\_and\_libraries\_2016/linux/compiler/lib/ia32\_lin

445.gobmk: icc -m32 -L/opt/intel/compilers\_and\_libraries\_2016/linux/compiler/lib/ia32\_lin

C++ benchmarks (except as noted below):

icpc -m32 -L/opt/intel/compilers\_and\_libraries\_2016/linux/compiler/lib/ia32\_lin

473.astar: icpc -m64

## Peak Portability Flags

400.perlbench: -D\_FILE\_OFFSET\_BITS=64 -DSPEC\_CPU\_LINUX\_IA32

401.bzip2: -DSPEC\_CPU\_LP64

403.gcc: -DSPEC\_CPU\_LP64

429.mcf: -DSPEC\_CPU\_LP64

445.gobmk: -D\_FILE\_OFFSET\_BITS=64

456.hmmmer: -DSPEC\_CPU\_LP64

458.sjeng: -DSPEC\_CPU\_LP64

462.libquantum: -DSPEC\_CPU\_LP64 -DSPEC\_CPU\_LINUX

464.h264ref: -DSPEC\_CPU\_LP64

471.omnetpp: -D\_FILE\_OFFSET\_BITS=64

473.astar: -DSPEC\_CPU\_LP64

483.xalancbmk: -D\_FILE\_OFFSET\_BITS=64 -DSPEC\_CPU\_LINUX

## Peak Optimization Flags

C benchmarks:

400.perlbench: -xCORE-AVX2(pass 2) -prof-gen:threadsafe(pass 1)  
-ipo(pass 2) -O3(pass 2) -no-prec-div(pass 2)  
-par-num-threads=1(pass 1) -prof-use(pass 2) -opt-prefetch  
-ansi-alias

401.bzip2: -xCORE-AVX2(pass 2) -prof-gen:threadsafe(pass 1)  
-ipo(pass 2) -O3(pass 2) -no-prec-div  
-par-num-threads=1(pass 1) -prof-use(pass 2) -auto-ilp32

Continued on next page



# SPEC CINT2006 Result

Copyright 2006-2016 Standard Performance Evaluation Corporation

Lenovo Group Limited

SPECint2006 = 66.8

Lenovo System x3850 X6 Essential  
(2.20 GHz, Intel Xeon E7-8860 v4)

SPECint\_base2006 = 64.9

CPU2006 license: 9017

Test date: Aug-2016

Test sponsor: Lenovo Group Limited

Hardware Availability: Jun-2016

Tested by: Lenovo Group Limited

Software Availability: Dec-2015

## Peak Optimization Flags (Continued)

401.bzip2 (continued):

-opt-prefetch -ansi-alias

403.gcc: -xCORE-AVX2 -ipo -O3 -no-prec-div -inline-calloc

-opt-malloc-options=3 -auto-ilp32

429.mcf: -xCORE-AVX2 -ipo -O3 -no-prec-div -parallel

-opt-prefetch -auto-p32

445.gobmk: -xCORE-AVX2(pass 2) -prof-gen:threadsafe(pass 1)

-prof-use(pass 2) -par-num-threads=1(pass 1) -ansi-alias

456.hmmcr: basepeak = yes

458.sjeng: -xCORE-AVX2(pass 2) -prof-gen:threadsafe(pass 1)

-ipo(pass 2) -O3(pass 2) -no-prec-div(pass 2)

-par-num-threads=1(pass 1) -prof-use(pass 2) -unroll4

462.libquantum: basepeak = yes

464.h264ref: basepeak = yes

C++ benchmarks:

471.omnetpp: -xCORE-AVX2(pass 2) -prof-gen:threadsafe(pass 1)

-ipo(pass 2) -O3(pass 2) -no-prec-div(pass 2)

-par-num-threads=1(pass 1) -prof-use(pass 2)

-opt-ra-region-strategy=block

-ansi-alias

-Wl,-z,muldefs -L/sh -lsmartheap

473.astar: -xCORE-AVX2 -ipo -O3 -no-prec-div -opt-prefetch

-auto-p32 -Wl,-z,muldefs -L/sh -lsmartheap64

483.xalancbmk: -xCORE-AVX2 -ipo -O3 -no-prec-div -opt-prefetch

-ansi-alias -Wl,-z,muldefs -L/sh -lsmartheap

## Peak Other Flags

C benchmarks:

403.gcc: -Dalloca=\_alloca

The flags files that were used to format this result can be browsed at

<http://www.spec.org/cpu2006/flags/Intel-ic16.0-official-linux64.html>

<http://www.spec.org/cpu2006/flags/Lenovo-Platform-Flags-V1.2-BDW-B.html>



# SPEC CINT2006 Result

Copyright 2006-2016 Standard Performance Evaluation Corporation

## Lenovo Group Limited

Lenovo System x3850 X6 Essential  
(2.20 GHz, Intel Xeon E7-8860 v4)

**SPECint2006 = 66.8**

**SPECint\_base2006 = 64.9**

**CPU2006 license:** 9017

**Test sponsor:** Lenovo Group Limited

**Tested by:** Lenovo Group Limited

**Test date:** Aug-2016

**Hardware Availability:** Jun-2016

**Software Availability:** Dec-2015

You can also download the XML flags sources by saving the following links:

<http://www.spec.org/cpu2006/flags/Intel-ic16.0-official-linux64.xml>

<http://www.spec.org/cpu2006/flags/Lenovo-Platform-Flags-V1.2-BDW-B.xml>

SPEC and SPECint are registered trademarks of the Standard Performance Evaluation Corporation. All other brand and product names appearing in this result are trademarks or registered trademarks of their respective holders.

For questions about this result, please contact the tester.  
For other inquiries, please contact [webmaster@spec.org](mailto:webmaster@spec.org).

Tested with SPEC CPU2006 v1.2.  
Report generated on Tue Sep 6 16:58:02 2016 by SPEC CPU2006 PS/PDF formatter v6932.  
Originally published on 6 September 2016.