



SPEC® CINT2006 Result

Copyright 2006-2016 Standard Performance Evaluation Corporation

Lenovo Group Limited

SPECint®2006 = 42.7

Lenovo System x3850 X6
(Intel Xeon E7-4820 v4, 2.00 GHz)

SPECint_base2006 = 40.8

CPU2006 license: 9017

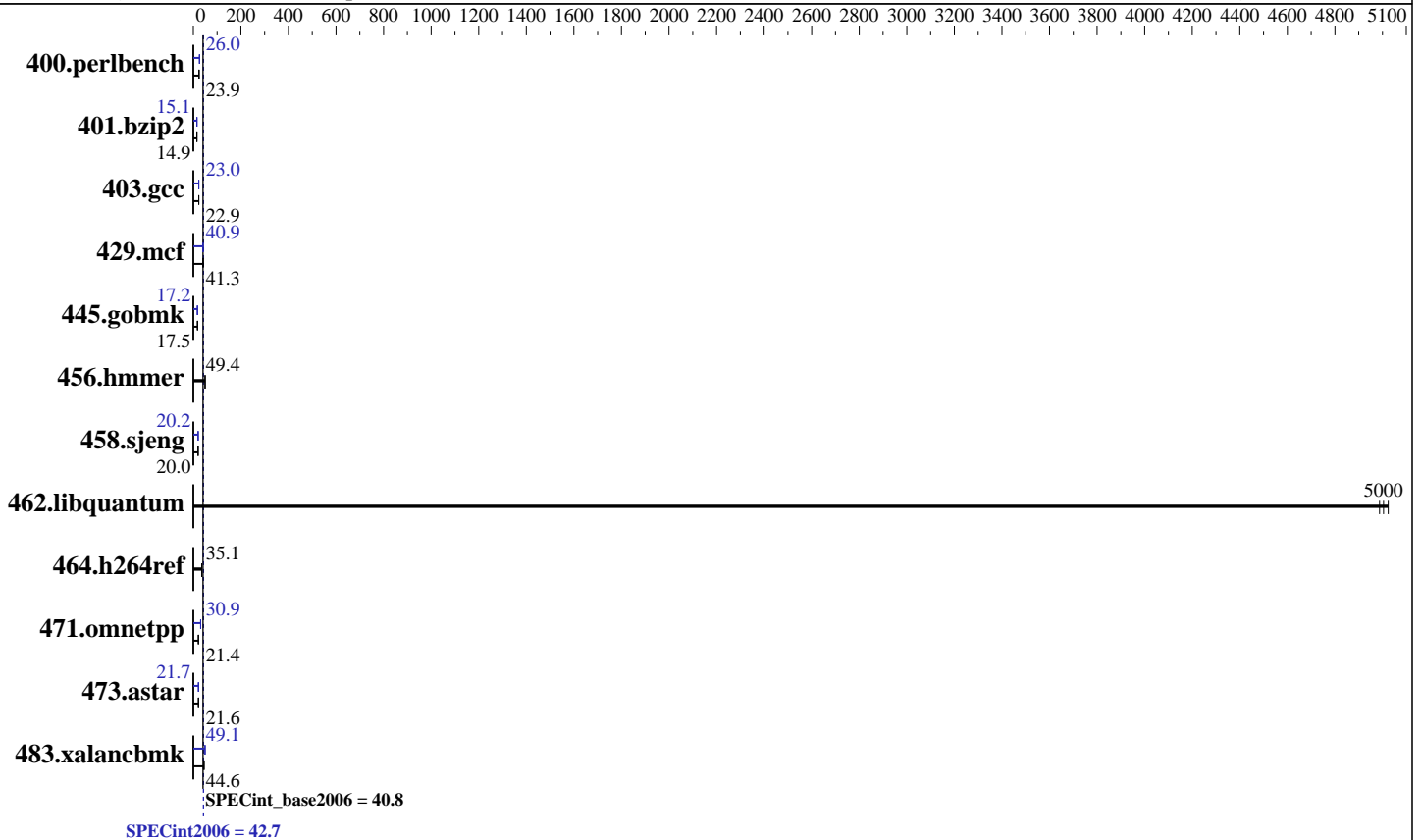
Test date: Jul-2016

Test sponsor: Lenovo Group Limited

Hardware Availability: Jun-2016

Tested by: Lenovo Group Limited

Software Availability: Dec-2015



Hardware

CPU Name: Intel Xeon E7-4820 v4
CPU Characteristics: 2000
CPU MHz: 2000
FPU: Integrated
CPU(s) enabled: 40 cores, 4 chips, 10 cores/chip
CPU(s) orderable: 2,4 chips
Primary Cache: 32 KB I + 32 KB D on chip per core
Secondary Cache: 256 KB I+D on chip per core
L3 Cache: 25 MB I+D on chip per chip
Other Cache: None
Memory: 512 GB (32 x 16 GB 2Rx4 PC4-2133P-R, running at 1333 MHz)
Disk Subsystem: 1 x 800 GB SATA SSD
Other Hardware: None

Software

Operating System: SUSE Linux Enterprise Server 12 SP1 (x86_64)
Kernel 3.12.49-11-default
Compiler: C/C++; Version 16.0.0.101 of Intel C++ Studio XE for Linux
Auto Parallel: Yes
File System: xfs
System State: Run level 3 (multi-user)
Base Pointers: 32/64-bit
Peak Pointers: 32/64-bit
Other Software: Microquill SmartHeap V10.2



SPEC CINT2006 Result

Copyright 2006-2016 Standard Performance Evaluation Corporation

Lenovo Group Limited

Lenovo System x3850 X6
(Intel Xeon E7-4820 v4, 2.00 GHz)

SPECint2006 = **42.7**

SPECint_base2006 = **40.8**

CPU2006 license: 9017

Test sponsor: Lenovo Group Limited

Tested by: Lenovo Group Limited

Test date: Jul-2016

Hardware Availability: Jun-2016

Software Availability: Dec-2015

Results Table

Benchmark	Base						Peak					
	Seconds	Ratio	Seconds	Ratio	Seconds	Ratio	Seconds	Ratio	Seconds	Ratio	Seconds	Ratio
400.perlbench	408	23.9	409	23.9	407	24.0	375	26.0	376	26.0	375	26.0
401.bzip2	648	14.9	647	14.9	642	15.0	640	15.1	640	15.1	640	15.1
403.gcc	350	23.0	351	22.9	351	22.9	349	23.0	350	23.0	351	23.0
429.mcf	220	41.5	221	41.3	223	40.8	223	40.9	222	41.2	225	40.5
445.gobmk	600	17.5	599	17.5	600	17.5	611	17.2	611	17.2	611	17.2
456.hammer	189	49.4	189	49.4	189	49.4	189	49.4	189	49.4	189	49.4
458.sjeng	605	20.0	605	20.0	605	20.0	599	20.2	599	20.2	599	20.2
462.libquantum	4.15	4990	4.12	5020	4.14	5000	4.15	4990	4.12	5020	4.14	5000
464.h264ref	630	35.1	630	35.1	632	35.0	630	35.1	630	35.1	632	35.0
471.omnetpp	290	21.6	295	21.2	292	21.4	201	31.0	205	30.6	202	30.9
473.astar	326	21.5	323	21.8	324	21.6	324	21.7	326	21.6	324	21.7
483.xalancbmk	154	44.8	155	44.5	155	44.6	141	49.1	140	49.2	141	49.1

Results appear in the order in which they were run. Bold underlined text indicates a median measurement.

Submit Notes

The config file option 'submit' was used.

Operating System Notes

Stack size set to unlimited using "ulimit -s unlimited"

Platform Notes

BIOS Configuration:

Operating Mode set to "Maximum Performance"

Hyper-Threading set to Disable

Sysinfo program /home/cpu2006-1.2-ic16.0/config/sysinfo.rev6914

\$Rev: 6914 \$ \$Date:: 2014-06-25 #\$ e3fbb8667b5a285932ceab81e28219e1

running on Draco-01 Mon Jul 25 16:57:48 2016

This section contains SUT (System Under Test) info as seen by some common utilities. To remove or add to this section, see:

<http://www.spec.org/cpu2006/Docs/config.html#sysinfo>

From /proc/cpuinfo

model name : Intel(R) Xeon(R) CPU E7-4820 v4 @ 2.00GHz

4 "physical id"s (chips)

40 "processors"

cores, siblings (Caution: counting these is hw and system dependent. The following excerpts from /proc/cpuinfo might not be reliable. Use with caution.)

cpu cores : 10

Continued on next page

Standard Performance Evaluation Corporation

info@spec.org

<http://www.spec.org/>

Page 2



SPEC CINT2006 Result

Copyright 2006-2016 Standard Performance Evaluation Corporation

Lenovo Group Limited

SPECint2006 = 42.7

Lenovo System x3850 X6
(Intel Xeon E7-4820 v4, 2.00 GHz)

SPECint_base2006 = 40.8

CPU2006 license: 9017

Test date: Jul-2016

Test sponsor: Lenovo Group Limited

Hardware Availability: Jun-2016

Tested by: Lenovo Group Limited

Software Availability: Dec-2015

Platform Notes (Continued)

```

siblings : 10
physical 0: cores 0 1 2 3 4 8 9 10 11 12
physical 1: cores 0 1 2 3 4 8 9 10 11 12
physical 2: cores 0 1 2 3 4 8 9 10 11 12
physical 3: cores 0 1 2 3 4 8 9 10 11 12
cache size : 25600 KB

```

From /proc/meminfo

```

MemTotal:      529165796 kB
HugePages_Total:      0
Hugepagesize:    2048 kB

```

From /etc/*release* /etc/*version*

SuSE-release:

```

SUSE Linux Enterprise Server 12 (x86_64)
VERSION = 12
PATCHLEVEL = 1

```

This file is deprecated and will be removed in a future service pack or release.

Please check /etc/os-release for details about this release.

os-release:

```

NAME="SLES"
VERSION="12-SP1"
VERSION_ID="12.1"
PRETTY_NAME="SUSE Linux Enterprise Server 12 SP1"
ID="sles"
ANSI_COLOR="0;32"
CPE_NAME="cpe:/o:suse:sles:12:sp1"

```

uname -a:

```

Linux Draco-01 3.12.49-11-default #1 SMP Wed Nov 11 20:52:43 UTC 2015
(8d714a0) x86_64 x86_64 x86_64 GNU/Linux

```

run-level 3 Jul 25 16:52

SPEC is set to: /home/cpu2006-1.2-ic16.0

```

Filesystem      Type  Size  Used Avail Use% Mounted on
/dev/sda4       xfs   688G  4.5G  684G   1% /home

```

Additional information from dmidecode:

Warning: Use caution when you interpret this section. The 'dmidecode' program reads system data which is "intended to allow hardware to be accurately determined", but the intent may not be met, as there are frequent changes to hardware, firmware, and the "DMTF SMBIOS" standard.

BIOS LENOVO -[A9E135CUS-3.10]- 06/16/2016

Memory:

```

32x Hynix HMA42GR7AFR4N-UH 16 GB 2 rank 2400 MHz, configured at 1333 MHz
64x NO DIMM Unknown

```

(End of data from sysinfo program)



SPEC CINT2006 Result

Copyright 2006-2016 Standard Performance Evaluation Corporation

Lenovo Group Limited

SPECint2006 = 42.7

Lenovo System x3850 X6
(Intel Xeon E7-4820 v4, 2.00 GHz)

SPECint_base2006 = 40.8

CPU2006 license: 9017

Test date: Jul-2016

Test sponsor: Lenovo Group Limited

Hardware Availability: Jun-2016

Tested by: Lenovo Group Limited

Software Availability: Dec-2015

General Notes

Environment variables set by runspec before the start of the run:

KMP_AFFINITY = "granularity=fine,compact"

LD_LIBRARY_PATH = "/home/cpu2006-1.2-ic16.0/libs/32:/home/cpu2006-1.2-ic16.0/libs/64:/home/cpu2006-1.2-ic16.0/sh"

OMP_NUM_THREADS = "40"

Binaries compiled on a system with 1x Intel Core i5-4670K CPU + 32GB memory using RedHat EL 7.1

Transparent Huge Pages enabled with:

echo always > /sys/kernel/mm/transparent_hugepage/enabled

Base Compiler Invocation

C benchmarks:

icc -m64

C++ benchmarks:

icpc -m64

Base Portability Flags

400.perlbench: -DSPEC_CPU_LP64 -DSPEC_CPU_LINUX_X64

401.bzip2: -DSPEC_CPU_LP64

403.gcc: -DSPEC_CPU_LP64

429.mcf: -DSPEC_CPU_LP64

445.gobmk: -DSPEC_CPU_LP64

456.hmmer: -DSPEC_CPU_LP64

458.sjeng: -DSPEC_CPU_LP64

462.libquantum: -DSPEC_CPU_LP64 -DSPEC_CPU_LINUX

464.h264ref: -DSPEC_CPU_LP64

471.omnetpp: -DSPEC_CPU_LP64

473.astar: -DSPEC_CPU_LP64

483.xalancbmk: -DSPEC_CPU_LP64 -DSPEC_CPU_LINUX

Base Optimization Flags

C benchmarks:

-xCORE-AVX2 -ipo -O3 -no-prec-div -parallel -opt-prefetch -auto-p32

C++ benchmarks:

-xCORE-AVX2 -ipo -O3 -no-prec-div -opt-prefetch -auto-p32

-Wl,-z,muldefs -L/sh -lsmartheap64



SPEC CINT2006 Result

Copyright 2006-2016 Standard Performance Evaluation Corporation

Lenovo Group Limited

SPECint2006 = 42.7

Lenovo System x3850 X6
(Intel Xeon E7-4820 v4, 2.00 GHz)

SPECint_base2006 = 40.8

CPU2006 license: 9017

Test date: Jul-2016

Test sponsor: Lenovo Group Limited

Hardware Availability: Jun-2016

Tested by: Lenovo Group Limited

Software Availability: Dec-2015

Base Other Flags

C benchmarks:

403.gcc: -Dalloca=_alloca

Peak Compiler Invocation

C benchmarks (except as noted below):

icc -m64

400.perlbench: icc -m32 -L/opt/intel/compilers_and_libraries_2016/linux/compiler/lib/ia32_lin

445.gobmk: icc -m32 -L/opt/intel/compilers_and_libraries_2016/linux/compiler/lib/ia32_lin

C++ benchmarks (except as noted below):

icpc -m32 -L/opt/intel/compilers_and_libraries_2016/linux/compiler/lib/ia32_lin

473.astar: icpc -m64

Peak Portability Flags

400.perlbench: -D_FILE_OFFSET_BITS=64 -DSPEC_CPU_LINUX_IA32

401.bzip2: -DSPEC_CPU_LP64

403.gcc: -DSPEC_CPU_LP64

429.mcf: -DSPEC_CPU_LP64

445.gobmk: -D_FILE_OFFSET_BITS=64

456.hmmmer: -DSPEC_CPU_LP64

458.sjeng: -DSPEC_CPU_LP64

462.libquantum: -DSPEC_CPU_LP64 -DSPEC_CPU_LINUX

464.h264ref: -DSPEC_CPU_LP64

471.omnetpp: -D_FILE_OFFSET_BITS=64

473.astar: -DSPEC_CPU_LP64

483.xalancbmk: -D_FILE_OFFSET_BITS=64 -DSPEC_CPU_LINUX

Peak Optimization Flags

C benchmarks:

400.perlbench: -xCORE-AVX2(pass 2) -prof-gen:threadsafe(pass 1)
-ipo(pass 2) -O3(pass 2) -no-prec-div(pass 2)
-par-num-threads=1(pass 1) -prof-use(pass 2) -opt-prefetch
-ansi-alias

401.bzip2: -xCORE-AVX2(pass 2) -prof-gen:threadsafe(pass 1)
-ipo(pass 2) -O3(pass 2) -no-prec-div
-par-num-threads=1(pass 1) -prof-use(pass 2) -auto-ilp32

Continued on next page



SPEC CINT2006 Result

Copyright 2006-2016 Standard Performance Evaluation Corporation

Lenovo Group Limited

SPECint2006 = 42.7

Lenovo System x3850 X6
(Intel Xeon E7-4820 v4, 2.00 GHz)

SPECint_base2006 = 40.8

CPU2006 license: 9017

Test date: Jul-2016

Test sponsor: Lenovo Group Limited

Hardware Availability: Jun-2016

Tested by: Lenovo Group Limited

Software Availability: Dec-2015

Peak Optimization Flags (Continued)

401.bzip2 (continued):

`-opt-prefetch -ansi-alias`

403.gcc: `-xCORE-AVX2 -ipo -O3 -no-prec-div -inline-calloc`

`-opt-malloc-options=3 -auto-ilp32`

429.mcf: `-xCORE-AVX2 -ipo -O3 -no-prec-div -parallel`

`-opt-prefetch -auto-p32`

445.gobmk: `-xCORE-AVX2(pass 2) -prof-gen:threadsafe(pass 1)`

`-prof-use(pass 2) -par-num-threads=1(pass 1) -ansi-alias`

456.hmmr: `basepeak = yes`

458.sjeng: `-xCORE-AVX2(pass 2) -prof-gen:threadsafe(pass 1)`

`-ipo(pass 2) -O3(pass 2) -no-prec-div(pass 2)`

`-par-num-threads=1(pass 1) -prof-use(pass 2) -unroll4`

462.libquantum: `basepeak = yes`

464.h264ref: `basepeak = yes`

C++ benchmarks:

471.omnetpp: `-xCORE-AVX2(pass 2) -prof-gen:threadsafe(pass 1)`

`-ipo(pass 2) -O3(pass 2) -no-prec-div(pass 2)`

`-par-num-threads=1(pass 1) -prof-use(pass 2)`

`-opt-ra-region-strategy=block`

`-ansi-alias`

`-Wl,-z,muldefs -L/sh -lsmartheap`

473.astar: `-xCORE-AVX2 -ipo -O3 -no-prec-div -opt-prefetch`

`-auto-p32 -Wl,-z,muldefs -L/sh -lsmartheap64`

483.xalancbmk: `-xCORE-AVX2 -ipo -O3 -no-prec-div -opt-prefetch`

`-ansi-alias -Wl,-z,muldefs -L/sh -lsmartheap`

Peak Other Flags

C benchmarks:

403.gcc: `-Dalloca=_alloca`

The flags files that were used to format this result can be browsed at

<http://www.spec.org/cpu2006/flags/Intel-ic16.0-official-linux64.html>

<http://www.spec.org/cpu2006/flags/Lenovo-Platform-Flags-V1.2-BDW-B.html>



SPEC CINT2006 Result

Copyright 2006-2016 Standard Performance Evaluation Corporation

Lenovo Group Limited

Lenovo System x3850 X6
(Intel Xeon E7-4820 v4, 2.00 GHz)

SPECint2006 = 42.7

SPECint_base2006 = 40.8

CPU2006 license: 9017

Test sponsor: Lenovo Group Limited

Tested by: Lenovo Group Limited

Test date: Jul-2016

Hardware Availability: Jun-2016

Software Availability: Dec-2015

You can also download the XML flags sources by saving the following links:

<http://www.spec.org/cpu2006/flags/Intel-ic16.0-official-linux64.xml>

<http://www.spec.org/cpu2006/flags/Lenovo-Platform-Flags-V1.2-BDW-B.xml>

SPEC and SPECint are registered trademarks of the Standard Performance Evaluation Corporation. All other brand and product names appearing in this result are trademarks or registered trademarks of their respective holders.

For questions about this result, please contact the tester.
For other inquiries, please contact webmaster@spec.org.

Tested with SPEC CPU2006 v1.2.
Report generated on Wed Aug 24 13:14:35 2016 by SPEC CPU2006 PS/PDF formatter v6932.
Originally published on 23 August 2016.