



SPEC[®] CINT2006 Result

Copyright 2006-2016 Standard Performance Evaluation Corporation

NEC Corporation

SPECint[®]2006 = 53.5

Express5800/R120g-1E (Intel Xeon E5-2650L v4)

SPECint_base2006 = 51.6

CPU2006 license: 9006

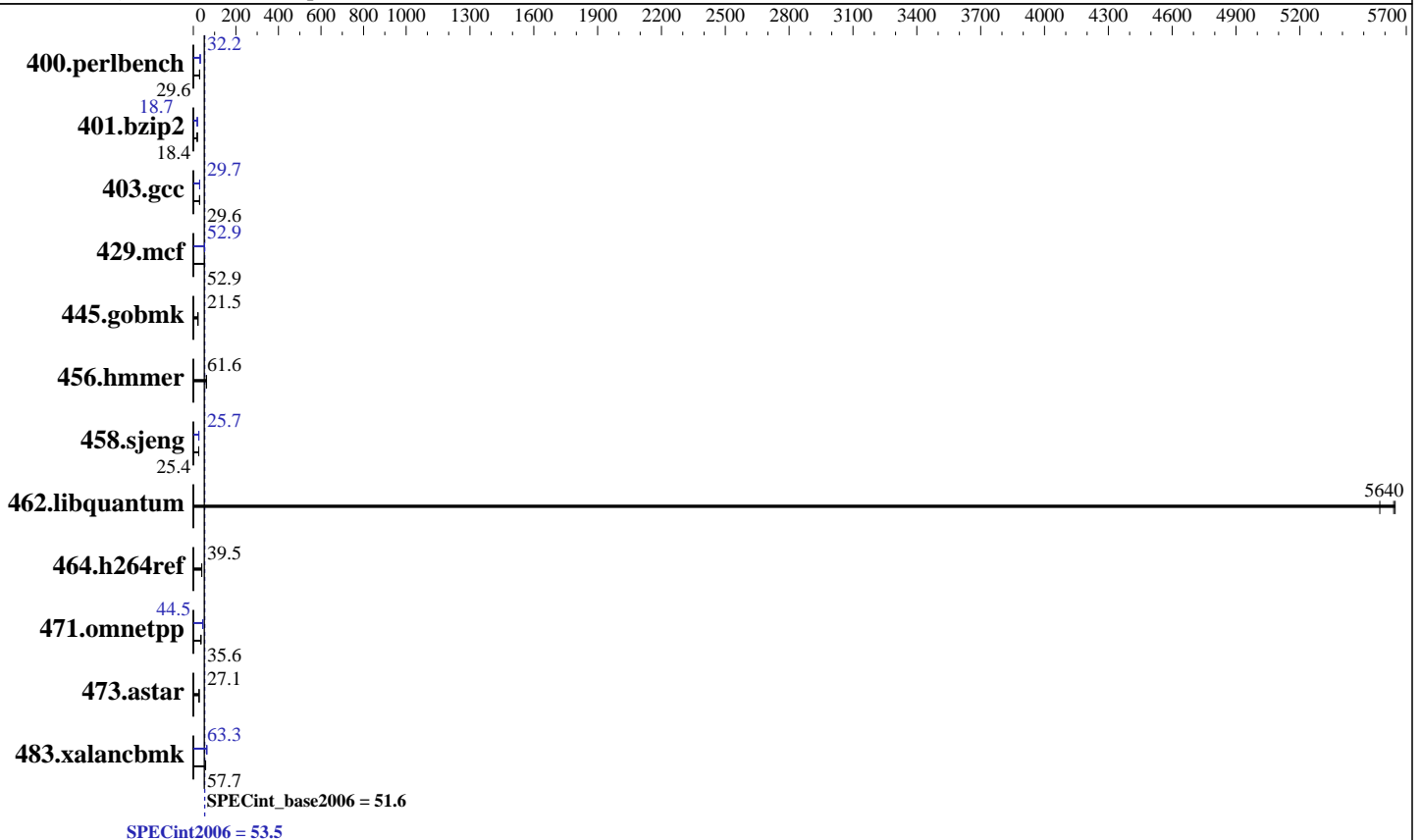
Test date: Jun-2016

Test sponsor: NEC Corporation

Hardware Availability: Jun-2016

Tested by: NEC Corporation

Software Availability: Jan-2016



Hardware

CPU Name: Intel Xeon E5-2650L v4
 CPU Characteristics: Intel Turbo Boost Technology up to 2.50 GHz
 CPU MHz: 1700
 FPU: Integrated
 CPU(s) enabled: 28 cores, 2 chips, 14 cores/chip
 CPU(s) orderable: 1,2 chips
 Primary Cache: 32 KB I + 32 KB D on chip per core
 Secondary Cache: 256 KB I+D on chip per core
 L3 Cache: 35 MB I+D on chip per chip
 Other Cache: None
 Memory: 256 GB (16 x 16 GB 2Rx4 PC4-2400T-R)
 Disk Subsystem: 1 x 1 TB SATA, 7200 RPM
 Other Hardware: None

Software

Operating System: Red Hat Enterprise Linux Server release 7.2 (Maipo)
 Kernel 3.10.0-327.4.5.el7.x86_64
 Compiler: C/C++: Version 16.0.0.101 of Intel C++ Studio XE for Linux
 Auto Parallel: Yes
 File System: ext4
 System State: Run level 3 (multi-user)
 Base Pointers: 32/64-bit
 Peak Pointers: 32/64-bit
 Other Software: Microquill SmartHeap V10.2



SPEC CINT2006 Result

Copyright 2006-2016 Standard Performance Evaluation Corporation

NEC Corporation

SPECint2006 = **53.5**

Express5800/R120g-1E (Intel Xeon E5-2650L v4)

SPECint_base2006 = **51.6**

CPU2006 license: 9006

Test date: Jun-2016

Test sponsor: NEC Corporation

Hardware Availability: Jun-2016

Tested by: NEC Corporation

Software Availability: Jan-2016

Results Table

Benchmark	Base						Peak					
	Seconds	Ratio	Seconds	Ratio	Seconds	Ratio	Seconds	Ratio	Seconds	Ratio	Seconds	Ratio
400.perlbench	330	29.6	330	29.6	330	29.6	303	32.2	303	32.2	303	32.2
401.bzip2	526	18.4	526	18.3	522	18.5	515	18.7	515	18.7	515	18.7
403.gcc	272	29.6	272	29.6	272	29.5	271	29.7	271	29.7	270	29.8
429.mcf	171	53.2	172	52.9	173	52.7	172	52.9	172	53.1	172	52.9
445.gobmk	487	21.5	487	21.5	487	21.5	487	21.5	487	21.5	487	21.5
456.hammer	151	61.6	151	61.8	152	61.5	151	61.6	151	61.8	152	61.5
458.sjeng	476	25.4	476	25.4	476	25.4	470	25.7	470	25.7	470	25.7
462.libquantum	3.72	5580	3.67	5640	3.67	5650	3.72	5580	3.67	5640	3.67	5650
464.h264ref	560	39.5	561	39.4	561	39.5	560	39.5	561	39.4	561	39.5
471.omnetpp	174	35.9	177	35.3	176	35.6	141	44.5	140	44.5	141	44.5
473.astar	259	27.1	259	27.1	260	27.0	259	27.1	259	27.1	260	27.0
483.xalancbmk	119	57.9	120	57.7	121	57.1	109	63.3	109	63.3	109	63.2

Results appear in the order in which they were run. Bold underlined text indicates a median measurement.

Submit Notes

The config file option 'submit' was used.

Operating System Notes

Stack size set to unlimited using "ulimit -s unlimited"

Platform Notes

BIOS Settings:
 Power Management Policy: Custom
 Energy Performance: Performance
 Patrol Scrub: Disabled
 Snoop Mode: Home Snoop with Directory
 Hyper-Threading: Disabled

General Notes

Environment variables set by runspec before the start of the run:
 KMP_AFFINITY = "granularity=fine,compact"
 LD_LIBRARY_PATH = "/home/cpu2006/libs/32:/home/cpu2006/libs/64:/home/cpu2006/sh"
 OMP_NUM_THREADS = "28"

Binaries compiled on a system with 1x Intel Core i5-4670K CPU + 32GB memory using RedHat EL 7.1
 Transparent Huge Pages enabled with:
 echo always > /sys/kernel/mm/transparent_hugepage/enabled



SPEC CINT2006 Result

Copyright 2006-2016 Standard Performance Evaluation Corporation

NEC Corporation

SPECint2006 = 53.5

Express5800/R120g-1E (Intel Xeon E5-2650L v4)

SPECint_base2006 = 51.6

CPU2006 license: 9006

Test date: Jun-2016

Test sponsor: NEC Corporation

Hardware Availability: Jun-2016

Tested by: NEC Corporation

Software Availability: Jan-2016

Base Compiler Invocation

C benchmarks:

icc -m64

C++ benchmarks:

icpc -m64

Base Portability Flags

400.perlbench: -DSPEC_CPU_LP64 -DSPEC_CPU_LINUX_X64
 401.bzip2: -DSPEC_CPU_LP64
 403.gcc: -DSPEC_CPU_LP64
 429.mcf: -DSPEC_CPU_LP64
 445.gobmk: -DSPEC_CPU_LP64
 456.hmmer: -DSPEC_CPU_LP64
 458.sjeng: -DSPEC_CPU_LP64
 462.libquantum: -DSPEC_CPU_LP64 -DSPEC_CPU_LINUX
 464.h264ref: -DSPEC_CPU_LP64
 471.omnetpp: -DSPEC_CPU_LP64
 473.astar: -DSPEC_CPU_LP64
 483.xalancbmk: -DSPEC_CPU_LP64 -DSPEC_CPU_LINUX

Base Optimization Flags

C benchmarks:

-xCORE-AVX2 -ipo -O3 -no-prec-div -parallel -opt-prefetch -auto-p32

C++ benchmarks:

-xCORE-AVX2 -ipo -O3 -no-prec-div -opt-prefetch -auto-p32
-Wl,-z,muldefs -L/sh -lsmarthheap64

Base Other Flags

C benchmarks:

403.gcc: -Dalloca=_alloca

Peak Compiler Invocation

C benchmarks (except as noted below):

icc -m64

Continued on next page



SPEC CINT2006 Result

Copyright 2006-2016 Standard Performance Evaluation Corporation

NEC Corporation

SPECint2006 = 53.5

Express5800/R120g-1E (Intel Xeon E5-2650L v4)

SPECint_base2006 = 51.6

CPU2006 license: 9006

Test date: Jun-2016

Test sponsor: NEC Corporation

Hardware Availability: Jun-2016

Tested by: NEC Corporation

Software Availability: Jan-2016

Peak Compiler Invocation (Continued)

400.perlbench: `icc -m32 -L/opt/intel/compilers_and_libraries_2016/linux/compiler/lib/ia32_lin`

C++ benchmarks (except as noted below):

`icpc -m32 -L/opt/intel/compilers_and_libraries_2016/linux/compiler/lib/ia32_lin`

473.astar: `icpc -m64`

Peak Portability Flags

400.perlbench: `-D_FILE_OFFSET_BITS=64 -DSPEC_CPU_LINUX_IA32`
 401.bzip2: `-DSPEC_CPU_LP64`
 403.gcc: `-DSPEC_CPU_LP64`
 429.mcf: `-DSPEC_CPU_LP64`
 445.gobmk: `-DSPEC_CPU_LP64`
 456.hmmmer: `-DSPEC_CPU_LP64`
 458.sjeng: `-DSPEC_CPU_LP64`
 462.libquantum: `-DSPEC_CPU_LP64 -DSPEC_CPU_LINUX`
 464.h264ref: `-DSPEC_CPU_LP64`
 471.omnetpp: `-D_FILE_OFFSET_BITS=64`
 473.astar: `-DSPEC_CPU_LP64`
 483.xalanbmk: `-D_FILE_OFFSET_BITS=64 -DSPEC_CPU_LINUX`

Peak Optimization Flags

C benchmarks:

400.perlbench: `-xCORE-AVX2(pass 2) -prof-gen:threadsafe(pass 1) -ipo(pass 2) -O3(pass 2) -no-prec-div(pass 2) -par-num-threads=1(pass 1) -prof-use(pass 2) -opt-prefetch -ansi-alias`

401.bzip2: `-xCORE-AVX2(pass 2) -prof-gen:threadsafe(pass 1) -ipo(pass 2) -O3(pass 2) -no-prec-div -par-num-threads=1(pass 1) -prof-use(pass 2) -auto-ilp32 -opt-prefetch -ansi-alias`

403.gcc: `-xCORE-AVX2 -ipo -O3 -no-prec-div -inline-calloc -opt-malloc-options=3 -auto-ilp32`

429.mcf: `-xCORE-AVX2 -ipo -O3 -no-prec-div -parallel -opt-prefetch -auto-p32`

445.gobmk: `basepeak = yes`

456.hmmmer: `basepeak = yes`

Continued on next page



SPEC CINT2006 Result

Copyright 2006-2016 Standard Performance Evaluation Corporation

NEC Corporation

SPECint2006 = 53.5

Express5800/R120g-1E (Intel Xeon E5-2650L v4)

SPECint_base2006 = 51.6

CPU2006 license: 9006

Test date: Jun-2016

Test sponsor: NEC Corporation

Hardware Availability: Jun-2016

Tested by: NEC Corporation

Software Availability: Jan-2016

Peak Optimization Flags (Continued)

458.sjeng: -xCORE-AVX2(pass 2) -prof-gen:threadsafe(pass 1)
-ipo(pass 2) -O3(pass 2) -no-prec-div(pass 2)
-par-num-threads=1(pass 1) -prof-use(pass 2) -unroll4

462.libquantum: basepeak = yes

464.h264ref: basepeak = yes

C++ benchmarks:

471.omnetpp: -xCORE-AVX2(pass 2) -prof-gen:threadsafe(pass 1)
-ipo(pass 2) -O3(pass 2) -no-prec-div(pass 2)
-par-num-threads=1(pass 1) -prof-use(pass 2)
-opt-ra-region-strategy=block -ansi-alias
-Wl,-z,muldefs -L/sh -lsmartheap

473.astar: basepeak = yes

483.xalancbmk: -xCORE-AVX2 -ipo -O3 -no-prec-div -opt-prefetch
-ansi-alias -Wl,-z,muldefs -L/sh -lsmartheap

Peak Other Flags

C benchmarks:

403.gcc: -Dalloca=_alloca

The flags files that were used to format this result can be browsed at

<http://www.spec.org/cpu2006/flags/Intel-ic16.0-official-linux64.html>

<http://www.spec.org/cpu2006/flags/NEC-Platform-Settings-V1.2-120g-RevC.html>

You can also download the XML flags sources by saving the following links:

<http://www.spec.org/cpu2006/flags/Intel-ic16.0-official-linux64.xml>

<http://www.spec.org/cpu2006/flags/NEC-Platform-Settings-V1.2-120g-RevC.xml>

SPEC and SPECint are registered trademarks of the Standard Performance Evaluation Corporation. All other brand and product names appearing in this result are trademarks or registered trademarks of their respective holders.

For questions about this result, please contact the tester.
For other inquiries, please contact webmaster@spec.org.

Tested with SPEC CPU2006 v1.2.

Report generated on Tue Jun 28 17:29:16 2016 by SPEC CPU2006 PS/PDF formatter v6932.

Originally published on 28 June 2016.