



# SPEC® CINT2006 Result

Copyright 2006-2016 Standard Performance Evaluation Corporation

## Fujitsu

PRIMERGY RX2560 M2, Intel Xeon E5-2697A v4, 2.60 GHz

**SPECint®2006 = 73.1**

**SPECint\_base2006 = 70.9**

CPU2006 license: 19

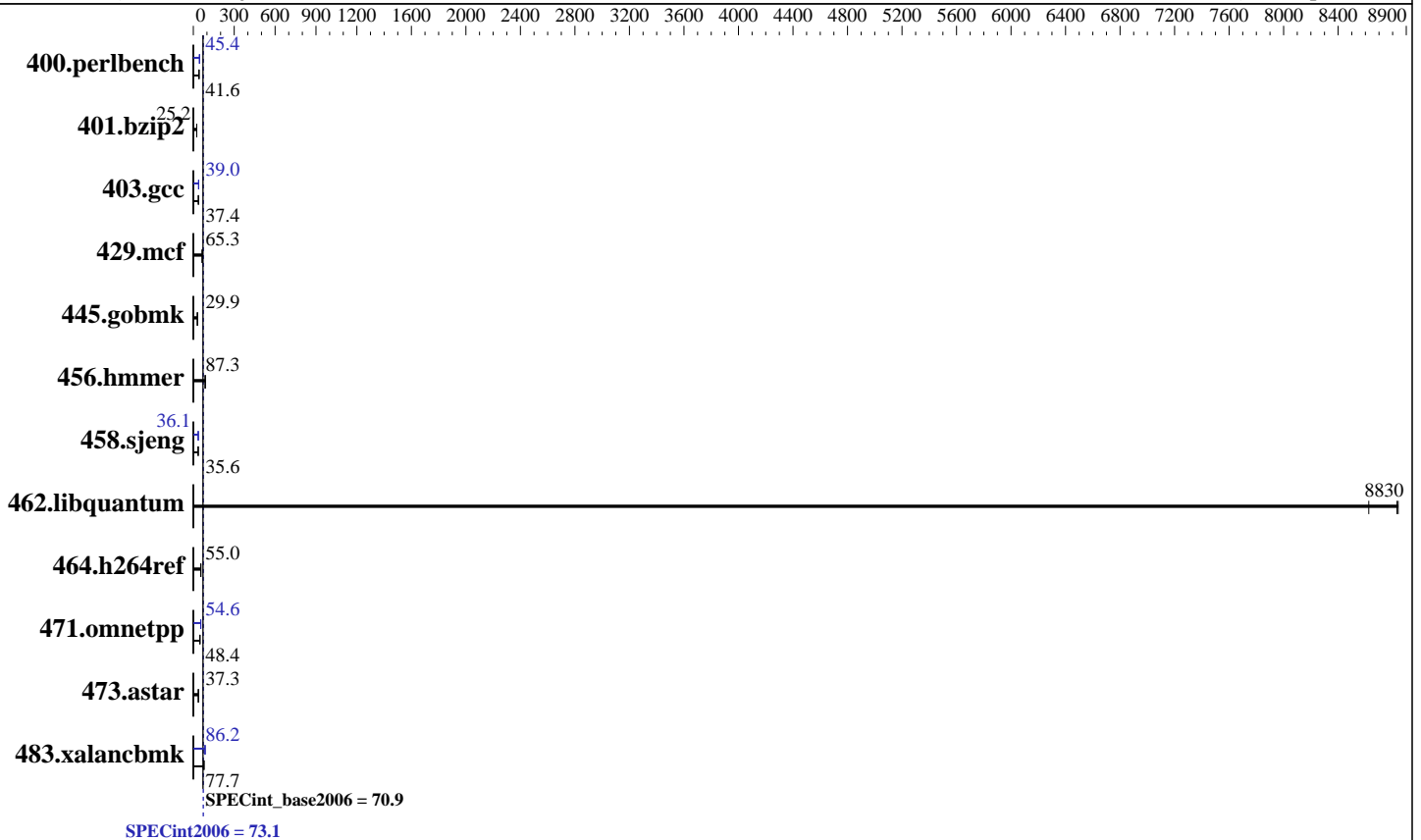
Test sponsor: Fujitsu

Tested by: Fujitsu

Test date: Apr-2016

Hardware Availability: Apr-2016

Software Availability: Sep-2015



### Hardware

CPU Name: Intel Xeon E5-2697A v4  
 CPU Characteristics: Intel Turbo Boost Technology up to 3.60 GHz  
 CPU MHz: 2600  
 FPU: Integrated  
 CPU(s) enabled: 32 cores, 2 chips, 16 cores/chip, 2 threads/core  
 CPU(s) orderable: 1,2 chip  
 Primary Cache: 32 KB I + 32 KB D on chip per core  
 Secondary Cache: 256 KB I+D on chip per core  
 L3 Cache: 40 MB I+D on chip per chip  
 Other Cache: None  
 Memory: 256 GB (16 x 16 GB 2Rx4 PC4-2400T-R)  
 Disk Subsystem: 1 x SATA, 500 GB, 7200 RPM  
 Other Hardware: None

### Software

Operating System: SUSE Linux Enterprise Server 12 SP1 (x86\_64)  
 Kernel 3.12.49-11-default  
 Compiler: C/C++; Version 16.0.0.101 of Intel C++ Studio XE for Linux  
 Auto Parallel: Yes  
 File System: xfs  
 System State: Run level 5 (multi-user)  
 Base Pointers: 32/64-bit  
 Peak Pointers: 32/64-bit  
 Other Software: Microquill SmartHeap V10.2



# SPEC CINT2006 Result

Copyright 2006-2016 Standard Performance Evaluation Corporation

## Fujitsu

PRIMERGY RX2560 M2, Intel Xeon E5-2697A v4, 2.60 GHz

SPECint2006 = **73.1**

SPECint\_base2006 = **70.9**

CPU2006 license: 19  
Test sponsor: Fujitsu  
Tested by: Fujitsu

Test date: Apr-2016  
Hardware Availability: Apr-2016  
Software Availability: Sep-2015

## Results Table

Benchmark	Base						Peak					
	Seconds	Ratio	Seconds	Ratio	Seconds	Ratio	Seconds	Ratio	Seconds	Ratio	Seconds	Ratio
400.perlbench	<b><u>235</u></b>	<b><u>41.6</u></b>	235	41.6	233	41.9	<b><u>215</u></b>	<b><u>45.4</u></b>	214	45.6	216	45.2
401.bzip2	381	25.3	385	25.1	<b><u>383</u></b>	<b><u>25.2</u></b>	381	25.3	385	25.1	<b><u>383</u></b>	<b><u>25.2</u></b>
403.gcc	215	37.4	<b><u>215</u></b>	<b><u>37.4</u></b>	216	37.3	207	38.8	206	39.0	<b><u>207</u></b>	<b><u>39.0</u></b>
429.mcf	138	65.9	140	65.2	<b><u>140</u></b>	<b><u>65.3</u></b>	138	65.9	140	65.2	<b><u>140</u></b>	<b><u>65.3</u></b>
445.gobmk	350	30.0	<b><u>350</u></b>	<b><u>29.9</u></b>	351	29.9	350	30.0	<b><u>350</u></b>	<b><u>29.9</u></b>	351	29.9
456.hammer	107	87.5	<b><u>107</u></b>	<b><u>87.3</u></b>	107	87.2	107	87.5	<b><u>107</u></b>	<b><u>87.3</u></b>	107	87.2
458.sjeng	339	35.7	<b><u>340</u></b>	<b><u>35.6</u></b>	340	35.6	335	36.1	335	36.1	<b><u>335</u></b>	<b><u>36.1</u></b>
462.libquantum	2.40	8620	2.34	8840	<b><u>2.35</u></b>	<b><u>8830</u></b>	2.40	8620	2.34	8840	<b><u>2.35</u></b>	<b><u>8830</u></b>
464.h264ref	403	55.0	404	54.8	<b><u>403</u></b>	<b><u>55.0</u></b>	403	55.0	404	54.8	<b><u>403</u></b>	<b><u>55.0</u></b>
471.omnetpp	130	48.2	129	48.4	<b><u>129</u></b>	<b><u>48.4</u></b>	114	54.6	<b><u>115</u></b>	<b><u>54.6</u></b>	115	54.5
473.astar	<b><u>188</u></b>	<b><u>37.3</u></b>	192	36.7	188	37.3	<b><u>188</u></b>	<b><u>37.3</u></b>	192	36.7	188	37.3
483.xalancbmk	<b><u>88.8</u></b>	<b><u>77.7</u></b>	88.9	77.6	88.3	78.1	80.4	85.8	<b><u>80.0</u></b>	<b><u>86.2</u></b>	79.9	86.3

Results appear in the order in which they were run. Bold underlined text indicates a median measurement.

## Submit Notes

The config file option 'submit' was used.

## Operating System Notes

Stack size set to unlimited using "ulimit -s unlimited"

## Platform Notes

```

BIOS configuration:
Energy Performance = Performance
Utilization Profile = Unbalanced
QPI snoop mode: Home Directory Snoop with OSB
    COD Enable = Disabled, Early Snoop = Disabled, Home Snoop Dir OSB = Enabled
CPU ClE Support = Disabled
Sysinfo program /home/SPECcpu2006/config/sysinfo.rev6914
$Rev: 6914 $ $Date:: 2014-06-25 #$ e3fbb8667b5a285932ceab81e28219e1
running on RX2560M2 Thu Apr 28 07:46:38 2016

```

This section contains SUT (System Under Test) info as seen by some common utilities. To remove or add to this section, see: <http://www.spec.org/cpu2006/Docs/config.html#sysinfo>

```

From /proc/cpuinfo
model name : Intel(R) Xeon(R) CPU E5-2697A v4 @ 2.60GHz
2 "physical id"s (chips)
64 "processors"
cores, siblings (Caution: counting these is hw and system dependent. The
Continued on next page

```



# SPEC CINT2006 Result

Copyright 2006-2016 Standard Performance Evaluation Corporation

## Fujitsu

PRIMERGY RX2560 M2, Intel Xeon E5-2697A v4, 2.60 GHz

SPECint2006 = 73.1

SPECint\_base2006 = 70.9

CPU2006 license: 19  
Test sponsor: Fujitsu  
Tested by: Fujitsu

Test date: Apr-2016  
Hardware Availability: Apr-2016  
Software Availability: Sep-2015

### Platform Notes (Continued)

following excerpts from /proc/cpuinfo might not be reliable. Use with caution.)

```
cpu cores : 16
siblings  : 32
physical 0: cores 0 1 2 3 4 5 6 7 8 9 10 11 12 13 14 15
physical 1: cores 0 1 2 3 4 5 6 7 8 9 10 11 12 13 14 15
cache size : 40960 KB
```

```
From /proc/meminfo
MemTotal:      264314460 kB
HugePages_Total:      0
Hugepagesize:    2048 kB
```

```
/usr/bin/lsb_release -d
SUSE Linux Enterprise Server 12 SP1
```

```
From /etc/*release* /etc/*version*
SuSE-release:
SUSE Linux Enterprise Server 12 (x86_64)
VERSION = 12
PATCHLEVEL = 1
# This file is deprecated and will be removed in a future service pack or
release.
# Please check /etc/os-release for details about this release.
os-release:
NAME="SLES"
VERSION="12-SP1"
VERSION_ID="12.1"
PRETTY_NAME="SUSE Linux Enterprise Server 12 SP1"
ID="sles"
ANSI_COLOR="0;32"
CPE_NAME="cpe:/o:suse:sles:12:sp1"
```

```
uname -a:
Linux RX2560M2 3.12.49-11-default #1 SMP Wed Nov 11 20:52:43 UTC 2015
(8d714a0) x86_64 x86_64 x86_64 GNU/Linux
```

```
run-level 5 Apr 28 07:45
```

```
SPEC is set to: /home/SPECcpu2006
Filesystem      Type  Size  Used Avail Use% Mounted on
/dev/sda3       xfs   1.8T  116G  1.7T   7% /home
```

Additional information from dmidecode:

Warning: Use caution when you interpret this section. The 'dmidecode' program reads system data which is "intended to allow hardware to be accurately determined", but the intent may not be met, as there are frequent changes to hardware, firmware, and the "DMTF SMBIOS" standard.

BIOS FUJITSU // American Megatrends Inc. V5.0.0.11 R1.6.0 for D3289-B1x  
03/11/2016

Memory:

Continued on next page



# SPEC CINT2006 Result

Copyright 2006-2016 Standard Performance Evaluation Corporation

**Fujitsu**

PRIMERGY RX2560 M2, Intel Xeon E5-2697A v4, 2.60 GHz

**SPECint2006 = 73.1**

**SPECint\_base2006 = 70.9**

**CPU2006 license:** 19  
**Test sponsor:** Fujitsu  
**Tested by:** Fujitsu

**Test date:** Apr-2016  
**Hardware Availability:** Apr-2016  
**Software Availability:** Sep-2015

## Platform Notes (Continued)

16x Hynix Semiconductor HMA42GR7AFR4N-UH 16 GB 2 rank 2400 MHz  
8x NO DIMM NO DIMM

(End of data from sysinfo program)

## General Notes

Environment variables set by runspec before the start of the run:

```
KMP_AFFINITY = "granularity=fine,scatter"  
LD_LIBRARY_PATH = "/home/SPECcpu2006/libs/32:/home/SPECcpu2006/libs/64:/home/SPECcpu2006/sh"  
OMP_NUM_THREADS = "32"
```

Binaries compiled on a system with 1x Intel Core i5-4670K CPU + 32GB memory using RedHat EL 7.1

Transparent Huge Pages enabled with:

```
echo always > /sys/kernel/mm/transparent_hugepage/enabled
```

For information about Fujitsu please visit: <http://www.fujitsu.com>

## Base Compiler Invocation

C benchmarks:  
icc -m64

C++ benchmarks:  
icpc -m64

## Base Portability Flags

```
400.perlbench: -DSPEC_CPU_LP64 -DSPEC_CPU_LINUX_X64  
401.bzip2: -DSPEC_CPU_LP64  
403.gcc: -DSPEC_CPU_LP64  
429.mcf: -DSPEC_CPU_LP64  
445.gobmk: -DSPEC_CPU_LP64  
456.hmmmer: -DSPEC_CPU_LP64  
458.sjeng: -DSPEC_CPU_LP64  
462.libquantum: -DSPEC_CPU_LP64 -DSPEC_CPU_LINUX  
464.h264ref: -DSPEC_CPU_LP64  
471.omnetpp: -DSPEC_CPU_LP64  
473.astar: -DSPEC_CPU_LP64  
483.xalancbmk: -DSPEC_CPU_LP64 -DSPEC_CPU_LINUX
```

## Base Optimization Flags

C benchmarks:  
-xCORE-AVX2 -ipo -O3 -no-prec-div -parallel -opt-prefetch -auto-p32

Continued on next page



# SPEC CINT2006 Result

Copyright 2006-2016 Standard Performance Evaluation Corporation

**Fujitsu**

PRIMERGY RX2560 M2, Intel Xeon E5-2697A v4, 2.60 GHz

**SPECint2006 = 73.1**

**SPECint\_base2006 = 70.9**

CPU2006 license: 19  
Test sponsor: Fujitsu  
Tested by: Fujitsu

Test date: Apr-2016  
Hardware Availability: Apr-2016  
Software Availability: Sep-2015

## Base Optimization Flags (Continued)

C++ benchmarks:

-xCORE-AVX2 -ipo -O3 -no-prec-div -opt-prefetch -auto-p32  
-Wl,-z,muldefs -L/sh -lsmartheap64

## Base Other Flags

C benchmarks:

403.gcc: -Dalloca=\_alloca

## Peak Compiler Invocation

C benchmarks (except as noted below):

icc -m64

400.perlbench: icc -m32 -L/opt/intel/compilers\_and\_libraries\_2016/linux/compiler/lib/ia32\_lin

C++ benchmarks (except as noted below):

icpc -m32 -L/opt/intel/compilers\_and\_libraries\_2016/linux/compiler/lib/ia32\_lin

473.astar: icpc -m64

## Peak Portability Flags

400.perlbench: -D\_FILE\_OFFSET\_BITS=64 -DSPEC\_CPU\_LINUX\_IA32  
401.bzip2: -DSPEC\_CPU\_LP64  
403.gcc: -DSPEC\_CPU\_LP64  
429.mcf: -DSPEC\_CPU\_LP64  
445.gobmk: -DSPEC\_CPU\_LP64  
456.hmmmer: -DSPEC\_CPU\_LP64  
458.sjeng: -DSPEC\_CPU\_LP64  
462.libquantum: -DSPEC\_CPU\_LP64 -DSPEC\_CPU\_LINUX  
464.h264ref: -DSPEC\_CPU\_LP64  
471.omnetpp: -D\_FILE\_OFFSET\_BITS=64  
473.astar: -DSPEC\_CPU\_LP64  
483.xalancbmk: -D\_FILE\_OFFSET\_BITS=64 -DSPEC\_CPU\_LINUX

## Peak Optimization Flags

C benchmarks:

Continued on next page



# SPEC CINT2006 Result

Copyright 2006-2016 Standard Performance Evaluation Corporation

**Fujitsu**

PRIMERGY RX2560 M2, Intel Xeon E5-2697A v4, 2.60 GHz

**SPECint2006 = 73.1**

**SPECint\_base2006 = 70.9**

**CPU2006 license:** 19

**Test sponsor:** Fujitsu

**Tested by:** Fujitsu

**Test date:** Apr-2016

**Hardware Availability:** Apr-2016

**Software Availability:** Sep-2015

## Peak Optimization Flags (Continued)

400.perlbench: -xCORE-AVX2(pass 2) -prof-gen:threadsafe(pass 1)  
-ipo(pass 2) -O3(pass 2) -no-prec-div(pass 2)  
-par-num-threads=1(pass 1) -prof-use(pass 2) -opt-prefetch  
-ansi-alias

401.bzip2: basepeak = yes

403.gcc: -xCORE-AVX2 -ipo -O3 -no-prec-div -inline-alloc  
-opt-malloc-options=3 -auto-ilp32

429.mcf: basepeak = yes

445.gobmk: basepeak = yes

456.hmmer: basepeak = yes

458.sjeng: -xCORE-AVX2(pass 2) -prof-gen:threadsafe(pass 1)  
-ipo(pass 2) -O3(pass 2) -no-prec-div(pass 2)  
-par-num-threads=1(pass 1) -prof-use(pass 2) -unroll4

462.libquantum: basepeak = yes

464.h264ref: basepeak = yes

C++ benchmarks:

471.omnetpp: -xCORE-AVX2(pass 2) -prof-gen:threadsafe(pass 1)  
-ipo(pass 2) -O3(pass 2) -no-prec-div(pass 2)  
-par-num-threads=1(pass 1) -prof-use(pass 2)  
-opt-ra-region-strategy=block -ansi-alias  
-Wl,-z,muldefs -L/sh -lsmarheap

473.astar: basepeak = yes

483.xalancbmk: -xCORE-AVX2 -ipo -O3 -no-prec-div -opt-prefetch  
-ansi-alias -Wl,-z,muldefs -L/sh -lsmarheap

## Peak Other Flags

C benchmarks:

403.gcc: -Dalloca=\_alloca

The flags files that were used to format this result can be browsed at

<http://www.spec.org/cpu2006/flags/Intel-ic16.0-official-linux64.html>

<http://www.spec.org/cpu2006/flags/Fujitsu-Platform-Settings-V1.2-HSW-RevA.html>



# SPEC CINT2006 Result

Copyright 2006-2016 Standard Performance Evaluation Corporation

## Fujitsu

PRIMERGY RX2560 M2, Intel Xeon E5-2697A v4, 2.60 GHz

**SPECint2006 = 73.1**

**SPECint\_base2006 = 70.9**

**CPU2006 license:** 19

**Test sponsor:** Fujitsu

**Tested by:** Fujitsu

**Test date:** Apr-2016

**Hardware Availability:** Apr-2016

**Software Availability:** Sep-2015

You can also download the XML flags sources by saving the following links:

<http://www.spec.org/cpu2006/flags/Intel-ic16.0-official-linux64.xml>

<http://www.spec.org/cpu2006/flags/Fujitsu-Platform-Settings-V1.2-HSW-RevA.xml>

SPEC and SPECint are registered trademarks of the Standard Performance Evaluation Corporation. All other brand and product names appearing in this result are trademarks or registered trademarks of their respective holders.

For questions about this result, please contact the tester.  
For other inquiries, please contact [webmaster@spec.org](mailto:webmaster@spec.org).

Tested with SPEC CPU2006 v1.2.  
Report generated on Wed Jun 1 19:10:05 2016 by SPEC CPU2006 PS/PDF formatter v6932.  
Originally published on 1 June 2016.