



SPEC® CINT2006 Result

Copyright 2006-2016 Standard Performance Evaluation Corporation

Dell Inc.

SPECint®2006 = 72.1

PowerEdge R730 (Intel Xeon E5-2697A v4, 2.60 GHz)

SPECint_base2006 = 69.2

CPU2006 license: 55

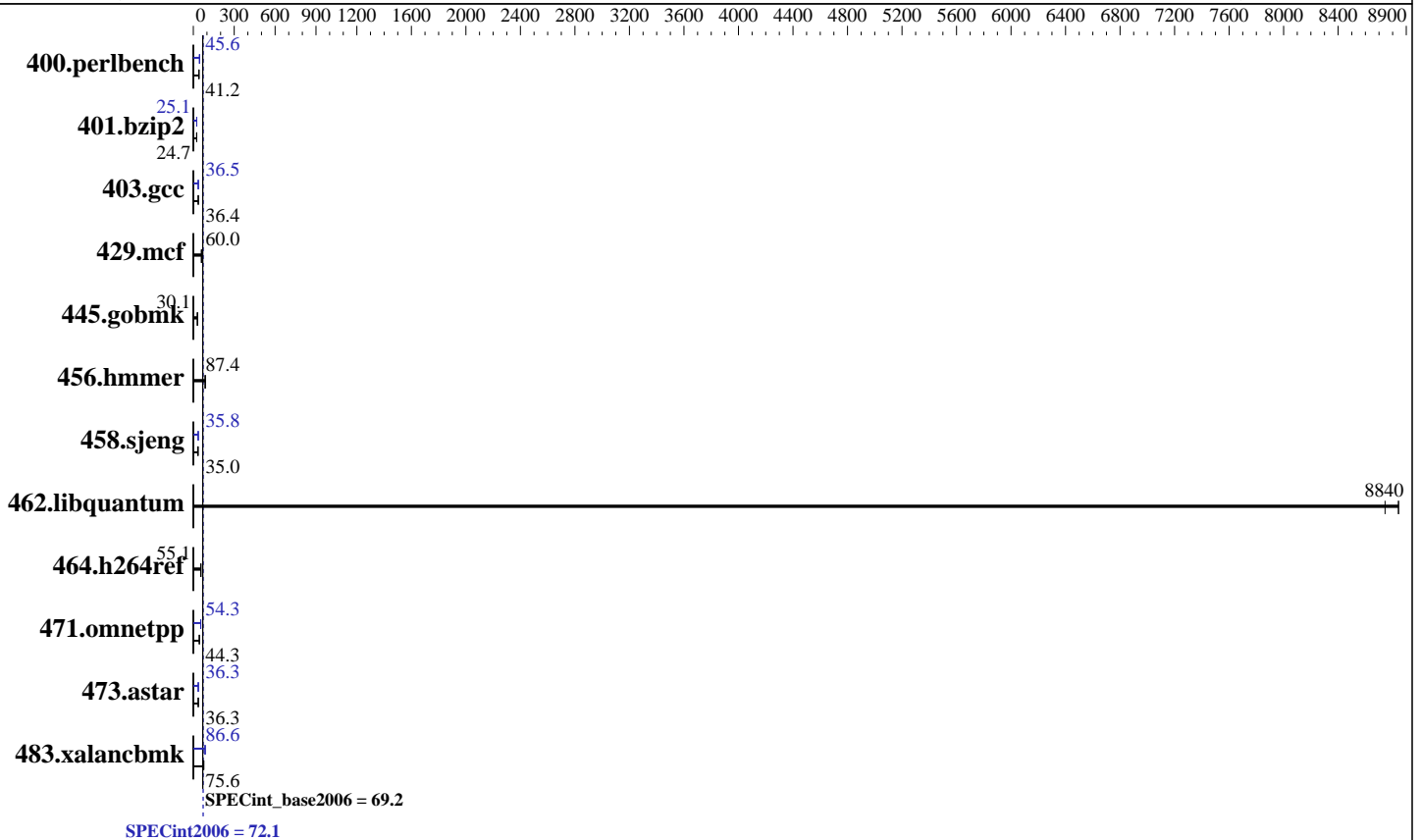
Test date: Oct-2015

Test sponsor: Dell Inc.

Hardware Availability: Mar-2016

Tested by: Dell Inc.

Software Availability: Mar-2016



Hardware

CPU Name: Intel Xeon E5-2697A v4
 CPU Characteristics: Intel Turbo Boost Technology up to 3.60 GHz
 CPU MHz: 2600
 FPU: Integrated
 CPU(s) enabled: 32 cores, 2 chips, 16 cores/chip, 2 threads/core
 CPU(s) orderable: 1,2 chip
 Primary Cache: 32 KB I + 32 KB D on chip per core
 Secondary Cache: 256 KB I+D on chip per core
 L3 Cache: 40 MB I+D on chip per chip
 Other Cache: None
 Memory: 512 GB (16 x 32 GB 2Rx4 PC4-2400T-R)
 Disk Subsystem: 1 x 160 GB SATA SSD
 Other Hardware: None

Software

Operating System: Red Hat Enterprise Linux Server release 7.1 (Maipo)
 3.10.0-229.el7.x86_64
 Compiler: C/C++: Version 16.0.0.101 of Intel C++ Studio XE for Linux
 Auto Parallel: Yes
 File System: xfs
 System State: Run level 3 (multi-user)
 Base Pointers: 32/64-bit
 Peak Pointers: 32/64-bit
 Other Software: Microquill SmartHeap V10.2



SPEC CINT2006 Result

Copyright 2006-2016 Standard Performance Evaluation Corporation

Dell Inc.

SPECint2006 = 72.1

PowerEdge R730 (Intel Xeon E5-2697A v4, 2.60 GHz)

SPECint_base2006 = 69.2

CPU2006 license: 55
Test sponsor: Dell Inc.
Tested by: Dell Inc.

Test date: Oct-2015
Hardware Availability: Mar-2016
Software Availability: Mar-2016

Results Table

Benchmark	Base						Peak					
	Seconds	Ratio	Seconds	Ratio	Seconds	Ratio	Seconds	Ratio	Seconds	Ratio	Seconds	Ratio
400.perlbench	237	41.3	<u>237</u>	<u>41.2</u>	237	41.2	214	45.7	215	45.5	<u>214</u>	<u>45.6</u>
401.bzip2	390	24.7	<u>391</u>	<u>24.7</u>	392	24.6	<u>384</u>	<u>25.1</u>	384	25.1	384	25.1
403.gcc	221	36.4	<u>221</u>	<u>36.4</u>	222	36.2	220	36.5	225	35.8	<u>220</u>	<u>36.5</u>
429.mcf	<u>152</u>	<u>60.0</u>	151	60.4	153	59.5	<u>152</u>	<u>60.0</u>	151	60.4	153	59.5
445.gobmk	349	30.1	348	30.1	<u>348</u>	<u>30.1</u>	349	30.1	348	30.1	<u>348</u>	<u>30.1</u>
456.hammer	107	87.2	107	87.5	<u>107</u>	<u>87.4</u>	107	87.2	107	87.5	<u>107</u>	<u>87.4</u>
458.sjeng	383	31.6	<u>345</u>	<u>35.0</u>	344	35.1	338	35.9	338	35.8	<u>338</u>	<u>35.8</u>
462.libquantum	2.37	8740	2.34	8840	<u>2.34</u>	<u>8840</u>	2.37	8740	2.34	8840	<u>2.34</u>	<u>8840</u>
464.h264ref	401	55.2	402	55.0	<u>401</u>	<u>55.1</u>	401	55.2	402	55.0	<u>401</u>	<u>55.1</u>
471.omnetpp	142	44.1	141	44.3	<u>141</u>	<u>44.3</u>	<u>115</u>	<u>54.3</u>	116	53.8	115	54.5
473.astar	194	36.3	194	36.2	<u>194</u>	<u>36.3</u>	193	36.3	<u>193</u>	<u>36.3</u>	193	36.4
483.xalancbmk	89.0	77.6	92.4	74.7	<u>91.3</u>	<u>75.6</u>	<u>79.7</u>	<u>86.6</u>	79.9	86.4	79.7	86.6

Results appear in the order in which they were run. Bold underlined text indicates a median measurement.

Submit Notes

The config file option 'submit' was used.

Operating System Notes

Stack size set to unlimited using "ulimit -s unlimited"

Platform Notes

BIOS settings:
 Snoop Mode set to Opportunistic Snoop Broadcast
 Virtualization Technology disabled
 System Profile set to Performance
 Memory Patrol Scrub disabled
 Cstates/C1E enabled
 Sysinfo program /root/cpu2006-1.2/config/sysinfo.rev6914
 \$Rev: 6914 \$ \$Date:: 2014-06-25 #\$ e3fbb8667b5a285932ceab81e28219e1
 running on localhost.localdomain Tue Oct 27 11:11:06 2015

This section contains SUT (System Under Test) info as seen by some common utilities. To remove or add to this section, see: <http://www.spec.org/cpu2006/Docs/config.html#sysinfo>

From /proc/cpuinfo
 model name : Intel(R) Xeon(R) CPU E5-2697A v4 @ 2.60GHz
 2 "physical id"s (chips)
 64 "processors"
 cores, siblings (Caution: counting these is hw and system dependent. The
 Continued on next page



SPEC CINT2006 Result

Copyright 2006-2016 Standard Performance Evaluation Corporation

Dell Inc.

SPECint2006 = 72.1

PowerEdge R730 (Intel Xeon E5-2697A v4, 2.60 GHz)

SPECint_base2006 = 69.2

CPU2006 license: 55

Test date: Oct-2015

Test sponsor: Dell Inc.

Hardware Availability: Mar-2016

Tested by: Dell Inc.

Software Availability: Mar-2016

Platform Notes (Continued)

following excerpts from /proc/cpuinfo might not be reliable. Use with caution.)

```

cpu cores : 16
siblings  : 32
physical 0: cores 0 1 2 3 4 5 6 7 8 9 10 11 12 13 14 15
physical 1: cores 0 1 2 3 4 5 6 7 8 9 10 11 12 13 14 15
cache size : 40960 KB

```

From /proc/meminfo

```

MemTotal:      528283000 kB
HugePages_Total:      0
Hugepagesize:    2048 kB

```

From /etc/*release* /etc/*version*

```

os-release:
NAME="Red Hat Enterprise Linux Server"
VERSION="7.1 (Maipo)"
ID="rhel"
ID_LIKE="fedora"
VERSION_ID="7.1"
PRETTY_NAME="Red Hat Enterprise Linux Server 7.1 (Maipo)"
ANSI_COLOR="0;31"
CPE_NAME="cpe:/o:redhat:enterprise_linux:7.1:GA:server"
redhat-release: Red Hat Enterprise Linux Server release 7.1 (Maipo)
system-release: Red Hat Enterprise Linux Server release 7.1 (Maipo)
system-release-cpe: cpe:/o:redhat:enterprise_linux:7.1:ga:server

```

uname -a:

```

Linux localhost.localdomain 3.10.0-229.el7.x86_64 #1 SMP Thu Jan 29 18:37:38
EST 2015 x86_64 x86_64 x86_64 GNU/Linux

```

run-level 3 Oct 27 10:48

SPEC is set to: /root/cpu2006-1.2

```

Filesystem      Type      Size      Used Avail Use% Mounted on
/dev/sda2        xfs       131G      6.9G  124G   6% /

```

Additional information from dmidecode:

Warning: Use caution when you interpret this section. The 'dmidecode' program reads system data which is "intended to allow hardware to be accurately determined", but the intent may not be met, as there are frequent changes to hardware, firmware, and the "DMTF SMBIOS" standard.

BIOS Dell Inc. 1.7.8 10/19/2015

Memory:

```

16x 00CE00B300CE M393A4K40BB1-CRC 32 GB 2 rank 2400 MHz
8x Not Specified Not Specified

```

(End of data from sysinfo program)



SPEC CINT2006 Result

Copyright 2006-2016 Standard Performance Evaluation Corporation

Dell Inc.

SPECint2006 = 72.1

PowerEdge R730 (Intel Xeon E5-2697A v4, 2.60 GHz)

SPECint_base2006 = 69.2

CPU2006 license: 55

Test date: Oct-2015

Test sponsor: Dell Inc.

Hardware Availability: Mar-2016

Tested by: Dell Inc.

Software Availability: Mar-2016

General Notes

Environment variables set by runspec before the start of the run:

KMP_AFFINITY = "granularity=fine,scatter"

LD_LIBRARY_PATH = "/root/cpu2006-1.2/libs/32:/root/cpu2006-1.2/libs/64:/root/cpu2006-1.2/sh"

OMP_NUM_THREADS = "32"

Binaries compiled on a system with 1x Intel Core i5-4670K CPU + 32GB memory using RedHat EL 7.1

Transparent Huge Pages enabled with:

echo always > /sys/kernel/mm/transparent_hugepage/enabled

Base Compiler Invocation

C benchmarks:

icc -m64

C++ benchmarks:

icpc -m64

Base Portability Flags

400.perlbench: -DSPEC_CPU_LP64 -DSPEC_CPU_LINUX_X64

401.bzip2: -DSPEC_CPU_LP64

403.gcc: -DSPEC_CPU_LP64

429.mcf: -DSPEC_CPU_LP64

445.gobmk: -DSPEC_CPU_LP64

456.hmmer: -DSPEC_CPU_LP64

458.sjeng: -DSPEC_CPU_LP64

462.libquantum: -DSPEC_CPU_LP64 -DSPEC_CPU_LINUX

464.h264ref: -DSPEC_CPU_LP64

471.omnetpp: -DSPEC_CPU_LP64

473.astar: -DSPEC_CPU_LP64

483.xalancbmk: -DSPEC_CPU_LP64 -DSPEC_CPU_LINUX

Base Optimization Flags

C benchmarks:

-xCORE-AVX2 -ipo -O3 -no-prec-div -parallel -opt-prefetch -auto-p32

C++ benchmarks:

-xCORE-AVX2 -ipo -O3 -no-prec-div -opt-prefetch -auto-p32

-Wl,-z,muldefs -L/sh -lsmarthheap64



SPEC CINT2006 Result

Copyright 2006-2016 Standard Performance Evaluation Corporation

Dell Inc.

SPECint2006 = 72.1

PowerEdge R730 (Intel Xeon E5-2697A v4, 2.60 GHz)

SPECint_base2006 = 69.2

CPU2006 license: 55

Test date: Oct-2015

Test sponsor: Dell Inc.

Hardware Availability: Mar-2016

Tested by: Dell Inc.

Software Availability: Mar-2016

Base Other Flags

C benchmarks:

403.gcc: -Dalloca=_alloca

Peak Compiler Invocation

C benchmarks (except as noted below):

icc -m64

400.perlbench: icc -m32 -L/opt/intel/compilers_and_libraries_2016/linux/compiler/lib/ia32_lin

C++ benchmarks (except as noted below):

icpc -m32 -L/opt/intel/compilers_and_libraries_2016/linux/compiler/lib/ia32_lin

473.astar: icpc -m64

Peak Portability Flags

400.perlbench: -D_FILE_OFFSET_BITS=64 -DSPEC_CPU_LINUX_IA32
401.bzip2: -DSPEC_CPU_LP64
403.gcc: -DSPEC_CPU_LP64
429.mcf: -DSPEC_CPU_LP64
445.gobmk: -DSPEC_CPU_LP64
456.hmmer: -DSPEC_CPU_LP64
458.sjeng: -DSPEC_CPU_LP64
462.libquantum: -DSPEC_CPU_LP64 -DSPEC_CPU_LINUX
464.h264ref: -DSPEC_CPU_LP64
471.omnetpp: -D_FILE_OFFSET_BITS=64
473.astar: -DSPEC_CPU_LP64
483.xalancbmk: -D_FILE_OFFSET_BITS=64 -DSPEC_CPU_LINUX

Peak Optimization Flags

C benchmarks:

400.perlbench: -xCORE-AVX2(pass 2) -prof-gen:threadsafe(pass 1)
-ipo(pass 2) -O3(pass 2) -no-prec-div(pass 2)
-par-num-threads=1(pass 1) -prof-use(pass 2) -opt-prefetch
-ansi-alias

401.bzip2: -xCORE-AVX2(pass 2) -prof-gen:threadsafe(pass 1)
-ipo(pass 2) -O3(pass 2) -no-prec-div
-par-num-threads=1(pass 1) -prof-use(pass 2) -auto-ilp32
-opt-prefetch -ansi-alias

Continued on next page



SPEC CINT2006 Result

Copyright 2006-2016 Standard Performance Evaluation Corporation

Dell Inc.

SPECint2006 = 72.1

PowerEdge R730 (Intel Xeon E5-2697A v4, 2.60 GHz)

SPECint_base2006 = 69.2

CPU2006 license: 55

Test date: Oct-2015

Test sponsor: Dell Inc.

Hardware Availability: Mar-2016

Tested by: Dell Inc.

Software Availability: Mar-2016

Peak Optimization Flags (Continued)

403.gcc: -xCORE-AVX2 -ipo -O3 -no-prec-div -inline-calloc
-opt-malloc-options=3 -auto-ilp32

429.mcf: basepeak = yes

445.gobmk: basepeak = yes

456.hmmer: basepeak = yes

458.sjeng: -xCORE-AVX2(pass 2) -prof-gen:threadsafe(pass 1)
-ipo(pass 2) -O3(pass 2) -no-prec-div(pass 2)
-par-num-threads=1(pass 1) -prof-use(pass 2) -unroll4

462.libquantum: basepeak = yes

464.h264ref: basepeak = yes

C++ benchmarks:

471.omnetpp: -xCORE-AVX2(pass 2) -prof-gen:threadsafe(pass 1)
-ipo(pass 2) -O3(pass 2) -no-prec-div(pass 2)
-par-num-threads=1(pass 1) -prof-use(pass 2)
-opt-ra-region-strategy=block -ansi-alias
-Wl,-z,muldefs -L/sh -lsmarheap

473.astar: -xCORE-AVX2 -ipo -O3 -no-prec-div -opt-prefetch
-auto-p32 -Wl,-z,muldefs -L/sh -lsmarheap64

483.xalancbmk: -xCORE-AVX2 -ipo -O3 -no-prec-div -opt-prefetch
-ansi-alias -Wl,-z,muldefs -L/sh -lsmarheap

Peak Other Flags

C benchmarks:

403.gcc: -Dalloca=_alloca

The flags files that were used to format this result can be browsed at

<http://www.spec.org/cpu2006/flags/Intel-ic16.0-official-linux64.html>

<http://www.spec.org/cpu2006/flags/Dell-Platform-Settings-V1.2-revD.20151006.html>

You can also download the XML flags sources by saving the following links:

<http://www.spec.org/cpu2006/flags/Intel-ic16.0-official-linux64.xml>

<http://www.spec.org/cpu2006/flags/Dell-Platform-Settings-V1.2-revD.20151006.xml>



SPEC CINT2006 Result

Copyright 2006-2016 Standard Performance Evaluation Corporation

Dell Inc.

SPECint2006 = 72.1

PowerEdge R730 (Intel Xeon E5-2697A v4, 2.60 GHz)

SPECint_base2006 = 69.2

CPU2006 license: 55

Test date: Oct-2015

Test sponsor: Dell Inc.

Hardware Availability: Mar-2016

Tested by: Dell Inc.

Software Availability: Mar-2016

SPEC and SPECint are registered trademarks of the Standard Performance Evaluation Corporation. All other brand and product names appearing in this result are trademarks or registered trademarks of their respective holders.

For questions about this result, please contact the tester.
For other inquiries, please contact webmaster@spec.org.

Tested with SPEC CPU2006 v1.2.
Report generated on Tue Apr 5 14:54:02 2016 by SPEC CPU2006 PS/PDF formatter v6932.
Originally published on 5 April 2016.