



# SPEC® CINT2006 Result

Copyright 2006-2015 Standard Performance Evaluation Corporation

## Huawei

**SPECint®2006 = 56.2**

### Huawei 5288 V3 (Intel Xeon E5-2658 v3)

**SPECint\_base2006 = 54.3**

CPU2006 license: 3175

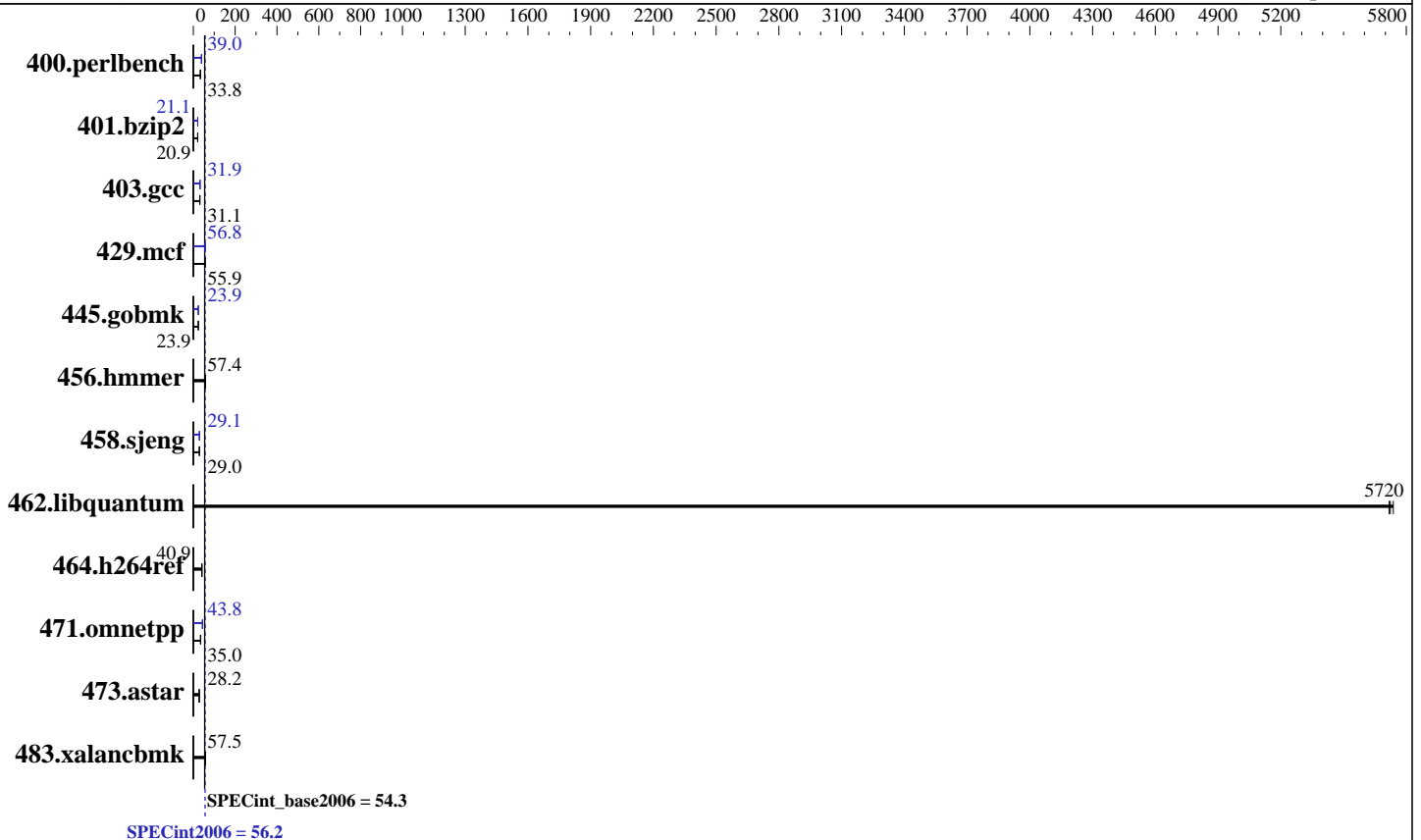
Test sponsor: Huawei

Tested by: Huawei

Test date: Jul-2015

Hardware Availability: Sep-2014

Software Availability: Sep-2014



### Hardware

CPU Name: Intel Xeon E5-2658 v3  
 CPU Characteristics: Intel Turbo Boost Technology up to 2.90 GHz  
 CPU MHz: 2200  
 FPU: Integrated  
 CPU(s) enabled: 24 cores, 2 chips, 12 cores/chip  
 CPU(s) orderable: 1,2 chip  
 Primary Cache: 32 KB I + 32 KB D on chip per core  
 Secondary Cache: 256 KB I+D on chip per core  
 L3 Cache: 30 MB I+D on chip per chip  
 Other Cache: None  
 Memory: 256 GB (16 x 16 GB 2Rx4 PC4-2133P-R)  
 Disk Subsystem: 1 x 500 GB SATA, 7200 RPM  
 Other Hardware: None

### Software

Operating System: Red Hat Enterprise Linux Server release 7.0 (Maipo)  
 3.10.0-123.el7.x86\_64  
 Compiler: C/C++: Version 15.0.0.090 of Intel C++ Studio XE for Linux  
 Auto Parallel: Yes  
 File System: ext4  
 System State: Run level 3 (multi-user)  
 Base Pointers: 32/64-bit  
 Peak Pointers: 32/64-bit  
 Other Software: Microquill SmartHeap V10.0



# SPEC CINT2006 Result

Copyright 2006-2015 Standard Performance Evaluation Corporation

Huawei

SPECint2006 = 56.2

Huawei 5288 V3 (Intel Xeon E5-2658 v3)

SPECint\_base2006 = 54.3

CPU2006 license: 3175  
Test sponsor: Huawei  
Tested by: Huawei

Test date: Jul-2015  
Hardware Availability: Sep-2014  
Software Availability: Sep-2014

## Results Table

Benchmark	Base						Peak					
	Seconds	Ratio	Seconds	Ratio	Seconds	Ratio	Seconds	Ratio	Seconds	Ratio	Seconds	Ratio
400.perlbench	289	33.8	<b><u>289</u></b>	<b><u>33.8</u></b>	288	33.9	250	39.0	<b><u>251</u></b>	<b><u>39.0</u></b>	252	38.7
401.bzip2	463	20.8	<b><u>462</u></b>	<b><u>20.9</u></b>	462	20.9	<b><u>458</u></b>	<b><u>21.1</u></b>	457	21.1	459	21.0
403.gcc	<b><u>258</u></b>	<b><u>31.1</u></b>	258	31.2	259	31.1	252	31.9	<b><u>252</u></b>	<b><u>31.9</u></b>	251	32.1
429.mcf	164	55.7	<b><u>163</u></b>	<b><u>55.9</u></b>	161	56.7	163	56.1	<b><u>161</u></b>	<b><u>56.8</u></b>	160	56.9
445.gobmk	<b><u>439</u></b>	<b><u>23.9</u></b>	441	23.8	438	23.9	439	23.9	<b><u>439</u></b>	<b><u>23.9</u></b>	439	23.9
456.hammer	<b><u>162</u></b>	<b><u>57.4</u></b>	162	57.5	163	57.4	<b><u>162</u></b>	<b><u>57.4</u></b>	162	57.5	163	57.4
458.sjeng	418	29.0	<b><u>418</u></b>	<b><u>29.0</u></b>	418	29.0	416	29.1	416	29.1	<b><u>416</u></b>	<b><u>29.1</u></b>
462.libquantum	3.62	5720	3.61	5740	<b><u>3.62</u></b>	<b><u>5720</u></b>	3.62	5720	3.61	5740	<b><u>3.62</u></b>	<b><u>5720</u></b>
464.h264ref	540	41.0	542	40.8	<b><u>541</u></b>	<b><u>40.9</u></b>	540	41.0	542	40.8	<b><u>541</u></b>	<b><u>40.9</u></b>
471.omnetpp	176	35.5	186	33.6	<b><u>178</u></b>	<b><u>35.0</u></b>	143	43.7	<b><u>143</u></b>	<b><u>43.8</u></b>	143	43.8
473.astar	248	28.3	250	28.1	<b><u>249</u></b>	<b><u>28.2</u></b>	248	28.3	250	28.1	<b><u>249</u></b>	<b><u>28.2</u></b>
483.xalancbmk	120	57.4	120	57.5	<b><u>120</u></b>	<b><u>57.5</u></b>	120	57.4	120	57.5	<b><u>120</u></b>	<b><u>57.5</u></b>

Results appear in the order in which they were run. Bold underlined text indicates a median measurement.

## Submit Notes

The config file option 'submit' was used.

## Operating System Notes

Stack size set to unlimited using "ulimit -s unlimited"

## Platform Notes

BIOS configuration:  
Set Power Efficiency Mode to Custom  
Set Snoop Mode to ES mode  
Set Patrol Scrub to Disable  
Set Hyper-Threading to Disable  
Sysinfo program /spec/config/sysinfo.rev6914  
\$Rev: 6914 \$ \$Date:: 2014-06-25 #\$ e3fbb8667b5a285932ceab81e28219e1  
running on localhost.localdomain Thu Jul 23 07:22:59 2015

This section contains SUT (System Under Test) info as seen by some common utilities. To remove or add to this section, see: <http://www.spec.org/cpu2006/Docs/config.html#sysinfo>

From /proc/cpuinfo  
model name : Intel(R) Xeon(R) CPU E5-2658 v3 @ 2.20GHz  
2 "physical id"s (chips)  
24 "processors"  
cores, siblings (Caution: counting these is hw and system dependent. The following excerpts from /proc/cpuinfo might not be reliable. Use with  
Continued on next page



# SPEC CINT2006 Result

Copyright 2006-2015 Standard Performance Evaluation Corporation

Huawei

SPECint2006 = 56.2

Huawei 5288 V3 (Intel Xeon E5-2658 v3)

SPECint\_base2006 = 54.3

CPU2006 license: 3175

Test sponsor: Huawei

Tested by: Huawei

Test date: Jul-2015

Hardware Availability: Sep-2014

Software Availability: Sep-2014

## Platform Notes (Continued)

```

caution.)
  cpu cores : 12
  siblings  : 12
  physical 0: cores 0 1 2 3 4 5 8 9 10 11 12 13
  physical 1: cores 0 1 2 3 4 5 8 9 10 11 12 13
  cache size : 30720 KB

```

```

From /proc/meminfo
MemTotal:      263578448 kB
HugePages_Total:      0
Hugepagesize:    2048 kB

```

```

From /etc/*release* /etc/*version*
os-release:
NAME="Red Hat Enterprise Linux Server"
VERSION="7.0 (Maipo)"
ID="rhel"
ID_LIKE="fedora"
VERSION_ID="7.0"
PRETTY_NAME="Red Hat Enterprise Linux Server 7.0 (Maipo)"
ANSI_COLOR="0;31"
CPE_NAME="cpe:/o:redhat:enterprise_linux:7.0:GA:server"
redhat-release: Red Hat Enterprise Linux Server release 7.0 (Maipo)
system-release: Red Hat Enterprise Linux Server release 7.0 (Maipo)
system-release-cpe: cpe:/o:redhat:enterprise_linux:7.0:ga:server

```

```

uname -a:
Linux localhost.localdomain 3.10.0-123.el7.x86_64 #1 SMP Mon May 5 11:16:57
EDT 2014 x86_64 x86_64 x86_64 GNU/Linux

```

run-level 3 Jul 23 07:21

```

SPEC is set to: /spec
Filesystem      Type      Size      Used Avail Use% Mounted on
/dev/sdal        ext4      385G      68G  298G  19% /

```

Additional information from dmidecode:

Warning: Use caution when you interpret this section. The 'dmidecode' program reads system data which is "intended to allow hardware to be accurately determined", but the intent may not be met, as there are frequent changes to hardware, firmware, and the "DMTF SMBIOS" standard.

BIOS Insyde Corp. 1.36 04/09/2015

Memory:

```

8x Micron 36ASF2G72PZ-2G1A2 16 GB 1 rank 2133 MHz
8x Micron 36ASF2G72PZ-2G1A2 16 GB 2 rank 2133 MHz

```

(End of data from sysinfo program)



# SPEC CINT2006 Result

Copyright 2006-2015 Standard Performance Evaluation Corporation

Huawei

SPECint2006 = 56.2

Huawei 5288 V3 (Intel Xeon E5-2658 v3)

SPECint\_base2006 = 54.3

CPU2006 license: 3175

Test sponsor: Huawei

Tested by: Huawei

Test date: Jul-2015

Hardware Availability: Sep-2014

Software Availability: Sep-2014

## General Notes

Environment variables set by runspec before the start of the run:

```
KMP_AFFINITY = "granularity=fine,compact,1,0"
LD_LIBRARY_PATH = "/spec/libs/32:/spec/libs/64:/spec/sh"
OMP_NUM_THREADS = "24"
```

Binaries compiled on a system with 1x Core i5-4670K CPU + 16GB memory using RedHat EL 7.0

Transparent Huge Pages enabled with:

```
echo always > /sys/kernel/mm/transparent_hugepage/enabled
```

runspec command invoked through numactl i.e.:

```
numactl --interleave=all runspec <etc>
```

## Base Compiler Invocation

C benchmarks:

```
icc -m64
```

C++ benchmarks:

```
icpc -m64
```

## Base Portability Flags

```
400.perlbench: -DSPEC_CPU_LP64 -DSPEC_CPU_LINUX_X64
401.bzip2: -DSPEC_CPU_LP64
403.gcc: -DSPEC_CPU_LP64
429.mcf: -DSPEC_CPU_LP64
445.gobmk: -DSPEC_CPU_LP64
456.hmmer: -DSPEC_CPU_LP64
458.sjeng: -DSPEC_CPU_LP64
462.libquantum: -DSPEC_CPU_LP64 -DSPEC_CPU_LINUX
464.h264ref: -DSPEC_CPU_LP64
471.omnetpp: -DSPEC_CPU_LP64
473.astar: -DSPEC_CPU_LP64
483.xalancbmk: -DSPEC_CPU_LP64 -DSPEC_CPU_LINUX
```

## Base Optimization Flags

C benchmarks:

```
-xCORE-AVX2 -ipo -O3 -no-prec-div -parallel -opt-prefetch -auto-p32
```

C++ benchmarks:

```
-xCORE-AVX2 -ipo -O3 -no-prec-div -opt-prefetch -auto-p32
-Wl,-z,muldefs -L/sh -lsmartheap64
```



# SPEC CINT2006 Result

Copyright 2006-2015 Standard Performance Evaluation Corporation

<b>Huawei</b>	<b>SPECint2006 =</b>	<b>56.2</b>
<b>Huawei 5288 V3 (Intel Xeon E5-2658 v3)</b>	<b>SPECint_base2006 =</b>	<b>54.3</b>

<b>CPU2006 license:</b> 3175	<b>Test date:</b> Jul-2015
<b>Test sponsor:</b> Huawei	<b>Hardware Availability:</b> Sep-2014
<b>Tested by:</b> Huawei	<b>Software Availability:</b> Sep-2014

## Base Other Flags

C benchmarks:

403.gcc: -Dalloca=\_alloca

## Peak Compiler Invocation

C benchmarks (except as noted below):

icc -m64

400.perlbench: icc -m32 -L/opt/intel/composer\_xe\_2015/lib/ia32

445.gobmk: icc -m32 -L/opt/intel/composer\_xe\_2015/lib/ia32

C++ benchmarks (except as noted below):

icpc -m64

471.omnetpp: icpc -m32 -L/opt/intel/composer\_xe\_2015/lib/ia32

## Peak Portability Flags

400.perlbench: -DSPEC\_CPU\_LINUX\_IA32  
401.bzip2: -DSPEC\_CPU\_LP64  
403.gcc: -DSPEC\_CPU\_LP64  
429.mcf: -DSPEC\_CPU\_LP64  
456.hmmer: -DSPEC\_CPU\_LP64  
458.sjeng: -DSPEC\_CPU\_LP64  
462.libquantum: -DSPEC\_CPU\_LP64 -DSPEC\_CPU\_LINUX  
464.h264ref: -DSPEC\_CPU\_LP64  
473.astar: -DSPEC\_CPU\_LP64  
483.xalancbmk: -DSPEC\_CPU\_LP64 -DSPEC\_CPU\_LINUX

## Peak Optimization Flags

C benchmarks:

400.perlbench: -xCORE-AVX2(pass 2) -prof-gen(pass 1) -ipo(pass 2)  
-O3(pass 2) -no-prec-div(pass 2) -prof-use(pass 2)  
-opt-prefetch -ansi-alias

401.bzip2: -xCORE-AVX2(pass 2) -prof-gen(pass 1) -ipo(pass 2)  
-O3(pass 2) -no-prec-div -prof-use(pass 2) -auto-ilp32  
-opt-prefetch -ansi-alias

Continued on next page



# SPEC CINT2006 Result

Copyright 2006-2015 Standard Performance Evaluation Corporation

Huawei

SPECint2006 = 56.2

Huawei 5288 V3 (Intel Xeon E5-2658 v3)

SPECint\_base2006 = 54.3

CPU2006 license: 3175

Test sponsor: Huawei

Tested by: Huawei

Test date: Jul-2015

Hardware Availability: Sep-2014

Software Availability: Sep-2014

## Peak Optimization Flags (Continued)

403.gcc: -xCORE-AVX2 -ipo -O3 -no-prec-div -inline-calloc  
-opt-malloc-options=3 -auto-ilp32

429.mcf: -xCORE-AVX2 -ipo -O3 -no-prec-div -parallel  
-opt-prefetch -auto-p32

445.gobmk: -xCORE-AVX2(pass 2) -prof-gen(pass 1) -prof-use(pass 2)  
-ansi-alias

456.hmmcr: basepeak = yes

458.sjeng: -xCORE-AVX2(pass 2) -prof-gen(pass 1) -ipo(pass 2)  
-O3(pass 2) -no-prec-div(pass 2) -prof-use(pass 2)  
-unroll4

462.libquantum: basepeak = yes

464.h264ref: basepeak = yes

C++ benchmarks:

471.omnetpp: -xCORE-AVX2(pass 2) -prof-gen(pass 1) -ipo(pass 2)  
-O3(pass 2) -no-prec-div(pass 2) -prof-use(pass 2)  
-opt-ra-region-strategy=block -ansi-alias  
-Wl,-z,muldefs -L/sh -lsmartheap

473.astar: basepeak = yes

483.xalancbmk: basepeak = yes

## Peak Other Flags

C benchmarks:

403.gcc: -Dalloca=\_alloca

The flags files that were used to format this result can be browsed at

<http://www.spec.org/cpu2006/flags/Intel-ic15.0-official-linux64.html>

<http://www.spec.org/cpu2006/flags/Huawei-Platform-Settings-HASWELL-V1.4.html>

You can also download the XML flags sources by saving the following links:

<http://www.spec.org/cpu2006/flags/Intel-ic15.0-official-linux64.xml>

<http://www.spec.org/cpu2006/flags/Huawei-Platform-Settings-HASWELL-V1.4.xml>



# SPEC CINT2006 Result

Copyright 2006-2015 Standard Performance Evaluation Corporation

Huawei

SPECint2006 = 56.2

Huawei 5288 V3 (Intel Xeon E5-2658 v3)

SPECint\_base2006 = 54.3

CPU2006 license: 3175

Test sponsor: Huawei

Tested by: Huawei

Test date: Jul-2015

Hardware Availability: Sep-2014

Software Availability: Sep-2014

SPEC and SPECint are registered trademarks of the Standard Performance Evaluation Corporation. All other brand and product names appearing in this result are trademarks or registered trademarks of their respective holders.

For questions about this result, please contact the tester.  
For other inquiries, please contact [webmaster@spec.org](mailto:webmaster@spec.org).

Tested with SPEC CPU2006 v1.2.  
Report generated on Tue Aug 25 17:52:15 2015 by SPEC CPU2006 PS/PDF formatter v6932.  
Originally published on 25 August 2015.