



SPEC® CINT2006 Result

Copyright 2006-2015 Standard Performance Evaluation Corporation

Huawei

SPECint®_rate2006 = 1190

Huawei CH242 V3 (Intel Xeon E7-4820 v3)

SPECint_rate_base2006 = 1150

CPU2006 license: 3175

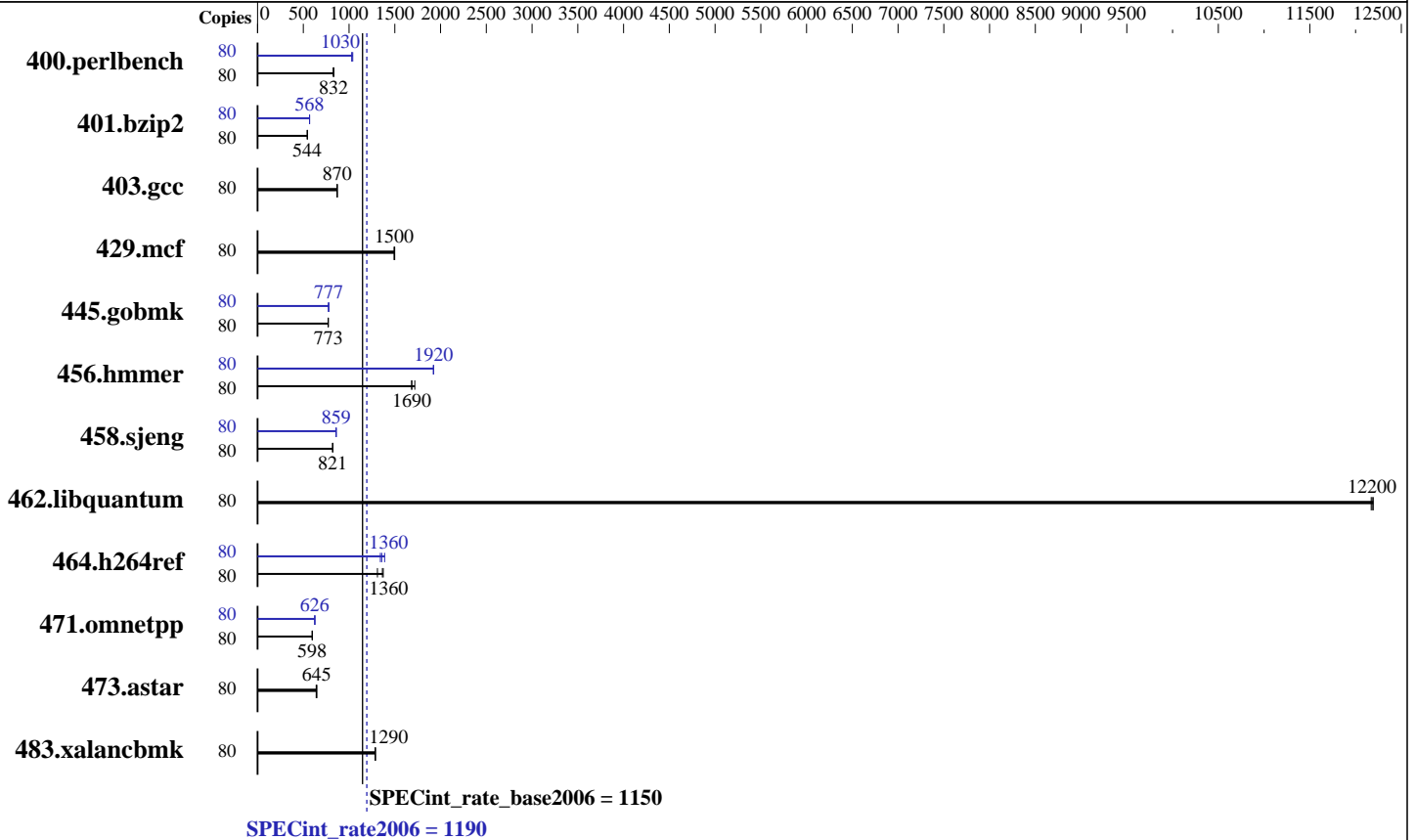
Test sponsor: Huawei

Tested by: Huawei

Test date: Jul-2015

Hardware Availability: May-2015

Software Availability: Sep-2014



Hardware

CPU Name: Intel Xeon E7-4820 v3
 CPU Characteristics:
 CPU MHz: 1900
 FPU: Integrated
 CPU(s) enabled: 40 cores, 4 chips, 10 cores/chip, 2 threads/core
 CPU(s) orderable: 2,4 chips
 Primary Cache: 32 KB I + 32 KB D on chip per core
 Secondary Cache: 256 KB I+D on chip per core
 L3 Cache: 25 MB I+D on chip per chip
 Other Cache: None
 Memory: 512 GB (32 x 16 GB 2Rx4 PC4-2133P-R, running at 1333 MHz)
 Disk Subsystem: 1 x 500 GB SATA, 7200 RPM
 Other Hardware: None

Software

Operating System: Red Hat Enterprise Linux Server release 7.0 (Maipo)
 3.10.0-123.el7.x86_64
 Compiler: C/C++: Version 15.0.0.090 of Intel C++ Studio XE for Linux
 Auto Parallel: No
 File System: xfs
 System State: Run level 3 (multi-user)
 Base Pointers: 32-bit
 Peak Pointers: 32/64-bit
 Other Software: Microquill SmartHeap V10.0



SPEC CINT2006 Result

Copyright 2006-2015 Standard Performance Evaluation Corporation

Huawei

SPECint_rate2006 = 1190

Huawei CH242 V3 (Intel Xeon E7-4820 v3)

SPECint_rate_base2006 = 1150

CPU2006 license: 3175
Test sponsor: Huawei
Tested by: Huawei

Test date: Jul-2015
Hardware Availability: May-2015
Software Availability: Sep-2014

Results Table

Benchmark	Base							Peak						
	Copies	Seconds	Ratio	Seconds	Ratio	Seconds	Ratio	Copies	Seconds	Ratio	Seconds	Ratio	Seconds	Ratio
400.perlbench	80	938	834	<u>939</u>	<u>832</u>	946	826	80	758	1030	751	1040	<u>758</u>	<u>1030</u>
401.bzip2	80	1418	544	1421	543	<u>1419</u>	<u>544</u>	80	1358	568	<u>1358</u>	<u>568</u>	1359	568
403.gcc	80	740	871	741	869	<u>740</u>	<u>870</u>	80	740	871	741	869	<u>740</u>	<u>870</u>
429.mcf	80	489	1490	<u>488</u>	<u>1500</u>	487	1500	80	489	1490	<u>488</u>	<u>1500</u>	487	1500
445.gobmk	80	1086	773	<u>1086</u>	<u>773</u>	1089	771	80	1082	776	1080	777	<u>1080</u>	<u>777</u>
456.hammer	80	443	1680	<u>443</u>	<u>1690</u>	434	1720	80	<u>388</u>	<u>1920</u>	388	1920	388	1920
458.sjeng	80	1180	821	1177	823	<u>1179</u>	<u>821</u>	80	<u>1127</u>	<u>859</u>	1126	859	1128	858
462.libquantum	80	136	12200	136	12200	<u>136</u>	<u>12200</u>	80	136	12200	136	12200	<u>136</u>	<u>12200</u>
464.h264ref	80	<u>1298</u>	<u>1360</u>	1289	1370	1351	1310	80	<u>1304</u>	<u>1360</u>	1319	1340	1275	1390
471.omnetpp	80	834	599	<u>837</u>	<u>598</u>	838	597	80	799	626	<u>799</u>	<u>626</u>	799	626
473.astar	80	<u>871</u>	<u>645</u>	877	641	867	648	80	<u>871</u>	<u>645</u>	877	641	867	648
483.xalancbmk	80	428	1290	<u>429</u>	<u>1290</u>	430	1280	80	428	1290	<u>429</u>	<u>1290</u>	430	1280

Results appear in the order in which they were run. Bold underlined text indicates a median measurement.

Submit Notes

The numactl mechanism was used to bind copies to processors. The config file option 'submit' was used to generate numactl commands to bind each copy to a specific processor. For details, please see the config file.

Operating System Notes

Stack size set to unlimited using "ulimit -s unlimited"

Platform Notes

BIOS configuration:
Set Power Efficiency Mode to Custom
Set Lock_step to disabled
Baseboard Management Controller used to adjust the fan speed to 100%
Sysinfo program /spec/config/sysinfo.rev6914
\$Rev: 6914 \$ \$Date:: 2014-06-25 #\$ e3fbb8667b5a285932ceab81e28219e1
running on localhost.localdomain Mon Jul 6 07:20:55 2015

This section contains SUT (System Under Test) info as seen by some common utilities. To remove or add to this section, see:
<http://www.spec.org/cpu2006/Docs/config.html#sysinfo>

From /proc/cpuinfo
model name : Intel(R) Xeon(R) CPU E7-4820 v3 @ 1.90GHz
4 "physical id"s (chips)
80 "processors"
cores, siblings (Caution: counting these is hw and system dependent. The
Continued on next page



SPEC CINT2006 Result

Copyright 2006-2015 Standard Performance Evaluation Corporation

Huawei

SPECint_rate2006 = 1190

Huawei CH242 V3 (Intel Xeon E7-4820 v3)

SPECint_rate_base2006 = 1150

CPU2006 license: 3175

Test sponsor: Huawei

Tested by: Huawei

Test date: Jul-2015

Hardware Availability: May-2015

Software Availability: Sep-2014

Platform Notes (Continued)

following excerpts from /proc/cpuinfo might not be reliable. Use with caution.)

```

cpu cores : 10
siblings  : 20
physical 0: cores 0 1 2 3 4 8 9 10 11 12
physical 1: cores 0 1 2 3 4 8 9 10 11 12
physical 2: cores 0 1 2 3 4 8 9 10 11 12
physical 3: cores 0 1 2 3 4 8 9 10 11 12
cache size : 25600 KB

```

From /proc/meminfo

```

MemTotal:      528020308 kB
HugePages_Total:      0
Hugepagesize:    2048 kB

```

From /etc/*release* /etc/*version*

```

os-release:
NAME="Red Hat Enterprise Linux Server"
VERSION="7.0 (Maipo)"
ID="rhel"
ID_LIKE="fedora"
VERSION_ID="7.0"
PRETTY_NAME="Red Hat Enterprise Linux Server 7.0 (Maipo)"
ANSI_COLOR="0;31"
CPE_NAME="cpe:/o:redhat:enterprise_linux:7.0:GA:server"
redhat-release: Red Hat Enterprise Linux Server release 7.0 (Maipo)
system-release: Red Hat Enterprise Linux Server release 7.0 (Maipo)
system-release-cpe: cpe:/o:redhat:enterprise_linux:7.0:ga:server

```

uname -a:

```

Linux localhost.localdomain 3.10.0-123.el7.x86_64 #1 SMP Mon May 5 11:16:57
EDT 2014 x86_64 x86_64 x86_64 GNU/Linux

```

run-level 3 Jul 6 07:16

SPEC is set to: /spec

```

Filesystem      Type  Size  Used Avail Use% Mounted on
/dev/sda2       xfs   440G  149G  291G  34% /

```

Additional information from dmidecode:

Warning: Use caution when you interpret this section. The 'dmidecode' program reads system data which is "intended to allow hardware to be accurately determined", but the intent may not be met, as there are frequent changes to hardware, firmware, and the "DMTF SMBIOS" standard.

BIOS American Megatrends Inc. BLISZ015 06/09/2015

Memory:

32x Samsung M393A2G40DB0-CPB 16 GB 2 rank 2133 MHz, configured at 1333 MHz

(End of data from sysinfo program)



SPEC CINT2006 Result

Copyright 2006-2015 Standard Performance Evaluation Corporation

Huawei

SPECint_rate2006 = 1190

Huawei CH242 V3 (Intel Xeon E7-4820 v3)

SPECint_rate_base2006 = 1150

CPU2006 license: 3175

Test sponsor: Huawei

Tested by: Huawei

Test date: Jul-2015

Hardware Availability: May-2015

Software Availability: Sep-2014

General Notes

Environment variables set by runspec before the start of the run:
LD_LIBRARY_PATH = "/spec/libs/32:/spec/libs/64:/spec/sh"

Binaries compiled on a system with 1x Core i5-4670K CPU + 16GB memory using RedHat EL 7.0
Transparent Huge Pages enabled with:
echo always > /sys/kernel/mm/transparent_hugepage/enabled
Filesystem page cache cleared with:
echo 1> /proc/sys/vm/drop_caches
runspec command invoked through numactl i.e.:
numactl --interleave=all runspec <etc>

Base Compiler Invocation

C benchmarks:

```
icc -m32 -L/opt/intel/composer_xe_2015/lib/ia32
```

C++ benchmarks:

```
icpc -m32 -L/opt/intel/composer_xe_2015/lib/ia32
```

Base Portability Flags

```
400.perlbench: -DSPEC_CPU_LINUX_IA32  
462.libquantum: -DSPEC_CPU_LINUX  
483.xalancbmk: -DSPEC_CPU_LINUX
```

Base Optimization Flags

C benchmarks:

```
-xCORE-AVX2 -ipo -O3 -no-prec-div -opt-prefetch  
-opt-mem-layout-trans=3
```

C++ benchmarks:

```
-xCORE-AVX2 -ipo -O3 -no-prec-div -opt-prefetch  
-opt-mem-layout-trans=3 -Wl,-z,muldefs -L/sh -lsmarheap
```

Base Other Flags

C benchmarks:

```
403.gcc: -Dalloca=_alloca
```



SPEC CINT2006 Result

Copyright 2006-2015 Standard Performance Evaluation Corporation

Huawei

SPECint_rate2006 = 1190

Huawei CH242 V3 (Intel Xeon E7-4820 v3)

SPECint_rate_base2006 = 1150

CPU2006 license: 3175
Test sponsor: Huawei
Tested by: Huawei

Test date: Jul-2015
Hardware Availability: May-2015
Software Availability: Sep-2014

Peak Compiler Invocation

C benchmarks (except as noted below):

icc -m32 -L/opt/intel/composer_xe_2015/lib/ia32

400.perlbench: icc -m64

401.bzip2: icc -m64

456.hmmer: icc -m64

458.sjeng: icc -m64

C++ benchmarks:

icpc -m32 -L/opt/intel/composer_xe_2015/lib/ia32

Peak Portability Flags

400.perlbench: -DSPEC_CPU_LP64 -DSPEC_CPU_LINUX_X64

401.bzip2: -DSPEC_CPU_LP64

456.hmmer: -DSPEC_CPU_LP64

458.sjeng: -DSPEC_CPU_LP64

462.libquantum: -DSPEC_CPU_LINUX

483.xalancbmk: -DSPEC_CPU_LINUX

Peak Optimization Flags

C benchmarks:

400.perlbench: -xCORE-AVX2(pass 2) -prof-gen(pass 1) -ipo(pass 2)
-O3(pass 2) -no-prec-div(pass 2) -prof-use(pass 2)
-auto-ilp32

401.bzip2: -xCORE-AVX2(pass 2) -prof-gen(pass 1) -ipo(pass 2)
-O3(pass 2) -no-prec-div(pass 2) -prof-use(pass 2)
-opt-prefetch -auto-ilp32 -ansi-alias

403.gcc: basepeak = yes

429.mcf: basepeak = yes

445.gobmk: -xCORE-AVX2(pass 2) -prof-gen(pass 1) -prof-use(pass 2)
-ansi-alias -opt-mem-layout-trans=3

456.hmmer: -xCORE-AVX2 -ipo -O3 -no-prec-div -unroll2 -auto-ilp32

458.sjeng: -xCORE-AVX2(pass 2) -prof-gen(pass 1) -ipo(pass 2)
-O3(pass 2) -no-prec-div(pass 2) -prof-use(pass 2)
-unroll4 -auto-ilp32

Continued on next page



SPEC CINT2006 Result

Copyright 2006-2015 Standard Performance Evaluation Corporation

Huawei

SPECint_rate2006 = 1190

Huawei CH242 V3 (Intel Xeon E7-4820 v3)

SPECint_rate_base2006 = 1150

CPU2006 license: 3175

Test sponsor: Huawei

Tested by: Huawei

Test date: Jul-2015

Hardware Availability: May-2015

Software Availability: Sep-2014

Peak Optimization Flags (Continued)

462.libquantum: basepeak = yes

464.h264ref: -xCORE-AVX2(pass 2) -prof-gen(pass 1) -ipo(pass 2)
-O3(pass 2) -no-prec-div(pass 2) -prof-use(pass 2)
-unroll2 -ansi-alias

C++ benchmarks:

471.omnetpp: -xCORE-AVX2(pass 2) -prof-gen(pass 1) -ipo(pass 2)
-O3(pass 2) -no-prec-div(pass 2) -prof-use(pass 2)
-ansi-alias -opt-ra-region-strategy=block -Wl,-z,muldefs
-L/sh -lsmartheap

473.astar: basepeak = yes

483.xalancbmk: basepeak = yes

Peak Other Flags

C benchmarks:

403.gcc: -Dalloca=_alloca

The flags files that were used to format this result can be browsed at

<http://www.spec.org/cpu2006/flags/Intel-ic15.0-official-linux64.html>

<http://www.spec.org/cpu2006/flags/Huawei-Platform-Settings-HASWELL-V1.4.html>

You can also download the XML flags sources by saving the following links:

<http://www.spec.org/cpu2006/flags/Intel-ic15.0-official-linux64.xml>

<http://www.spec.org/cpu2006/flags/Huawei-Platform-Settings-HASWELL-V1.4.xml>

SPEC and SPECint are registered trademarks of the Standard Performance Evaluation Corporation. All other brand and product names appearing in this result are trademarks or registered trademarks of their respective holders.

For questions about this result, please contact the tester.
For other inquiries, please contact webmaster@spec.org.

Tested with SPEC CPU2006 v1.2.

Report generated on Wed Jul 29 12:09:56 2015 by SPEC CPU2006 PS/PDF formatter v6932.

Originally published on 28 July 2015.