



SPEC® CINT2006 Result

Copyright 2006-2015 Standard Performance Evaluation Corporation

Hewlett-Packard Company

SPECint®2006 = 55.9

ProLiant BL660c Gen9
(2.00 GHz, Intel Xeon E5-4667 v3)

SPECint_base2006 = 54.3

CPU2006 license: 3

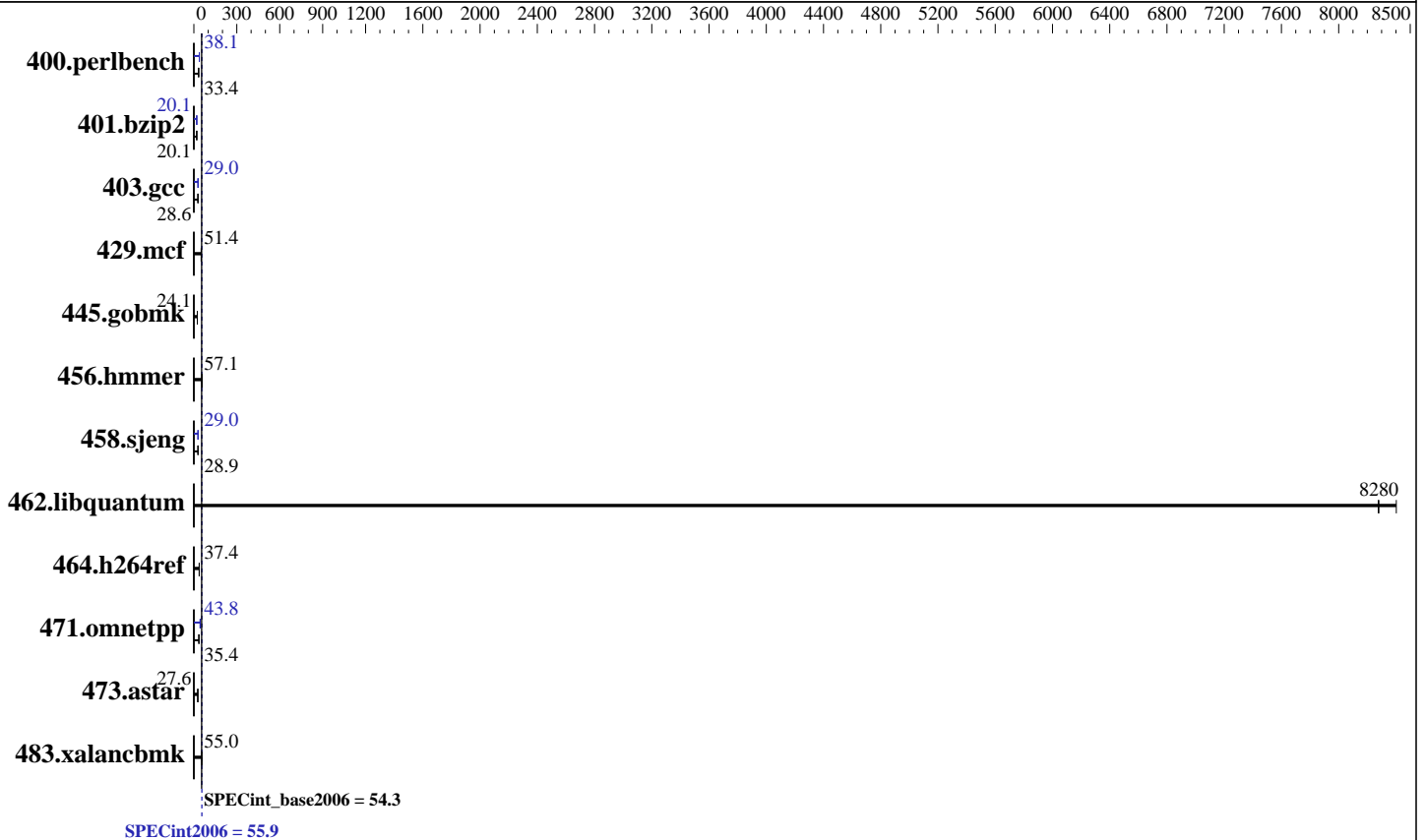
Test date: May-2015

Test sponsor: Hewlett-Packard Company

Hardware Availability: Jun-2015

Tested by: Hewlett-Packard Company

Software Availability: Oct-2014



Hardware

CPU Name: Intel Xeon E5-4667 v3
 CPU Characteristics: Intel Turbo Boost Technology up to 2.90 GHz
 CPU MHz: 2000
 FPU: Integrated
 CPU(s) enabled: 64 cores, 4 chips, 16 cores/chip
 CPU(s) orderable: 2,4 chips
 Primary Cache: 32 KB I + 32 KB D on chip per core
 Secondary Cache: 256 KB I+D on chip per core
 L3 Cache: 40 MB I+D on chip per chip
 Other Cache: None
 Memory: 512 GB (32 x 16 GB 2Rx4 PC4-2133P-R)
 Disk Subsystem: 1 x 400 GB SAS SSD, RAID 0
 Other Hardware: None

Software

Operating System: SUSE Linux Enterprise Server 12 (x86_64)
 Kernel 3.12.28-4-default
 Compiler: C/C++: Version 15.0.0.090 of Intel C++ Studio XE for Linux
 Auto Parallel: Yes
 File System: xfs
 System State: Run level 3 (multi-user)
 Base Pointers: 32/64-bit
 Peak Pointers: 32/64-bit
 Other Software: Microquill SmartHeap V10.0



SPEC CINT2006 Result

Copyright 2006-2015 Standard Performance Evaluation Corporation

Hewlett-Packard Company

SPECint2006 = **55.9**

ProLiant BL660c Gen9
(2.00 GHz, Intel Xeon E5-4667 v3)

SPECint_base2006 = **54.3**

CPU2006 license: 3
Test sponsor: Hewlett-Packard Company
Tested by: Hewlett-Packard Company

Test date: May-2015
Hardware Availability: Jun-2015
Software Availability: Oct-2014

Results Table

Benchmark	Base						Peak					
	Seconds	Ratio	Seconds	Ratio	Seconds	Ratio	Seconds	Ratio	Seconds	Ratio	Seconds	Ratio
400.perlbench	291	33.5	294	33.2	<u>293</u>	<u>33.4</u>	<u>256</u>	<u>38.1</u>	257	38.0	256	38.1
401.bzip2	479	20.1	478	20.2	<u>479</u>	<u>20.1</u>	481	20.1	481	20.1	<u>481</u>	<u>20.1</u>
403.gcc	282	28.5	282	28.6	<u>282</u>	<u>28.6</u>	275	29.2	278	29.0	<u>277</u>	<u>29.0</u>
429.mcf	<u>178</u>	<u>51.4</u>	176	51.7	179	51.0	<u>178</u>	<u>51.4</u>	176	51.7	179	51.0
445.gobmk	<u>435</u>	<u>24.1</u>	436	24.1	435	24.1	<u>435</u>	<u>24.1</u>	436	24.1	435	24.1
456.hammer	163	57.3	164	57.0	<u>163</u>	<u>57.1</u>	163	57.3	164	57.0	<u>163</u>	<u>57.1</u>
458.sjeng	419	28.9	418	28.9	<u>419</u>	<u>28.9</u>	<u>417</u>	<u>29.0</u>	417	29.0	417	29.0
462.libquantum	2.47	8400	<u>2.50</u>	<u>8280</u>	2.50	8280	2.47	8400	<u>2.50</u>	<u>8280</u>	2.50	8280
464.h264ref	592	37.4	589	37.6	<u>591</u>	<u>37.4</u>	592	37.4	589	37.6	<u>591</u>	<u>37.4</u>
471.omnetpp	179	35.0	<u>176</u>	<u>35.4</u>	175	35.6	<u>143</u>	<u>43.8</u>	139	44.9	143	43.7
473.astar	<u>255</u>	<u>27.6</u>	256	27.4	254	27.6	<u>255</u>	<u>27.6</u>	256	27.4	254	27.6
483.xalancbmk	125	55.1	<u>125</u>	<u>55.0</u>	127	54.4	<u>125</u>	<u>55.1</u>	<u>125</u>	<u>55.0</u>	127	54.4

Results appear in the order in which they were run. Bold underlined text indicates a median measurement.

Submit Notes

The config file option 'submit' was used.

Operating System Notes

Stack size set to unlimited using "ulimit -s unlimited"
Transparent Huge Pages enabled with:
echo always > /sys/kernel/mm/transparent_hugepage/enabled

Platform Notes

BIOS Configuration
Intel Hyperthreading options set to Disabled
Power Profile set to Custom
Power Regulator set to Static High Performance Mode
Minimum Processor Idle Power Core C-State set to C6 State
Minimum Processor Idle Power Package C-State set to Package C6 (retention) State
Energy/Performance Bias set to Maximum Performance
Collaborative Power Control set to Enabled
Thermal Configuration set to Maximum Cooling
Processor Power and Utilization Monitoring set to Disabled
Memory Refresh Rate set to 1x Refresh

Sysinfo program /root/cpu2006/config/sysinfo.rev6914
\$Rev: 6914 \$ \$Date:: 2014-06-25 #\$ e3fbb8667b5a285932ceab81e28219e1
running on linux-wzg5 Mon May 11 05:36:10 2015

This section contains SUT (System Under Test) info as seen by
Continued on next page



SPEC CINT2006 Result

Copyright 2006-2015 Standard Performance Evaluation Corporation

Hewlett-Packard Company

SPECint2006 = 55.9

ProLiant BL660c Gen9
(2.00 GHz, Intel Xeon E5-4667 v3)

SPECint_base2006 = 54.3

CPU2006 license: 3
Test sponsor: Hewlett-Packard Company
Tested by: Hewlett-Packard Company

Test date: May-2015
Hardware Availability: Jun-2015
Software Availability: Oct-2014

Platform Notes (Continued)

some common utilities. To remove or add to this section, see:
<http://www.spec.org/cpu2006/Docs/config.html#sysinfo>

```
From /proc/cpuinfo
model name : Intel(R) Xeon(R) CPU E5-4667 v3 @ 2.00GHz
 4 "physical id"s (chips)
 64 "processors"
cores, siblings (Caution: counting these is hw and system dependent. The
following excerpts from /proc/cpuinfo might not be reliable. Use with
caution.)
cpu cores : 16
siblings : 16
physical 0: cores 0 1 2 3 4 5 6 7 8 9 10 11 12 13 14 15
physical 1: cores 0 1 2 3 4 5 6 7 8 9 10 11 12 13 14 15
physical 2: cores 0 1 2 3 4 5 6 7 8 9 10 11 12 13 14 15
physical 3: cores 0 1 2 3 4 5 6 7 8 9 10 11 12 13 14 15
cache size : 40960 KB
```

```
From /proc/meminfo
MemTotal: 529176920 kB
HugePages_Total: 0
Hugepagesize: 2048 kB
```

```
From /etc/*release* /etc/*version*
SuSE-release:
SUSE Linux Enterprise Server 12 (x86_64)
VERSION = 12
PATCHLEVEL = 0
# This file is deprecated and will be removed in a future service pack or
release.
# Please check /etc/os-release for details about this release.
os-release:
NAME="SLES"
VERSION="12"
VERSION_ID="12"
PRETTY_NAME="SUSE Linux Enterprise Server 12"
ID="sles"
ANSI_COLOR="0;32"
CPE_NAME="cpe:/o:suse:sles:12"
```

```
uname -a:
Linux linux-wzg5 3.12.28-4-default #1 SMP Thu Sep 25 17:02:34 UTC 2014
(9879bd4) x86_64 x86_64 x86_64 GNU/Linux
```

run-level 3 May 10 23:50

```
SPEC is set to: /root/cpu2006
Filesystem Type Size Used Avail Use% Mounted on
/dev/sdb4 xfs 300G 8.7G 292G 3% /
```

Additional information from dmidecode:

Warning: Use caution when you interpret this section. The 'dmidecode' program
Continued on next page



SPEC CINT2006 Result

Copyright 2006-2015 Standard Performance Evaluation Corporation

Hewlett-Packard Company

SPECint2006 = 55.9

ProLiant BL660c Gen9
(2.00 GHz, Intel Xeon E5-4667 v3)

SPECint_base2006 = 54.3

CPU2006 license: 3

Test date: May-2015

Test sponsor: Hewlett-Packard Company

Hardware Availability: Jun-2015

Tested by: Hewlett-Packard Company

Software Availability: Oct-2014

Platform Notes (Continued)

reads system data which is "intended to allow hardware to be accurately determined", but the intent may not be met, as there are frequent changes to hardware, firmware, and the "DMTF SMBIOS" standard.

BIOS HP I38 03/05/2015

Memory:

32x HP 752369-081 16 GB 2 rank 2133 MHz

(End of data from sysinfo program)

General Notes

Environment variables set by runspec before the start of the run:

KMP_AFFINITY = "granularity=fine,scatter"

LD_LIBRARY_PATH = "/root/cpu2006/libs/32:/root/cpu2006/libs/64:/root/cpu2006/sh"

OMP_NUM_THREADS = "64"

Binaries compiled on a system with 1x Core i5-4670K CPU + 16GB memory using RedHat EL 7.0

Base Compiler Invocation

C benchmarks:

icc -m64

C++ benchmarks:

icpc -m64

Base Portability Flags

400.perlbench: -DSPEC_CPU_LP64 -DSPEC_CPU_LINUX_X64
401.bzip2: -DSPEC_CPU_LP64
403.gcc: -DSPEC_CPU_LP64
429.mcf: -DSPEC_CPU_LP64
445.gobmk: -DSPEC_CPU_LP64
456.hmmer: -DSPEC_CPU_LP64
458.sjeng: -DSPEC_CPU_LP64
462.libquantum: -DSPEC_CPU_LP64 -DSPEC_CPU_LINUX
464.h264ref: -DSPEC_CPU_LP64
471.omnetpp: -DSPEC_CPU_LP64
473.astar: -DSPEC_CPU_LP64
483.xalanbmk: -DSPEC_CPU_LP64 -DSPEC_CPU_LINUX



SPEC CINT2006 Result

Copyright 2006-2015 Standard Performance Evaluation Corporation

Hewlett-Packard Company

SPECint2006 = 55.9

ProLiant BL660c Gen9
(2.00 GHz, Intel Xeon E5-4667 v3)

SPECint_base2006 = 54.3

CPU2006 license: 3

Test date: May-2015

Test sponsor: Hewlett-Packard Company

Hardware Availability: Jun-2015

Tested by: Hewlett-Packard Company

Software Availability: Oct-2014

Base Optimization Flags

C benchmarks:

-xCORE-AVX2 -ipo -O3 -no-prec-div -parallel -opt-prefetch -auto-p32

C++ benchmarks:

-xCORE-AVX2 -ipo -O3 -no-prec-div -opt-prefetch -auto-p32
-Wl,-z,muldefs -L/sh -lsmarthheap64

Base Other Flags

C benchmarks:

403.gcc: -Dalloca=_alloca

Peak Compiler Invocation

C benchmarks (except as noted below):

icc -m64

400.perlbench: icc -m32 -L/opt/intel/composer_xe_2015/lib/ia32

C++ benchmarks (except as noted below):

icpc -m64

471.omnetpp: icpc -m32 -L/opt/intel/composer_xe_2015/lib/ia32

Peak Portability Flags

400.perlbench: -DSPEC_CPU_LINUX_IA32
401.bzip2: -DSPEC_CPU_LP64
403.gcc: -DSPEC_CPU_LP64
429.mcf: -DSPEC_CPU_LP64
445.gobmk: -DSPEC_CPU_LP64
456.hmmer: -DSPEC_CPU_LP64
458.sjeng: -DSPEC_CPU_LP64
462.libquantum: -DSPEC_CPU_LP64 -DSPEC_CPU_LINUX
464.h264ref: -DSPEC_CPU_LP64
473.astar: -DSPEC_CPU_LP64
483.xalancbmk: -DSPEC_CPU_LP64 -DSPEC_CPU_LINUX



SPEC CINT2006 Result

Copyright 2006-2015 Standard Performance Evaluation Corporation

Hewlett-Packard Company

SPECint2006 = 55.9

ProLiant BL660c Gen9
(2.00 GHz, Intel Xeon E5-4667 v3)

SPECint_base2006 = 54.3

CPU2006 license: 3

Test date: May-2015

Test sponsor: Hewlett-Packard Company

Hardware Availability: Jun-2015

Tested by: Hewlett-Packard Company

Software Availability: Oct-2014

Peak Optimization Flags

C benchmarks:

400.perlbench: -xCORE-AVX2(pass 2) -prof-gen(pass 1) -ipo(pass 2)
-O3(pass 2) -no-prec-div(pass 2) -prof-use(pass 2)
-opt-prefetch -ansi-alias

401.bzip2: -xCORE-AVX2(pass 2) -prof-gen(pass 1) -ipo(pass 2)
-O3(pass 2) -no-prec-div -prof-use(pass 2) -auto-ilp32
-opt-prefetch -ansi-alias

403.gcc: -xCORE-AVX2 -ipo -O3 -no-prec-div -inline-calloc
-opt-malloc-options=3 -auto-ilp32

429.mcf: basepeak = yes

445.gobmk: basepeak = yes

456.hmmmer: basepeak = yes

458.sjeng: -xCORE-AVX2(pass 2) -prof-gen(pass 1) -ipo(pass 2)
-O3(pass 2) -no-prec-div(pass 2) -prof-use(pass 2)
-unroll4

462.libquantum: basepeak = yes

464.h264ref: basepeak = yes

C++ benchmarks:

471.omnetpp: -xCORE-AVX2(pass 2) -prof-gen(pass 1) -ipo(pass 2)
-O3(pass 2) -no-prec-div(pass 2) -prof-use(pass 2)
-opt-ra-region-strategy=block -ansi-alias
-Wl,-z,muldefs -L/sh -lsmartheap

473.astar: basepeak = yes

483.xalanbmk: basepeak = yes

Peak Other Flags

C benchmarks:

403.gcc: -Dalloca=_alloca

The flags files that were used to format this result can be browsed at

<http://www.spec.org/cpu2006/flags/Intel-ic15.0-official-linux64.html>

<http://www.spec.org/cpu2006/flags/HP-Platform-Flags-Intel-V1.2-HSW-revE.html>



SPEC CINT2006 Result

Copyright 2006-2015 Standard Performance Evaluation Corporation

Hewlett-Packard Company

SPECint2006 = 55.9

ProLiant BL660c Gen9
(2.00 GHz, Intel Xeon E5-4667 v3)

SPECint_base2006 = 54.3

CPU2006 license: 3

Test date: May-2015

Test sponsor: Hewlett-Packard Company

Hardware Availability: Jun-2015

Tested by: Hewlett-Packard Company

Software Availability: Oct-2014

You can also download the XML flags sources by saving the following links:

<http://www.spec.org/cpu2006/flags/Intel-ic15.0-official-linux64.xml>

<http://www.spec.org/cpu2006/flags/HP-Platform-Flags-Intel-V1.2-HSW-revE.xml>

SPEC and SPECint are registered trademarks of the Standard Performance Evaluation Corporation. All other brand and product names appearing in this result are trademarks or registered trademarks of their respective holders.

For questions about this result, please contact the tester.
For other inquiries, please contact webmaster@spec.org.

Tested with SPEC CPU2006 v1.2.
Report generated on Tue Jun 2 13:48:50 2015 by SPEC CPU2006 PS/PDF formatter v6932.
Originally published on 2 June 2015.