



SPEC® CINT2006 Result

Copyright 2006-2015 Standard Performance Evaluation Corporation

NEC Corporation

SPECint®2006 = 56.5

Express5800/R120f-1E (Intel Xeon E5-2650 v3)

SPECint_base2006 = 54.0

CPU2006 license: 9006

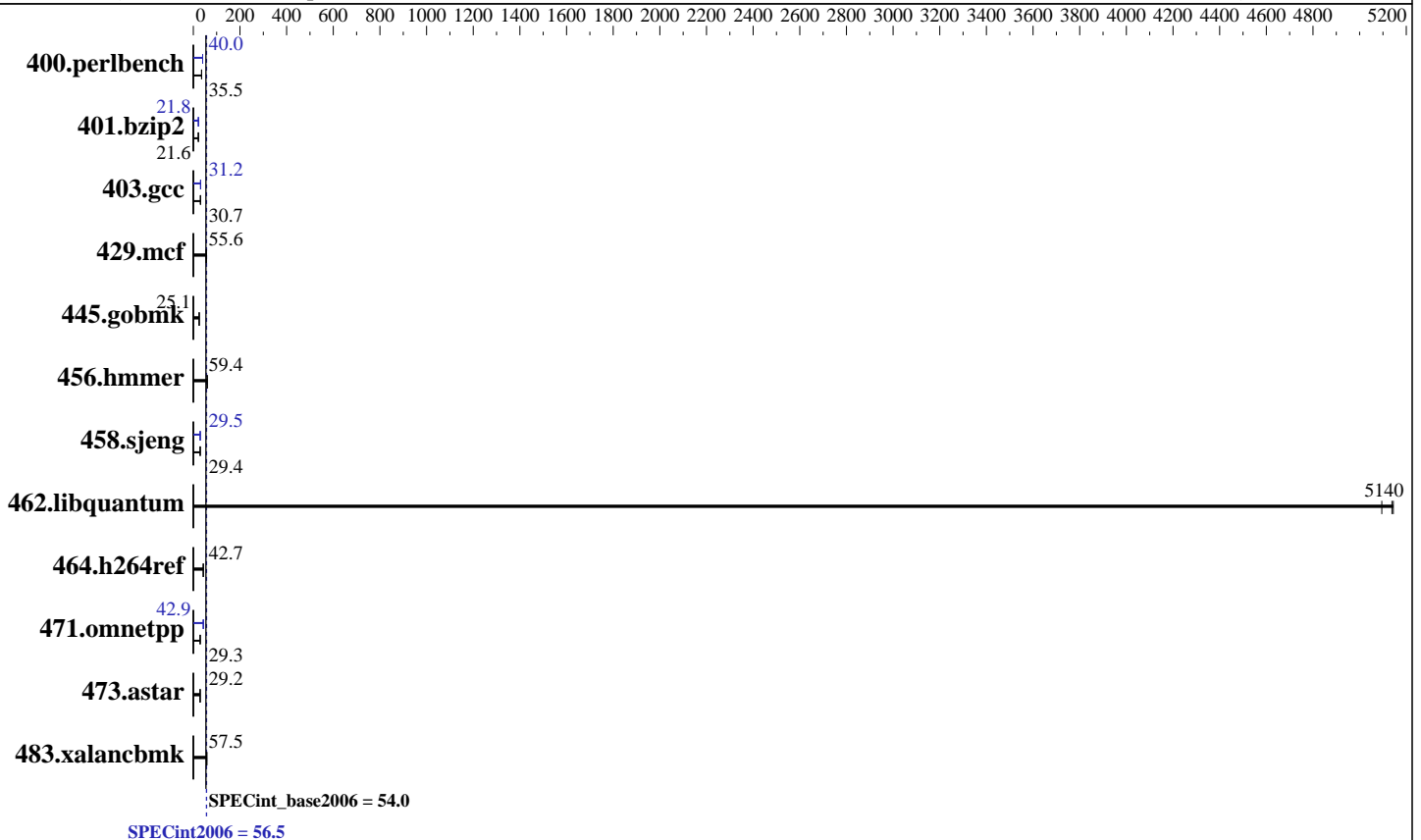
Test date: Apr-2015

Test sponsor: NEC Corporation

Hardware Availability: Jan-2015

Tested by: NEC Corporation

Software Availability: Jul-2014



Hardware

CPU Name: Intel Xeon E5-2650 v3
 CPU Characteristics: Intel Turbo Boost Technology up to 3.00 GHz
 CPU MHz: 2300
 FPU: Integrated
 CPU(s) enabled: 20 cores, 2 chips, 10 cores/chip
 CPU(s) orderable: 1,2 chips
 Primary Cache: 32 KB I + 32 KB D on chip per core
 Secondary Cache: 256 KB I+D on chip per core
 L3 Cache: 25 MB I+D on chip per chip
 Other Cache: None
 Memory: 256 GB (16 x 16 GB 2Rx4 PC4-2133P-R)
 Disk Subsystem: 1 x 250 GB SATA, 7200 RPM
 Other Hardware: None

Software

Operating System: Red Hat Enterprise Linux Server release 6.5 (Santiago)
 Kernel 2.6.32-431.20.3.el6.x86_64
 Compiler: C/C++: Version 15.0.0.090 of Intel C++ Studio XE for Linux
 Auto Parallel: Yes
 File System: ext4
 System State: Run level 3 (multi-user)
 Base Pointers: 32/64-bit
 Peak Pointers: 32/64-bit
 Other Software: Microquill SmartHeap V8.1



SPEC CINT2006 Result

Copyright 2006-2015 Standard Performance Evaluation Corporation

NEC Corporation

SPECint2006 = **56.5**

Express5800/R120f-1E (Intel Xeon E5-2650 v3)

SPECint_base2006 = **54.0**

CPU2006 license: 9006

Test date: Apr-2015

Test sponsor: NEC Corporation

Hardware Availability: Jan-2015

Tested by: NEC Corporation

Software Availability: Jul-2014

Results Table

Benchmark	Base						Peak					
	Seconds	Ratio	Seconds	Ratio	Seconds	Ratio	Seconds	Ratio	Seconds	Ratio	Seconds	Ratio
400.perlbench	<u>275</u>	<u>35.5</u>	276	35.4	275	35.6	245	40.0	244	40.0	<u>244</u>	<u>40.0</u>
401.bzip2	445	21.7	<u>446</u>	<u>21.6</u>	449	21.5	443	21.8	443	21.8	<u>443</u>	<u>21.8</u>
403.gcc	263	30.6	262	30.8	<u>262</u>	<u>30.7</u>	258	31.2	<u>258</u>	<u>31.2</u>	259	31.1
429.mcf	<u>164</u>	<u>55.6</u>	164	55.7	165	55.2	<u>164</u>	<u>55.6</u>	164	55.7	165	55.2
445.gobmk	417	25.2	<u>417</u>	<u>25.1</u>	418	25.1	417	25.2	<u>417</u>	<u>25.1</u>	418	25.1
456.hammer	<u>157</u>	<u>59.4</u>	157	59.3	157	59.4	<u>157</u>	<u>59.4</u>	157	59.3	157	59.4
458.sjeng	412	29.4	412	29.4	<u>412</u>	<u>29.4</u>	410	29.5	<u>410</u>	<u>29.5</u>	411	29.5
462.libquantum	<u>4.03</u>	<u>5140</u>	4.03	5140	4.07	5100	<u>4.03</u>	<u>5140</u>	4.03	5140	4.07	5100
464.h264ref	519	42.7	<u>518</u>	<u>42.7</u>	517	42.8	519	42.7	<u>518</u>	<u>42.7</u>	517	42.8
471.omnetpp	211	29.6	214	29.1	<u>214</u>	<u>29.3</u>	146	42.8	<u>146</u>	<u>42.9</u>	146	42.9
473.astar	240	29.2	243	28.9	<u>240</u>	<u>29.2</u>	240	29.2	243	28.9	<u>240</u>	<u>29.2</u>
483.xalancbmk	120	57.7	120	57.5	<u>120</u>	<u>57.5</u>	120	57.7	120	57.5	<u>120</u>	<u>57.5</u>

Results appear in the order in which they were run. Bold underlined text indicates a median measurement.

Operating System Notes

Stack size set to unlimited using "ulimit -s unlimited"

Platform Notes

BIOS Settings:
Power Management Policy: Custom
Energy Performance: Performance
Patrol Scrub: Disabled
Hyper-Threading: Disabled

General Notes

Environment variables set by runspec before the start of the run:

KMP_AFFINITY = "granularity=fine,compact"

LD_LIBRARY_PATH = "/home/cpu2006/libs/32:/home/cpu2006/libs/64:/home/cpu2006/sh"

OMP_NUM_THREADS = "20"

Transparent Huge Pages enabled with:

echo always > /sys/kernel/mm/redhat_transparent_hugepage/enabled

Base Compiler Invocation

C benchmarks:

icc -m64

Continued on next page



SPEC CINT2006 Result

Copyright 2006-2015 Standard Performance Evaluation Corporation

NEC Corporation

SPECint2006 = 56.5

Express5800/R120f-1E (Intel Xeon E5-2650 v3)

SPECint_base2006 = 54.0

CPU2006 license: 9006

Test date: Apr-2015

Test sponsor: NEC Corporation

Hardware Availability: Jan-2015

Tested by: NEC Corporation

Software Availability: Jul-2014

Base Compiler Invocation (Continued)

C++ benchmarks:
icpc -m64

Base Portability Flags

400.perlbench: -DSPEC_CPU_LP64 -DSPEC_CPU_LINUX_X64
401.bzip2: -DSPEC_CPU_LP64
403.gcc: -DSPEC_CPU_LP64
429.mcf: -DSPEC_CPU_LP64
445.gobmk: -DSPEC_CPU_LP64
456.hmmer: -DSPEC_CPU_LP64
458.sjeng: -DSPEC_CPU_LP64
462.libquantum: -DSPEC_CPU_LP64 -DSPEC_CPU_LINUX
464.h264ref: -DSPEC_CPU_LP64
471.omnetpp: -DSPEC_CPU_LP64
473.astar: -DSPEC_CPU_LP64
483.xalancbmk: -DSPEC_CPU_LP64 -DSPEC_CPU_LINUX

Base Optimization Flags

C benchmarks:
-xCORE-AVX2 -ipo -O3 -no-prec-div -parallel -opt-prefetch -auto-p32
C++ benchmarks:
-xCORE-AVX2 -ipo -O3 -no-prec-div -opt-prefetch -auto-p32
-Wl,-z,muldefs -L/sh -lsmartheap64

Base Other Flags

C benchmarks:
403.gcc: -Dalloca=_alloca

Peak Compiler Invocation

C benchmarks (except as noted below):
icc -m64
400.perlbench: icc -m32 -L/opt/intel/composer_xe_2015/lib/ia32
C++ benchmarks (except as noted below):
icpc -m64

Continued on next page



SPEC CINT2006 Result

Copyright 2006-2015 Standard Performance Evaluation Corporation

NEC Corporation

SPECint2006 = 56.5

Express5800/R120f-1E (Intel Xeon E5-2650 v3)

SPECint_base2006 = 54.0

CPU2006 license: 9006

Test date: Apr-2015

Test sponsor: NEC Corporation

Hardware Availability: Jan-2015

Tested by: NEC Corporation

Software Availability: Jul-2014

Peak Compiler Invocation (Continued)

471.omnetpp: icpc -m32 -L/opt/intel/composer_xe_2015/lib/ia32

Peak Portability Flags

400.perlbench: -DSPEC_CPU_LINUX_IA32
 401.bzip2: -DSPEC_CPU_LP64
 403.gcc: -DSPEC_CPU_LP64
 429.mcf: -DSPEC_CPU_LP64
 445.gobmk: -DSPEC_CPU_LP64
 456.hmmr: -DSPEC_CPU_LP64
 458.sjeng: -DSPEC_CPU_LP64
 462.libquantum: -DSPEC_CPU_LP64 -DSPEC_CPU_LINUX
 464.h264ref: -DSPEC_CPU_LP64
 473.astar: -DSPEC_CPU_LP64
 483.xalancbmk: -DSPEC_CPU_LP64 -DSPEC_CPU_LINUX

Peak Optimization Flags

C benchmarks:

400.perlbench: -xCORE-AVX2(pass 2) -prof-gen(pass 1) -ipo(pass 2)
 -O3(pass 2) -no-prec-div(pass 2) -prof-use(pass 2)
 -opt-prefetch -ansi-alias

401.bzip2: -xCORE-AVX2(pass 2) -prof-gen(pass 1) -ipo(pass 2)
 -O3(pass 2) -no-prec-div -prof-use(pass 2) -auto-ilp32
 -opt-prefetch -ansi-alias

403.gcc: -xCORE-AVX2 -ipo -O3 -no-prec-div -inline-calloc
 -opt-malloc-options=3 -auto-ilp32

429.mcf: basepeak = yes

445.gobmk: basepeak = yes

456.hmmr: basepeak = yes

458.sjeng: -xCORE-AVX2(pass 2) -prof-gen(pass 1) -ipo(pass 2)
 -O3(pass 2) -no-prec-div(pass 2) -prof-use(pass 2)
 -unroll4

462.libquantum: basepeak = yes

464.h264ref: basepeak = yes

Continued on next page



SPEC CINT2006 Result

Copyright 2006-2015 Standard Performance Evaluation Corporation

NEC Corporation

SPECint2006 = 56.5

Express5800/R120f-1E (Intel Xeon E5-2650 v3)

SPECint_base2006 = 54.0

CPU2006 license: 9006

Test date: Apr-2015

Test sponsor: NEC Corporation

Hardware Availability: Jan-2015

Tested by: NEC Corporation

Software Availability: Jul-2014

Peak Optimization Flags (Continued)

C++ benchmarks:

471.omnetpp: -xCORE-AVX2(pass 2) -prof-gen(pass 1) -ipo(pass 2)
-O3(pass 2) -no-prec-div(pass 2) -prof-use(pass 2)
-opt-ra-region-strategy=block -ansi-alias
-Wl,-z,muldefs -L/sh -lsmartheap

473.astar: basepeak = yes

483.xalancbmk: basepeak = yes

Peak Other Flags

C benchmarks:

403.gcc: -Dalloca=_alloca

The flags file that was used to format this result can be browsed at

<http://www.spec.org/cpu2006/flags/Intel-ic15.0-official-linux64.html>

You can also download the XML flags source by saving the following link:

<http://www.spec.org/cpu2006/flags/Intel-ic15.0-official-linux64.xml>

SPEC and SPECint are registered trademarks of the Standard Performance Evaluation Corporation. All other brand and product names appearing in this result are trademarks or registered trademarks of their respective holders.

For questions about this result, please contact the tester.
For other inquiries, please contact webmaster@spec.org.

Tested with SPEC CPU2006 v1.2.
Report generated on Tue May 19 18:12:37 2015 by SPEC CPU2006 PS/PDF formatter v6932.
Originally published on 19 May 2015.