



SPEC® CINT2006 Result

Copyright 2006-2015 Standard Performance Evaluation Corporation

Huawei

SPECint®2006 = 55.9

Huawei RH2288H V3 (Intel Xeon E5-2658A v3)

SPECint_base2006 = 53.8

CPU2006 license: 3175

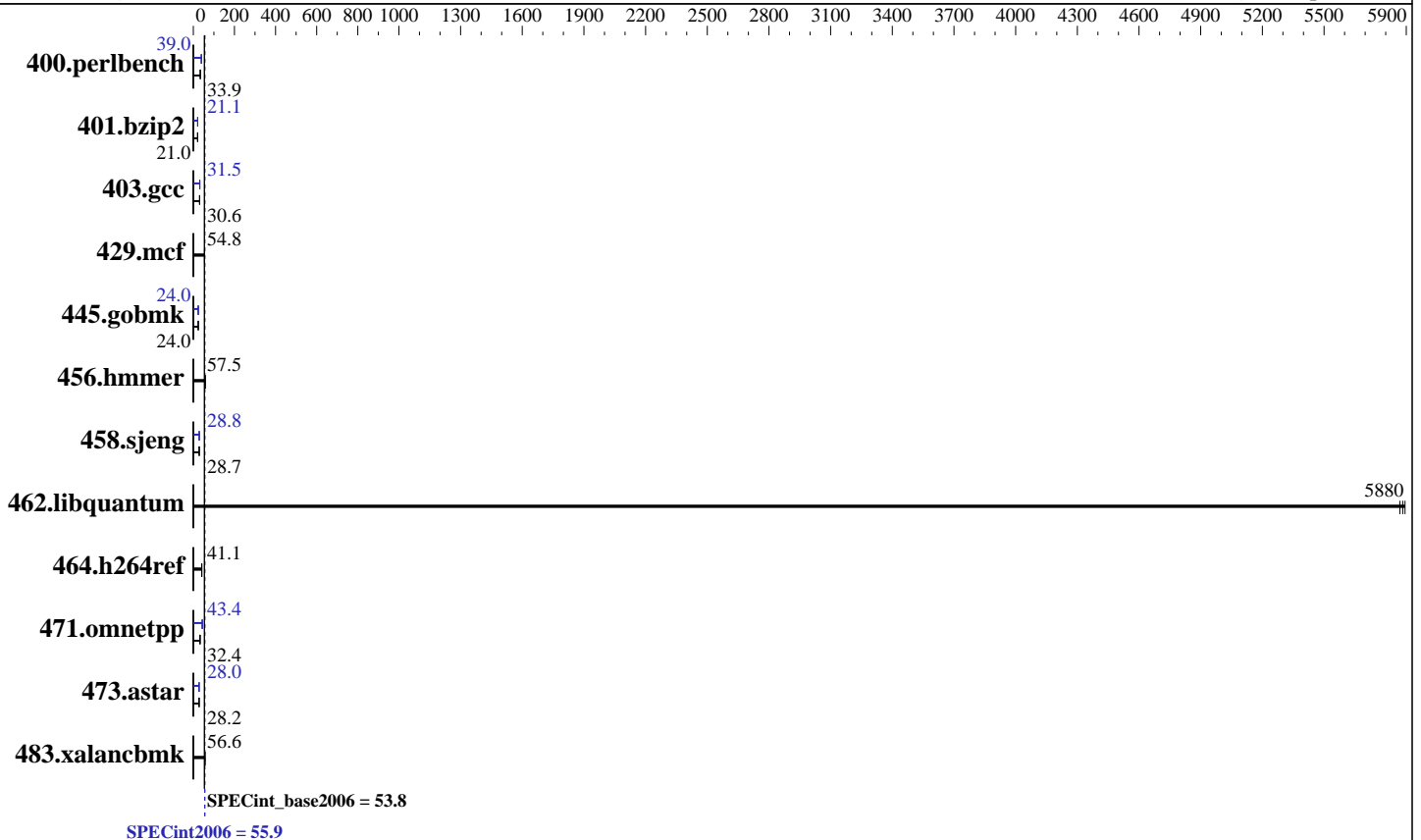
Test date: Mar-2015

Test sponsor: Huawei

Hardware Availability: Sep-2014

Tested by: Huawei

Software Availability: Sep-2014



Hardware

CPU Name: Intel Xeon E5-2658A v3
 CPU Characteristics: Intel Turbo Boost Technology up to 2.90 GHz
 CPU MHz: 2200
 FPU: Integrated
 CPU(s) enabled: 24 cores, 2 chips, 12 cores/chip
 CPU(s) orderable: 1,2 chip
 Primary Cache: 32 KB I + 32 KB D on chip per core
 Secondary Cache: 256 KB I+D on chip per core
 L3 Cache: 30 MB I+D on chip per chip
 Other Cache: None
 Memory: 256 GB (16 x 16 GB 2Rx4 PC4-2133P-R)
 Disk Subsystem: 1 x 500 GB SATA, 7200 RPM
 Other Hardware: None

Software

Operating System: Red Hat Enterprise Linux Server release 7.0 (Maipo)
 3.10.0-123.el7.x86_64
 Compiler: C/C++: Version 15.0.0.090 of Intel C++ Studio XE for Linux
 Auto Parallel: Yes
 File System: xfs
 System State: Run level 3 (multi-user)
 Base Pointers: 32/64-bit
 Peak Pointers: 32/64-bit
 Other Software: Microquill SmartHeap V10.0



SPEC CINT2006 Result

Copyright 2006-2015 Standard Performance Evaluation Corporation

Huawei

SPECint2006 = **55.9**

Huawei RH2288H V3 (Intel Xeon E5-2658A v3)

SPECint_base2006 = **53.8**

CPU2006 license: 3175
Test sponsor: Huawei
Tested by: Huawei

Test date: Mar-2015
Hardware Availability: Sep-2014
Software Availability: Sep-2014

Results Table

Benchmark	Base						Peak					
	Seconds	Ratio	Seconds	Ratio	Seconds	Ratio	Seconds	Ratio	Seconds	Ratio	Seconds	Ratio
400.perlbench	<u>288</u>	<u>33.9</u>	288	33.9	287	34.0	249	39.2	250	39.0	<u>250</u>	<u>39.0</u>
401.bzip2	461	20.9	461	21.0	<u>461</u>	<u>21.0</u>	<u>457</u>	<u>21.1</u>	458	21.1	457	21.1
403.gcc	262	30.7	264	30.5	<u>263</u>	<u>30.6</u>	<u>256</u>	<u>31.5</u>	255	31.5	256	31.4
429.mcf	167	54.6	<u>166</u>	<u>54.8</u>	166	54.8	167	54.6	<u>166</u>	<u>54.8</u>	166	54.8
445.gobmk	437	24.0	439	23.9	<u>437</u>	<u>24.0</u>	438	23.9	<u>438</u>	<u>24.0</u>	438	24.0
456.hammer	<u>162</u>	<u>57.5</u>	162	57.5	162	57.6	<u>162</u>	<u>57.5</u>	162	57.5	162	57.6
458.sjeng	<u>422</u>	<u>28.7</u>	422	28.7	421	28.7	419	28.8	<u>420</u>	<u>28.8</u>	420	28.8
462.libquantum	3.52	5890	<u>3.52</u>	<u>5880</u>	3.53	5870	3.52	5890	<u>3.52</u>	<u>5880</u>	3.53	5870
464.h264ref	538	41.2	541	40.9	<u>538</u>	<u>41.1</u>	538	41.2	541	40.9	<u>538</u>	<u>41.1</u>
471.omnetpp	189	33.1	193	32.4	<u>193</u>	<u>32.4</u>	<u>144</u>	<u>43.4</u>	143	43.7	144	43.4
473.astar	249	28.2	251	28.0	<u>249</u>	<u>28.2</u>	252	27.9	<u>251</u>	<u>28.0</u>	250	28.0
483.xalancbmk	122	56.5	122	56.6	<u>122</u>	<u>56.6</u>	122	56.5	122	56.6	<u>122</u>	<u>56.6</u>

Results appear in the order in which they were run. Bold underlined text indicates a median measurement.

Submit Notes

The config file option 'submit' was used.

Operating System Notes

Stack size set to unlimited using "ulimit -s unlimited"

Platform Notes

```

BIOS configuration:
Set Power Efficiency Mode to Custom
Set Snoop Mode to ES
Set Hyper-Threading to Disabled
Set Patrol Scrub to Disable
Baseboard Management Controller used to adjust the fan speed to 100%
Sysinfo program /spec/config/sysinfo.rev6914
$Rev: 6914 $ $Date:: 2014-06-25 #$ e3fbb8667b5a285932ceab81e28219e1
running on localhost.localdomain Fri Mar 27 17:16:18 2015

```

This section contains SUT (System Under Test) info as seen by some common utilities. To remove or add to this section, see: <http://www.spec.org/cpu2006/Docs/config.html#sysinfo>

```

From /proc/cpuinfo
model name : Intel(R) Xeon(R) CPU E5-2658A v3 @ 2.20GHz
2 "physical id"s (chips)
24 "processors"
cores, siblings (Caution: counting these is hw and system dependent. The
Continued on next page

```



SPEC CINT2006 Result

Copyright 2006-2015 Standard Performance Evaluation Corporation

Huawei

SPECint2006 = 55.9

Huawei RH2288H V3 (Intel Xeon E5-2658A v3)

SPECint_base2006 = 53.8

CPU2006 license: 3175
Test sponsor: Huawei
Tested by: Huawei

Test date: Mar-2015
Hardware Availability: Sep-2014
Software Availability: Sep-2014

Platform Notes (Continued)

following excerpts from /proc/cpuinfo might not be reliable. Use with caution.)

```
cpu cores : 12
siblings  : 12
physical 0: cores 0 1 2 3 4 5 8 9 10 11 12 13
physical 1: cores 0 1 2 3 4 5 8 9 10 11 12 13
cache size : 30720 KB
```

From /proc/meminfo

```
MemTotal:      263720560 kB
HugePages_Total:    0
Hugepagesize:    2048 kB
```

From /etc/*release* /etc/*version*

```
os-release:
NAME="Red Hat Enterprise Linux Server"
VERSION="7.0 (Maipo)"
ID="rhel"
ID_LIKE="fedora"
VERSION_ID="7.0"
PRETTY_NAME="Red Hat Enterprise Linux Server 7.0 (Maipo)"
ANSI_COLOR="0;31"
CPE_NAME="cpe:/o:redhat:enterprise_linux:7.0:GA:server"
redhat-release: Red Hat Enterprise Linux Server release 7.0 (Maipo)
system-release: Red Hat Enterprise Linux Server release 7.0 (Maipo)
system-release-cpe: cpe:/o:redhat:enterprise_linux:7.0:ga:server
```

uname -a:

```
Linux localhost.localdomain 3.10.0-123.el7.x86_64 #1 SMP Mon May 5 11:16:57
EDT 2014 x86_64 x86_64 x86_64 GNU/Linux
```

run-level 3 Mar 27 11:10

SPEC is set to: /spec

```
Filesystem      Type  Size  Used Avail Use% Mounted on
/dev/sda2        xfs   440G  9.4G  430G   3% /
```

Additional information from dmidecode:

Warning: Use caution when you interpret this section. The 'dmidecode' program reads system data which is "intended to allow hardware to be accurately determined", but the intent may not be met, as there are frequent changes to hardware, firmware, and the "DMTF SMBIOS" standard.

BIOS Insyde Corp. 1.19 10/10/2014

Memory:

```
8x Micron 36ASF2G72PZ-2G1A2 16 GB 1 rank 2133 MHz
8x Micron 36ASF2G72PZ-2G1A2 16 GB 2 rank 2133 MHz
8x NO DIMM NO DIMM 3 rank
```

(End of data from sysinfo program)



SPEC CINT2006 Result

Copyright 2006-2015 Standard Performance Evaluation Corporation

Huawei

SPECint2006 = 55.9

Huawei RH2288H V3 (Intel Xeon E5-2658A v3)

SPECint_base2006 = 53.8

CPU2006 license: 3175

Test sponsor: Huawei

Tested by: Huawei

Test date: Mar-2015

Hardware Availability: Sep-2014

Software Availability: Sep-2014

General Notes

Environment variables set by runspec before the start of the run:

```
KMP_AFFINITY = "granularity=fine,scatter"  
LD_LIBRARY_PATH = "/spec/libs/32:/spec/libs/64:/spec/sh"  
OMP_NUM_THREADS = "24"
```

Binaries compiled on a system with 1x Core i5-4670K CPU + 16GB memory using RedHat EL 7.0

Transparent Huge Pages enabled with:

```
echo always > /sys/kernel/mm/transparent_hugepage/enabled
```

Base Compiler Invocation

C benchmarks:

```
icc -m64
```

C++ benchmarks:

```
icpc -m64
```

Base Portability Flags

```
400.perlbench: -DSPEC_CPU_LP64 -DSPEC_CPU_LINUX_X64  
401.bzip2: -DSPEC_CPU_LP64  
403.gcc: -DSPEC_CPU_LP64  
429.mcf: -DSPEC_CPU_LP64  
445.gobmk: -DSPEC_CPU_LP64  
456.hmmer: -DSPEC_CPU_LP64  
458.sjeng: -DSPEC_CPU_LP64  
462.libquantum: -DSPEC_CPU_LP64 -DSPEC_CPU_LINUX  
464.h264ref: -DSPEC_CPU_LP64  
471.omnetpp: -DSPEC_CPU_LP64  
473.astar: -DSPEC_CPU_LP64  
483.xalancbmk: -DSPEC_CPU_LP64 -DSPEC_CPU_LINUX
```

Base Optimization Flags

C benchmarks:

```
-xCORE-AVX2 -ipo -O3 -no-prec-div -parallel -opt-prefetch -auto-p32
```

C++ benchmarks:

```
-xCORE-AVX2 -ipo -O3 -no-prec-div -opt-prefetch -auto-p32  
-Wl,-z,muldefs -L/sh -lsmarthheap64
```



SPEC CINT2006 Result

Copyright 2006-2015 Standard Performance Evaluation Corporation

Huawei

SPECint2006 = 55.9

Huawei RH2288H V3 (Intel Xeon E5-2658A v3)

SPECint_base2006 = 53.8

CPU2006 license: 3175
Test sponsor: Huawei
Tested by: Huawei

Test date: Mar-2015
Hardware Availability: Sep-2014
Software Availability: Sep-2014

Base Other Flags

C benchmarks:

403.gcc: -Dalloca=_alloca

Peak Compiler Invocation

C benchmarks (except as noted below):

icc -m64

400.perlbench: icc -m32 -L/opt/intel/composer_xe_2015/lib/ia32

445.gobmk: icc -m32 -L/opt/intel/composer_xe_2015/lib/ia32

C++ benchmarks (except as noted below):

icpc -m64

471.omnetpp: icpc -m32 -L/opt/intel/composer_xe_2015/lib/ia32

Peak Portability Flags

400.perlbench: -DSPEC_CPU_LINUX_IA32
401.bzip2: -DSPEC_CPU_LP64
403.gcc: -DSPEC_CPU_LP64
429.mcf: -DSPEC_CPU_LP64
456.hmmer: -DSPEC_CPU_LP64
458.sjeng: -DSPEC_CPU_LP64
462.libquantum: -DSPEC_CPU_LP64 -DSPEC_CPU_LINUX
464.h264ref: -DSPEC_CPU_LP64
473.astar: -DSPEC_CPU_LP64
483.xalancbmk: -DSPEC_CPU_LP64 -DSPEC_CPU_LINUX

Peak Optimization Flags

C benchmarks:

400.perlbench: -xCORE-AVX2(pass 2) -prof-gen(pass 1) -ipo(pass 2)
-O3(pass 2) -no-prec-div(pass 2) -prof-use(pass 2)
-opt-prefetch -ansi-alias

401.bzip2: -xCORE-AVX2(pass 2) -prof-gen(pass 1) -ipo(pass 2)
-O3(pass 2) -no-prec-div -prof-use(pass 2) -auto-ilp32
-opt-prefetch -ansi-alias

Continued on next page



SPEC CINT2006 Result

Copyright 2006-2015 Standard Performance Evaluation Corporation

Huawei

SPECint2006 = 55.9

Huawei RH2288H V3 (Intel Xeon E5-2658A v3)

SPECint_base2006 = 53.8

CPU2006 license: 3175

Test date: Mar-2015

Test sponsor: Huawei

Hardware Availability: Sep-2014

Tested by: Huawei

Software Availability: Sep-2014

Peak Optimization Flags (Continued)

403.gcc: -xCORE-AVX2 -ipo -O3 -no-prec-div -inline-calloc
-opt-malloc-options=3 -auto-ilp32

429.mcf: basepeak = yes

445.gobmk: -xCORE-AVX2(pass 2) -prof-gen(pass 1) -prof-use(pass 2)
-ansi-alias

456.hmmer: basepeak = yes

458.sjeng: -xCORE-AVX2(pass 2) -prof-gen(pass 1) -ipo(pass 2)
-O3(pass 2) -no-prec-div(pass 2) -prof-use(pass 2)
-unroll4

462.libquantum: basepeak = yes

464.h264ref: basepeak = yes

C++ benchmarks:

471.omnetpp: -xCORE-AVX2(pass 2) -prof-gen(pass 1) -ipo(pass 2)
-O3(pass 2) -no-prec-div(pass 2) -prof-use(pass 2)
-opt-ra-region-strategy=block -ansi-alias
-Wl,-z,muldefs -L/sh -lsmartheap

473.astar: -xCORE-AVX2 -ipo -O3 -no-prec-div -opt-prefetch
-auto-p32 -Wl,-z,muldefs -L/sh -lsmartheap64

483.xalancbmk: basepeak = yes

Peak Other Flags

C benchmarks:

403.gcc: -Dalloca=_alloca

The flags files that were used to format this result can be browsed at

<http://www.spec.org/cpu2006/flags/Intel-ic15.0-official-linux64.html>

<http://www.spec.org/cpu2006/flags/Huawei-Platform-Settings-HASWELL-V1.4.html>

You can also download the XML flags sources by saving the following links:

<http://www.spec.org/cpu2006/flags/Intel-ic15.0-official-linux64.xml>

<http://www.spec.org/cpu2006/flags/Huawei-Platform-Settings-HASWELL-V1.4.xml>



SPEC CINT2006 Result

Copyright 2006-2015 Standard Performance Evaluation Corporation

Huawei

SPECint2006 = 55.9

Huawei RH2288H V3 (Intel Xeon E5-2658A v3)

SPECint_base2006 = 53.8

CPU2006 license: 3175

Test sponsor: Huawei

Tested by: Huawei

Test date: Mar-2015

Hardware Availability: Sep-2014

Software Availability: Sep-2014

SPEC and SPECint are registered trademarks of the Standard Performance Evaluation Corporation. All other brand and product names appearing in this result are trademarks or registered trademarks of their respective holders.

For questions about this result, please contact the tester.
For other inquiries, please contact webmaster@spec.org.

Tested with SPEC CPU2006 v1.2.
Report generated on Tue Apr 21 18:22:12 2015 by SPEC CPU2006 PS/PDF formatter v6932.
Originally published on 21 April 2015.