



SPEC[®] CINT2006 Result

Copyright 2006-2015 Standard Performance Evaluation Corporation

Fujitsu

SPECint[®]2006 = **61.4**

PRIMERGY BX2560 M1, Intel Xeon E5-2695 v3, 2.3 GHz

SPECint_base2006 = **59.3**

CPU2006 license: 19

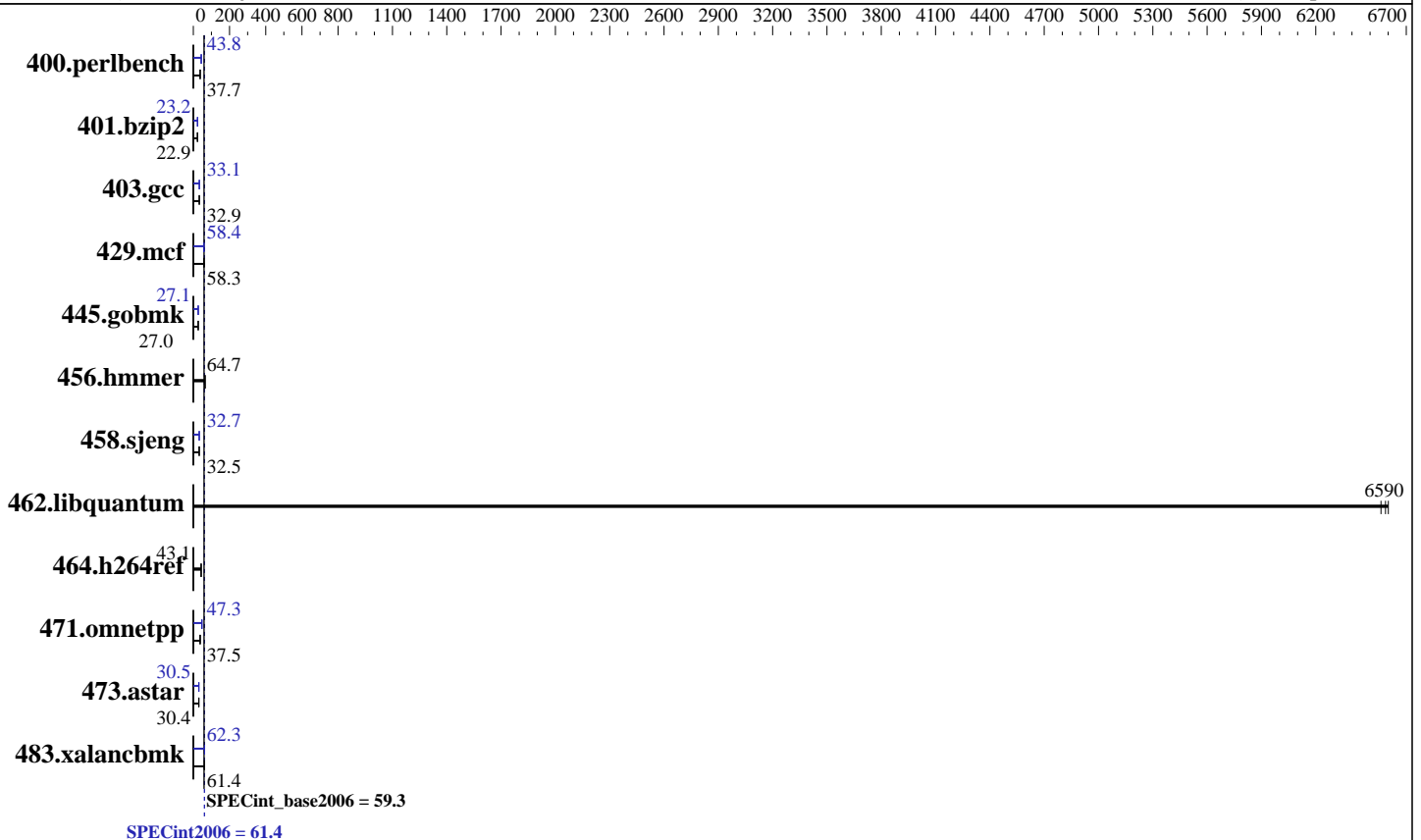
Test sponsor: Fujitsu

Tested by: Fujitsu

Test date: Jan-2015

Hardware Availability: Sep-2014

Software Availability: Sep-2014



Hardware

CPU Name: Intel Xeon E5-2695 v3
 CPU Characteristics: Intel Turbo Boost Technology up to 3.30 GHz
 CPU MHz: 2300
 FPU: Integrated
 CPU(s) enabled: 28 cores, 2 chips, 14 cores/chip, 2 threads/core
 CPU(s) orderable: 1,2 chip
 Primary Cache: 32 KB I + 32 KB D on chip per core
 Secondary Cache: 256 KB I+D on chip per core
 L3 Cache: 35 MB I+D on chip per chip
 Other Cache: None
 Memory: 256 GB (16 x 16 GB 2Rx4 PC4-2133P-R)
 Disk Subsystem: 1 x SATA, 500 GB, 7200 RPM
 Other Hardware: None

Software

Operating System: Red Hat Enterprise Linux Server release 7.0 (Maipo)
 Kernel 3.10.0-123.8.1.el7.x86_64
 Compiler: C/C++: Version 15.0.0.090 of Intel C++ Studio XE for Linux
 Auto Parallel: Yes
 File System: xfs
 System State: Run level 3 (multi-user)
 Base Pointers: 32/64-bit
 Peak Pointers: 32/64-bit
 Other Software: Microquill SmartHeap V10.0



SPEC CINT2006 Result

Copyright 2006-2015 Standard Performance Evaluation Corporation

Fujitsu

SPECint2006 = **61.4**

PRIMERGY BX2560 M1, Intel Xeon E5-2695 v3, 2.3 GHz

SPECint_base2006 = **59.3**

CPU2006 license: 19
Test sponsor: Fujitsu
Tested by: Fujitsu

Test date: Jan-2015
Hardware Availability: Sep-2014
Software Availability: Sep-2014

Results Table

Benchmark	Base						Peak					
	Seconds	Ratio	Seconds	Ratio	Seconds	Ratio	Seconds	Ratio	Seconds	Ratio	Seconds	Ratio
400.perlbench	259	37.7	260	37.6	<u>259</u>	<u>37.7</u>	223	43.8	224	43.6	<u>223</u>	<u>43.8</u>
401.bzip2	<u>422</u>	<u>22.9</u>	419	23.0	424	22.8	417	23.1	<u>417</u>	<u>23.2</u>	417	23.2
403.gcc	244	33.0	244	32.9	<u>244</u>	<u>32.9</u>	242	33.3	<u>243</u>	<u>33.1</u>	243	33.1
429.mcf	<u>156</u>	<u>58.3</u>	152	60.1	157	58.2	<u>156</u>	<u>58.4</u>	156	58.5	157	58.2
445.gobmk	<u>389</u>	<u>27.0</u>	390	26.9	388	27.0	388	27.0	<u>388</u>	<u>27.1</u>	388	27.1
456.hammer	144	64.8	144	64.6	<u>144</u>	<u>64.7</u>	144	64.8	144	64.6	<u>144</u>	<u>64.7</u>
458.sjeng	<u>373</u>	<u>32.5</u>	372	32.5	373	32.5	370	32.7	<u>370</u>	<u>32.7</u>	370	32.7
462.libquantum	<u>3.15</u>	<u>6590</u>	3.16	6560	3.14	6600	<u>3.15</u>	<u>6590</u>	3.16	6560	3.14	6600
464.h264ref	512	43.2	<u>513</u>	<u>43.1</u>	513	43.1	512	43.2	<u>513</u>	<u>43.1</u>	513	43.1
471.omnetpp	161	38.8	<u>167</u>	<u>37.5</u>	171	36.5	132	47.4	132	47.2	<u>132</u>	<u>47.3</u>
473.astar	232	30.2	228	30.7	<u>231</u>	<u>30.4</u>	227	30.9	232	30.2	<u>230</u>	<u>30.5</u>
483.xalancbmk	113	61.1	111	62.1	<u>112</u>	<u>61.4</u>	111	62.3	111	62.2	<u>111</u>	<u>62.3</u>

Results appear in the order in which they were run. Bold underlined text indicates a median measurement.

Submit Notes

The config file option 'submit' was used.

Operating System Notes

Stack size set to unlimited using "ulimit -s unlimited"

Platform Notes

BIOS configuration:
Energy Performance = Performance
Utilization Profile = Unbalanced
QPI snoop mode: Home Snoop
COD Enable = Disabled, Early Snoop = Disabled
CPU C1E Support = Disabled

General Notes

Environment variables set by runspec before the start of the run:
KMP_AFFINITY = "granularity=fine,scatter"
LD_LIBRARY_PATH = "/home/SPECcpu2006/libs/32:/home/SPECcpu2006/libs/64:/home/SPECcpu2006/sh"
OMP_NUM_THREADS = "28"

Binaries compiled on a system with 1x Core i5-4670K CPU + 16GB memory using RedHat EL 7.0

For information about Fujitsu please visit: <http://www.fujitsu.com>



SPEC CINT2006 Result

Copyright 2006-2015 Standard Performance Evaluation Corporation

Fujitsu

SPECint2006 = 61.4

PRIMERGY BX2560 M1, Intel Xeon E5-2695 v3, 2.3 GHz

SPECint_base2006 = 59.3

CPU2006 license: 19
Test sponsor: Fujitsu
Tested by: Fujitsu

Test date: Jan-2015
Hardware Availability: Sep-2014
Software Availability: Sep-2014

Base Compiler Invocation

C benchmarks:
icc -m64

C++ benchmarks:
icpc -m64

Base Portability Flags

400.perlbench: -DSPEC_CPU_LP64 -DSPEC_CPU_LINUX_X64
401.bzip2: -DSPEC_CPU_LP64
403.gcc: -DSPEC_CPU_LP64
429.mcf: -DSPEC_CPU_LP64
445.gobmk: -DSPEC_CPU_LP64
456.hmmer: -DSPEC_CPU_LP64
458.sjeng: -DSPEC_CPU_LP64
462.libquantum: -DSPEC_CPU_LP64 -DSPEC_CPU_LINUX
464.h264ref: -DSPEC_CPU_LP64
471.omnetpp: -DSPEC_CPU_LP64
473.astar: -DSPEC_CPU_LP64
483.xalancbmk: -DSPEC_CPU_LP64 -DSPEC_CPU_LINUX

Base Optimization Flags

C benchmarks:
-xCORE-AVX2 -ipo -O3 -no-prec-div -parallel -opt-prefetch -auto-p32

C++ benchmarks:
-xCORE-AVX2 -ipo -O3 -no-prec-div -opt-prefetch -auto-p32
-Wl,-z,muldefs -L/sh -lsmartheap64

Base Other Flags

C benchmarks:
403.gcc: -Dalloca=_alloca

Peak Compiler Invocation

C benchmarks (except as noted below):
icc -m64

Continued on next page



SPEC CINT2006 Result

Copyright 2006-2015 Standard Performance Evaluation Corporation

Fujitsu

SPECint2006 = 61.4

PRIMERGY BX2560 M1, Intel Xeon E5-2695 v3, 2.3 GHz

SPECint_base2006 = 59.3

CPU2006 license: 19

Test date: Jan-2015

Test sponsor: Fujitsu

Hardware Availability: Sep-2014

Tested by: Fujitsu

Software Availability: Sep-2014

Peak Compiler Invocation (Continued)

400.perlbench: `icc -m32 -L/opt/intel/composer_xe_2015/lib/ia32`

445.gobmk: `icc -m32 -L/opt/intel/composer_xe_2015/lib/ia32`

C++ benchmarks (except as noted below):

`icpc -m32 -L/opt/intel/composer_xe_2015/lib/ia32`

473.astar: `icpc -m64`

Peak Portability Flags

400.perlbench: `-DSPEC_CPU_LINUX_IA32`
 401.bzip2: `-DSPEC_CPU_LP64`
 403.gcc: `-DSPEC_CPU_LP64`
 429.mcf: `-DSPEC_CPU_LP64`
 456.hmmmer: `-DSPEC_CPU_LP64`
 458.sjeng: `-DSPEC_CPU_LP64`
 462.libquantum: `-DSPEC_CPU_LP64 -DSPEC_CPU_LINUX`
 464.h264ref: `-DSPEC_CPU_LP64`
 473.astar: `-DSPEC_CPU_LP64`
 483.xalancbmk: `-DSPEC_CPU_LINUX`

Peak Optimization Flags

C benchmarks:

400.perlbench: `-xCORE-AVX2(pass 2) -prof-gen(pass 1) -ipo(pass 2) -O3(pass 2) -no-prec-div(pass 2) -prof-use(pass 2) -opt-prefetch -ansi-alias`

401.bzip2: `-xCORE-AVX2(pass 2) -prof-gen(pass 1) -ipo(pass 2) -O3(pass 2) -no-prec-div -prof-use(pass 2) -auto-ilp32 -opt-prefetch -ansi-alias`

403.gcc: `-xCORE-AVX2 -ipo -O3 -no-prec-div -inline-calloc -opt-malloc-options=3 -auto-ilp32`

429.mcf: `-xCORE-AVX2 -ipo -O3 -no-prec-div -parallel -opt-prefetch -auto-p32`

445.gobmk: `-xCORE-AVX2(pass 2) -prof-gen(pass 1) -prof-use(pass 2) -ansi-alias`

456.hmmmer: `basepeak = yes`

Continued on next page



SPEC CINT2006 Result

Copyright 2006-2015 Standard Performance Evaluation Corporation

Fujitsu

SPECint2006 = 61.4

PRIMERGY BX2560 M1, Intel Xeon E5-2695 v3, 2.3 GHz

SPECint_base2006 = 59.3

CPU2006 license: 19

Test sponsor: Fujitsu

Tested by: Fujitsu

Test date: Jan-2015

Hardware Availability: Sep-2014

Software Availability: Sep-2014

Peak Optimization Flags (Continued)

458.sjeng: -xCORE-AVX2(pass 2) -prof-gen(pass 1) -ipo(pass 2)
-O3(pass 2) -no-prec-div(pass 2) -prof-use(pass 2)
-unroll4

462.libquantum: basepeak = yes

464.h264ref: basepeak = yes

C++ benchmarks:

471.omnetpp: -xCORE-AVX2(pass 2) -prof-gen(pass 1) -ipo(pass 2)
-O3(pass 2) -no-prec-div(pass 2) -prof-use(pass 2)
-opt-ra-region-strategy=block -ansi-alias
-Wl,-z,muldefs -L/sh -lsmartheap

473.astar: -xCORE-AVX2 -ipo -O3 -no-prec-div -opt-prefetch
-auto-p32 -Wl,-z,muldefs -L/sh -lsmartheap64

483.xalancbmk: -xCORE-AVX2 -ipo -O3 -no-prec-div -opt-prefetch
-ansi-alias -Wl,-z,muldefs -L/sh -lsmartheap

Peak Other Flags

C benchmarks:

403.gcc: -Dalloca=_alloca

The flags files that were used to format this result can be browsed at

<http://www.spec.org/cpu2006/flags/Intel-ic15.0-official-linux64.html>

<http://www.spec.org/cpu2006/flags/Fujitsu-Platform-Settings-V1.2-HSW-RevA.html>

You can also download the XML flags sources by saving the following links:

<http://www.spec.org/cpu2006/flags/Intel-ic15.0-official-linux64.xml>

<http://www.spec.org/cpu2006/flags/Fujitsu-Platform-Settings-V1.2-HSW-RevA.xml>

SPEC and SPECint are registered trademarks of the Standard Performance Evaluation Corporation. All other brand and product names appearing in this result are trademarks or registered trademarks of their respective holders.

For questions about this result, please contact the tester.
For other inquiries, please contact webmaster@spec.org.

Tested with SPEC CPU2006 v1.2.

Report generated on Tue Mar 10 16:04:01 2015 by SPEC CPU2006 PS/PDF formatter v6932.

Originally published on 10 March 2015.