



SPEC[®] CINT2006 Result

Copyright 2006-2014 Standard Performance Evaluation Corporation

Fujitsu

SPECint[®]2006 = **51.9**

PRIMERGY RX300 S8, Intel Xeon E5-2660 v2, 2.20 GHz

SPECint_base2006 = **48.1**

CPU2006 license: 19

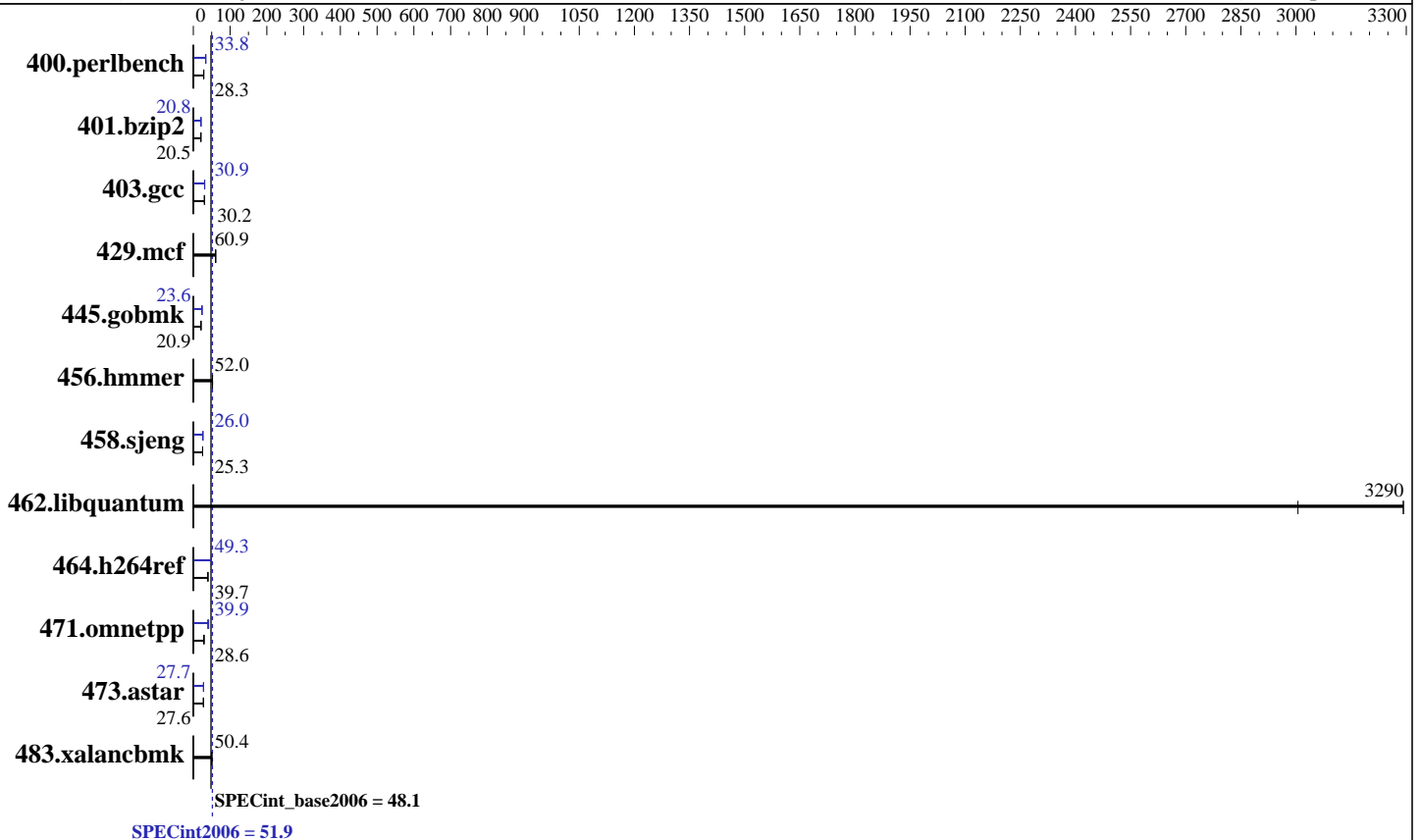
Test sponsor: Fujitsu

Tested by: Fujitsu

Test date: Sep-2013

Hardware Availability: Oct-2013

Software Availability: Sep-2013



Hardware

CPU Name: Intel Xeon E5-2660 v2
 CPU Characteristics: Intel Turbo Boost Technology up to 3.00 GHz
 CPU MHz: 2200
 FPU: Integrated
 CPU(s) enabled: 20 cores, 2 chips, 10 cores/chip, 2 threads/core
 CPU(s) orderable: 1,2 chips
 Primary Cache: 32 KB I + 32 KB D on chip per core
 Secondary Cache: 256 KB I+D on chip per core
 L3 Cache: 25 MB I+D on chip per chip
 Other Cache: None
 Memory: 256 GB (16 x 16 GB 2Rx4 PC3-14900R-13, ECC)
 Disk Subsystem: 1 x SATA, 450 GB, 15000 RPM
 Other Hardware: None

Software

Operating System: Red Hat Enterprise Linux Server release 6.4 (Santiago)
 2.6.32-358.11.1.el6.x86_64
 Compiler: C/C++: Version 14.0.0.080 of Intel C++ Studio XE for Linux
 Auto Parallel: Yes
 File System: ext4
 System State: Run level 3 (multi-user)
 Base Pointers: 32/64-bit
 Peak Pointers: 32/64-bit
 Other Software: Microquill SmartHeap V10.0



SPEC CINT2006 Result

Copyright 2006-2014 Standard Performance Evaluation Corporation

Fujitsu

SPECint2006 = **51.9**

PRIMERGY RX300 S8, Intel Xeon E5-2660 v2, 2.20 GHz

SPECint_base2006 = **48.1**

CPU2006 license: 19
Test sponsor: Fujitsu
Tested by: Fujitsu

Test date: Sep-2013
Hardware Availability: Oct-2013
Software Availability: Sep-2013

Results Table

Benchmark	Base						Peak					
	Seconds	Ratio	Seconds	Ratio	Seconds	Ratio	Seconds	Ratio	Seconds	Ratio	Seconds	Ratio
400.perlbench	345	28.3	345	28.3	345	28.3	289	33.8	289	33.8	290	33.7
401.bzip2	470	20.5	469	20.6	470	20.5	463	20.8	464	20.8	463	20.8
403.gcc	265	30.3	266	30.2	266	30.2	261	30.9	261	30.9	261	30.9
429.mcf	150	60.9	152	60.1	149	61.0	150	60.9	152	60.1	149	61.0
445.gobmk	502	20.9	502	20.9	503	20.9	444	23.6	444	23.6	444	23.6
456.hammer	178	52.3	180	51.9	179	52.0	178	52.3	180	51.9	179	52.0
458.sjeng	478	25.3	478	25.3	478	25.3	465	26.0	465	26.0	465	26.0
462.libquantum	6.89	3010	6.29	3290	6.29	3290	6.89	3010	6.29	3290	6.29	3290
464.h264ref	557	39.7	558	39.7	558	39.7	449	49.3	450	49.2	449	49.3
471.omnetpp	219	28.6	220	28.4	210	29.7	157	39.7	150	41.7	157	39.9
473.astar	257	27.3	254	27.6	254	27.7	253	27.7	252	27.9	254	27.6
483.xalancbmk	137	50.4	138	50.1	137	50.4	137	50.4	138	50.1	137	50.4

Results appear in the order in which they were run. Bold underlined text indicates a median measurement.

Submit Notes

The config file option 'submit' was used.

Operating System Notes

Stack size set to unlimited using "ulimit -s unlimited"

Platform Notes

BIOS configuration:
Energy Performance = Performance
Utilization Profile = Unbalanced

General Notes

Environment variables set by runspec before the start of the run:
KMP_AFFINITY = "granularity=fine,compact,1,0"
LD_LIBRARY_PATH = "/SPECcpu2006/libs/32:/SPECcpu2006/libs/64:/SPECcpu2006/sh"
OMP_NUM_THREADS = "20"

Binaries compiled on a system with 1x Core i7-860 CPU + 8GB
memory using RedHat EL 6.4
Transparent Huge Pages enabled with:
echo always > /sys/kernel/mm/redhat_transparent_hugepage/enabled
runspec command invoked through numactl i.e.:
numactl --interleave=all runspec <etc>

Continued on next page



SPEC CINT2006 Result

Copyright 2006-2014 Standard Performance Evaluation Corporation

Fujitsu

SPECint2006 = 51.9

PRIMERGY RX300 S8, Intel Xeon E5-2660 v2, 2.20 GHz

SPECint_base2006 = 48.1

CPU2006 license: 19
Test sponsor: Fujitsu
Tested by: Fujitsu

Test date: Sep-2013
Hardware Availability: Oct-2013
Software Availability: Sep-2013

General Notes (Continued)

For information about Fujitsu please visit: <http://www.fujitsu.com>

Base Compiler Invocation

C benchmarks:
icc -m64

C++ benchmarks:
icpc -m64

Base Portability Flags

400.perlbench: -DSPEC_CPU_LP64 -DSPEC_CPU_LINUX_X64
401.bzip2: -DSPEC_CPU_LP64
403.gcc: -DSPEC_CPU_LP64
429.mcf: -DSPEC_CPU_LP64
445.gobmk: -DSPEC_CPU_LP64
456.hmmer: -DSPEC_CPU_LP64
458.sjeng: -DSPEC_CPU_LP64
462.libquantum: -DSPEC_CPU_LP64 -DSPEC_CPU_LINUX
464.h264ref: -DSPEC_CPU_LP64
471.omnetpp: -DSPEC_CPU_LP64
473.astar: -DSPEC_CPU_LP64
483.xalanbmk: -DSPEC_CPU_LP64 -DSPEC_CPU_LINUX

Base Optimization Flags

C benchmarks:
-xAVX -ipo -O3 -no-prec-div -parallel -opt-prefetch -auto-p32

C++ benchmarks:
-xAVX -ipo -O3 -no-prec-div -opt-prefetch -auto-p32 -Wl,-z,muldefs
-L/sh -lsmartheap64

Base Other Flags

C benchmarks:
403.gcc: -Dalloca=_alloca



SPEC CINT2006 Result

Copyright 2006-2014 Standard Performance Evaluation Corporation

Fujitsu

SPECint2006 = 51.9

PRIMERGY RX300 S8, Intel Xeon E5-2660 v2, 2.20 GHz

SPECint_base2006 = 48.1

CPU2006 license: 19

Test date: Sep-2013

Test sponsor: Fujitsu

Hardware Availability: Oct-2013

Tested by: Fujitsu

Software Availability: Sep-2013

Peak Compiler Invocation

C benchmarks (except as noted below):

icc -m64

400.perlbench: icc -m32

445.gobmk: icc -m32

464.h264ref: icc -m32

C++ benchmarks (except as noted below):

icpc -m64

471.omnetpp: icpc -m32

Peak Portability Flags

400.perlbench: -DSPEC_CPU_LINUX_IA32
401.bzip2: -DSPEC_CPU_LP64
403.gcc: -DSPEC_CPU_LP64
429.mcf: -DSPEC_CPU_LP64
456.hmmr: -DSPEC_CPU_LP64
458.sjeng: -DSPEC_CPU_LP64
462.libquantum: -DSPEC_CPU_LP64 -DSPEC_CPU_LINUX
473.astar: -DSPEC_CPU_LP64
483.xalancbmk: -DSPEC_CPU_LP64 -DSPEC_CPU_LINUX

Peak Optimization Flags

C benchmarks:

400.perlbench: -xAVX(pass 2) -prof-gen(pass 1) -ipo(pass 2) -O3(pass 2)
-no-prec-div(pass 2) -prof-use(pass 2) -opt-prefetch
-ansi-alias
401.bzip2: -xAVX(pass 2) -prof-gen(pass 1) -ipo(pass 2) -O3(pass 2)
-no-prec-div -prof-use(pass 2) -auto-ilp32 -opt-prefetch
-ansi-alias
403.gcc: -xAVX -ipo -O3 -no-prec-div -inline-calloc
-opt-malloc-options=3 -auto-ilp32
429.mcf: basepeak = yes
445.gobmk: -xAVX(pass 2) -prof-gen(pass 1) -prof-use(pass 2)
-ansi-alias

Continued on next page



SPEC CINT2006 Result

Copyright 2006-2014 Standard Performance Evaluation Corporation

Fujitsu

SPECint2006 = 51.9

PRIMERGY RX300 S8, Intel Xeon E5-2660 v2, 2.20 GHz

SPECint_base2006 = 48.1

CPU2006 license: 19

Test date: Sep-2013

Test sponsor: Fujitsu

Hardware Availability: Oct-2013

Tested by: Fujitsu

Software Availability: Sep-2013

Peak Optimization Flags (Continued)

456.hmmcr: basepeak = yes

458.sjeng: -xAVX(pass 2) -prof-gen(pass 1) -ipo(pass 2) -O3(pass 2)
-no-prec-div(pass 2) -prof-use(pass 2) -unroll4

462.libquantum: basepeak = yes

464.h264ref: -xAVX(pass 2) -prof-gen(pass 1) -ipo(pass 2) -O3(pass 2)
-no-prec-div(pass 2) -prof-use(pass 2) -unroll2
-ansi-alias

C++ benchmarks:

471.omnetpp: -xAVX(pass 2) -prof-gen(pass 1) -ipo(pass 2) -O3(pass 2)
-no-prec-div(pass 2) -prof-use(pass 2)
-opt-ra-region-strategy=block -ansi-alias
-Wl,-z,muldefs -L/sh -lsmartheap

473.astar: -xAVX -ipo -O3 -no-prec-div -opt-prefetch -auto-p32
-Wl,-z,muldefs -L/sh -lsmartheap64

483.xalancbmk: basepeak = yes

Peak Other Flags

C benchmarks:

403.gcc: -Dalloca=_alloca

The flags files that were used to format this result can be browsed at

<http://www.spec.org/cpu2006/flags/Intel-ic14.0-official-linux64.20140128.html>
<http://www.spec.org/cpu2006/flags/Fujitsu-Platform.20130924.html>

You can also download the XML flags sources by saving the following links:

<http://www.spec.org/cpu2006/flags/Intel-ic14.0-official-linux64.20140128.xml>
<http://www.spec.org/cpu2006/flags/Fujitsu-Platform.20130924.xml>



SPEC CINT2006 Result

Copyright 2006-2014 Standard Performance Evaluation Corporation

Fujitsu

SPECint2006 = 51.9

PRIMERGY RX300 S8, Intel Xeon E5-2660 v2, 2.20 GHz

SPECint_base2006 = 48.1

CPU2006 license: 19

Test sponsor: Fujitsu

Tested by: Fujitsu

Test date: Sep-2013

Hardware Availability: Oct-2013

Software Availability: Sep-2013

SPEC and SPECint are registered trademarks of the Standard Performance Evaluation Corporation. All other brand and product names appearing in this result are trademarks or registered trademarks of their respective holders.

For questions about this result, please contact the tester.
For other inquiries, please contact webmaster@spec.org.

Tested with SPEC CPU2006 v1.2.
Report generated on Thu Jul 24 19:09:50 2014 by SPEC CPU2006 PS/PDF formatter v6932.
Originally published on 5 November 2013.