



SPEC[®] MPIM2007 Result

Copyright 2006-2010 Standard Performance Evaluation Corporation

Intel Corporation

Endeavor (Intel Xeon E7-8890 v3, 2.50 GHz,
DDR4-2133 MHz, SMT on, Turbo off)

SPECmpiM_peak2007 = Not Run

SPECmpiM_base2007 = 60.4

MPI2007 license: 13

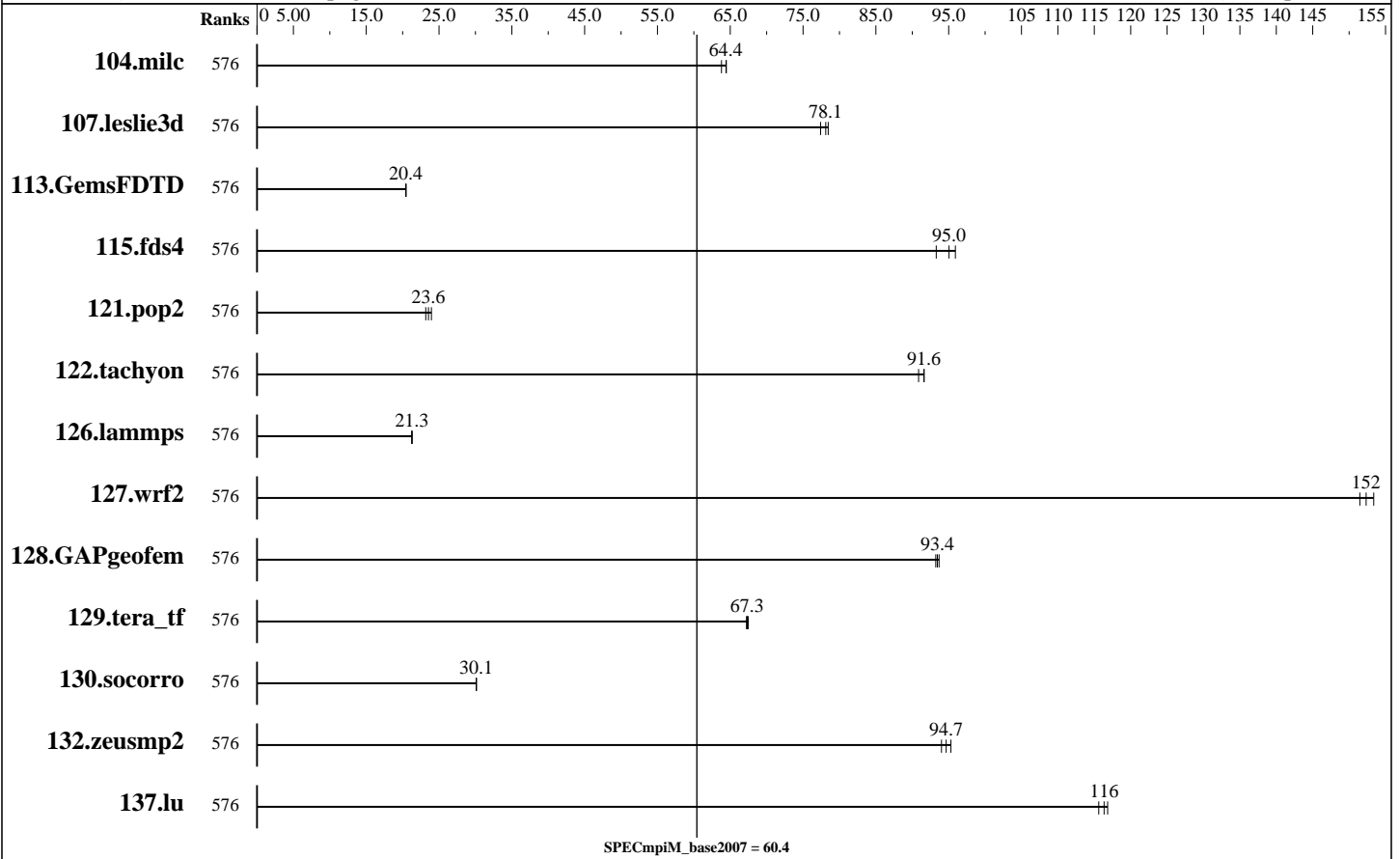
Test sponsor: Intel Corporation

Tested by: Pavel Shelepugin

Test date: May-2015

Hardware Availability: May-2015

Software Availability: Apr-2015



Results Table

Benchmark	Base								Peak							
	Ranks	Seconds	Ratio	Seconds	Ratio	Seconds	Ratio	Ranks	Seconds	Ratio	Seconds	Ratio	Seconds	Ratio		
104.milc	576	24.5	63.8	<u>24.3</u>	<u>64.4</u>	24.3	64.5									
107.leslie3d	576	<u>66.8</u>	<u>78.1</u>	66.5	78.5	67.4	77.4									
113.GemsFDTD	576	308	20.5	<u>308</u>	<u>20.4</u>	309	20.4									
115.fds4	576	<u>20.5</u>	<u>95.0</u>	20.9	93.3	20.3	95.9									
121.pop2	576	172	24.0	178	23.2	<u>175</u>	<u>23.6</u>									
122.tachyon	576	<u>30.5</u>	<u>91.6</u>	30.8	90.9	30.5	91.6									
126.lammps	576	<u>137</u>	<u>21.3</u>	137	21.3	137	21.3									
127.wrf2	576	<u>51.2</u>	<u>152</u>	50.8	153	51.5	151									
128.GAPgeofem	576	<u>22.1</u>	<u>93.4</u>	22.2	93.2	22.0	93.7									
129.tera_tf	576	41.0	67.5	<u>41.1</u>	<u>67.3</u>	41.2	67.2									

Table continues on next page. Results appear in the order in which they were run. Bold underlined text indicates a median measurement.



SPEC MPIM2007 Result

Copyright 2006-2010 Standard Performance Evaluation Corporation

Intel Corporation

Endeavor (Intel Xeon E7-8890 v3, 2.50 GHz, DDR4-2133 MHz, SMT on, Turbo off)

SPECmpiM_peak2007 = Not Run

SPECmpiM_base2007 = 60.4

MPI2007 license: 13

Test sponsor: Intel Corporation

Tested by: Pavel Shelepugin

Test date: May-2015

Hardware Availability: May-2015

Software Availability: Apr-2015

Results Table (Continued)

Benchmark	Base								Peak							
	Ranks	Seconds	Ratio	Seconds	Ratio	Seconds	Ratio	Ranks	Seconds	Ratio	Seconds	Ratio	Seconds	Ratio		
130.socorro	576	127	30.1	<u>127</u>	<u>30.1</u>	127	30.1									
132.zeusmp2	576	32.6	95.3	33.0	94.0	<u>32.8</u>	<u>94.7</u>									
137.lu	576	<u>31.6</u>	<u>116</u>	31.5	117	31.8	116									

Results appear in the order in which they were run. Bold underlined text indicates a median measurement.

Hardware Summary

Type of System: Homogeneous
 Compute Node: Endeavor Node
 Interconnects: IB Switch
 Gigabit Ethernet
 File Server Node: NFS
 Total Compute Nodes: 8
 Total Chips: 32
 Total Cores: 576
 Total Threads: 1152
 Total Memory: 4 TB
 Base Ranks Run: 576
 Minimum Peak Ranks: --
 Maximum Peak Ranks: --

Software Summary

C Compiler: Intel C++ Composer XE 2015 for Linux, Version 15.0.3.187 Build 20150407
 C++ Compiler: Intel C++ Composer XE 2015 for Linux, Version 15.0.3.187 Build 20150407
 Fortran Compiler: Intel Fortran Composer XE 2015 for Linux, Version 15.0.3.187 Build 20150407
 Base Pointers: 64-bit
 Peak Pointers: 64-bit
 MPI Library: Intel MPI Library 5.0.3.048 for Linux
 Other MPI Info: None
 Pre-processors: No
 Other Software: None

Node Description: Endeavor Node

Hardware

Number of nodes: 8
 Uses of the node: compute
 Vendor: Intel
 Model: S4TR2KU1Q
 CPU Name: Intel Xeon E7-8890 v3
 CPU(s) orderable: 1-4 chips
 Chips enabled: 4
 Cores enabled: 72
 Cores per chip: 18
 Threads per core: 2
 CPU Characteristics: Intel Turbo Boost Technology disabled, 9.6 GT/s QPI, Hyper-Threading enabled
 CPU MHz: 2500
 Primary Cache: 32 KB I + 32 KB D on chip per core
 Secondary Cache: 256 KB I+D on chip per core
 L3 Cache: 45 MB I+D on chip per chip, 45 MB shared / 18 cores
 Other Cache: None
 Memory: 512 GB (32 x 16 GB 2Rx4 PC4-17000R-15, ECC)
 Disk Subsystem: ATA INTEL SSDSA2BZ20, SSDSC2BB80
 Other Hardware: None
 Adapter: Intel (ESB2) 82575EB Dual-Port Gigabit Ethernet Controller

Software

Adapter: Intel (ESB2) 82575EB Dual-Port Gigabit Ethernet Controller
 Adapter Driver: e1000
 Adapter Firmware: None
 Adapter: Mellanox MCX353A-FCAT ConnectX-3
 Adapter Driver: OFED 3.5-2-MIC-rc1
 Adapter Firmware: 2.31.5050
 Operating System: Red Hat EL 6.5, kernel 2.6.32-358
 Local File System: Linux/xfs
 Shared File System: NFS
 System State: Multi-User
 Other Software: IBM Platform LSF Standard 9.1.1.1

Continued on next page



SPEC MPIM2007 Result

Copyright 2006-2010 Standard Performance Evaluation Corporation

Intel Corporation

SPECmpiM_peak2007 = Not Run

Endeavor (Intel Xeon E7-8890 v3, 2.50 GHz, DDR4-2133 MHz, SMT on, Turbo off)

SPECmpiM_base2007 = 60.4

MPI2007 license: 13

Test date: May-2015

Test sponsor: Intel Corporation

Hardware Availability: May-2015

Tested by: Pavel Shelepugin

Software Availability: Apr-2015

Node Description: Endeavor Node

Number of Adapters:	1
Slot Type:	PCI-Express x8
Data Rate:	1Gbps Ethernet
Ports Used:	2
Interconnect Type:	Ethernet
Adapter:	Mellanox MCX353A-FCAT ConnectX-3
Number of Adapters:	1
Slot Type:	PCIe x8 Gen3
Data Rate:	InfiniBand 4x FDR
Ports Used:	1
Interconnect Type:	InfiniBand

Node Description: NFS

Hardware	
Number of nodes:	1
Uses of the node:	fileserver
Vendor:	Intel
Model:	S7000FC4UR
CPU Name:	Intel Xeon CPU
CPU(s) orderable:	1-4 chips
Chips enabled:	4
Cores enabled:	16
Cores per chip:	4
Threads per core:	2
CPU Characteristics:	--
CPU MHz:	2926
Primary Cache:	32 KB I + 32 KB D on chip per core
Secondary Cache:	8 MB I+D on chip per chip, 4 MB shared / 2 cores
L3 Cache:	None
Other Cache:	None
Memory:	64 GB
Disk Subsystem:	8 disks, 500GB/disk, 2.7TB total
Other Hardware:	None
Adapter:	Intel 82563GB Dual-Port Gigabit Ethernet Controller
Number of Adapters:	1
Slot Type:	PCI-Express x8
Data Rate:	1Gbps Ethernet
Ports Used:	1
Interconnect Type:	Ethernet

Software	
Adapter:	Intel 82563GB Dual-Port Gigabit Ethernet Controller
Adapter Driver:	e1000e
Adapter Firmware:	N/A
Operating System:	RedHat EL 5 Update 4
Local File System:	None
Shared File System:	NFS
System State:	Multi-User
Other Software:	None



SPEC MPIM2007 Result

Copyright 2006-2010 Standard Performance Evaluation Corporation

Intel Corporation

Endeavor (Intel Xeon E7-8890 v3, 2.50 GHz, DDR4-2133 MHz, SMT on, Turbo off)

SPECmpiM_peak2007 = Not Run

SPECmpiM_base2007 = 60.4

MPI2007 license: 13

Test sponsor: Intel Corporation

Tested by: Pavel Shelepugin

Test date: May-2015

Hardware Availability: May-2015

Software Availability: Apr-2015

Interconnect Description: IB Switch

Hardware	Software
Vendor: Mellanox Model: Mellanox MSX6025F-1BFR Switch Model: Mellanox MSX6025F-1BFR Number of Switches: 46 Number of Ports: 36 Data Rate: InfiniBand 4x FDR Firmware: 9.2.8000 Topology: Fat tree Primary Use: MPI traffic	

Interconnect Description: Gigabit Ethernet

Hardware	Software
Vendor: Force10 Networks, Cisco Systems Model: Force10 S50N, Force10 C300, Cisco WS-C4948E-F Switch Model: Force10 S50N, Force10 C300, Cisco WS-C4948E-F Number of Switches: 13 Number of Ports: 48 Data Rate: 1Gbps Ethernet, 10Gbps Ethernet Firmware: 8.3.2.0, 12.2(54)WO Topology: Star Primary Use: Cluster File System	

Submit Notes

The config file option 'submit' was used.

General Notes

130.socorro (base): "nullify_ptrs" src.alt was used.

129.tera_tf (base): "add_rank_support" src.alt was used.

MPI startup command:
mpiexec.hydra command was used to start MPI jobs.

BIOS settings:
Intel Hyper-Threading Technology (SMT): Enabled (default is Enabled)
Intel Turbo Boost Technology (Turbo) : Disabled (default is Enabled)

RAM configuration:
Compute nodes have 4x16-GB RDIMM on each memory channel.

Network:
Forty six 36-port switches: 18 core switches and 28 leaf switches.
Continued on next page



SPEC MPIM2007 Result

Copyright 2006-2010 Standard Performance Evaluation Corporation

Intel Corporation

Endeavor (Intel Xeon E7-8890 v3, 2.50 GHz,
DDR4-2133 MHz, SMT on, Turbo off)

SPECmpiM_peak2007 = Not Run

SPECmpiM_base2007 = 60.4

MPI2007 license: 13

Test sponsor: Intel Corporation

Tested by: Pavel Shelepugin

Test date: May-2015

Hardware Availability: May-2015

Software Availability: Apr-2015

General Notes (Continued)

Each leaf has one link to each core. Remaining 18 ports on 25 of 28 leafs are used for compute nodes. On the remaining 3 leafs the ports are used for FS nodes and other peripherals.

Job placement:

Each MPI job was assigned to a topologically compact set of nodes, i.e. the minimal needed number of leaf switches was used for each job: 1 switch for 72/144/288/576 ranks.

IBM Platform LSF was used for job submission. It has no impact on performance. Information can be found at: <http://www.ibm.com>

Base Compiler Invocation

C benchmarks:
mpiicc

C++ benchmarks:

126.lammps: mpiicpc

Fortran benchmarks:
mpiifort

Benchmarks using both Fortran and C:
mpiicc mpiifort

Base Portability Flags

121.pop2: -DSPEC_MPI_CASE_FLAG
126.lammps: -DMPICH_IGNORE_CXX_SEEK
127.wrf2: -DSPEC_MPI_CASE_FLAG -DSPEC_MPI_LINUX
130.socorro: -assume nostd_intent_in

Base Optimization Flags

C benchmarks:
-O3 -xCORE-AVX2 -no-prec-div

C++ benchmarks:

126.lammps: -O3 -xCORE-AVX2 -no-prec-div

Fortran benchmarks:

-O3 -xCORE-AVX2 -no-prec-div

Continued on next page



SPEC MPIM2007 Result

Copyright 2006-2010 Standard Performance Evaluation Corporation

Intel Corporation

Endeavor (Intel Xeon E7-8890 v3, 2.50 GHz,
DDR4-2133 MHz, SMT on, Turbo off)

SPECmpiM_peak2007 = Not Run

SPECmpiM_base2007 = 60.4

MPI2007 license: 13

Test sponsor: Intel Corporation

Tested by: Pavel Shelepugin

Test date: May-2015

Hardware Availability: May-2015

Software Availability: Apr-2015

Base Optimization Flags (Continued)

Benchmarks using both Fortran and C:

-O3 -xCORE-AVX2 -no-prec-div

The flags file that was used to format this result can be browsed at

http://www.spec.org/mpi2007/flags/EM64T_Intel140_flags.20140908.html

You can also download the XML flags source by saving the following link:

http://www.spec.org/mpi2007/flags/EM64T_Intel140_flags.20140908.xml

SPEC and SPEC MPI are registered trademarks of the Standard Performance Evaluation Corporation. All other brand and product names appearing in this result are trademarks or registered trademarks of their respective holders.

For questions about this result, please contact the tester.
For other inquiries, please contact webmaster@spec.org.

Tested with SPEC MPI2007 v2.0.1.
Report generated on Wed Jun 10 11:39:55 2015 by SPEC MPI2007 PS/PDF formatter v1463.
Originally published on 10 June 2015.