



SYMPOSIUM'16

AMERICA – EUROPE – ASIA



THE ASIAN SPEC SYMPOSIUM ON SERVER EFFICIENCY

SPEC SFS2014

Application-Level Storage Benchmarking

- Load is now generated at the application level
- Measures the storage performance of whole environment
 - We call this the “Storage Solution”
- Users now have flexibility to configure the benchmark to match their environment
 - Put the bottleneck where you want to show value
- Increased flexibility addresses the market
 - Complexity of storage solutions
 - Diversity of architectures and protocols
 - Fairness to all implementations
- Any other approach is no longer appropriate for industry-standard benchmarking of storage solutions

A New Load Generator

- Prior to SFS 2014, benchmark generated its own NFS/SMB traffic, bypassing the load generator operating system
- SFS 2014 uses native OS calls to generate application-level load, so data and metadata ops are processed by the OS
- Easier to configure, install, and run than previous versions
- Supports custom workloads for research purposes

Features

- Multi-client support is fundamental
- Supports many operating systems and VMs
- Protocol/file system agnostic
- Definable workloads

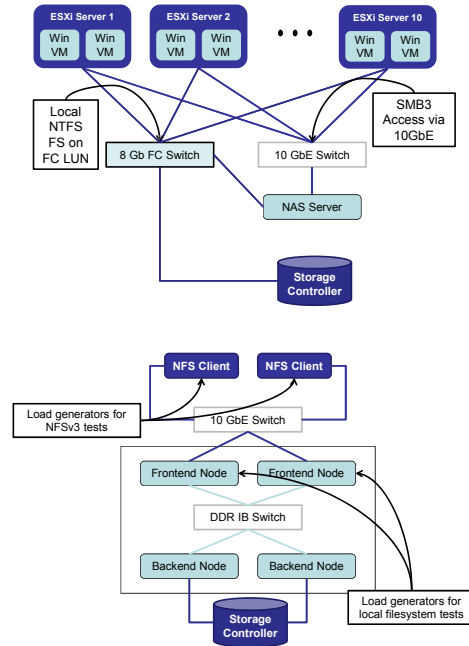
Multiple Workloads

- DATABASE
- SWBUILD
- VDA
- VDI

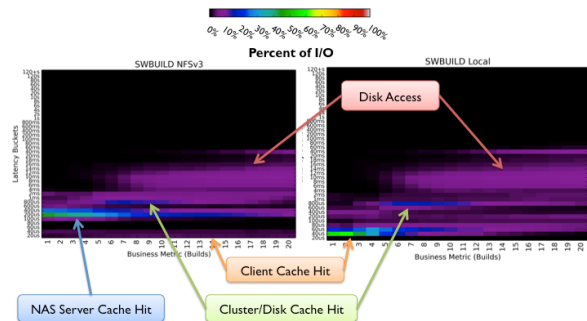
Benchmark Components

- Load generator: netmist
 - Highly customizable, powerful, workload generator
 - SPEC SFS 2014 license includes full version
- Wrappers: SfsManager
 - Provides ease of configuration
 - Coordinates running multiple load points (scaling)
 - Implements business metric logic
 - Including validation of success criteria (quality of service)

Test Any Environment



Latency Heat Map Data at Every Iteration



Publication Example

