



SPEC® CFP2006 Result

Copyright 2006-2017 Standard Performance Evaluation Corporation

Dell Inc.

SPECfp®2006 = 74.9

PowerEdge C6420 (Intel Xeon Silver 4112, 2.60 GHz)

SPECfp_base2006 = 72.5

CPU2006 license: 55

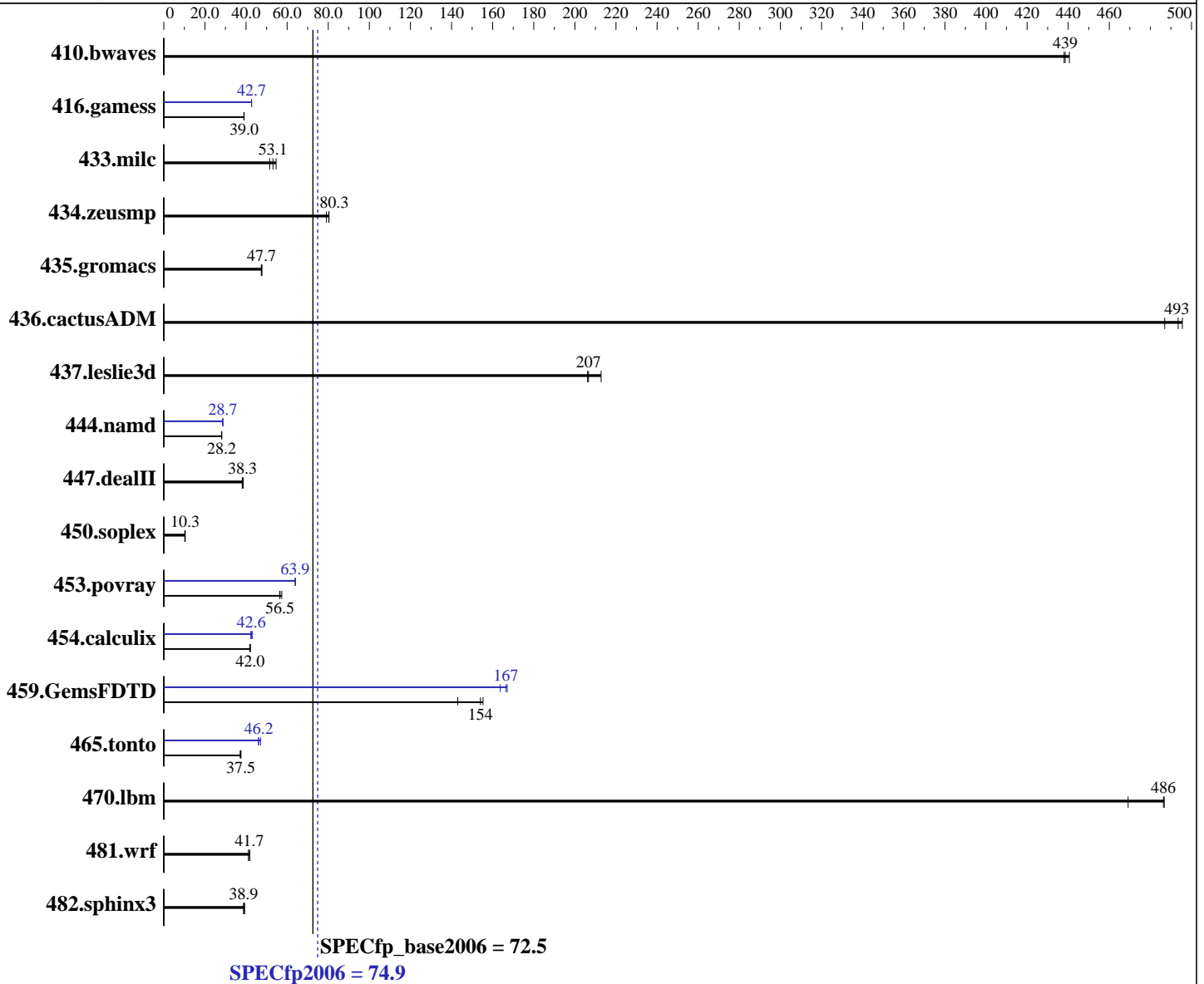
Test date: Jul-2017

Test sponsor: Dell Inc.

Hardware Availability: Jul-2017

Tested by: Dell Inc.

Software Availability: Nov-2016



Hardware

CPU Name: Intel Xeon Silver 4112
 CPU Characteristics: Intel Turbo Boost Technology up to 3.00 GHz
 CPU MHz: 2600
 FPU: Integrated
 CPU(s) enabled: 8 cores, 2 chips, 4 cores/chip, 2 threads/core
 CPU(s) orderable: 1,2 chip
 Primary Cache: 32 KB I + 32 KB D on chip per core
 Secondary Cache: 1 MB I+D on chip per core

Continued on next page

Software

Operating System: SUSE Linux Enterprise Server 12 SP2 (x86_64) 4.4.21-69-default
 Compiler: C/C++: Version 17.0.3.191 of Intel C/C++ Compiler for Linux;
 Fortran: Version 17.0.3.191 of Intel Fortran Compiler for Linux
 Auto Parallel: Yes
 File System: ext4
 System State: Run level 3 (multi-user)

Continued on next page



SPEC CFP2006 Result

Copyright 2006-2017 Standard Performance Evaluation Corporation

Dell Inc.

SPECfp2006 = 74.9

PowerEdge C6420 (Intel Xeon Silver 4112, 2.60 GHz)

SPECfp_base2006 = 72.5

CPU2006 license: 55

Test date: Jul-2017

Test sponsor: Dell Inc.

Hardware Availability: Jul-2017

Tested by: Dell Inc.

Software Availability: Nov-2016

L3 Cache: 8.25 MB I+D on chip per chip
 Other Cache: None
 Memory: 384 GB (12 x 32 GB 2Rx8 PC4-2666V-R, running at 2400 MT/s)
 Disk Subsystem: 1 x 960 GB SATA SSD
 Other Hardware: None

Base Pointers: 64-bit
 Peak Pointers: 32/64-bit
 Other Software: None

Results Table

Benchmark	Base						Peak					
	Seconds	Ratio	Seconds	Ratio	Seconds	Ratio	Seconds	Ratio	Seconds	Ratio	Seconds	Ratio
410.bwaves	31.0	438	30.8	441	31.0	439	31.0	438	30.8	441	31.0	439
416.gamess	501	39.0	501	39.1	502	39.0	458	42.7	458	42.7	459	42.7
433.milc	173	53.1	168	54.6	178	51.5	173	53.1	168	54.6	178	51.5
434.zeusmp	113	80.3	113	80.4	115	79.1	113	80.3	113	80.4	115	79.1
435.gromacs	151	47.4	150	47.7	150	47.7	151	47.4	150	47.7	150	47.7
436.cactusADM	24.1	496	24.5	487	24.2	493	24.1	496	24.5	487	24.2	493
437.leslie3d	44.2	213	45.5	207	45.6	206	44.2	213	45.5	207	45.6	206
444.namd	285	28.2	285	28.2	285	28.2	280	28.7	279	28.7	279	28.7
447.dealII	296	38.7	300	38.2	299	38.3	296	38.7	300	38.2	299	38.3
450.soplex	818	10.2	808	10.3	799	10.4	818	10.2	808	10.3	799	10.4
453.povray	94.1	56.5	94.4	56.4	92.7	57.4	83.2	63.9	83.2	63.9	83.1	64.0
454.calculix	197	41.8	196	42.1	196	42.0	192	43.0	195	42.3	194	42.6
459.GemsFDTD	68.3	155	74.2	143	68.9	154	64.8	164	63.7	167	63.5	167
465.tonto	265	37.1	262	37.5	262	37.5	213	46.2	209	47.1	214	46.0
470.lbm	28.3	486	28.2	487	29.3	469	28.3	486	28.2	487	29.3	469
481.wrf	267	41.8	272	41.1	268	41.7	267	41.8	272	41.1	268	41.7
482.sphinx3	502	38.8	501	38.9	495	39.3	502	38.8	501	38.9	495	39.3

Results appear in the order in which they were run. Bold underlined text indicates a median measurement.

Operating System Notes

Stack size set to unlimited using "ulimit -s unlimited"

Platform Notes

BIOS settings:
 Sub NUMA Cluster disabled
 Virtualization Technology disabled
 System Profile set to Custom
 CPU Performance set to Maximum Performance
 C States set to Autonomous
 C1E disabled
 Energy Efficient Turbo disabled
 Uncore Frequency set to Dynamic

Continued on next page



SPEC CFP2006 Result

Copyright 2006-2017 Standard Performance Evaluation Corporation

Dell Inc.

SPECfp2006 = 74.9

PowerEdge C6420 (Intel Xeon Silver 4112, 2.60 GHz)

SPECfp_base2006 = 72.5

CPU2006 license: 55

Test date: Jul-2017

Test sponsor: Dell Inc.

Hardware Availability: Jul-2017

Tested by: Dell Inc.

Software Availability: Nov-2016

Platform Notes (Continued)

Energy Efficiency Policy set to Performance
 Memory Patrol Scrub disabled
 Logical Processor enabled
 CPU Interconnect Bus Link Power Management disabled
 PCI ASPM L1 Link Power Management disabled
 Sysinfo program /root/cpu2006-1.2_ic17u3/config/sysinfo.rev6993
 Revision 6993 of 2015-11-06 (b5e8d4b4eb51ed28d7f98696cbe290c1)
 running on linux-fx60 Wed Jul 19 23:07:09 2017

This section contains SUT (System Under Test) info as seen by some common utilities. To remove or add to this section, see: <http://www.spec.org/cpu2006/Docs/config.html#sysinfo>

```
From /proc/cpuinfo
model name : Intel(R) Xeon(R) Silver 4112 CPU @ 2.60GHz
 2 "physical id"s (chips)
 16 "processors"
cores, siblings (Caution: counting these is hw and system dependent. The
following excerpts from /proc/cpuinfo might not be reliable. Use with
caution.)
  cpu cores : 4
  siblings  : 8
  physical 0: cores 1 2 4 5
  physical 1: cores 1 2 4 5
cache size : 8448 KB
```

```
From /proc/meminfo
MemTotal:      394868380 kB
HugePages_Total:    0
Hugepagesize:    2048 kB
```

```
From /etc/*release* /etc/*version*
SuSE-release:
  SUSE Linux Enterprise Server 12 (x86_64)
  VERSION = 12
  PATCHLEVEL = 2
  # This file is deprecated and will be removed in a future service pack or
  # release.
  # Please check /etc/os-release for details about this release.
os-release:
  NAME="SLES"
  VERSION="12-SP2"
  VERSION_ID="12.2"
  PRETTY_NAME="SUSE Linux Enterprise Server 12 SP2"
  ID="sles"
  ANSI_COLOR="0;32"
  CPE_NAME="cpe:/o:suse:sles:12:sp2"
```

```
uname -a:
Linux linux-fx60 4.4.21-69-default #1 SMP Tue Oct 25 10:58:20 UTC 2016
(9464f67) x86_64 x86_64 x86_64 GNU/Linux
```

Continued on next page



SPEC CFP2006 Result

Copyright 2006-2017 Standard Performance Evaluation Corporation

Dell Inc.

SPECfp2006 = 74.9

PowerEdge C6420 (Intel Xeon Silver 4112, 2.60 GHz)

SPECfp_base2006 = 72.5

CPU2006 license: 55

Test date: Jul-2017

Test sponsor: Dell Inc.

Hardware Availability: Jul-2017

Tested by: Dell Inc.

Software Availability: Nov-2016

Platform Notes (Continued)

run-level 3 Jul 18 10:01

SPEC is set to: /root/cpu2006-1.2_ic17u3

Filesystem	Type	Size	Used	Avail	Use%	Mounted on
/dev/sda2	ext4	909G	11G	898G	2%	/

Additional information from dmidecode:

Warning: Use caution when you interpret this section. The 'dmidecode' program reads system data which is "intended to allow hardware to be accurately determined", but the intent may not be met, as there are frequent changes to hardware, firmware, and the "DMTF SMBIOS" standard.

BIOS Dell Inc. 1.0.8 07/12/2017

Memory:

2x 002C00B3002C 36ASF4G72PZ-2G6D1 32 GB 2 rank 2666 MHz, configured at 2400 MHz

10x 002C0632002C 36ASF4G72PZ-2G6D1 32 GB 2 rank 2666 MHz, configured at 2400 MHz

4x Not Specified Not Specified

(End of data from sysinfo program)

General Notes

Environment variables set by runspec before the start of the run:

KMP_AFFINITY = "granularity=fine,compact,1,0"

LD_LIBRARY_PATH = "/root/cpu2006-1.2_ic17u3/lib/ia32:/root/cpu2006-1.2_ic17u3/lib/intel64:/root/cpu2006-1.2_ic17u3/sh10.2"

OMP_NUM_THREADS = "8"

Binaries compiled on a system with 1x Intel Core i7-4790 CPU + 32GB RAM memory using Redhat Enterprise Linux 7.2

Transparent Huge Pages enabled by default.

Filesystem page cache cleared with:

shell invocation of 'sync; echo 3 > /proc/sys/vm/drop_caches' prior to run

Base Compiler Invocation

C benchmarks:

icc -m64

C++ benchmarks:

icpc -m64

Fortran benchmarks:

ifort -m64

Benchmarks using both Fortran and C:

icc -m64 ifort -m64



SPEC CFP2006 Result

Copyright 2006-2017 Standard Performance Evaluation Corporation

Dell Inc.

SPECfp2006 = 74.9

PowerEdge C6420 (Intel Xeon Silver 4112, 2.60 GHz)

SPECfp_base2006 = 72.5

CPU2006 license: 55

Test date: Jul-2017

Test sponsor: Dell Inc.

Hardware Availability: Jul-2017

Tested by: Dell Inc.

Software Availability: Nov-2016

Base Portability Flags

```

410.bwaves: -DSPEC_CPU_LP64
416.gamess: -DSPEC_CPU_LP64
433.milc: -DSPEC_CPU_LP64
434.zeusmp: -DSPEC_CPU_LP64
435.gromacs: -DSPEC_CPU_LP64 -nofor_main
436.cactusADM: -DSPEC_CPU_LP64 -nofor_main
437.leslie3d: -DSPEC_CPU_LP64
444.namd: -DSPEC_CPU_LP64
447.dealII: -DSPEC_CPU_LP64
450.soplex: -DSPEC_CPU_LP64
453.povray: -DSPEC_CPU_LP64
454.calculix: -DSPEC_CPU_LP64 -nofor_main
459.GemsFDTD: -DSPEC_CPU_LP64
465.tonto: -DSPEC_CPU_LP64
470.lbm: -DSPEC_CPU_LP64
481.wrf: -DSPEC_CPU_LP64 -DSPEC_CPU_CASE_FLAG -DSPEC_CPU_LINUX
482.sphinx3: -DSPEC_CPU_LP64

```

Base Optimization Flags

```

C benchmarks:
-xCORE-AVX2 -ipo -O3 -no-prec-div -parallel -qopt-prefetch

C++ benchmarks:
-xCORE-AVX2 -ipo -O3 -no-prec-div -qopt-prefetch

Fortran benchmarks:
-xCORE-AVX2 -ipo -O3 -no-prec-div -parallel -qopt-prefetch

Benchmarks using both Fortran and C:
-xCORE-AVX2 -ipo -O3 -no-prec-div -parallel -qopt-prefetch

```

Peak Compiler Invocation

```

C benchmarks:
icc -m64

C++ benchmarks:
icpc -m64

Fortran benchmarks:
ifort -m64

Benchmarks using both Fortran and C:
icc -m64 ifort -m64

```



SPEC CFP2006 Result

Copyright 2006-2017 Standard Performance Evaluation Corporation

Dell Inc.

SPECfp2006 = 74.9

PowerEdge C6420 (Intel Xeon Silver 4112, 2.60 GHz)

SPECfp_base2006 = 72.5

CPU2006 license: 55

Test date: Jul-2017

Test sponsor: Dell Inc.

Hardware Availability: Jul-2017

Tested by: Dell Inc.

Software Availability: Nov-2016

Peak Portability Flags

Same as Base Portability Flags

Peak Optimization Flags

C benchmarks:

433.milc: basepeak = yes

470.lbm: basepeak = yes

482.sphinx3: basepeak = yes

C++ benchmarks:

444.namd: -prof-gen(pass 1) -prof-use(pass 2) -xCORE-AVX2(pass 2)
-par-num-threads=1(pass 1) -ipo(pass 2) -O3(pass 2)
-no-prec-div(pass 2) -fno-alias -auto-ilp32

447.dealII: basepeak = yes

450.soplex: basepeak = yes

453.povray: -prof-gen(pass 1) -prof-use(pass 2) -xCORE-AVX2(pass 2)
-par-num-threads=1(pass 1) -ipo(pass 2) -O3(pass 2)
-no-prec-div(pass 2) -unroll4 -ansi-alias

Fortran benchmarks:

410.bwaves: basepeak = yes

416.gamess: -prof-gen(pass 1) -prof-use(pass 2) -xCORE-AVX2(pass 2)
-par-num-threads=1(pass 1) -ipo(pass 2) -O3(pass 2)
-no-prec-div(pass 2) -unroll2 -inline-level=0 -scalar-rep-

434.zeusmp: basepeak = yes

437.leslie3d: basepeak = yes

459.GemsFDTD: -prof-gen(pass 1) -prof-use(pass 2) -xCORE-AVX2(pass 2)
-par-num-threads=1(pass 1) -ipo(pass 2) -O3(pass 2)
-no-prec-div(pass 2) -unroll2 -inline-level=0
-qopt-prefetch -parallel

465.tonto: -prof-gen(pass 1) -prof-use(pass 2) -xCORE-AVX2(pass 2)
-par-num-threads=1(pass 1) -ipo(pass 2) -O3(pass 2)
-no-prec-div(pass 2) -inline-calloc -qopt-malloc-options=3
-auto -unroll4

Continued on next page



SPEC CFP2006 Result

Copyright 2006-2017 Standard Performance Evaluation Corporation

Dell Inc.

SPECfp2006 = 74.9

PowerEdge C6420 (Intel Xeon Silver 4112, 2.60 GHz)

SPECfp_base2006 = 72.5

CPU2006 license: 55

Test date: Jul-2017

Test sponsor: Dell Inc.

Hardware Availability: Jul-2017

Tested by: Dell Inc.

Software Availability: Nov-2016

Peak Optimization Flags (Continued)

Benchmarks using both Fortran and C:

435.gromacs: basepeak = yes

436.cactusADM: basepeak = yes

454.calculix: -xCORE-AVX2 -ipo -O3 -no-prec-div -auto-ilp32

481.wrf: basepeak = yes

The flags files that were used to format this result can be browsed at

<http://www.spec.org/cpu2006/flags/Intel-ic17.0-official-linux64-revF.html>

<http://www.spec.org/cpu2006/flags/Dell-Platform-Flags-PowerEdge14G-revC.html>

You can also download the XML flags sources by saving the following links:

<http://www.spec.org/cpu2006/flags/Intel-ic17.0-official-linux64-revF.xml>

<http://www.spec.org/cpu2006/flags/Dell-Platform-Flags-PowerEdge14G-revC.xml>

SPEC and SPECfp are registered trademarks of the Standard Performance Evaluation Corporation. All other brand and product names appearing in this result are trademarks or registered trademarks of their respective holders.

For questions about this result, please contact the tester.
For other inquiries, please contact webmaster@spec.org.

Tested with SPEC CPU2006 v1.2.
Report generated on Wed Aug 23 13:13:49 2017 by SPEC CPU2006 PS/PDF formatter v6932.
Originally published on 22 August 2017.