



# SPEC® CFP2006 Result

Copyright 2006-2016 Standard Performance Evaluation Corporation

Hewlett Packard Enterprise

(Test Sponsor: HPE)

ProLiant DL380 Gen9

(2.60 GHz, Intel Xeon E5-2690 v4)

SPECfp®2006 =

125

SPECfp\_base2006 =

119

CPU2006 license: 3

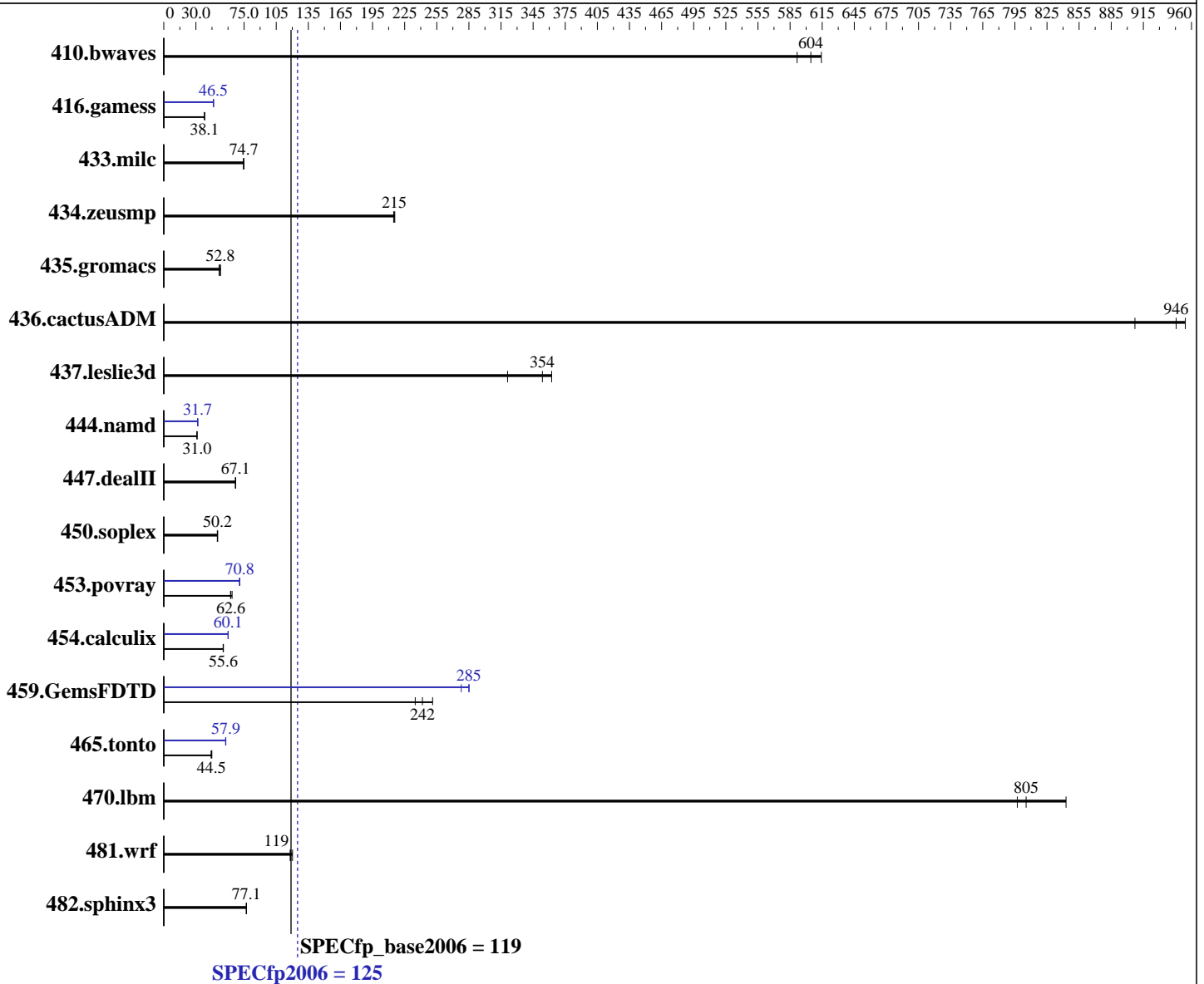
Test sponsor: HPE

Tested by: HPE

Test date: Mar-2016

Hardware Availability: Mar-2016

Software Availability: Nov-2015



## Hardware

CPU Name: Intel Xeon E5-2690 v4  
 CPU Characteristics: Intel Turbo Boost Technology up to 3.50 GHz  
 CPU MHz: 2600  
 FPU: Integrated  
 CPU(s) enabled: 28 cores, 2 chips, 14 cores/chip, 2 threads/core  
 CPU(s) orderable: 1,2 chip  
 Primary Cache: 32 KB I + 32 KB D on chip per core  
 Secondary Cache: 256 KB I+D on chip per core

Continued on next page

## Software

Operating System: Red Hat Enterprise Linux Server release 7.2, (Maipo)  
 Kernel 3.10.0-327.el7.x86\_64  
 Compiler: C/C++: Version 16.0.0.101 of Intel C++ Studio XE for Linux;  
 Fortran: Version 16.0.0.101 of Intel Fortran Studio XE for Linux  
 Auto Parallel: Yes  
 File System: xfs

Continued on next page



# SPEC CFP2006 Result

Copyright 2006-2016 Standard Performance Evaluation Corporation

Hewlett Packard Enterprise

(Test Sponsor: HPE)

ProLiant DL380 Gen9

(2.60 GHz, Intel Xeon E5-2690 v4)

SPECfp2006 = 125

SPECfp\_base2006 = 119

CPU2006 license: 3

Test sponsor: HPE

Tested by: HPE

Test date: Mar-2016

Hardware Availability: Mar-2016

Software Availability: Nov-2015

L3 Cache: 35 MB I+D on chip per chip  
Other Cache: None  
Memory: 512 GB (16 x 32 GB 2Rx4 PC4-2400T-R)  
Disk Subsystem: 1 x 400 GB SAS SSD, RAID 0  
Other Hardware: None

System State: Run level 3 (multi-user)  
Base Pointers: 64-bit  
Peak Pointers: 32/64-bit  
Other Software: None

## Results Table

Benchmark	Base						Peak					
	Seconds	Ratio	Seconds	Ratio	Seconds	Ratio	Seconds	Ratio	Seconds	Ratio	Seconds	Ratio
410.bwaves	23.0	592	<u>22.5</u>	<u>604</u>	22.1	614	23.0	592	<u>22.5</u>	<u>604</u>	22.1	614
416.gamess	517	37.9	514	38.1	<u>514</u>	<u>38.1</u>	423	46.3	<u>421</u>	<u>46.5</u>	421	46.5
433.milc	<u>123</u>	<u>74.7</u>	123	74.4	123	74.8	<u>123</u>	<u>74.7</u>	123	74.4	123	74.8
434.zeusmp	42.2	216	42.4	215	<u>42.3</u>	<u>215</u>	42.2	216	42.4	215	<u>42.3</u>	<u>215</u>
435.gromacs	138	51.6	135	52.9	<u>135</u>	<u>52.8</u>	138	51.6	135	52.9	<u>135</u>	<u>52.8</u>
436.cactusADM	13.2	907	12.5	954	<u>12.6</u>	<u>946</u>	13.2	907	12.5	954	<u>12.6</u>	<u>946</u>
437.leslie3d	<u>26.6</u>	<u>354</u>	25.9	362	29.3	321	<u>26.6</u>	<u>354</u>	25.9	362	29.3	321
444.namd	<u>259</u>	<u>31.0</u>	259	31.0	259	31.0	253	31.7	<u>253</u>	<u>31.7</u>	253	31.7
447.dealII	<u>171</u>	<u>67.1</u>	171	66.8	170	67.1	<u>171</u>	<u>67.1</u>	171	66.8	170	67.1
450.soplex	166	50.3	<u>166</u>	<u>50.2</u>	167	50.0	166	50.3	<u>166</u>	<u>50.2</u>	167	50.0
453.povray	<u>84.9</u>	<u>62.6</u>	85.4	62.3	83.4	63.8	75.0	70.9	<u>75.1</u>	<u>70.8</u>	75.3	70.7
454.calculix	148	55.6	149	55.4	<u>148</u>	<u>55.6</u>	<u>137</u>	<u>60.1</u>	137	60.2	138	60.0
459.GemsFDTD	45.2	235	42.3	251	<u>43.9</u>	<u>242</u>	38.2	278	37.2	285	<u>37.2</u>	<u>285</u>
465.tonto	223	44.2	219	44.9	<u>221</u>	<u>44.5</u>	<u>170</u>	<u>57.9</u>	170	57.9	171	57.7
470.lbm	<u>17.1</u>	<u>805</u>	16.3	843	17.2	797	<u>17.1</u>	<u>805</u>	16.3	843	17.2	797
481.wrf	92.9	120	<u>94.3</u>	<u>119</u>	94.6	118	92.9	120	<u>94.3</u>	<u>119</u>	94.6	118
482.sphinx3	253	77.1	<u>253</u>	<u>77.1</u>	253	77.2	253	77.1	<u>253</u>	<u>77.1</u>	253	77.2

Results appear in the order in which they were run. Bold underlined text indicates a median measurement.

## Operating System Notes

Stack size set to unlimited using "ulimit -s unlimited"  
Transparent Huge Pages enabled with:  
echo always > /sys/kernel/mm/transparent\_hugepage/enabled

## Platform Notes

BIOS Configuration:  
HP Power Profile set to Custom  
HP Power Regulator to HP Static High Performance Mode  
Minimum Processor Idle Power Core C-State set to C1E State  
Minimum Processor Idle Power Package C-State set to No Package State  
QPI Snoop Configuration set to Home Snoop  
Collaborative Power Control set to Disabled  
Thermal Configuration set to Maximum Cooling  
Continued on next page



# SPEC CFP2006 Result

Copyright 2006-2016 Standard Performance Evaluation Corporation

**Hewlett Packard Enterprise**

(Test Sponsor: HPE)

**ProLiant DL380 Gen9**  
(2.60 GHz, Intel Xeon E5-2690 v4)

**SPECfp2006 = 125**

**SPECfp\_base2006 = 119**

**CPU2006 license:** 3

**Test sponsor:** HPE

**Tested by:** HPE

**Test date:** Mar-2016

**Hardware Availability:** Mar-2016

**Software Availability:** Nov-2015

## Platform Notes (Continued)

Processor Power and Utilization Monitoring set to Disabled  
Memory Refresh Rate set to 1x Refresh

Sysinfo program /home/cpu2006/config/sysinfo.rev6914  
\$Rev: 6914 \$ \$Date:: 2014-06-25 #\$ e3fbb8667b5a285932ceab81e28219e1  
running on DL380Gen9allbin Mon Mar 7 09:39:34 2016

This section contains SUT (System Under Test) info as seen by some common utilities. To remove or add to this section, see:  
<http://www.spec.org/cpu2006/Docs/config.html#sysinfo>

From /proc/cpuinfo

```
model name      : Intel(R) Xeon(R) CPU E5-2690 v4@ 2.60GHz
 2 "physical id"s (chips)
 56 "processors"
cores, siblings (Caution: counting these is hw and system dependent. The following excerpts from /proc/cpuinfo might not be reliable. Use with caution.)
  cpu cores      : 14
  siblings       : 28
  physical 0:    : cores 0 1 2 3 4 5 6 8 9 10 11 12 13 14
  physical 1:    : cores 0 1 2 3 4 5 6 8 9 10 11 12 13 14
cache size      : 35840 KB
```

From /proc/meminfo

```
MemTotal:      528063740 kB
HugePages_Total: 0
Hugepagesize:   2048 kB
```

From /etc/\*release\* /etc/\*version\*

```
os-release:
NAME="Red Hat Enterprise Linux Server"
VERSION="7.2 (Maipo)"
ID="rhel"
ID_LIKE="fedora"
VERSION_ID="7.2"
PRETTY_NAME="Red Hat Enterprise Linux Server 7.2 (Maipo)"
ANSI_COLOR="0;31"
CPE_NAME="cpe:/o:redhat:enterprise_linux:7.2:GA:server"
redhat-release: Red Hat Enterprise Linux Server release 7.2 (Maipo)
system-release: Red Hat Enterprise Linux Server release 7.2 (Maipo)
system-release-cpe: cpe:/o:redhat:enterprise_linux:7.2:ga:server
```

uname -a:

```
Linux DL380Gen9allbin 3.10.0-327.el7.x86_64 #1 SMP Thu Oct 29 17:29:29 EDT 2015 x86_64 x86_64 x86_64 GNU/Linux
```

run-level 3 Mar 7 09:37

SPEC is set to: /home/cpu2006

```
Filesystem      Type  Size  Used Avail Use% Mounted on
/dev/sda5       xfs   318G  108G  211G  34% /home
```

Continued on next page



# SPEC CFP2006 Result

Copyright 2006-2016 Standard Performance Evaluation Corporation

**Hewlett Packard Enterprise**

(Test Sponsor: HPE)

**ProLiant DL380 Gen9**

(2.60 GHz, Intel Xeon E5-2690 v4)

**SPECfp2006 =**

**125**

**SPECfp\_base2006 =**

**119**

**CPU2006 license:** 3

**Test sponsor:** HPE

**Tested by:** HPE

**Test date:** Mar-2016

**Hardware Availability:** Mar-2016

**Software Availability:** Nov-2015

## Platform Notes (Continued)

Additional information from dmidecode:

Warning: Use caution when you interpret this section. The 'dmidecode' program reads system data which is "intended to allow hardware to be accurately determined", but the intent may not be met, as there are frequent changes to hardware, firmware, and the "DMTF SMBIOS" standard.

BIOS HP P89 02/22/2016

Memory:

8x UNKNOWN NOT AVAILABLE

16x UNKNOWN NOT AVAILABLE 32 GB 2 rank 2400 MHz

(End of data from sysinfo program)

Regarding the sysinfo display about the memory installed, the correct amount of memory is 512 GB and the dmidecode description should have one line reading as: 16x UNKNOWN NOT AVAILABLE 32 GB 2 rank 2400 MHz

## General Notes

Environment variables set by runspec before the start of the run:

KMP\_AFFINITY = "granularity=fine,compact,1,0"

OMP\_NUM\_THREADS = "28"

LD\_LIBRARY\_PATH = "/home/cpu2006/libs/32:/home/cpu2006/libs/64:/home/cpu2006/sh"

Binaries compiled on a system with 1x Intel Xeon E5-2660 v4 CPU + 128GB memory using RedHat EL 7.2

## Base Compiler Invocation

C benchmarks:

icc -m64

C++ benchmarks:

icpc -m64

Fortran benchmarks:

ifort -m64

Benchmarks using both Fortran and C:

icc -m64 ifort -m64

## Base Portability Flags

410.bwaves: -DSPEC\_CPU\_LP64

416.gamess: -DSPEC\_CPU\_LP64

433.milc: -DSPEC\_CPU\_LP64

Continued on next page

Standard Performance Evaluation Corporation

info@spec.org

http://www.spec.org/

Page 4



# SPEC CFP2006 Result

Copyright 2006-2016 Standard Performance Evaluation Corporation

Hewlett Packard Enterprise

(Test Sponsor: HPE)

ProLiant DL380 Gen9

(2.60 GHz, Intel Xeon E5-2690 v4)

SPECfp2006 =

125

SPECfp\_base2006 =

119

CPU2006 license: 3

Test sponsor: HPE

Tested by: HPE

Test date: Mar-2016

Hardware Availability: Mar-2016

Software Availability: Nov-2015

## Base Portability Flags (Continued)

```

434.zeusmp: -DSPEC_CPU_LP64
435.gromacs: -DSPEC_CPU_LP64 -nofor_main
436.cactusADM: -DSPEC_CPU_LP64 -nofor_main
437.leslie3d: -DSPEC_CPU_LP64
444.namd: -DSPEC_CPU_LP64
447.deallI: -DSPEC_CPU_LP64
450.soplex: -DSPEC_CPU_LP64
453.povray: -DSPEC_CPU_LP64
454.calculix: -DSPEC_CPU_LP64 -nofor_main
459.GemsFDTD: -DSPEC_CPU_LP64
465.tonto: -DSPEC_CPU_LP64
470.lbm: -DSPEC_CPU_LP64
481.wrf: -DSPEC_CPU_LP64 -DSPEC_CPU_CASE_FLAG -DSPEC_CPU_LINUX
482.sphinx3: -DSPEC_CPU_LP64

```

## Base Optimization Flags

C benchmarks:

```

-xCORE-AVX2 -ipo -O3 -no-prec-div -static -parallel -opt-prefetch
-ansi-alias -fp-model fast=2
-qopt-prefetch-issue-excl-hint

```

C++ benchmarks:

```

-xCORE-AVX2 -ipo -O3 -no-prec-div -static -opt-prefetch -ansi-alias
-fp-model fast=2
-qopt-prefetch-issue-excl-hint

```

Fortran benchmarks:

```

-xCORE-AVX2 -ipo -O3 -no-prec-div -static -parallel -opt-prefetch
-fp-model fast=2
-qopt-prefetch-issue-excl-hint

```

Benchmarks using both Fortran and C:

```

-xCORE-AVX2 -ipo -O3 -no-prec-div -static -parallel -opt-prefetch
-ansi-alias -fp-model fast=2
-qopt-prefetch-issue-excl-hint

```

## Peak Compiler Invocation

C benchmarks:

icc -m64

C++ benchmarks:

icpc -m64

Continued on next page



# SPEC CFP2006 Result

Copyright 2006-2016 Standard Performance Evaluation Corporation

**Hewlett Packard Enterprise**

(Test Sponsor: HPE)

ProLiant DL380 Gen9

(2.60 GHz, Intel Xeon E5-2690 v4)

**SPECfp2006 =**

**125**

**SPECfp\_base2006 =**

**119**

**CPU2006 license:** 3

**Test sponsor:** HPE

**Tested by:** HPE

**Test date:** Mar-2016

**Hardware Availability:** Mar-2016

**Software Availability:** Nov-2015

## Peak Compiler Invocation (Continued)

Fortran benchmarks:

ifort -m64

Benchmarks using both Fortran and C:

icc -m64 ifort -m64

## Peak Portability Flags

Same as Base Portability Flags

## Peak Optimization Flags

C benchmarks:

433.milc: basepeak = yes

470.lbm: basepeak = yes

482.sphinx3: basepeak = yes

C++ benchmarks:

444.namd: -xCORE-AVX2(pass 2) -prof-gen:threadsafe(pass 1)  
-ipo(pass 2) -O3(pass 2) -no-prec-div(pass 2)  
-par-num-threads=1(pass 1) -prof-use(pass 2) -fno-alias  
-auto-ilp32

447.dealIII: basepeak = yes

450.soplex: basepeak = yes

453.povray: -xCORE-AVX2(pass 2) -prof-gen:threadsafe(pass 1)  
-ipo(pass 2) -O3(pass 2) -no-prec-div(pass 2)  
-par-num-threads=1(pass 1) -prof-use(pass 2) -unroll4  
-ansi-alias

Fortran benchmarks:

410.bwaves: basepeak = yes

416.gamess: -xCORE-AVX2(pass 2) -prof-gen:threadsafe(pass 1)  
-ipo(pass 2) -O3(pass 2) -no-prec-div(pass 2)  
-par-num-threads=1(pass 1) -prof-use(pass 2) -unroll2  
-inline-level=0 -scalar-rep-

Continued on next page



# SPEC CFP2006 Result

Copyright 2006-2016 Standard Performance Evaluation Corporation

**Hewlett Packard Enterprise**

(Test Sponsor: HPE)

ProLiant DL380 Gen9

(2.60 GHz, Intel Xeon E5-2690 v4)

**SPECfp2006 =**

**125**

**SPECfp\_base2006 =**

**119**

**CPU2006 license:** 3

**Test sponsor:** HPE

**Tested by:** HPE

**Test date:** Mar-2016

**Hardware Availability:** Mar-2016

**Software Availability:** Nov-2015

## Peak Optimization Flags (Continued)

434.zeusmp: basepeak = yes

437.leslie3d: basepeak = yes

459.GemsFDTD: -xCORE-AVX2(pass 2) -prof-gen:threadsafe(pass 1)  
-ipo(pass 2) -O3(pass 2) -no-prec-div(pass 2)  
-par-num-threads=1(pass 1) -prof-use(pass 2) -unroll2  
-inline-level=0 -opt-prefetch -parallel

465.tonto: -xCORE-AVX2(pass 2) -prof-gen:threadsafe(pass 1)  
-ipo(pass 2) -O3(pass 2) -no-prec-div(pass 2)  
-par-num-threads=1(pass 1) -prof-use(pass 2) -inline-calloc  
-opt-malloc-options=3 -auto -unroll4

Benchmarks using both Fortran and C:

435.gromacs: basepeak = yes

436.cactusADM: basepeak = yes

454.calculix: -xCORE-AVX2 -ipo -O3 -no-prec-div -auto-ilp32 -ansi-alias

481.wrf: basepeak = yes

The flags files that were used to format this result can be browsed at

<http://www.spec.org/cpu2006/flags/HP-Platform-Flags-Intel-V1.2-HSW-revE.html>

<http://www.spec.org/cpu2006/flags/HP-Compiler-Flags-Intel-V1.2-BDW-revE.html>

You can also download the XML flags sources by saving the following links:

<http://www.spec.org/cpu2006/flags/HP-Platform-Flags-Intel-V1.2-HSW-revE.xml>

<http://www.spec.org/cpu2006/flags/HP-Compiler-Flags-Intel-V1.2-BDW-revE.xml>

SPEC and SPECfp are registered trademarks of the Standard Performance Evaluation Corporation. All other brand and product names appearing in this result are trademarks or registered trademarks of their respective holders.

For questions about this result, please contact the tester.  
For other inquiries, please contact [webmaster@spec.org](mailto:webmaster@spec.org).

Tested with SPEC CPU2006 v1.2.

Report generated on Tue May 3 18:00:43 2016 by SPEC CPU2006 PS/PDF formatter v6932.

Originally published on 3 May 2016.