



SPEC® CFP2006 Result

Copyright 2006-2015 Standard Performance Evaluation Corporation

Huawei

SPECfp®2006 = 98.2

Huawei CH226 V3 (Intel Xeon E5-2620 v3)

SPECfp_base2006 = 93.3

CPU2006 license: 3175

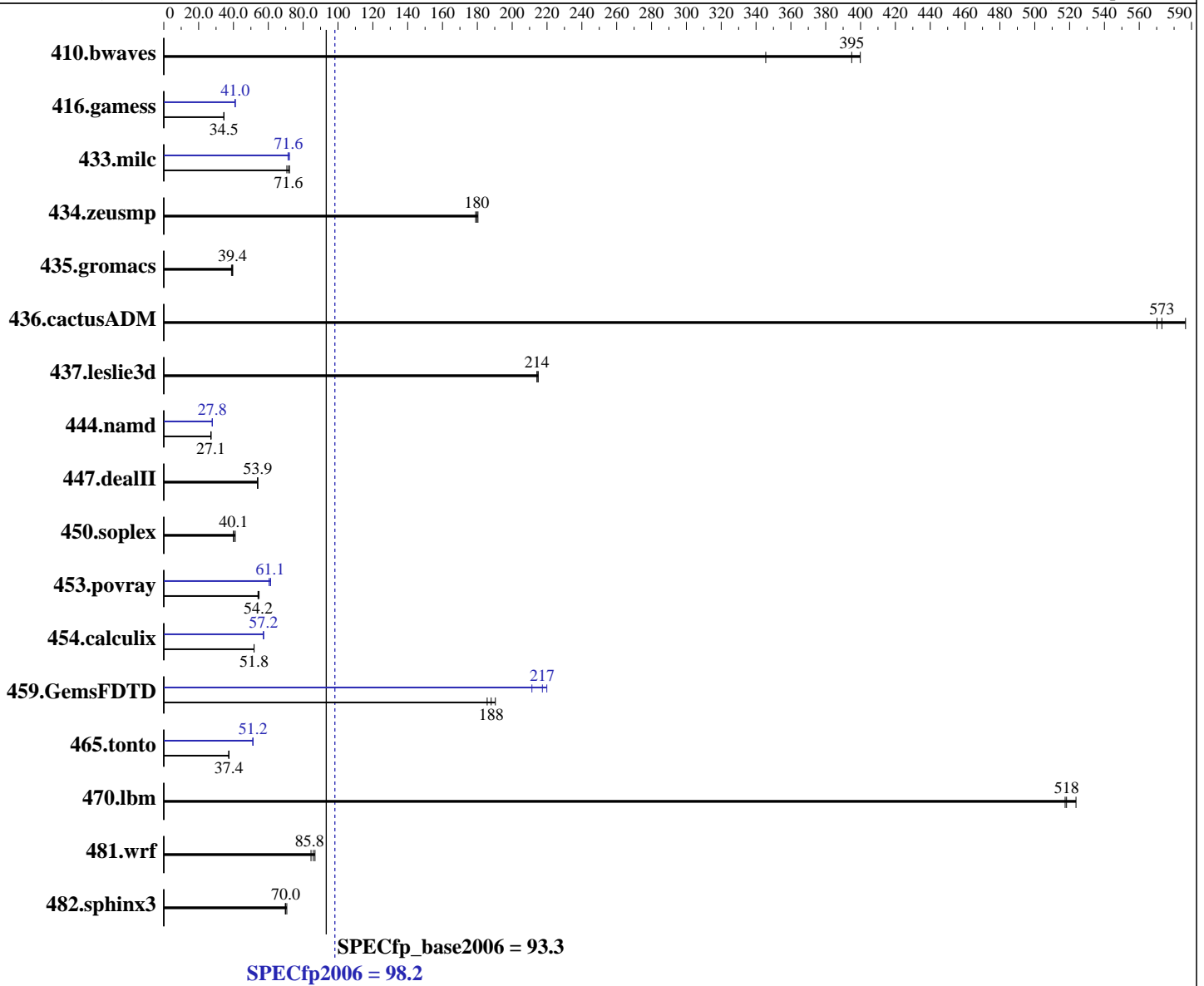
Test sponsor: Huawei

Tested by: Huawei

Test date: Aug-2015

Hardware Availability: Sep-2014

Software Availability: Sep-2014



Hardware

CPU Name: Intel Xeon E5-2620 v3
 CPU Characteristics: Intel Turbo Boost Technology up to 3.20 GHz
 CPU MHz: 2400
 FPU: Integrated
 CPU(s) enabled: 12 cores, 2 chips, 6 cores/chip
 CPU(s) orderable: 1,2 chip
 Primary Cache: 32 KB I + 32 KB D on chip per core
 Secondary Cache: 256 KB I+D on chip per core

Continued on next page

Software

Operating System: Red Hat Enterprise Linux Server release 7.0 (Maipo)
 3.10.0-123.el7.x86_64
 Compiler: C/C++: Version 15.0.0.090 of Intel C++ Studio XE for Linux;
 Fortran: Version 15.0.0.090 of Intel Fortran Studio XE for Linux
 Auto Parallel: Yes
 File System: ext4

Continued on next page



SPEC CFP2006 Result

Copyright 2006-2015 Standard Performance Evaluation Corporation

Huawei

SPECfp2006 = **98.2**

Huawei CH226 V3 (Intel Xeon E5-2620 v3)

SPECfp_base2006 = **93.3**

CPU2006 license: 3175

Test sponsor: Huawei

Tested by: Huawei

Test date: Aug-2015

Hardware Availability: Sep-2014

Software Availability: Sep-2014

L3 Cache: 15 MB I+D on chip per chip
 Other Cache: None
 Memory: 256 GB (16 x 16 GB 2Rx4 PC4-2133P-R, running at 1866 MHz)
 Disk Subsystem: 1 x 500 GB SATA, 7200 RPM
 Other Hardware: None

System State: Run level 3 (multi-user)
 Base Pointers: 64-bit
 Peak Pointers: 32/64-bit
 Other Software: None

Results Table

Benchmark	Base						Peak					
	Seconds	Ratio	Seconds	Ratio	Seconds	Ratio	Seconds	Ratio	Seconds	Ratio	Seconds	Ratio
410.bwaves	39.3	346	34.4	395	34.0	400	39.3	346	34.4	395	34.0	400
416.gamess	567	34.6	568	34.5	567	34.5	480	40.8	478	41.0	477	41.1
433.milc	127	72.2	130	70.6	128	71.6	129	71.3	128	71.6	127	72.2
434.zeusmp	50.8	179	50.5	180	50.6	180	50.8	179	50.5	180	50.6	180
435.gromacs	184	38.9	180	39.6	181	39.4	184	38.9	180	39.6	181	39.4
436.cactusADM	21.0	570	20.4	587	20.9	573	21.0	570	20.4	587	20.9	573
437.leslie3d	43.9	214	43.9	214	43.7	215	43.9	214	43.9	214	43.7	215
444.namd	296	27.1	296	27.1	296	27.1	288	27.8	288	27.8	288	27.9
447.dealII	212	53.9	212	53.8	212	53.9	212	53.9	212	53.8	212	53.9
450.soplex	203	41.0	208	40.1	208	40.1	203	41.0	208	40.1	208	40.1
453.povray	98.1	54.2	98.4	54.1	97.2	54.7	87.0	61.1	86.7	61.3	88.0	60.4
454.calculix	159	51.8	159	51.8	159	51.8	144	57.2	144	57.2	144	57.3
459.GemsFDTD	56.5	188	55.7	190	57.2	186	50.2	211	48.8	217	48.2	220
465.tonto	263	37.4	263	37.4	264	37.2	192	51.2	192	51.2	192	51.1
470.lbm	26.5	518	26.6	517	26.2	524	26.5	518	26.6	517	26.2	524
481.wrf	129	86.8	130	85.8	132	84.5	129	86.8	130	85.8	132	84.5
482.sphinx3	279	70.0	279	69.7	276	70.6	279	70.0	279	69.7	276	70.6

Results appear in the order in which they were run. Bold underlined text indicates a median measurement.

Operating System Notes

Stack size set to unlimited using "ulimit -s unlimited"

Platform Notes

BIOS configuration:
 Set Power Efficiency Mode to Custom
 Set Snoop Mode to ES
 Set Hyper-Threading to Disabled
 Set Patrol Scrub to Disable
 Baseboard Management Controller used to adjust the fan speed to 100%
 Sysinfo program /spec/config/sysinfo.rev6914
 \$Rev: 6914 \$ \$Date:: 2014-06-25 #\$ e3fbb8667b5a285932ceab81e28219e1
 running on localhost.localdomain Fri Aug 28 10:09:03 2015

Continued on next page



SPEC CFP2006 Result

Copyright 2006-2015 Standard Performance Evaluation Corporation

Huawei

SPECfp2006 = 98.2

Huawei CH226 V3 (Intel Xeon E5-2620 v3)

SPECfp_base2006 = 93.3

CPU2006 license: 3175

Test sponsor: Huawei

Tested by: Huawei

Test date: Aug-2015

Hardware Availability: Sep-2014

Software Availability: Sep-2014

Platform Notes (Continued)

This section contains SUT (System Under Test) info as seen by some common utilities. To remove or add to this section, see: <http://www.spec.org/cpu2006/Docs/config.html#sysinfo>

From /proc/cpuinfo

```
model name : Intel(R) Xeon(R) CPU E5-2620 v3 @ 2.40GHz
 2 "physical id"s (chips)
 12 "processors"
```

cores, siblings (Caution: counting these is hw and system dependent. The following excerpts from /proc/cpuinfo might not be reliable. Use with caution.)

```
cpu cores : 6
siblings   : 6
physical 0: cores 0 1 2 3 4 5
physical 1: cores 0 1 2 3 4 5
cache size : 15360 KB
```

From /proc/meminfo

```
MemTotal:      263579832 kB
HugePages_Total: 0
Hugepagesize:   2048 kB
```

From /etc/*release* /etc/*version*

```
os-release:
NAME="Red Hat Enterprise Linux Server"
VERSION="7.0 (Maipo)"
ID="rhel"
ID_LIKE="fedora"
VERSION_ID="7.0"
PRETTY_NAME="Red Hat Enterprise Linux Server 7.0 (Maipo)"
ANSI_COLOR="0;31"
CPE_NAME="cpe:/o:redhat:enterprise_linux:7.0:GA:server"
redhat-release: Red Hat Enterprise Linux Server release 7.0 (Maipo)
system-release: Red Hat Enterprise Linux Server release 7.0 (Maipo)
system-release-cpe: cpe:/o:redhat:enterprise_linux:7.0:ga:server
```

uname -a:

```
Linux localhost.localdomain 3.10.0-123.el7.x86_64 #1 SMP Mon May 5 11:16:57 EDT 2014 x86_64 x86_64 x86_64 GNU/Linux
```

run-level 3 Aug 28 10:07

SPEC is set to: /spec

```
Filesystem      Type      Size      Used Avail Use% Mounted on
/dev/sdb1        ext4      443G      50G  370G  12% /
```

Additional information from dmidecode:

Warning: Use caution when you interpret this section. The 'dmidecode' program reads system data which is "intended to allow hardware to be accurately determined", but the intent may not be met, as there are frequent changes to hardware, firmware, and the "DMTF SMBIOS" standard.

Continued on next page



SPEC CFP2006 Result

Copyright 2006-2015 Standard Performance Evaluation Corporation

Huawei

SPECfp2006 = 98.2

Huawei CH226 V3 (Intel Xeon E5-2620 v3)

SPECfp_base2006 = 93.3

CPU2006 license: 3175

Test sponsor: Huawei

Tested by: Huawei

Test date: Aug-2015

Hardware Availability: Sep-2014

Software Availability: Sep-2014

Platform Notes (Continued)

BIOS Insyde Corp. 1.39 05/06/2015

Memory:

8x NO DIMM NO DIMM 3 rank

8x Samsung M393A2G40DB0-CPB 16 GB 1 rank 2133 MHz, configured at 1867 MHz

8x Samsung M393A2G40DB0-CPB 16 GB 2 rank 2133 MHz, configured at 1867 MHz

(End of data from sysinfo program)

General Notes

Environment variables set by runspec before the start of the run:

KMP_AFFINITY = "granularity=fine,compact,1,0"

LD_LIBRARY_PATH = "/spec/libs/32:/spec/libs/64:/spec/sh"

OMP_NUM_THREADS = "12"

Binaries compiled on a system with 1x Core i5-4670K CPU + 16GB memory using RedHat EL 7.0

Transparent Huge Pages enabled with:

echo always > /sys/kernel/mm/transparent_hugepage/enabled

runspec command invoked through numactl i.e.:

numactl --interleave=all runspec <etc>

Base Compiler Invocation

C benchmarks:

icc -m64

C++ benchmarks:

icpc -m64

Fortran benchmarks:

ifort -m64

Benchmarks using both Fortran and C:

icc -m64 ifort -m64

Base Portability Flags

410.bwaves: -DSPEC_CPU_LP64

416.gamess: -DSPEC_CPU_LP64

433.milc: -DSPEC_CPU_LP64

434.zeusmp: -DSPEC_CPU_LP64

435.gromacs: -DSPEC_CPU_LP64 -nofor_main

436.cactusADM: -DSPEC_CPU_LP64 -nofor_main

437.leslie3d: -DSPEC_CPU_LP64

Continued on next page

Standard Performance Evaluation Corporation

info@spec.org

http://www.spec.org/

Page 4



SPEC CFP2006 Result

Copyright 2006-2015 Standard Performance Evaluation Corporation

Huawei

SPECfp2006 = 98.2

Huawei CH226 V3 (Intel Xeon E5-2620 v3)

SPECfp_base2006 = 93.3

CPU2006 license: 3175

Test date: Aug-2015

Test sponsor: Huawei

Hardware Availability: Sep-2014

Tested by: Huawei

Software Availability: Sep-2014

Base Portability Flags (Continued)

```

444.namd: -DSPEC_CPU_LP64
447.dealII: -DSPEC_CPU_LP64
450.soplex: -DSPEC_CPU_LP64
453.povray: -DSPEC_CPU_LP64
454.calculix: -DSPEC_CPU_LP64 -nofor_main
459.GemsFDTD: -DSPEC_CPU_LP64
465.tonto: -DSPEC_CPU_LP64
470.lbm: -DSPEC_CPU_LP64
481.wrf: -DSPEC_CPU_LP64 -DSPEC_CPU_CASE_FLAG -DSPEC_CPU_LINUX
482.sphinx3: -DSPEC_CPU_LP64

```

Base Optimization Flags

C benchmarks:

```

-xCORE-AVX2 -ipo -O3 -no-prec-div -parallel -opt-prefetch
-ansi-alias

```

C++ benchmarks:

```

-xCORE-AVX2 -ipo -O3 -no-prec-div -opt-prefetch -ansi-alias

```

Fortran benchmarks:

```

-xCORE-AVX2 -ipo -O3 -no-prec-div -parallel -opt-prefetch

```

Benchmarks using both Fortran and C:

```

-xCORE-AVX2 -ipo -O3 -no-prec-div -parallel -opt-prefetch
-ansi-alias

```

Peak Compiler Invocation

C benchmarks:

```

icc -m64

```

C++ benchmarks:

```

icpc -m64

```

Fortran benchmarks:

```

ifort -m64

```

Benchmarks using both Fortran and C:

```

icc -m64 ifort -m64

```



SPEC CFP2006 Result

Copyright 2006-2015 Standard Performance Evaluation Corporation

Huawei

SPECfp2006 = 98.2

Huawei CH226 V3 (Intel Xeon E5-2620 v3)

SPECfp_base2006 = 93.3

CPU2006 license: 3175

Test sponsor: Huawei

Tested by: Huawei

Test date: Aug-2015

Hardware Availability: Sep-2014

Software Availability: Sep-2014

Peak Portability Flags

Same as Base Portability Flags

Peak Optimization Flags

C benchmarks:

433.milc: -xCORE-AVX2(pass 2) -prof-gen(pass 1) -ipo(pass 2)
-O3(pass 2) -no-prec-div(pass 2) -prof-use(pass 2)
-auto-ilp32 -ansi-alias

470.lbm: basepeak = yes

482.sphinx3: basepeak = yes

C++ benchmarks:

444.namd: -xCORE-AVX2(pass 2) -prof-gen(pass 1) -ipo(pass 2)
-O3(pass 2) -no-prec-div(pass 2) -prof-use(pass 2)
-fno-alias -auto-ilp32

447.dealII: basepeak = yes

450.soplex: basepeak = yes

453.povray: -xCORE-AVX2(pass 2) -prof-gen(pass 1) -ipo(pass 2)
-O3(pass 2) -no-prec-div(pass 2) -prof-use(pass 2) -unroll4
-ansi-alias

Fortran benchmarks:

410.bwaves: basepeak = yes

416.gamess: -xCORE-AVX2(pass 2) -prof-gen(pass 1) -ipo(pass 2)
-O3(pass 2) -no-prec-div(pass 2) -prof-use(pass 2) -unroll2
-inline-level=0 -scalar-rep-

434.zeusmp: basepeak = yes

437.leslie3d: basepeak = yes

459.GemsFDTD: -xCORE-AVX2(pass 2) -prof-gen(pass 1) -ipo(pass 2)
-O3(pass 2) -no-prec-div(pass 2) -prof-use(pass 2) -unroll2
-inline-level=0 -opt-prefetch -parallel

465.tonto: -xCORE-AVX2(pass 2) -prof-gen(pass 1) -ipo(pass 2)
-O3(pass 2) -no-prec-div(pass 2) -prof-use(pass 2)
-inline-calloc -opt-malloc-options=3 -auto -unroll4

Continued on next page



SPEC CFP2006 Result

Copyright 2006-2015 Standard Performance Evaluation Corporation

Huawei

SPECfp2006 = 98.2

Huawei CH226 V3 (Intel Xeon E5-2620 v3)

SPECfp_base2006 = 93.3

CPU2006 license: 3175

Test sponsor: Huawei

Tested by: Huawei

Test date: Aug-2015

Hardware Availability: Sep-2014

Software Availability: Sep-2014

Peak Optimization Flags (Continued)

Benchmarks using both Fortran and C:

435.gromacs: basepeak = yes

436.cactusADM: basepeak = yes

454.calculix: -xCORE-AVX2 -ipo -O3 -no-prec-div -auto-ilp32 -ansi-alias

481.wrf: basepeak = yes

The flags files that were used to format this result can be browsed at

<http://www.spec.org/cpu2006/flags/Intel-ic15.0-official-linux64.html>

<http://www.spec.org/cpu2006/flags/Huawei-Platform-Settings-HASWELL-V1.4.html>

You can also download the XML flags sources by saving the following links:

<http://www.spec.org/cpu2006/flags/Intel-ic15.0-official-linux64.xml>

<http://www.spec.org/cpu2006/flags/Huawei-Platform-Settings-HASWELL-V1.4.xml>

SPEC and SPECfp are registered trademarks of the Standard Performance Evaluation Corporation. All other brand and product names appearing in this result are trademarks or registered trademarks of their respective holders.

For questions about this result, please contact the tester.
For other inquiries, please contact webmaster@spec.org.

Tested with SPEC CPU2006 v1.2.

Report generated on Wed Sep 23 11:04:13 2015 by SPEC CPU2006 PS/PDF formatter v6932.

Originally published on 22 September 2015.