



SPEC[®] CFP2006 Result

Copyright 2006-2015 Standard Performance Evaluation Corporation

Fujitsu

SPECfp[®]2006 = 114

PRIMERGY CX2570 M1, Intel Xeon E5-2660 v3, 2.6 GHz

SPECfp_base2006 = 110

CPU2006 license: 19

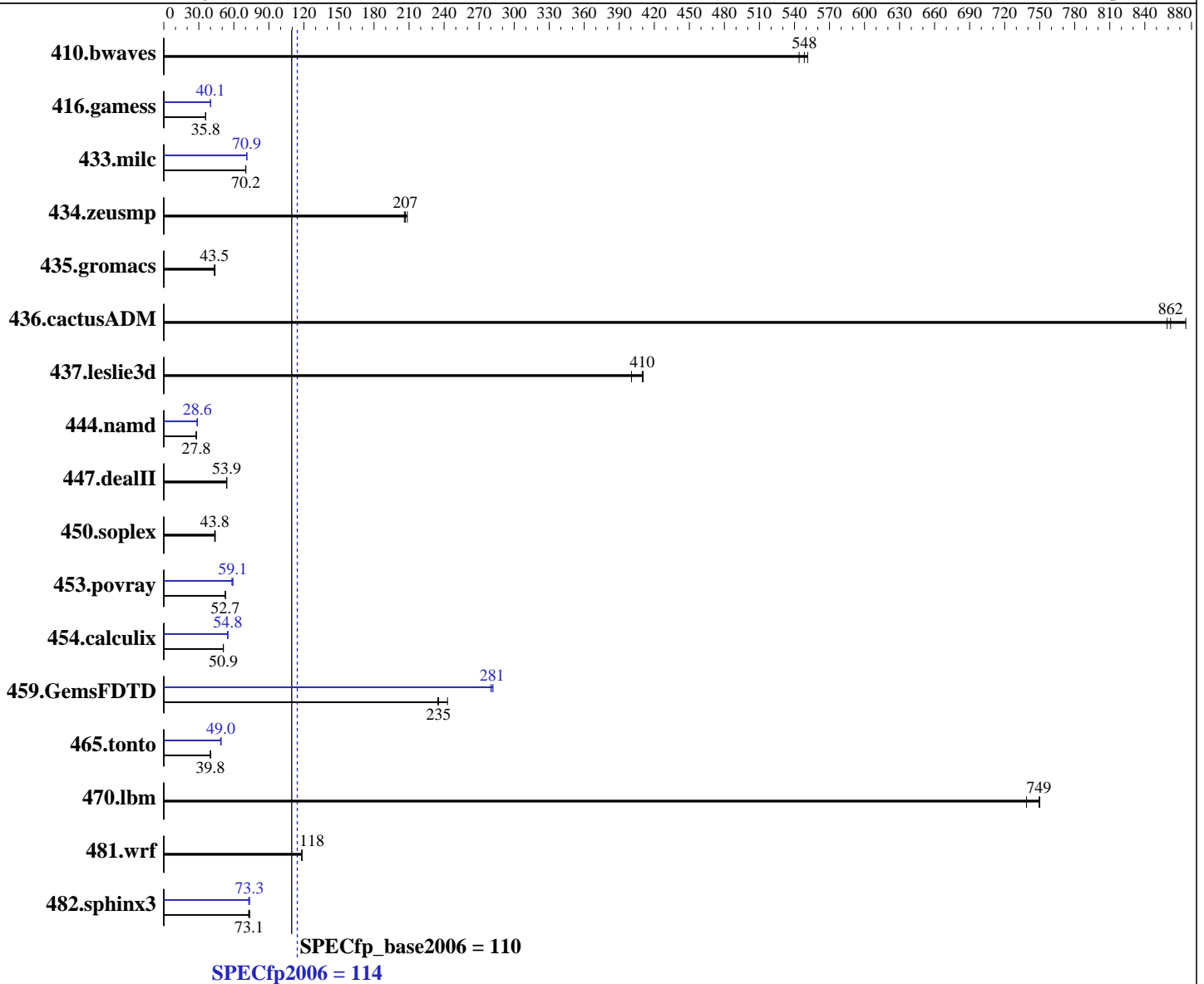
Test date: Nov-2014

Test sponsor: Fujitsu

Hardware Availability: Sep-2014

Tested by: Fujitsu

Software Availability: Sep-2014



Hardware

CPU Name: Intel Xeon E5-2660 v3
 CPU Characteristics: Intel Turbo Boost Technology up to 3.30 GHz
 CPU MHz: 2600
 FPU: Integrated
 CPU(s) enabled: 20 cores, 2 chips, 10 cores/chip, 2 threads/core
 CPU(s) orderable: 1,2 chip
 Primary Cache: 32 KB I + 32 KB D on chip per core
 Secondary Cache: 256 KB I+D on chip per core

Continued on next page

Software

Operating System: Red Hat Enterprise Linux Server release 7.0 (Maipo)
 Kernel 3.10.0-123.8.1.el7.x86_64
 Compiler: C/C++: Version 15.0.0.090 of Intel C++ Studio XE for Linux;
 Fortran: Version 15.0.0.090 of Intel Fortran Studio XE for Linux
 Auto Parallel: Yes
 File System: xfs

Continued on next page



SPEC CFP2006 Result

Copyright 2006-2015 Standard Performance Evaluation Corporation

Fujitsu

SPECfp2006 = **114**

PRIMERGY CX2570 M1, Intel Xeon E5-2660 v3, 2.6 GHz

SPECfp_base2006 = **110**

CPU2006 license: 19

Test date: Nov-2014

Test sponsor: Fujitsu

Hardware Availability: Sep-2014

Tested by: Fujitsu

Software Availability: Sep-2014

L3 Cache: 25 MB I+D on chip per chip
 Other Cache: None
 Memory: 256 GB (16 x 16 GB 2Rx4 PC4-2133P-R)
 Disk Subsystem: 1 x SATA, 500 GB, 7200 RPM
 Other Hardware: None

System State: Run level 3 (multi-user)
 Base Pointers: 64-bit
 Peak Pointers: 32/64-bit
 Other Software: None

Results Table

Benchmark	Base						Peak					
	Seconds	Ratio	Seconds	Ratio	Seconds	Ratio	Seconds	Ratio	Seconds	Ratio	Seconds	Ratio
410.bwaves	24.7	551	<u>24.8</u>	<u>548</u>	25.0	544	24.7	551	<u>24.8</u>	<u>548</u>	25.0	544
416.gamess	547	35.8	<u>547</u>	<u>35.8</u>	546	35.9	487	40.2	<u>488</u>	<u>40.1</u>	490	40.0
433.milc	131	70.1	131	70.3	<u>131</u>	<u>70.2</u>	129	71.2	129	70.9	<u>129</u>	<u>70.9</u>
434.zeusmp	<u>44.0</u>	<u>207</u>	44.2	206	43.6	209	<u>44.0</u>	<u>207</u>	44.2	206	43.6	209
435.gromacs	165	43.2	<u>164</u>	<u>43.5</u>	163	43.9	165	43.2	<u>164</u>	<u>43.5</u>	163	43.9
436.cactusADM	<u>13.9</u>	<u>862</u>	13.9	859	13.7	875	<u>13.9</u>	<u>862</u>	13.9	859	13.7	875
437.leslie3d	22.9	410	<u>22.9</u>	<u>410</u>	23.5	401	22.9	410	<u>22.9</u>	<u>410</u>	23.5	401
444.namd	<u>288</u>	<u>27.8</u>	288	27.9	288	27.8	280	28.6	<u>280</u>	<u>28.6</u>	280	28.7
447.dealII	213	53.8	<u>212</u>	<u>53.9</u>	212	53.9	213	53.8	<u>212</u>	<u>53.9</u>	212	53.9
450.soplex	189	44.1	<u>191</u>	<u>43.8</u>	191	43.6	189	44.1	<u>191</u>	<u>43.8</u>	191	43.6
453.povray	101	52.6	<u>101</u>	<u>52.7</u>	100	52.9	89.9	59.2	91.3	58.3	<u>90.1</u>	<u>59.1</u>
454.calculix	162	51.1	162	50.9	<u>162</u>	<u>50.9</u>	150	54.9	151	54.8	<u>151</u>	<u>54.8</u>
459.GemsFDTD	45.2	235	<u>45.1</u>	<u>235</u>	43.7	243	37.6	282	37.9	280	<u>37.7</u>	<u>281</u>
465.tonto	245	40.2	247	39.8	<u>247</u>	<u>39.8</u>	202	48.6	201	49.0	<u>201</u>	<u>49.0</u>
470.lbm	<u>18.3</u>	<u>749</u>	18.3	750	18.6	739	<u>18.3</u>	<u>749</u>	18.3	750	18.6	739
481.wrf	94.5	118	<u>94.5</u>	<u>118</u>	94.5	118	94.5	118	<u>94.5</u>	<u>118</u>	94.5	118
482.sphinx3	<u>267</u>	<u>73.1</u>	268	72.6	265	73.6	265	73.4	268	72.7	<u>266</u>	<u>73.3</u>

Results appear in the order in which they were run. Bold underlined text indicates a median measurement.

Operating System Notes

Stack size set to unlimited using "ulimit -s unlimited"

Platform Notes

BIOS configuration:
 Energy Performance = Performance
 Utilization Profile = Unbalanced
 QPI snoop mode: Home Snoop
 COD Enable = Disabled, Early Snoop = Disabled
 CPU C1E Support = Disabled



SPEC CFP2006 Result

Copyright 2006-2015 Standard Performance Evaluation Corporation

Fujitsu

SPECfp2006 = 114

PRIMERGY CX2570 M1, Intel Xeon E5-2660 v3, 2.6 GHz

SPECfp_base2006 = 110

CPU2006 license: 19

Test date: Nov-2014

Test sponsor: Fujitsu

Hardware Availability: Sep-2014

Tested by: Fujitsu

Software Availability: Sep-2014

General Notes

Environment variables set by runspec before the start of the run:

KMP_AFFINITY = "granularity=fine,compact,1,0"

LD_LIBRARY_PATH = "/home/SPECcpu2006/libs/32:/home/SPECcpu2006/libs/64:/home/SPECcpu2006/sh"

OMP_NUM_THREADS = "20"

Binaries compiled on a system with 1x Core i5-4670K CPU + 16GB memory using RedHat EL 7.0

This result was measured on the PRIMERGY CX2550 M1. The PRIMERGY CX2550 M1 and the PRIMERGY CX2570 M1 are electronically equivalent.

For information about Fujitsu please visit: <http://www.fujitsu.com>

Base Compiler Invocation

C benchmarks:

icc -m64

C++ benchmarks:

icpc -m64

Fortran benchmarks:

ifort -m64

Benchmarks using both Fortran and C:

icc -m64 ifort -m64

Base Portability Flags

410.bwaves: -DSPEC_CPU_LP64
 416.gamess: -DSPEC_CPU_LP64
 433.milc: -DSPEC_CPU_LP64
 434.zeusmp: -DSPEC_CPU_LP64
 435.gromacs: -DSPEC_CPU_LP64 -nofor_main
 436.cactusADM: -DSPEC_CPU_LP64 -nofor_main
 437.leslie3d: -DSPEC_CPU_LP64
 444.namd: -DSPEC_CPU_LP64
 447.deallI: -DSPEC_CPU_LP64
 450.soplex: -DSPEC_CPU_LP64
 453.povray: -DSPEC_CPU_LP64
 454.calculix: -DSPEC_CPU_LP64 -nofor_main
 459.GemsFDTD: -DSPEC_CPU_LP64
 465.tonto: -DSPEC_CPU_LP64
 470.lbm: -DSPEC_CPU_LP64
 481.wrf: -DSPEC_CPU_LP64 -DSPEC_CPU_CASE_FLAG -DSPEC_CPU_LINUX
 482.sphinx3: -DSPEC_CPU_LP64



SPEC CFP2006 Result

Copyright 2006-2015 Standard Performance Evaluation Corporation

Fujitsu

SPECfp2006 = 114

PRIMERGY CX2570 M1, Intel Xeon E5-2660 v3, 2.6 GHz

SPECfp_base2006 = 110

CPU2006 license: 19

Test date: Nov-2014

Test sponsor: Fujitsu

Hardware Availability: Sep-2014

Tested by: Fujitsu

Software Availability: Sep-2014

Base Optimization Flags

C benchmarks:

-xCORE-AVX2 -ipo -O3 -no-prec-div -parallel -opt-prefetch
-ansi-alias

C++ benchmarks:

-xCORE-AVX2 -ipo -O3 -no-prec-div -opt-prefetch -ansi-alias

Fortran benchmarks:

-xCORE-AVX2 -ipo -O3 -no-prec-div -parallel -opt-prefetch

Benchmarks using both Fortran and C:

-xCORE-AVX2 -ipo -O3 -no-prec-div -parallel -opt-prefetch
-ansi-alias

Peak Compiler Invocation

C benchmarks:

icc -m64

C++ benchmarks:

icpc -m64

Fortran benchmarks:

ifort -m64

Benchmarks using both Fortran and C:

icc -m64 ifort -m64

Peak Portability Flags

Same as Base Portability Flags

Peak Optimization Flags

C benchmarks:

433.milc: -xCORE-AVX2(pass 2) -prof-gen(pass 1) -ipo(pass 2)
-O3(pass 2) -no-prec-div(pass 2) -prof-use(pass 2)
-auto-ilp32 -ansi-alias

470.lbm: basepeak = yes

482.sphinx3: -xCORE-AVX2 -ipo -O3 -no-prec-div -unroll2 -ansi-alias
-parallel

Continued on next page



SPEC CFP2006 Result

Copyright 2006-2015 Standard Performance Evaluation Corporation

Fujitsu

SPECfp2006 = 114

PRIMERGY CX2570 M1, Intel Xeon E5-2660 v3, 2.6 GHz

SPECfp_base2006 = 110

CPU2006 license: 19

Test date: Nov-2014

Test sponsor: Fujitsu

Hardware Availability: Sep-2014

Tested by: Fujitsu

Software Availability: Sep-2014

Peak Optimization Flags (Continued)

C++ benchmarks:

444.namd: -xCORE-AVX2(pass 2) -prof-gen(pass 1) -ipo(pass 2)
-O3(pass 2) -no-prec-div(pass 2) -prof-use(pass 2)
-fno-alias -auto-ilp32

447.dealII: basepeak = yes

450.soplex: basepeak = yes

453.povray: -xCORE-AVX2(pass 2) -prof-gen(pass 1) -ipo(pass 2)
-O3(pass 2) -no-prec-div(pass 2) -prof-use(pass 2) -unroll4
-ansi-alias

Fortran benchmarks:

410.bwaves: basepeak = yes

416.gamess: -xCORE-AVX2(pass 2) -prof-gen(pass 1) -ipo(pass 2)
-O3(pass 2) -no-prec-div(pass 2) -prof-use(pass 2) -unroll2
-inline-level=0 -scalar-rep-

434.zeusmp: basepeak = yes

437.leslie3d: basepeak = yes

459.GemsFDTD: -xCORE-AVX2(pass 2) -prof-gen(pass 1) -ipo(pass 2)
-O3(pass 2) -no-prec-div(pass 2) -prof-use(pass 2) -unroll2
-inline-level=0 -opt-prefetch -parallel

465.tonto: -xCORE-AVX2(pass 2) -prof-gen(pass 1) -ipo(pass 2)
-O3(pass 2) -no-prec-div(pass 2) -prof-use(pass 2)
-inline-calloc -opt-malloc-options=3 -auto -unroll4

Benchmarks using both Fortran and C:

435.gromacs: basepeak = yes

436.cactusADM: basepeak = yes

454.calculix: -xCORE-AVX2 -ipo -O3 -no-prec-div -auto-ilp32 -ansi-alias

481.wrf: basepeak = yes

The flags files that were used to format this result can be browsed at

<http://www.spec.org/cpu2006/flags/Intel-ic15.0-official-linux64.html>

<http://www.spec.org/cpu2006/flags/Fujitsu-Platform-Settings-V1.2-HSW-RevA.html>



SPEC CFP2006 Result

Copyright 2006-2015 Standard Performance Evaluation Corporation

Fujitsu

SPECfp2006 = 114

PRIMERGY CX2570 M1, Intel Xeon E5-2660 v3, 2.6 GHz

SPECfp_base2006 = 110

CPU2006 license: 19

Test sponsor: Fujitsu

Tested by: Fujitsu

Test date: Nov-2014

Hardware Availability: Sep-2014

Software Availability: Sep-2014

You can also download the XML flags sources by saving the following links:

<http://www.spec.org/cpu2006/flags/Intel-ic15.0-official-linux64.xml>

<http://www.spec.org/cpu2006/flags/Fujitsu-Platform-Settings-V1.2-HSW-RevA.xml>

SPEC and SPECfp are registered trademarks of the Standard Performance Evaluation Corporation. All other brand and product names appearing in this result are trademarks or registered trademarks of their respective holders.

For questions about this result, please contact the tester.
For other inquiries, please contact webmaster@spec.org.

Tested with SPEC CPU2006 v1.2.
Report generated on Tue Feb 10 18:30:54 2015 by SPEC CPU2006 PS/PDF formatter v6932.
Originally published on 10 February 2015.