



SPEC® CINT2006 Result

Copyright 2006-2014 Standard Performance Evaluation Corporation

Hewlett-Packard Company

SPECint®2006 = 61.4

ProLiant BL460c Gen9
(2.60 GHz, Intel Xeon E5-2660 v3)

SPECint_base2006 = 58.5

CPU2006 license: 3

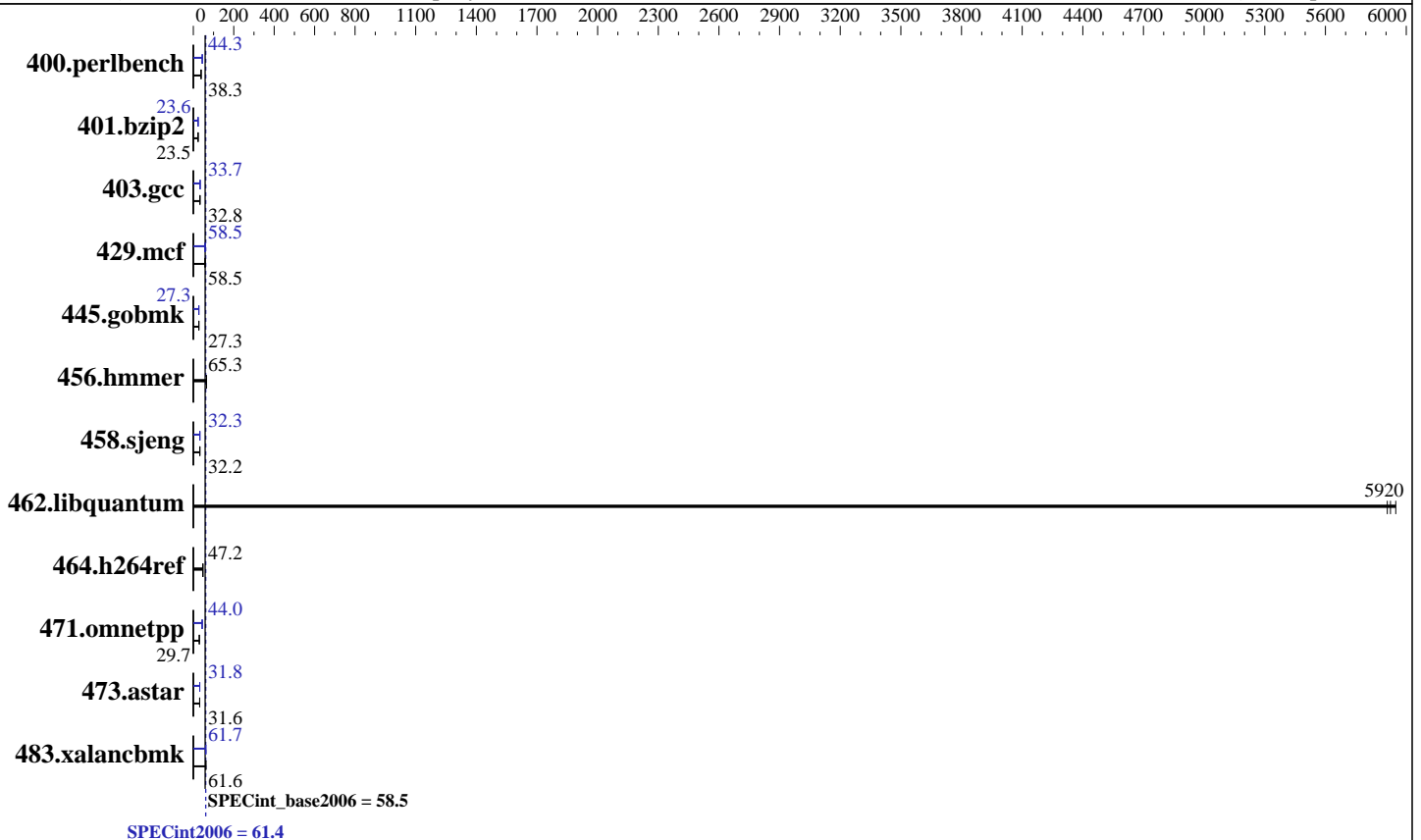
Test date: Nov-2014

Test sponsor: Hewlett-Packard Company

Hardware Availability: Sep-2014

Tested by: Hewlett-Packard Company

Software Availability: Sep-2014



Hardware

CPU Name: Intel Xeon E5-2660 v3
 CPU Characteristics: Intel Turbo Boost Technology up to 3.30 GHz
 CPU MHz: 2600
 FPU: Integrated
 CPU(s) enabled: 20 cores, 2 chips, 10 cores/chip
 CPU(s) orderable: 1,2 chips
 Primary Cache: 32 KB I + 32 KB D on chip per core
 Secondary Cache: 256 KB I+D on chip per core
 L3 Cache: 25 MB I+D on chip per chip
 Other Cache: None
 Memory: 256 GB (16 x 16 GB 2Rx4 PC4-2133P-R)
 Disk Subsystem: 2 x 400 GB SAS SSD, RAID 1
 Other Hardware: None

Software

Operating System: Red Hat Enterprise Linux Server release 7.0 (Maipo)
 Kernel 3.10.0-123.el7.x86_64
 Compiler: C/C++: Version 15.0.0.090 of Intel C++ Studio XE for Linux
 Auto Parallel: Yes
 File System: xfs
 System State: Run level 3 (multi-user)
 Base Pointers: 32/64-bit
 Peak Pointers: 32/64-bit
 Other Software: Microquill SmartHeap V10.0



SPEC CINT2006 Result

Copyright 2006-2014 Standard Performance Evaluation Corporation

Hewlett-Packard Company

ProLiant BL460c Gen9
(2.60 GHz, Intel Xeon E5-2660 v3)

SPECint2006 = **61.4**

SPECint_base2006 = **58.5**

CPU2006 license: 3
Test sponsor: Hewlett-Packard Company
Tested by: Hewlett-Packard Company

Test date: Nov-2014
Hardware Availability: Sep-2014
Software Availability: Sep-2014

Results Table

Benchmark	Base						Peak					
	Seconds	Ratio	Seconds	Ratio	Seconds	Ratio	Seconds	Ratio	Seconds	Ratio	Seconds	Ratio
400.perlbench	<u>255</u>	<u>38.3</u>	255	38.4	256	38.2	221	44.2	221	44.3	<u>221</u>	<u>44.3</u>
401.bzip2	412	23.4	<u>411</u>	<u>23.5</u>	409	23.6	<u>408</u>	<u>23.6</u>	408	23.6	408	23.6
403.gcc	246	32.8	247	32.6	<u>246</u>	<u>32.8</u>	241	33.4	239	33.7	<u>239</u>	<u>33.7</u>
429.mcf	158	57.7	155	58.8	<u>156</u>	<u>58.5</u>	155	58.7	157	58.2	<u>156</u>	<u>58.5</u>
445.gobmk	<u>384</u>	<u>27.3</u>	384	27.3	385	27.3	<u>385</u>	<u>27.3</u>	384	27.3	385	27.3
456.hammer	143	65.4	<u>143</u>	<u>65.3</u>	143	65.3	143	65.4	<u>143</u>	<u>65.3</u>	143	65.3
458.sjeng	376	32.1	<u>376</u>	<u>32.2</u>	376	32.2	375	32.3	375	32.3	<u>375</u>	<u>32.3</u>
462.libquantum	<u>3.50</u>	<u>5920</u>	3.48	5950	3.51	5910	<u>3.50</u>	<u>5920</u>	3.48	5950	3.51	5910
464.h264ref	<u>469</u>	<u>47.2</u>	467	47.3	470	47.1	<u>469</u>	<u>47.2</u>	467	47.3	470	47.1
471.omnetpp	208	30.0	212	29.5	<u>210</u>	<u>29.7</u>	<u>142</u>	<u>44.0</u>	140	44.5	146	42.9
473.astar	222	31.6	<u>222</u>	<u>31.6</u>	225	31.1	223	31.5	220	31.9	<u>221</u>	<u>31.8</u>
483.xalancbmk	<u>112</u>	<u>61.6</u>	112	61.4	111	62.3	112	61.7	112	61.7	<u>112</u>	<u>61.7</u>

Results appear in the order in which they were run. Bold underlined text indicates a median measurement.

Submit Notes

The config file option 'submit' was used.

Operating System Notes

Stack size set to unlimited using "ulimit -s unlimited"
Transparent Huge Pages enabled with:
echo always > /sys/kernel/mm/redhat_transparent_hugepage/enabled

Platform Notes

BIOS Configuration:
HP Power Profile set to Custom
HP Power Regulator to HP Static High Performance Mode
Minimum Processor Idle Power Core State set to C6 State
Minimum Processor Idle Power Package State set to No Package State
QPI Snoop Configuration set to Early Snoop
Thermal Configuration set to Maximum Cooling
Collaborative Power Control set to Disabled
Processor Power and Utilization Monitoring set to Disabled
Memory Double Refresh Rate set to 1x Refresh
Intel Hyperthreading Options set to Disabled

Sysinfo program /cpu2006/config/sysinfo.rev6914
\$Rev: 6914 \$ \$Date:: 2014-06-25 #\$ e3fbb8667b5a285932ceab81e28219e1
running on X-bl460c_gen9-VP2.1 Sat Nov 29 23:12:54 2014

This section contains SUT (System Under Test) info as seen by
Continued on next page



SPEC CINT2006 Result

Copyright 2006-2014 Standard Performance Evaluation Corporation

Hewlett-Packard Company

SPECint2006 = **61.4**

ProLiant BL460c Gen9
(2.60 GHz, Intel Xeon E5-2660 v3)

SPECint_base2006 = **58.5**

CPU2006 license: 3

Test date: Nov-2014

Test sponsor: Hewlett-Packard Company

Hardware Availability: Sep-2014

Tested by: Hewlett-Packard Company

Software Availability: Sep-2014

Platform Notes (Continued)

some common utilities. To remove or add to this section, see:
<http://www.spec.org/cpu2006/Docs/config.html#sysinfo>

```

From /proc/cpuinfo
model name      : Intel(R) Xeon(R) CPU E5-2660 v3 @ 2.60GHz
 2 "physical id"s (chips)
 20 "processors"
cores, siblings (Caution: counting these is hw and system dependent. The
following excerpts from /proc/cpuinfo might not be reliable. Use with
caution.)
  cpu cores    : 10
  siblings     : 10
  physical 0   : cores 0 2 3 4 8 9 10 11 12
  physical 1   : cores 0 2 3 4 8 9 10 11 12
cache size     : 25600 KB

```

```

From /proc/meminfo
MemTotal:      263845756 kB
HugePages_Total: 0
Hugepagesize:  2048 kB

```

```

From /etc/*release* /etc/*version*
os-release:
NAME="Red Hat Enterprise Linux Server"
VERSION="7.0 (Maipo)"
ID="rhel"
ID_LIKE="fedora"
VERSION_ID="7.0"
PRETTY_NAME="Red Hat Enterprise Linux Server 7.0 (Maipo)"
ANSI_COLOR="0;31"
CPE_NAME="cpe:/o:redhat:enterprise_linux:7.0:GA:server"
redhat-release: Red Hat Enterprise Linux Server release 7.0 (Maipo)
system-release: Red Hat Enterprise Linux Server release 7.0 (Maipo)
system-release-cpe: cpe:/o:redhat:enterprise_linux:7.0:ga:server

```

```

uname -a:
Linux X-bl460c_gen9-VP2.1 3.10.0-123.el7.x86_64 #1 SMP Mon May 5 11:16:57 EDT
2014 x86_64 x86_64 x86_64 GNU/Linux

```

run-level 3 Nov 29 23:07

```

SPEC is set to: /cpu2006
Filesystem      Type  Size  Used Avail Use% Mounted on
/dev/sda4       xfs   277G  92G  186G  34% /

```

Additional information from dmidecode:

Warning: Use caution when you interpret this section. The 'dmidecode' program reads system data which is "intended to allow hardware to be accurately determined", but the intent may not be met, as there are frequent changes to hardware, firmware, and the "DMTF SMBIOS" standard.

BIOS HP I36 08/26/2014

Continued on next page



SPEC CINT2006 Result

Copyright 2006-2014 Standard Performance Evaluation Corporation

Hewlett-Packard Company

SPECint2006 = 61.4

ProLiant BL460c Gen9
(2.60 GHz, Intel Xeon E5-2660 v3)

SPECint_base2006 = 58.5

CPU2006 license: 3

Test date: Nov-2014

Test sponsor: Hewlett-Packard Company

Hardware Availability: Sep-2014

Tested by: Hewlett-Packard Company

Software Availability: Sep-2014

Platform Notes (Continued)

Memory:

2x HP 752369-081 16 GB 2 rank 2133 MHz
14x HP NOT AVAILABLE 16 GB 2 rank 2133 MHz

(End of data from sysinfo program)

General Notes

Environment variables set by runspec before the start of the run:

KMP_AFFINITY = "granularity=fine,scatter"
LD_LIBRARY_PATH = "/cpu2006/libs/32:/cpu2006/libs/64:/cpu2006/sh"
OMP_NUM_THREADS = "20"

Binaries compiled on a system with 1x Core i5-4670K CPU + 16GB
memory using RedHat EL 7.0

Base Compiler Invocation

C benchmarks:

icc -m64

C++ benchmarks:

icpc -m64

Base Portability Flags

400.perlbench: -DSPEC_CPU_LP64 -DSPEC_CPU_LINUX_X64
401.bzip2: -DSPEC_CPU_LP64
403.gcc: -DSPEC_CPU_LP64
429.mcf: -DSPEC_CPU_LP64
445.gobmk: -DSPEC_CPU_LP64
456.hmmer: -DSPEC_CPU_LP64
458.sjeng: -DSPEC_CPU_LP64
462.libquantum: -DSPEC_CPU_LP64 -DSPEC_CPU_LINUX
464.h264ref: -DSPEC_CPU_LP64
471.omnetpp: -DSPEC_CPU_LP64
473.astar: -DSPEC_CPU_LP64
483.xalancbmk: -DSPEC_CPU_LP64 -DSPEC_CPU_LINUX

Base Optimization Flags

C benchmarks:

-xCORE-AVX2 -ipo -O3 -no-prec-div -parallel -opt-prefetch -auto-p32

Continued on next page



SPEC CINT2006 Result

Copyright 2006-2014 Standard Performance Evaluation Corporation

Hewlett-Packard Company

SPECint2006 = 61.4

ProLiant BL460c Gen9
(2.60 GHz, Intel Xeon E5-2660 v3)

SPECint_base2006 = 58.5

CPU2006 license: 3

Test date: Nov-2014

Test sponsor: Hewlett-Packard Company

Hardware Availability: Sep-2014

Tested by: Hewlett-Packard Company

Software Availability: Sep-2014

Base Optimization Flags (Continued)

C++ benchmarks:

-xCORE-AVX2 -ipo -O3 -no-prec-div -opt-prefetch -auto-p32
-Wl,-z,muldefs -L/sh -lsmartheap64

Base Other Flags

C benchmarks:

403.gcc: -Dalloca=_alloca

Peak Compiler Invocation

C benchmarks (except as noted below):

icc -m64

400.perlbench: icc -m32 -L/opt/intel/composer_xe_2015/lib/ia32

445.gobmk: icc -m32 -L/opt/intel/composer_xe_2015/lib/ia32

C++ benchmarks (except as noted below):

icpc -m32 -L/opt/intel/composer_xe_2015/lib/ia32

473.astar: icpc -m64

Peak Portability Flags

400.perlbench: -DSPEC_CPU_LINUX_IA32

401.bzip2: -DSPEC_CPU_LP64

403.gcc: -DSPEC_CPU_LP64

429.mcf: -DSPEC_CPU_LP64

456.hmmer: -DSPEC_CPU_LP64

458.sjeng: -DSPEC_CPU_LP64

462.libquantum: -DSPEC_CPU_LP64 -DSPEC_CPU_LINUX

464.h264ref: -DSPEC_CPU_LP64

473.astar: -DSPEC_CPU_LP64

483.xalancbmk: -DSPEC_CPU_LINUX

Peak Optimization Flags

C benchmarks:

Continued on next page



SPEC CINT2006 Result

Copyright 2006-2014 Standard Performance Evaluation Corporation

Hewlett-Packard Company

SPECint2006 = 61.4

ProLiant BL460c Gen9
(2.60 GHz, Intel Xeon E5-2660 v3)

SPECint_base2006 = 58.5

CPU2006 license: 3

Test date: Nov-2014

Test sponsor: Hewlett-Packard Company

Hardware Availability: Sep-2014

Tested by: Hewlett-Packard Company

Software Availability: Sep-2014

Peak Optimization Flags (Continued)

400.perlbench: -xCORE-AVX2(pass 2) -prof-gen(pass 1) -ipo(pass 2)
-O3(pass 2) -no-prec-div(pass 2) -prof-use(pass 2)
-opt-prefetch -ansi-alias

401.bzip2: -xCORE-AVX2(pass 2) -prof-gen(pass 1) -ipo(pass 2)
-O3(pass 2) -no-prec-div -prof-use(pass 2) -auto-ilp32
-opt-prefetch -ansi-alias

403.gcc: -xCORE-AVX2 -ipo -O3 -no-prec-div -inline-calloc
-opt-malloc-options=3 -auto-ilp32

429.mcf: -xCORE-AVX2 -ipo -O3 -no-prec-div -parallel
-opt-prefetch -auto-p32

445.gobmk: -xCORE-AVX2(pass 2) -prof-gen(pass 1) -prof-use(pass 2)
-ansi-alias

456.hmmmer: basepeak = yes

458.sjeng: -xCORE-AVX2(pass 2) -prof-gen(pass 1) -ipo(pass 2)
-O3(pass 2) -no-prec-div(pass 2) -prof-use(pass 2)
-unroll4

462.libquantum: basepeak = yes

464.h264ref: basepeak = yes

C++ benchmarks:

471.omnetpp: -xCORE-AVX2(pass 2) -prof-gen(pass 1) -ipo(pass 2)
-O3(pass 2) -no-prec-div(pass 2) -prof-use(pass 2)
-opt-ra-region-strategy=block -ansi-alias
-Wl,-z,muldefs -L/sh -lsmartheap

473.astar: -xCORE-AVX2 -ipo -O3 -no-prec-div -opt-prefetch
-auto-p32 -Wl,-z,muldefs -L/sh -lsmartheap64

483.xalancbmk: -xCORE-AVX2 -ipo -O3 -no-prec-div -opt-prefetch
-ansi-alias -Wl,-z,muldefs -L/sh -lsmartheap

Peak Other Flags

C benchmarks:

403.gcc: -Dalloca=_alloca



SPEC CINT2006 Result

Copyright 2006-2014 Standard Performance Evaluation Corporation

Hewlett-Packard Company

SPECint2006 = 61.4

ProLiant BL460c Gen9
(2.60 GHz, Intel Xeon E5-2660 v3)

SPECint_base2006 = 58.5

CPU2006 license: 3

Test date: Nov-2014

Test sponsor: Hewlett-Packard Company

Hardware Availability: Sep-2014

Tested by: Hewlett-Packard Company

Software Availability: Sep-2014

The flags files that were used to format this result can be browsed at

<http://www.spec.org/cpu2006/flags/Intel-ic15.0-official-linux64.html>

<http://www.spec.org/cpu2006/flags/HP-Platform-Flags-Intel-V1.2-HSW-revE.html>

You can also download the XML flags sources by saving the following links:

<http://www.spec.org/cpu2006/flags/Intel-ic15.0-official-linux64.xml>

<http://www.spec.org/cpu2006/flags/HP-Platform-Flags-Intel-V1.2-HSW-revE.xml>

SPEC and SPECint are registered trademarks of the Standard Performance Evaluation Corporation. All other brand and product names appearing in this result are trademarks or registered trademarks of their respective holders.

For questions about this result, please contact the tester.
For other inquiries, please contact webmaster@spec.org.

Tested with SPEC CPU2006 v1.2.
Report generated on Tue Dec 16 13:12:22 2014 by SPEC CPU2006 PS/PDF formatter v6932.
Originally published on 16 December 2014.