



# SPEC® CFP2006 Result

Copyright 2006-2014 Standard Performance Evaluation Corporation

## Hewlett-Packard Company

SPECfp®2006 = **115**

ProLiant DL380 Gen9  
(2.60 GHz, Intel Xeon E5-2690 v3)

SPECfp\_base2006 = **110**

CPU2006 license: 3

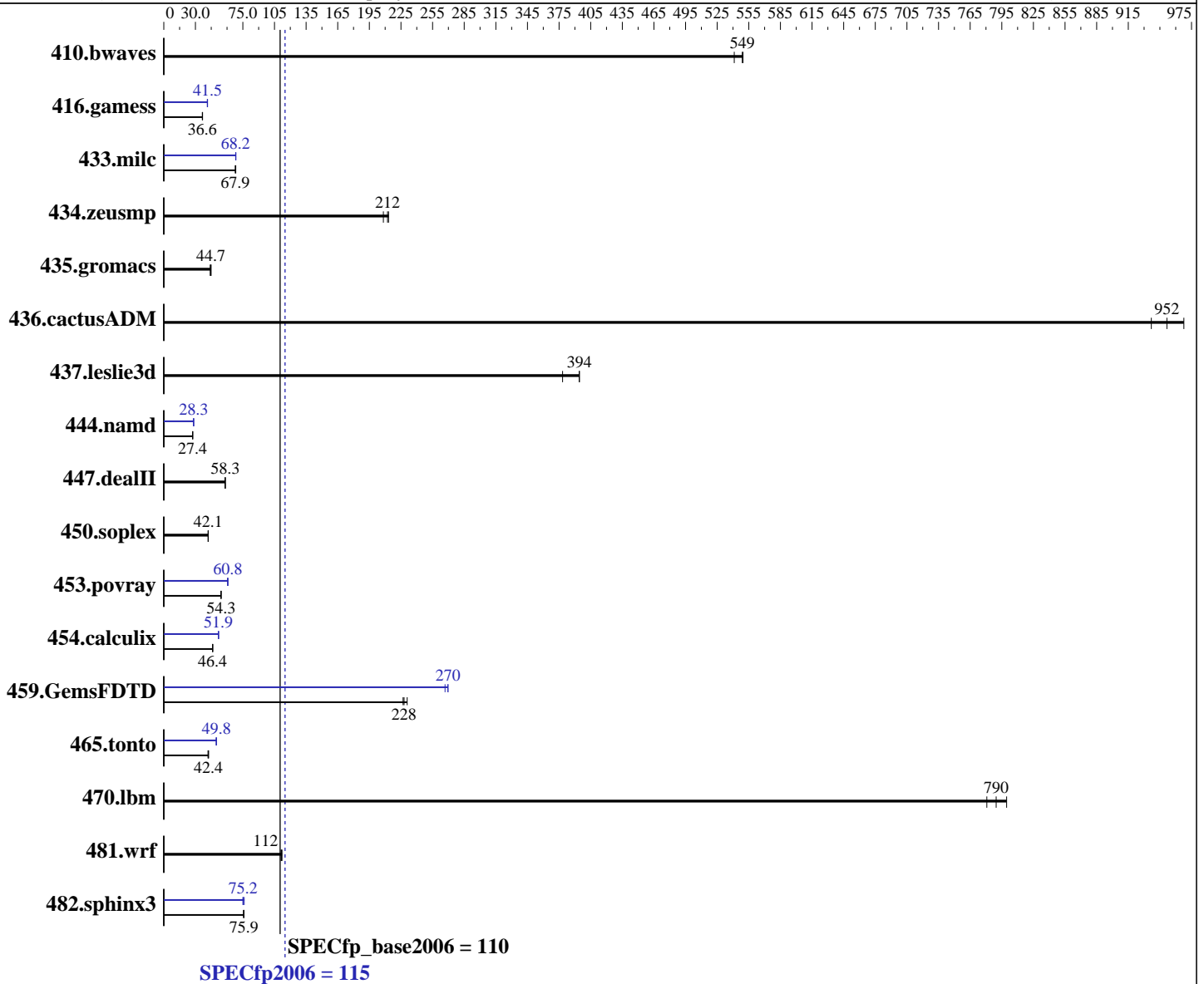
Test date: Oct-2014

Test sponsor: Hewlett-Packard Company

Hardware Availability: Sep-2014

Tested by: Hewlett-Packard Company

Software Availability: Jun-2014



**Hardware**

CPU Name: Intel Xeon E5-2690 v3  
 CPU Characteristics: Intel Turbo Boost Technology up to 3.50 GHz  
 CPU MHz: 2600  
 FPU: Integrated  
 CPU(s) enabled: 24 cores, 2 chips, 12 cores/chip  
 CPU(s) orderable: 1,2 chips  
 Primary Cache: 32 KB I + 32 KB D on chip per core  
 Secondary Cache: 256 KB I+D on chip per core

Continued on next page

**Software**

Operating System: Red Hat Enterprise Linux Server release 7.0 (Maipo)  
 Kernel 3.10.0-121.el7.x86\_64  
 Compiler: C/C++: Version 14.0.0.080 of Intel C++ Studio XE for Linux;  
 Fortran: Version 14.0.0.080 of Intel Fortran Studio XE for Linux  
 Auto Parallel: Yes  
 File System: ext4

Continued on next page



# SPEC CFP2006 Result

Copyright 2006-2014 Standard Performance Evaluation Corporation

## Hewlett-Packard Company

SPECfp2006 = **115**

ProLiant DL380 Gen9  
(2.60 GHz, Intel Xeon E5-2690 v3)

SPECfp\_base2006 = **110**

CPU2006 license: 3  
Test sponsor: Hewlett-Packard Company  
Tested by: Hewlett-Packard Company

Test date: Oct-2014  
Hardware Availability: Sep-2014  
Software Availability: Jun-2014

L3 Cache: 30 MB I+D on chip per chip  
Other Cache: None  
Memory: 256 GB (16 x 16 GB 2Rx4 PC4-2133P-R)  
Disk Subsystem: 1 x 400 GB SAS SSD, RAID 0  
Other Hardware: None

System State: Run level 3 (multi-user)  
Base Pointers: 64-bit  
Peak Pointers: 32/64-bit  
Other Software: None

## Results Table

| Benchmark     | Base               |                    |                   |                    |                    |                    | Peak               |                    |                   |                    |                    |                    |
|---------------|--------------------|--------------------|-------------------|--------------------|--------------------|--------------------|--------------------|--------------------|-------------------|--------------------|--------------------|--------------------|
|               | Seconds            | Ratio              | Seconds           | Ratio              | Seconds            | Ratio              | Seconds            | Ratio              | Seconds           | Ratio              | Seconds            | Ratio              |
| 410.bwaves    | <b><u>24.8</u></b> | <b><u>549</u></b>  | 24.7              | 550                | 25.1               | 541                | <b><u>24.8</u></b> | <b><u>549</u></b>  | 24.7              | 550                | 25.1               | 541                |
| 416.gamess    | 532                | 36.8               | <b><u>534</u></b> | <b><u>36.6</u></b> | 536                | 36.6               | 472                | 41.5               | <b><u>472</u></b> | <b><u>41.5</u></b> | 475                | 41.2               |
| 433.milc      | 135                | 67.9               | 134               | 68.3               | <b><u>135</u></b>  | <b><u>67.9</u></b> | 135                | 68.2               | 134               | 68.4               | <b><u>135</u></b>  | <b><u>68.2</u></b> |
| 434.zeusmp    | 42.7               | 213                | 43.7              | 208                | <b><u>42.9</u></b> | <b><u>212</u></b>  | 42.7               | 213                | 43.7              | 208                | <b><u>42.9</u></b> | <b><u>212</u></b>  |
| 435.gromacs   | 162                | 44.0               | 160               | 44.8               | <b><u>160</u></b>  | <b><u>44.7</u></b> | 162                | 44.0               | 160               | 44.8               | <b><u>160</u></b>  | <b><u>44.7</u></b> |
| 436.cactusADM | 12.8               | 937                | 12.3              | 968                | <b><u>12.6</u></b> | <b><u>952</u></b>  | 12.8               | 937                | 12.3              | 968                | <b><u>12.6</u></b> | <b><u>952</u></b>  |
| 437.leslie3d  | <b><u>23.8</u></b> | <b><u>394</u></b>  | 23.8              | 394                | 24.8               | 378                | <b><u>23.8</u></b> | <b><u>394</u></b>  | 23.8              | 394                | 24.8               | 378                |
| 444.namd      | 293                | 27.4               | <b><u>293</u></b> | <b><u>27.4</u></b> | 293                | 27.4               | <b><u>284</u></b>  | <b><u>28.3</u></b> | 284               | 28.3               | 283                | 28.3               |
| 447.dealII    | <b><u>196</u></b>  | <b><u>58.3</u></b> | 197               | 58.1               | 196                | 58.3               | <b><u>196</u></b>  | <b><u>58.3</u></b> | 197               | 58.1               | 196                | 58.3               |
| 450.soplex    | <b><u>198</u></b>  | <b><u>42.1</u></b> | 198               | 42.2               | 198                | 42.0               | <b><u>198</u></b>  | <b><u>42.1</u></b> | 198               | 42.2               | 198                | 42.0               |
| 453.povray    | 98.2               | 54.2               | 97.7              | 54.5               | <b><u>98.0</u></b> | <b><u>54.3</u></b> | <b><u>87.5</u></b> | <b><u>60.8</u></b> | 87.5              | 60.8               | 87.9               | 60.5               |
| 454.calculix  | 178                | 46.3               | <b><u>178</u></b> | <b><u>46.4</u></b> | 178                | 46.4               | 159                | 52.0               | 159               | 51.8               | <b><u>159</u></b>  | <b><u>51.9</u></b> |
| 459.GemsFDTD  | 46.7               | 227                | 46.0              | 231                | <b><u>46.5</u></b> | <b><u>228</u></b>  | 39.4               | 270                | 39.8              | 267                | <b><u>39.4</u></b> | <b><u>270</u></b>  |
| 465.tonto     | 235                | 41.9               | 232               | 42.4               | <b><u>232</u></b>  | <b><u>42.4</u></b> | 198                | 49.8               | 197               | 49.9               | <b><u>197</u></b>  | <b><u>49.8</u></b> |
| 470.lbm       | 17.2               | 800                | 17.6              | 781                | <b><u>17.4</u></b> | <b><u>790</u></b>  | 17.2               | 800                | 17.6              | 781                | <b><u>17.4</u></b> | <b><u>790</u></b>  |
| 481.wrf       | 99.6               | 112                | 100               | 111                | <b><u>100</u></b>  | <b><u>112</u></b>  | 99.6               | 112                | 100               | 111                | <b><u>100</u></b>  | <b><u>112</u></b>  |
| 482.sphinx3   | <b><u>257</u></b>  | <b><u>75.9</u></b> | 256               | 76.0               | 258                | 75.6               | <b><u>259</u></b>  | <b><u>75.2</u></b> | 255               | 76.3               | 259                | 75.1               |

Results appear in the order in which they were run. Bold underlined text indicates a median measurement.

## Operating System Notes

Stack size set to unlimited using "ulimit -s unlimited"  
Transparent Huge Pages enabled with:  
echo always > /sys/kernel/mm/redhat\_transparent\_hugepage/enabled

## Platform Notes

BIOS Configuration:  
Intel Hyperthreading Options set to Disabled  
HP Power Profile set to Custom  
HP Power Regulator to HP Static High Performance Mode  
Minimum Processor Idle Power Core State set to C6 State  
Minimum Processor Idle Power Package State set to No Package State  
QPI Snoop Configuration set to Home Snoop  
Thermal Configuration set to Maximum Cooling

Continued on next page



# SPEC CFP2006 Result

Copyright 2006-2014 Standard Performance Evaluation Corporation

## Hewlett-Packard Company

**SPECfp2006 = 115**

ProLiant DL380 Gen9  
(2.60 GHz, Intel Xeon E5-2690 v3)

**SPECfp\_base2006 = 110**

**CPU2006 license:** 3  
**Test sponsor:** Hewlett-Packard Company  
**Tested by:** Hewlett-Packard Company

**Test date:** Oct-2014  
**Hardware Availability:** Sep-2014  
**Software Availability:** Jun-2014

### Platform Notes (Continued)

Collaborative Power Control set to Disabled  
Processor Power and Utilization Monitoring set to Disabled  
Memory Double Refresh Rate set to 1x Refresh

Sysinfo program /cpu2006/config/sysinfo.rev6818  
\$Rev: 6818 \$ \$Date:: 2012-07-17 # \$ e86d102572650a6e4d596a3cee98f191  
running on DL380-Gen9 Thu Oct 2 18:38:23 2014

This section contains SUT (System Under Test) info as seen by some common utilities. To remove or add to this section, see:  
<http://www.spec.org/cpu2006/Docs/config.html#sysinfo>

```
From /proc/cpuinfo
model name      : Intel(R) Xeon(R) CPU E5-2690 v3 @ 2.60GHz
 2 "physical id"s (chips)
 24 "processors"
cores, siblings (Caution: counting these is hw and system dependent. The following excerpts from /proc/cpuinfo might not be reliable. Use with caution.)
  cpu cores     : 12
  siblings      : 12
  physical 0:   cores 0 1 2 3 4 5 8 9 10 11 12 13
  physical 1:   cores 0 1 2 3 4 5 8 9 10 11 12 13
cache size     : 30720 KB
```

```
From /proc/meminfo
MemTotal:      263845844 kB
HugePages_Total: 0
Hugepagesize:  2048 kB
```

```
From /etc/*release* /etc/*version*
os-release:
NAME="Red Hat Enterprise Linux Server"
VERSION="7.0 (Maipo)"
ID="rhel"
ID_LIKE="fedora"
VERSION_ID="7.0"
PRETTY_NAME="Red Hat Enterprise Linux Server 7.0 (Maipo)"
ANSI_COLOR="0;31"
CPE_NAME="cpe:/o:redhat:enterprise_linux:7.0:GA:server"
redhat-release: Red Hat Enterprise Linux Server release 7.0 (Maipo)
system-release: Red Hat Enterprise Linux Server release 7.0 (Maipo)
system-release-cpe: cpe:/o:redhat:enterprise_linux:7.0:ga:server
```

```
uname -a:
Linux DL380-Gen9 3.10.0-121.el7.x86_64 #1 SMP Tue Apr 8 10:48:19 EDT 2014
x86_64 x86_64 x86_64 GNU/Linux
```

run-level 3 Oct 2 18:28

SPEC is set to: /cpu2006  
Filesystem      Type    Size    Used Avail Use% Mounted on  
Continued on next page



# SPEC CFP2006 Result

Copyright 2006-2014 Standard Performance Evaluation Corporation

**Hewlett-Packard Company**

**SPECfp2006 = 115**

ProLiant DL380 Gen9  
(2.60 GHz, Intel Xeon E5-2690 v3)

**SPECfp\_base2006 = 110**

**CPU2006 license:** 3

**Test date:** Oct-2014

**Test sponsor:** Hewlett-Packard Company

**Hardware Availability:** Sep-2014

**Tested by:** Hewlett-Packard Company

**Software Availability:** Jun-2014

## Platform Notes (Continued)

/dev/sda4 ext4 362G 100G 245G 29% /

Additional information from dmidecode:

BIOS HP P89 07/11/2014

Memory:

2x HP 752369-081 16 GB 2133 MHz 2 rank

14x HP NOT AVAILABLE 16 GB 2133 MHz 2 rank

8x UNKNOWN NOT AVAILABLE

(End of data from sysinfo program)

Regarding the sysinfo display about the memory installed, the correct amount of memory is 256 GB and the dmidecode description should have two lines reading as:

2x HP 752369-081 16 GB 2133 MHz 2 rank

14x HP NOT AVAILABLE 16 GB 2133 MHz 2 rank

## General Notes

Environment variables set by runspec before the start of the run:

KMP\_AFFINITY = "granularity=fine,compact"

LD\_LIBRARY\_PATH = "/cpu2006/libs/32:/cpu2006/libs/64:/cpu2006/sh"

OMP\_NUM\_THREADS = "24"

Binaries compiled on a system with 1x Core i7-860 CPU + 8GB memory using RedHat EL 6.4

## Base Compiler Invocation

C benchmarks:

icc -m64

C++ benchmarks:

icpc -m64

Fortran benchmarks:

ifort -m64

Benchmarks using both Fortran and C:

icc -m64 ifort -m64

## Base Portability Flags

410.bwaves: -DSPEC\_CPU\_LP64

416.gamess: -DSPEC\_CPU\_LP64

433.milc: -DSPEC\_CPU\_LP64

434.zeusmp: -DSPEC\_CPU\_LP64

435.gromacs: -DSPEC\_CPU\_LP64 -nofor\_main

Continued on next page

Standard Performance Evaluation Corporation

info@spec.org

http://www.spec.org/

Page 4



# SPEC CFP2006 Result

Copyright 2006-2014 Standard Performance Evaluation Corporation

**Hewlett-Packard Company**

**SPECfp2006 = 115**

ProLiant DL380 Gen9  
(2.60 GHz, Intel Xeon E5-2690 v3)

**SPECfp\_base2006 = 110**

**CPU2006 license:** 3

**Test date:** Oct-2014

**Test sponsor:** Hewlett-Packard Company

**Hardware Availability:** Sep-2014

**Tested by:** Hewlett-Packard Company

**Software Availability:** Jun-2014

## Base Portability Flags (Continued)

```

436.cactusADM: -DSPEC_CPU_LP64 -nofor_main
437.leslie3d: -DSPEC_CPU_LP64
444.namd: -DSPEC_CPU_LP64
447.dealII: -DSPEC_CPU_LP64
450.soplex: -DSPEC_CPU_LP64
453.povray: -DSPEC_CPU_LP64
454.calculix: -DSPEC_CPU_LP64 -nofor_main
459.GemsFDTD: -DSPEC_CPU_LP64
465.tonto: -DSPEC_CPU_LP64
470.lbm: -DSPEC_CPU_LP64
481.wrf: -DSPEC_CPU_LP64 -DSPEC_CPU_CASE_FLAG -DSPEC_CPU_LINUX
482.sphinx3: -DSPEC_CPU_LP64

```

## Base Optimization Flags

```

C benchmarks:
-xCORE-AVX2 -ipo -O3 -no-prec-div -parallel -opt-prefetch
-ansi-alias

C++ benchmarks:
-xCORE-AVX2 -ipo -O3 -no-prec-div -opt-prefetch -ansi-alias

Fortran benchmarks:
-xCORE-AVX2 -ipo -O3 -no-prec-div -parallel -opt-prefetch

Benchmarks using both Fortran and C:
-xCORE-AVX2 -ipo -O3 -no-prec-div -parallel -opt-prefetch
-ansi-alias

```

## Peak Compiler Invocation

```

C benchmarks:
icc -m64

C++ benchmarks:
icpc -m64

Fortran benchmarks:
ifort -m64

Benchmarks using both Fortran and C:
icc -m64 ifort -m64

```



# SPEC CFP2006 Result

Copyright 2006-2014 Standard Performance Evaluation Corporation

**Hewlett-Packard Company**

**SPECfp2006 = 115**

ProLiant DL380 Gen9  
(2.60 GHz, Intel Xeon E5-2690 v3)

**SPECfp\_base2006 = 110**

**CPU2006 license:** 3

**Test date:** Oct-2014

**Test sponsor:** Hewlett-Packard Company

**Hardware Availability:** Sep-2014

**Tested by:** Hewlett-Packard Company

**Software Availability:** Jun-2014

## Peak Portability Flags

Same as Base Portability Flags

## Peak Optimization Flags

C benchmarks:

433.milc: -xCORE-AVX2(pass 2) -prof-gen(pass 1) -ipo(pass 2)  
-O3(pass 2) -no-prec-div(pass 2) -prof-use(pass 2)  
-auto-ilp32 -ansi-alias

470.lbm: basepeak = yes

482.sphinx3: -xCORE-AVX2 -ipo -O3 -no-prec-div -unroll2 -ansi-alias  
-parallel

C++ benchmarks:

444.namd: -xCORE-AVX2(pass 2) -prof-gen(pass 1) -ipo(pass 2)  
-O3(pass 2) -no-prec-div(pass 2) -prof-use(pass 2)  
-fno-alias -auto-ilp32

447.dealII: basepeak = yes

450.soplex: basepeak = yes

453.povray: -xCORE-AVX2(pass 2) -prof-gen(pass 1) -ipo(pass 2)  
-O3(pass 2) -no-prec-div(pass 2) -prof-use(pass 2) -unroll4  
-ansi-alias

Fortran benchmarks:

410.bwaves: basepeak = yes

416.gamess: -xCORE-AVX2(pass 2) -prof-gen(pass 1) -ipo(pass 2)  
-O3(pass 2) -no-prec-div(pass 2) -prof-use(pass 2) -unroll2  
-inline-level=0 -scalar-rep-

434.zeusmp: basepeak = yes

437.leslie3d: basepeak = yes

459.GemsFDTD: -xCORE-AVX2(pass 2) -prof-gen(pass 1) -ipo(pass 2)  
-O3(pass 2) -no-prec-div(pass 2) -prof-use(pass 2) -unroll2  
-inline-level=0 -opt-prefetch -parallel

465.tonto: -xCORE-AVX2(pass 2) -prof-gen(pass 1) -ipo(pass 2)  
-O3(pass 2) -no-prec-div(pass 2) -prof-use(pass 2)  
-inline-calloc -opt-malloc-options=3 -auto -unroll4

Continued on next page



# SPEC CFP2006 Result

Copyright 2006-2014 Standard Performance Evaluation Corporation

**Hewlett-Packard Company**

**SPECfp2006 = 115**

ProLiant DL380 Gen9  
(2.60 GHz, Intel Xeon E5-2690 v3)

**SPECfp\_base2006 = 110**

**CPU2006 license:** 3

**Test date:** Oct-2014

**Test sponsor:** Hewlett-Packard Company

**Hardware Availability:** Sep-2014

**Tested by:** Hewlett-Packard Company

**Software Availability:** Jun-2014

## Peak Optimization Flags (Continued)

Benchmarks using both Fortran and C:

435.gromacs: basepeak = yes

436.cactusADM: basepeak = yes

454.calculix: -xCORE-AVX2 -ipo -O3 -no-prec-div -auto-ilp32 -ansi-alias

481.wrf: basepeak = yes

The flags files that were used to format this result can be browsed at

<http://www.spec.org/cpu2006/flags/Intel-ic15.0-official-linux64.html>

<http://www.spec.org/cpu2006/flags/HP-Platform-Flags-Intel-V1.2-HSW-revE.html>

You can also download the XML flags sources by saving the following links:

<http://www.spec.org/cpu2006/flags/Intel-ic15.0-official-linux64.xml>

<http://www.spec.org/cpu2006/flags/HP-Platform-Flags-Intel-V1.2-HSW-revE.xml>

SPEC and SPECfp are registered trademarks of the Standard Performance Evaluation Corporation. All other brand and product names appearing in this result are trademarks or registered trademarks of their respective holders.

For questions about this result, please contact the tester.  
For other inquiries, please contact [webmaster@spec.org](mailto:webmaster@spec.org).

Tested with SPEC CPU2006 v1.2.  
Report generated on Tue Oct 21 15:48:53 2014 by SPEC CPU2006 PS/PDF formatter v6932.  
Originally published on 21 October 2014.