



SPEC® CINT2006 Result

Copyright 2006-2014 Standard Performance Evaluation Corporation

Hewlett-Packard Company

SPECint®2006 = **66.2**

ProLiant DL380 Gen9
(2.30 GHz, Intel Xeon E5-2699 v3)

SPECint_base2006 = **63.2**

CPU2006 license: 3

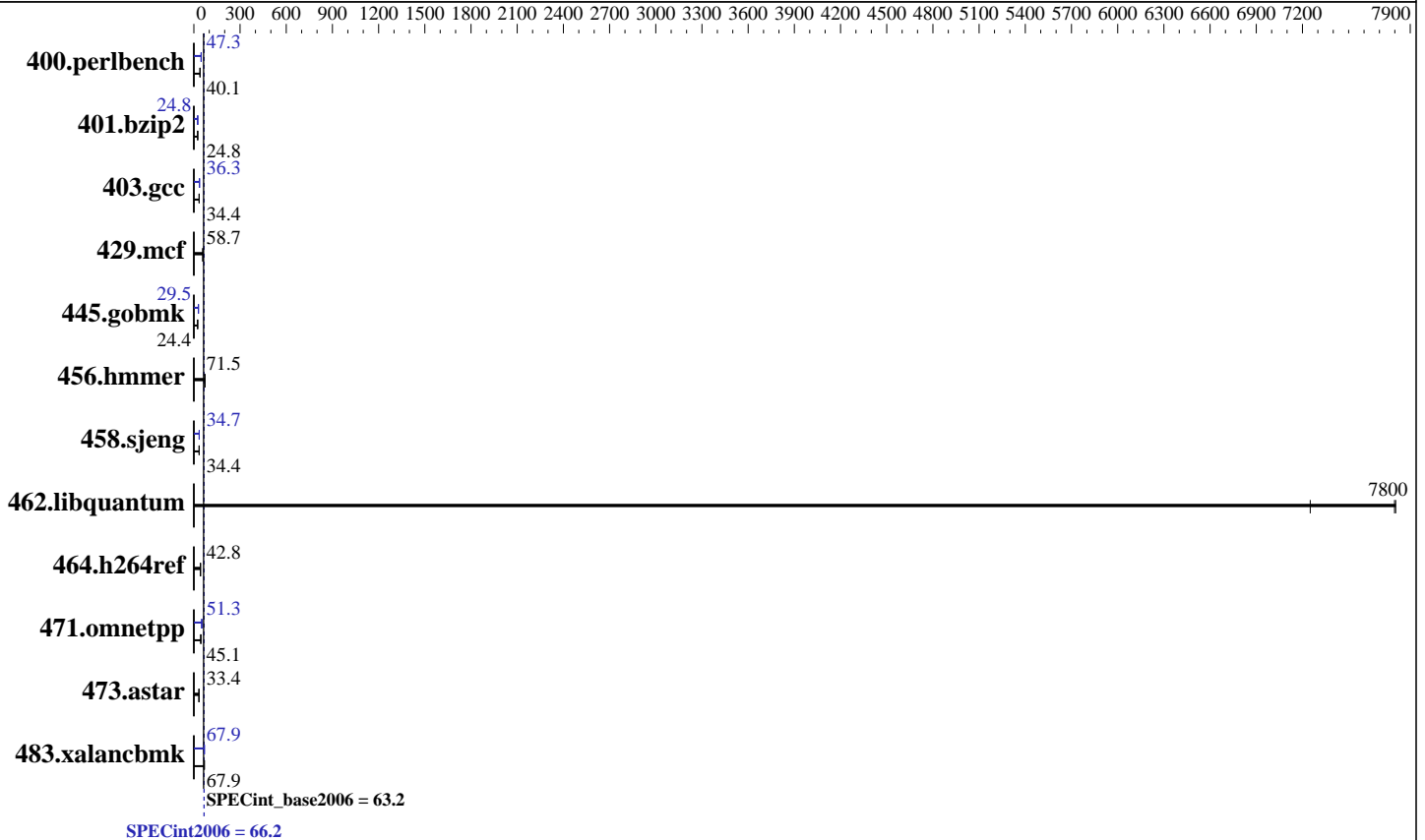
Test date: Aug-2014

Test sponsor: Hewlett-Packard Company

Hardware Availability: Sep-2014

Tested by: Hewlett-Packard Company

Software Availability: Jun-2014



Hardware

CPU Name: Intel Xeon E5-2699 v3
 CPU Characteristics: Intel Turbo Boost Technology up to 3.60 GHz
 CPU MHz: 2300
 FPU: Integrated
 CPU(s) enabled: 36 cores, 2 chips, 18 cores/chip
 CPU(s) orderable: 1,2 chips
 Primary Cache: 32 KB I + 32 KB D on chip per core
 Secondary Cache: 256 KB I+D on chip per core
 L3 Cache: 45 MB I+D on chip per chip
 Other Cache: None
 Memory: 256 GB (16 x 16 GB 2Rx4 PC4-2133P-R)
 Disk Subsystem: 1 x 400 GB SAS SSD, RAID 0
 Other Hardware: None

Software

Operating System: Red Hat Enterprise Linux Server release 7.0 (Maipo)
 Kernel 3.10.0-123.el7.x86_64
 Compiler: C/C++: Version 14.0.0.080 of Intel C++ Studio XE for Linux
 Auto Parallel: Yes
 File System: ext4
 System State: Run level 3 (multi-user)
 Base Pointers: 32/64-bit
 Peak Pointers: 32/64-bit
 Other Software: Microquill SmartHeap V10.0



SPEC CINT2006 Result

Copyright 2006-2014 Standard Performance Evaluation Corporation

Hewlett-Packard Company

ProLiant DL380 Gen9
(2.30 GHz, Intel Xeon E5-2699 v3)

SPECint2006 = **66.2**

SPECint_base2006 = **63.2**

CPU2006 license: 3
Test sponsor: Hewlett-Packard Company
Tested by: Hewlett-Packard Company

Test date: Aug-2014
Hardware Availability: Sep-2014
Software Availability: Jun-2014

Results Table

Benchmark	Base						Peak					
	Seconds	Ratio	Seconds	Ratio	Seconds	Ratio	Seconds	Ratio	Seconds	Ratio	Seconds	Ratio
400.perlbench	243	40.2	244	40.1	244	40.0	206	47.3	206	47.4	207	47.3
401.bzip2	390	24.8	390	24.8	389	24.8	388	24.9	389	24.8	389	24.8
403.gcc	234	34.4	235	34.3	234	34.5	222	36.2	222	36.3	221	36.4
429.mcf	157	58.0	155	58.7	154	59.1	157	58.0	155	58.7	154	59.1
445.gobmk	430	24.4	431	24.3	430	24.4	355	29.5	356	29.5	355	29.5
456.hmmr	131	71.0	130	71.8	130	71.5	131	71.0	130	71.8	130	71.5
458.sjeng	352	34.4	352	34.4	352	34.4	349	34.7	348	34.8	349	34.7
462.libquantum	2.86	7250	2.66	7800	2.65	7810	2.86	7250	2.66	7800	2.65	7810
464.h264ref	516	42.9	518	42.7	517	42.8	516	42.9	518	42.7	517	42.8
471.omnetpp	139	45.1	138	45.4	139	44.8	121	51.5	122	51.2	122	51.3
473.astar	209	33.6	213	33.0	210	33.4	209	33.6	213	33.0	210	33.4
483.xalancbmk	102	68.0	102	67.7	102	67.9	100	68.8	102	67.9	102	67.4

Results appear in the order in which they were run. Bold underlined text indicates a median measurement.

Submit Notes

The config file option 'submit' was used.

Operating System Notes

Stack size set to unlimited using "ulimit -s unlimited"
Transparent Huge Pages enabled with:
echo always > /sys/kernel/mm/redhat_transparent_hugepage/enabled
Filesystem page cache cleared with:
echo 1 > /proc/sys/vm/drop_caches

Platform Notes

BIOS Configuration:
Intel Hyperthreading Options set to Disabled
HP Power Profile set to Custom
HP Power Regulator set to HP Static High Performance Mode
Minimum Processor Idle Power Package C-State set to No Package State
Energy/Performance Bias set to Maximum Performance
QPI Snoop Configuration set to Early Snoop
Thermal Configuration set to Maximum Cooling
Processor Power and Utilization Monitoring set to Disabled
Memory Refresh Rate set to 1x Refresh

Sysinfo program /cpu2006/config/sysinfo.rev6818
\$Rev: 6818 \$ \$Date:: 2012-07-17 #\$ e86d102572650a6e4d596a3cee98f191
running on localhost.localdomain Mon Aug 11 08:44:10 2014

Continued on next page



SPEC CINT2006 Result

Copyright 2006-2014 Standard Performance Evaluation Corporation

Hewlett-Packard Company

SPECint2006 = 66.2

ProLiant DL380 Gen9
(2.30 GHz, Intel Xeon E5-2699 v3)

SPECint_base2006 = 63.2

CPU2006 license: 3

Test date: Aug-2014

Test sponsor: Hewlett-Packard Company

Hardware Availability: Sep-2014

Tested by: Hewlett-Packard Company

Software Availability: Jun-2014

Platform Notes (Continued)

This section contains SUT (System Under Test) info as seen by some common utilities. To remove or add to this section, see: <http://www.spec.org/cpu2006/Docs/config.html#sysinfo>

```

From /proc/cpuinfo
model name      : Intel(R) Xeon(R) CPU E5-2699 v3 @ 2.30GHz
 2 "physical id"s (chips)
 36 "processors"
cores, siblings (Caution: counting these is hw and system dependent. The
following excerpts from /proc/cpuinfo might not be reliable. Use with
caution.)
  cpu cores    : 18
  siblings     : 18
  physical 0:  cores 0 2 3 4 8 9 10 11 16 17 18 19 20 24 25 26 27
  physical 1:  cores 0 2 3 4 8 9 10 11 16 17 18 19 20 24 25 26 27
cache size     : 46080 KB

```

```

From /proc/meminfo
MemTotal:      263844520 kB
HugePages_Total: 0
Hugepagesize:  2048 kB

```

```

From /etc/*release* /etc/*version*
os-release:
NAME="Red Hat Enterprise Linux Server"
VERSION="7.0 (Maipo)"
ID="rhel"
ID_LIKE="fedora"
VERSION_ID="7.0"
PRETTY_NAME="Red Hat Enterprise Linux Server 7.0 (Maipo)"
ANSI_COLOR="0;31"
CPE_NAME="cpe:/o:redhat:enterprise_linux:7.0:GA:server"
redhat-release: Red Hat Enterprise Linux Server release 7.0 (Maipo)
system-release: Red Hat Enterprise Linux Server release 7.0 (Maipo)
system-release-cpe: cpe:/o:redhat:enterprise_linux:7.0:ga:server

```

```

uname -a:
Linux localhost.localdomain 3.10.0-123.el7.x86_64 #1 SMP Mon May 5 11:16:57
EDT 2014 x86_64 x86_64 x86_64 GNU/Linux

```

run-level 3 Aug 11 08:42

```

SPEC is set to: /cpu2006
Filesystem      Type  Size  Used Avail Use% Mounted on
/dev/sda3       ext4  362G  9.2G  335G   3% /

```

```

Additional information from dmidecode:
BIOS HP P89 07/11/2014
Memory:
16x HP NOT AVAILABLE 16 GB 2133 MHz 2 rank
8x UNKNOWN NOT AVAILABLE

```

Continued on next page



SPEC CINT2006 Result

Copyright 2006-2014 Standard Performance Evaluation Corporation

Hewlett-Packard Company

SPECint2006 = 66.2

ProLiant DL380 Gen9
(2.30 GHz, Intel Xeon E5-2699 v3)

SPECint_base2006 = 63.2

CPU2006 license: 3
Test sponsor: Hewlett-Packard Company
Tested by: Hewlett-Packard Company

Test date: Aug-2014
Hardware Availability: Sep-2014
Software Availability: Jun-2014

Platform Notes (Continued)

(End of data from sysinfo program)
Regarding the sysinfo display about the memory installed, the correct amount of memory is 256 GB and the dmidecode description should have one line reading as:
16x HP NOT AVAILABLE 16 GB 2133 MHz 2 rank

General Notes

Environment variables set by runspec before the start of the run:
KMP_AFFINITY = "granularity=fine,scatter"
LD_LIBRARY_PATH = "/cpu2006/libs/32:/cpu2006/libs/64:/cpu2006/sh"
OMP_NUM_THREADS = "36"

Binaries compiled on a system with 1x Core i7-860 CPU + 8GB memory using RedHat EL 6.4

Base Compiler Invocation

C benchmarks:
icc -m64

C++ benchmarks:
icpc -m64

Base Portability Flags

400.perlbench: -DSPEC_CPU_LP64 -DSPEC_CPU_LINUX_X64
401.bzip2: -DSPEC_CPU_LP64
403.gcc: -DSPEC_CPU_LP64
429.mcf: -DSPEC_CPU_LP64
445.gobmk: -DSPEC_CPU_LP64
456.hmmer: -DSPEC_CPU_LP64
458.sjeng: -DSPEC_CPU_LP64
462.libquantum: -DSPEC_CPU_LP64 -DSPEC_CPU_LINUX
464.h264ref: -DSPEC_CPU_LP64
471.omnetpp: -DSPEC_CPU_LP64
473.astar: -DSPEC_CPU_LP64
483.xalancbmk: -DSPEC_CPU_LP64 -DSPEC_CPU_LINUX

Base Optimization Flags

C benchmarks:
-xCORE-AVX2 -ipo -O3 -no-prec-div -parallel -opt-prefetch -auto-p32

C++ benchmarks:
-xCORE-AVX2 -ipo -O3 -no-prec-div -opt-prefetch -auto-p32
-Wl,-z,muldefs -L/sh -lsmarthcap64



SPEC CINT2006 Result

Copyright 2006-2014 Standard Performance Evaluation Corporation

Hewlett-Packard Company

SPECint2006 = 66.2

ProLiant DL380 Gen9
(2.30 GHz, Intel Xeon E5-2699 v3)

SPECint_base2006 = 63.2

CPU2006 license: 3

Test date: Aug-2014

Test sponsor: Hewlett-Packard Company

Hardware Availability: Sep-2014

Tested by: Hewlett-Packard Company

Software Availability: Jun-2014

Base Other Flags

C benchmarks:

403.gcc: -Dalloca=_alloca

Peak Compiler Invocation

C benchmarks (except as noted below):

icc -m64

400.perlbench: icc -m32

445.gobmk: icc -m32

C++ benchmarks (except as noted below):

icpc -m32

473.astar: icpc -m64

Peak Portability Flags

400.perlbench: -DSPEC_CPU_LINUX_IA32
401.bzip2: -DSPEC_CPU_LP64
403.gcc: -DSPEC_CPU_LP64
429.mcf: -DSPEC_CPU_LP64
456.hmmer: -DSPEC_CPU_LP64
458.sjeng: -DSPEC_CPU_LP64
462.libquantum: -DSPEC_CPU_LP64 -DSPEC_CPU_LINUX
464.h264ref: -DSPEC_CPU_LP64
473.astar: -DSPEC_CPU_LP64
483.xalancbmk: -DSPEC_CPU_LINUX

Peak Optimization Flags

C benchmarks:

400.perlbench: -xCORE-AVX2(pass 2) -prof-gen(pass 1) -ipo(pass 2)
-O3(pass 2) -no-prec-div(pass 2) -prof-use(pass 2)
-opt-prefetch -ansi-alias

401.bzip2: -xCORE-AVX2(pass 2) -prof-gen(pass 1) -ipo(pass 2)
-O3(pass 2) -no-prec-div -prof-use(pass 2) -auto-ilp32
-opt-prefetch -ansi-alias

Continued on next page



SPEC CINT2006 Result

Copyright 2006-2014 Standard Performance Evaluation Corporation

Hewlett-Packard Company

SPECint2006 = 66.2

ProLiant DL380 Gen9
(2.30 GHz, Intel Xeon E5-2699 v3)

SPECint_base2006 = 63.2

CPU2006 license: 3

Test date: Aug-2014

Test sponsor: Hewlett-Packard Company

Hardware Availability: Sep-2014

Tested by: Hewlett-Packard Company

Software Availability: Jun-2014

Peak Optimization Flags (Continued)

403.gcc: -xCORE-AVX2 -ipo -O3 -no-prec-div -inline-calloc
-opt-malloc-options=3 -auto-ilp32

429.mcf: basepeak = yes

445.gobmk: -xCORE-AVX2(pass 2) -prof-gen(pass 1) -prof-use(pass 2)
-ansi-alias

456.hmmer: basepeak = yes

458.sjeng: -xCORE-AVX2(pass 2) -prof-gen(pass 1) -ipo(pass 2)
-O3(pass 2) -no-prec-div(pass 2) -prof-use(pass 2)
-unroll4

462.libquantum: basepeak = yes

464.h264ref: basepeak = yes

C++ benchmarks:

471.omnetpp: -xCORE-AVX2(pass 2) -prof-gen(pass 1) -ipo(pass 2)
-O3(pass 2) -no-prec-div(pass 2) -prof-use(pass 2)
-opt-ra-region-strategy=block -ansi-alias
-Wl,-z,muldefs -L/sh -lsmarheap

473.astar: basepeak = yes

483.xalancbmk: -xCORE-AVX2 -ipo -O3 -no-prec-div -opt-prefetch
-ansi-alias -Wl,-z,muldefs -L/sh -lsmarheap

Peak Other Flags

C benchmarks:

403.gcc: -Dalloca=_alloca

The flags files that were used to format this result can be browsed at

<http://www.spec.org/cpu2006/flags/Intel-ic14.0-official-linux64.20140128.html>
<http://www.spec.org/cpu2006/flags/HP-Platform-Flags-Intel-V1.2-HSW-revA.html>

You can also download the XML flags sources by saving the following links:

<http://www.spec.org/cpu2006/flags/Intel-ic14.0-official-linux64.20140128.xml>
<http://www.spec.org/cpu2006/flags/HP-Platform-Flags-Intel-V1.2-HSW-revA.xml>



SPEC CINT2006 Result

Copyright 2006-2014 Standard Performance Evaluation Corporation

Hewlett-Packard Company

ProLiant DL380 Gen9
(2.30 GHz, Intel Xeon E5-2699 v3)

SPECint2006 = 66.2

SPECint_base2006 = 63.2

CPU2006 license: 3
Test sponsor: Hewlett-Packard Company
Tested by: Hewlett-Packard Company

Test date: Aug-2014
Hardware Availability: Sep-2014
Software Availability: Jun-2014

SPEC and SPECint are registered trademarks of the Standard Performance Evaluation Corporation. All other brand and product names appearing in this result are trademarks or registered trademarks of their respective holders.

For questions about this result, please contact the tester.
For other inquiries, please contact webmaster@spec.org.

Tested with SPEC CPU2006 v1.2.
Report generated on Wed Sep 24 16:18:58 2014 by SPEC CPU2006 PS/PDF formatter v6932.
Originally published on 24 September 2014.