



SPEC® CFP2006 Result

Copyright 2006-2014 Standard Performance Evaluation Corporation

Huawei

SPECfp®2006 = 76.5

Huawei RH2288H V2 (Intel Xeon E5-2640)

SPECfp_base2006 = 74.2

CPU2006 license: 3175

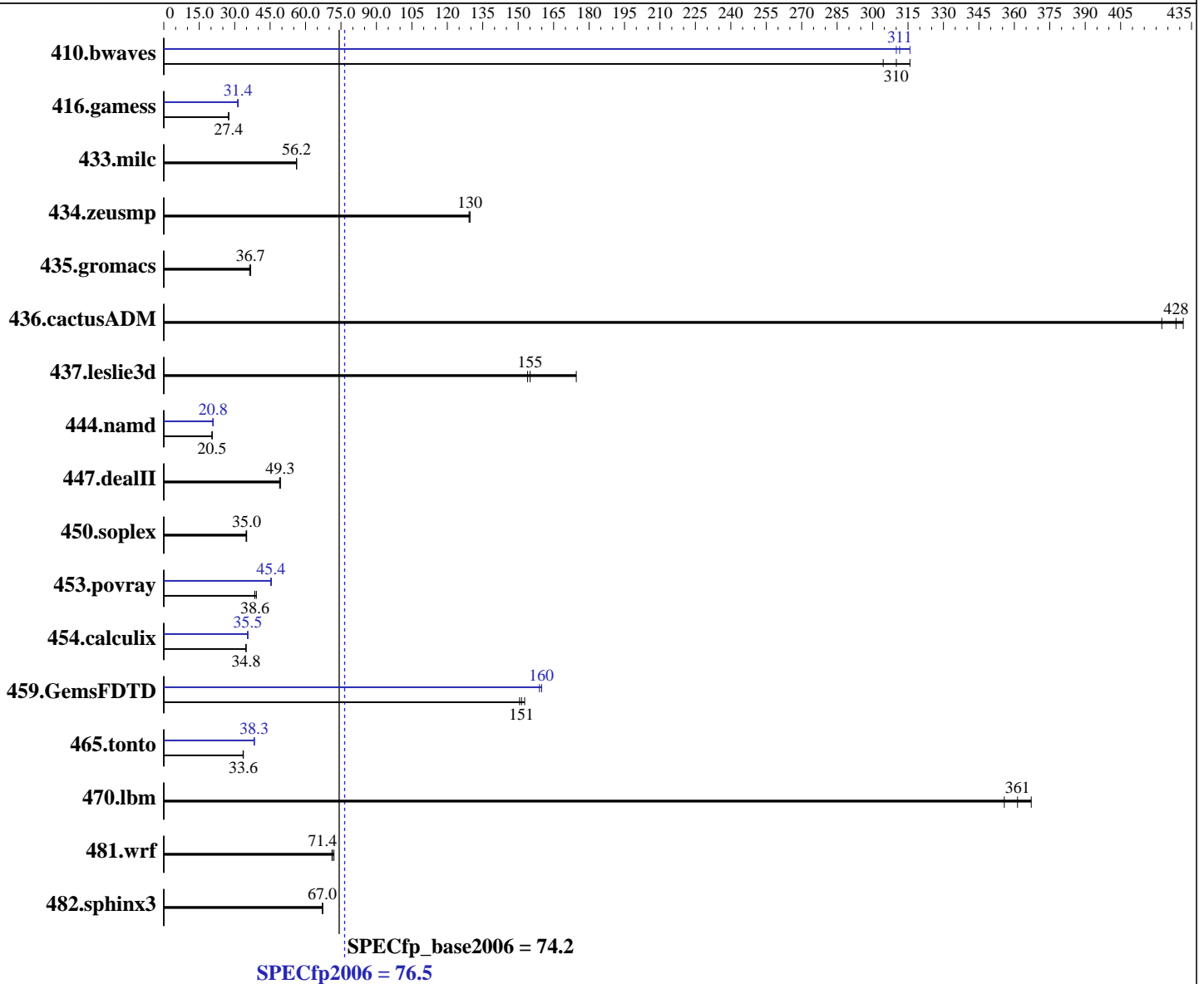
Test sponsor: Huawei

Tested by: Huawei

Test date: Aug-2014

Hardware Availability: Mar-2012

Software Availability: Nov-2013



Hardware

CPU Name: Intel Xeon E5-2640
 CPU Characteristics: Intel Turbo Boost Technology up to 3.00 GHz
 CPU MHz: 2500
 FPU: Integrated
 CPU(s) enabled: 12 cores, 2 chips, 6 cores/chip
 CPU(s) orderable: 1,2 chip
 Primary Cache: 32 KB I + 32 KB D on chip per core
 Secondary Cache: 256 KB I+D on chip per core

Continued on next page

Software

Operating System: Red Hat Enterprise Linux Server release 6.5 (Santiago)
 2.6.32-431.el6.x86_64
 Compiler: C/C++: Version 12.1.0.225 of Intel C++ Studio XE for Linux;
 Fortran: Version 12.1.0.225 of Intel Fortran Studio XE for Linux
 Auto Parallel: Yes
 File System: ext4

Continued on next page



SPEC CFP2006 Result

Copyright 2006-2014 Standard Performance Evaluation Corporation

Huawei

SPECfp2006 = **76.5**

Huawei RH2288H V2 (Intel Xeon E5-2640)

SPECfp_base2006 = **74.2**

CPU2006 license: 3175

Test sponsor: Huawei

Tested by: Huawei

Test date: Aug-2014

Hardware Availability: Mar-2012

Software Availability: Nov-2013

L3 Cache: 15 MB I+D on chip per chip
 Other Cache: None
 Memory: 256 GB (16 x 16 GB 2Rx4 PC3-12800R-11, ECC)
 Disk Subsystem: 1 x 600 GB SAS, 10000 RPM
 Other Hardware: None

System State: Run level 3 (multi-user)
 Base Pointers: 64-bit
 Peak Pointers: 32/64-bit
 Other Software: None

Results Table

Benchmark	Base						Peak					
	Seconds	Ratio	Seconds	Ratio	Seconds	Ratio	Seconds	Ratio	Seconds	Ratio	Seconds	Ratio
410.bwaves	44.6	304	43.0	316	43.8	310	43.6	311	43.8	310	43.0	316
416.gamess	714	27.4	712	27.5	714	27.4	624	31.4	622	31.5	627	31.2
433.milc	163	56.2	163	56.2	163	56.2	163	56.2	163	56.2	163	56.2
434.zeusmp	70.2	130	70.4	129	70.2	130	70.2	130	70.4	129	70.2	130
435.gromacs	197	36.3	194	36.7	195	36.7	197	36.3	194	36.7	195	36.7
436.cactusADM	28.3	422	27.9	428	27.7	432	28.3	422	27.9	428	27.7	432
437.leslie3d	60.6	155	61.0	154	53.8	175	60.6	155	61.0	154	53.8	175
444.namd	392	20.5	392	20.4	392	20.5	385	20.8	385	20.8	385	20.8
447.dealII	232	49.3	232	49.3	233	49.0	232	49.3	232	49.3	233	49.0
450.soplex	240	34.8	238	35.1	238	35.0	240	34.8	238	35.1	238	35.0
453.povray	138	38.5	138	38.6	136	39.2	117	45.4	117	45.6	117	45.3
454.calculix	237	34.8	237	34.8	237	34.8	232	35.5	233	35.4	232	35.6
459.GemsFDTD	70.1	151	70.5	151	69.5	153	66.4	160	66.8	159	66.4	160
465.tonto	292	33.7	293	33.5	293	33.6	258	38.2	256	38.4	257	38.3
470.lbm	38.0	361	37.4	367	38.6	356	38.0	361	37.4	367	38.6	356
481.wrf	155	72.0	157	71.2	156	71.4	155	72.0	157	71.2	156	71.4
482.sphinx3	290	67.3	291	67.0	291	67.0	290	67.3	291	67.0	291	67.0

Results appear in the order in which they were run. Bold underlined text indicates a median measurement.

Operating System Notes

Stack size set to unlimited using "ulimit -s unlimited"

Platform Notes

BIOS configuration:
 Set Power Efficiency Mode to Custom
 Set Hyper-Threading to Disabled
 Baseboard Management Controller used to adjust the fan speed to 100%
 Sysinfo program /spec/config/sysinfo.rev6800
 \$Rev: 6800 \$ \$Date:: 2011-10-11 #\$ 6f2ebdff5032aaa42e583f96b07f99d3
 running on SPECCPU Fri Aug 15 05:41:04 2014

This section contains SUT (System Under Test) info as seen by some common utilities. To remove or add to this section, see:

Continued on next page



SPEC CFP2006 Result

Copyright 2006-2014 Standard Performance Evaluation Corporation

Huawei

SPECfp2006 = 76.5

Huawei RH2288H V2 (Intel Xeon E5-2640)

SPECfp_base2006 = 74.2

CPU2006 license: 3175

Test sponsor: Huawei

Tested by: Huawei

Test date: Aug-2014

Hardware Availability: Mar-2012

Software Availability: Nov-2013

Platform Notes (Continued)

<http://www.spec.org/cpu2006/Docs/config.html#sysinfo>

```

From /proc/cpuinfo
  model name : Intel(R) Xeon(R) CPU E5-2640 0 @ 2.50GHz
    2 "physical id"s (chips)
    12 "processors"
  cores, siblings (Caution: counting these is hw and system dependent. The
  following excerpts from /proc/cpuinfo might not be reliable. Use with
  caution.)
    cpu cores : 6
    siblings  : 6
    physical 0: cores 0 1 2 3 4 5
    physical 1: cores 0 1 2 3 4 5
  cache size : 15360 KB

```

```

From /proc/meminfo
MemTotal:      264478184 kB
HugePages_Total:      0
Hugepagesize:    2048 kB

```

```

/usr/bin/lsb_release -d
  Red Hat Enterprise Linux Server release 6.5 (Santiago)

```

```

From /etc/*release* /etc/*version*
redhat-release: Red Hat Enterprise Linux Server release 6.5 (Santiago)
system-release: Red Hat Enterprise Linux Server release 6.5 (Santiago)
system-release-cpe: cpe:/o:redhat:enterprise_linux:6server:ga:server

```

```

uname -a:
  Linux SPEC CPU 2.6.32-431.el6.x86_64 #1 SMP Sun Nov 10 22:19:54 EST 2013
  x86_64 x86_64 x86_64 GNU/Linux

```

run-level 3 Aug 14 22:29

```

SPEC is set to: /spec
Filesystem      Type  Size  Used Avail Use% Mounted on
/dev/sda2       ext4  543G   96G  420G  19% /

```

Additional information from dmidecode:

```

Memory:
  16x Hynix HMT42GR7MFR4C-PB 16 GB 1600 MHz 2 rank

```

(End of data from sysinfo program)

General Notes

Environment variables set by runspec before the start of the run:

```

KMP_AFFINITY = "granularity=fine,compact,0,1"
LD_LIBRARY_PATH = "/spec/libs/32:/spec/libs/64"
OMP_NUM_THREADS = "12"

```

Continued on next page



SPEC CFP2006 Result

Copyright 2006-2014 Standard Performance Evaluation Corporation

Huawei

SPECfp2006 = 76.5

Huawei RH2288H V2 (Intel Xeon E5-2640)

SPECfp_base2006 = 74.2

CPU2006 license: 3175

Test date: Aug-2014

Test sponsor: Huawei

Hardware Availability: Mar-2012

Tested by: Huawei

Software Availability: Nov-2013

General Notes (Continued)

Binaries compiled on a system with 2 x Xeon X5645 CPU + 16GB memory using RHEL 6.1
Transparent Huge Pages enabled with:
echo always > /sys/kernel/mm/redhat_transparent_hugepage/enabled

Base Compiler Invocation

C benchmarks:

icc -m64

C++ benchmarks:

icpc -m64

Fortran benchmarks:

ifort -m64

Benchmarks using both Fortran and C:

icc -m64 ifort -m64

Base Portability Flags

410.bwaves: -DSPEC_CPU_LP64
416.gamess: -DSPEC_CPU_LP64
433.milc: -DSPEC_CPU_LP64
434.zeusmp: -DSPEC_CPU_LP64
435.gromacs: -DSPEC_CPU_LP64 -nofor_main
436.cactusADM: -DSPEC_CPU_LP64 -nofor_main
437.leslie3d: -DSPEC_CPU_LP64
444.namd: -DSPEC_CPU_LP64
447.dealII: -DSPEC_CPU_LP64
450.soplex: -DSPEC_CPU_LP64
453.povray: -DSPEC_CPU_LP64
454.calculix: -DSPEC_CPU_LP64 -nofor_main
459.GemsFDTD: -DSPEC_CPU_LP64
465.tonto: -DSPEC_CPU_LP64
470.lbm: -DSPEC_CPU_LP64
481.wrf: -DSPEC_CPU_LP64 -DSPEC_CPU_CASE_FLAG -DSPEC_CPU_LINUX
482.sphinx3: -DSPEC_CPU_LP64

Base Optimization Flags

C benchmarks:

-xAVX -ipo -O3 -no-prec-div -static -parallel -opt-prefetch
-ansi-alias

Continued on next page



SPEC CFP2006 Result

Copyright 2006-2014 Standard Performance Evaluation Corporation

Huawei

SPECfp2006 = 76.5

Huawei RH2288H V2 (Intel Xeon E5-2640)

SPECfp_base2006 = 74.2

CPU2006 license: 3175

Test date: Aug-2014

Test sponsor: Huawei

Hardware Availability: Mar-2012

Tested by: Huawei

Software Availability: Nov-2013

Base Optimization Flags (Continued)

C++ benchmarks:

-xAVX -ipo -O3 -no-prec-div -static -opt-prefetch -ansi-alias

Fortran benchmarks:

-xAVX -ipo -O3 -no-prec-div -static -parallel -opt-prefetch

Benchmarks using both Fortran and C:

-xAVX -ipo -O3 -no-prec-div -static -parallel -opt-prefetch
-ansi-alias

Peak Compiler Invocation

C benchmarks:

icc -m64

C++ benchmarks:

icpc -m64

Fortran benchmarks:

ifort -m64

Benchmarks using both Fortran and C:

icc -m64 ifort -m64

Peak Portability Flags

Same as Base Portability Flags

Peak Optimization Flags

C benchmarks:

433.milc: basepeak = yes

470.lbm: basepeak = yes

482.sphinx3: basepeak = yes

C++ benchmarks:

444.namd: -xAVX(pass 2) -prof-gen(pass 1) -ipo(pass 2) -O3(pass 2)
-no-prec-div(pass 2) -prof-use(pass 2) -fno-alias
-auto-ilp32

Continued on next page



SPEC CFP2006 Result

Copyright 2006-2014 Standard Performance Evaluation Corporation

Huawei

SPECfp2006 = 76.5

Huawei RH2288H V2 (Intel Xeon E5-2640)

SPECfp_base2006 = 74.2

CPU2006 license: 3175

Test sponsor: Huawei

Tested by: Huawei

Test date: Aug-2014

Hardware Availability: Mar-2012

Software Availability: Nov-2013

Peak Optimization Flags (Continued)

447.dealIII: basepeak = yes

450.soplex: basepeak = yes

453.povray: -xAVX(pass 2) -prof-gen(pass 1) -ipo(pass 2) -O3(pass 2)
-no-prec-div(pass 2) -prof-use(pass 2) -unroll4 -ansi-alias

Fortran benchmarks:

410.bwaves: -xAVX -ipo -O3 -no-prec-div -opt-prefetch -parallel
-static

416.gamess: -xAVX(pass 2) -prof-gen(pass 1) -ipo(pass 2) -O3(pass 2)
-no-prec-div(pass 2) -prof-use(pass 2) -unroll2
-inline-level=0 -scalar-rep- -static

434.zeusmp: basepeak = yes

437.leslie3d: basepeak = yes

459.GemsFDTD: -xAVX(pass 2) -prof-gen(pass 1) -ipo(pass 2) -O3(pass 2)
-no-prec-div(pass 2) -prof-use(pass 2) -unroll2
-inline-level=0 -opt-prefetch -parallel

465.tonto: -xAVX(pass 2) -prof-gen(pass 1) -ipo(pass 2) -O3(pass 2)
-no-prec-div(pass 2) -prof-use(pass 2) -inline-calloc
-opt-malloc-options=3 -auto -unroll4

Benchmarks using both Fortran and C:

435.gromacs: basepeak = yes

436.cactusADM: basepeak = yes

454.calculix: -xAVX -ipo -O3 -no-prec-div -auto-ilp32 -ansi-alias

481.wrf: basepeak = yes

The flags files that were used to format this result can be browsed at

<http://www.spec.org/cpu2006/flags/Intel-ic12.1-official-linux64.20120425.html>

<http://www.spec.org/cpu2006/flags/Huawei-Platform-Settings-V1.0-IVB-RevG.html>

You can also download the XML flags sources by saving the following links:

<http://www.spec.org/cpu2006/flags/Intel-ic12.1-official-linux64.20120425.xml>

<http://www.spec.org/cpu2006/flags/Huawei-Platform-Settings-V1.0-IVB-RevG.xml>



SPEC CFP2006 Result

Copyright 2006-2014 Standard Performance Evaluation Corporation

Huawei

SPECfp2006 = 76.5

Huawei RH2288H V2 (Intel Xeon E5-2640)

SPECfp_base2006 = 74.2

CPU2006 license: 3175

Test sponsor: Huawei

Tested by: Huawei

Test date: Aug-2014

Hardware Availability: Mar-2012

Software Availability: Nov-2013

SPEC and SPECfp are registered trademarks of the Standard Performance Evaluation Corporation. All other brand and product names appearing in this result are trademarks or registered trademarks of their respective holders.

For questions about this result, please contact the tester.
For other inquiries, please contact webmaster@spec.org.

Tested with SPEC CPU2006 v1.2.
Report generated on Wed Sep 10 16:30:01 2014 by SPEC CPU2006 PS/PDF formatter v6932.
Originally published on 10 September 2014.