



SPEC® CFP2006 Result

Copyright 2006-2014 Standard Performance Evaluation Corporation

Hewlett-Packard Company

SPECfp®2006 = 88.9

ProLiant DL360e Gen8
(2.40 GHz, Intel Xeon E5-2470 v2)

SPECfp_base2006 = 85.1

CPU2006 license: 3

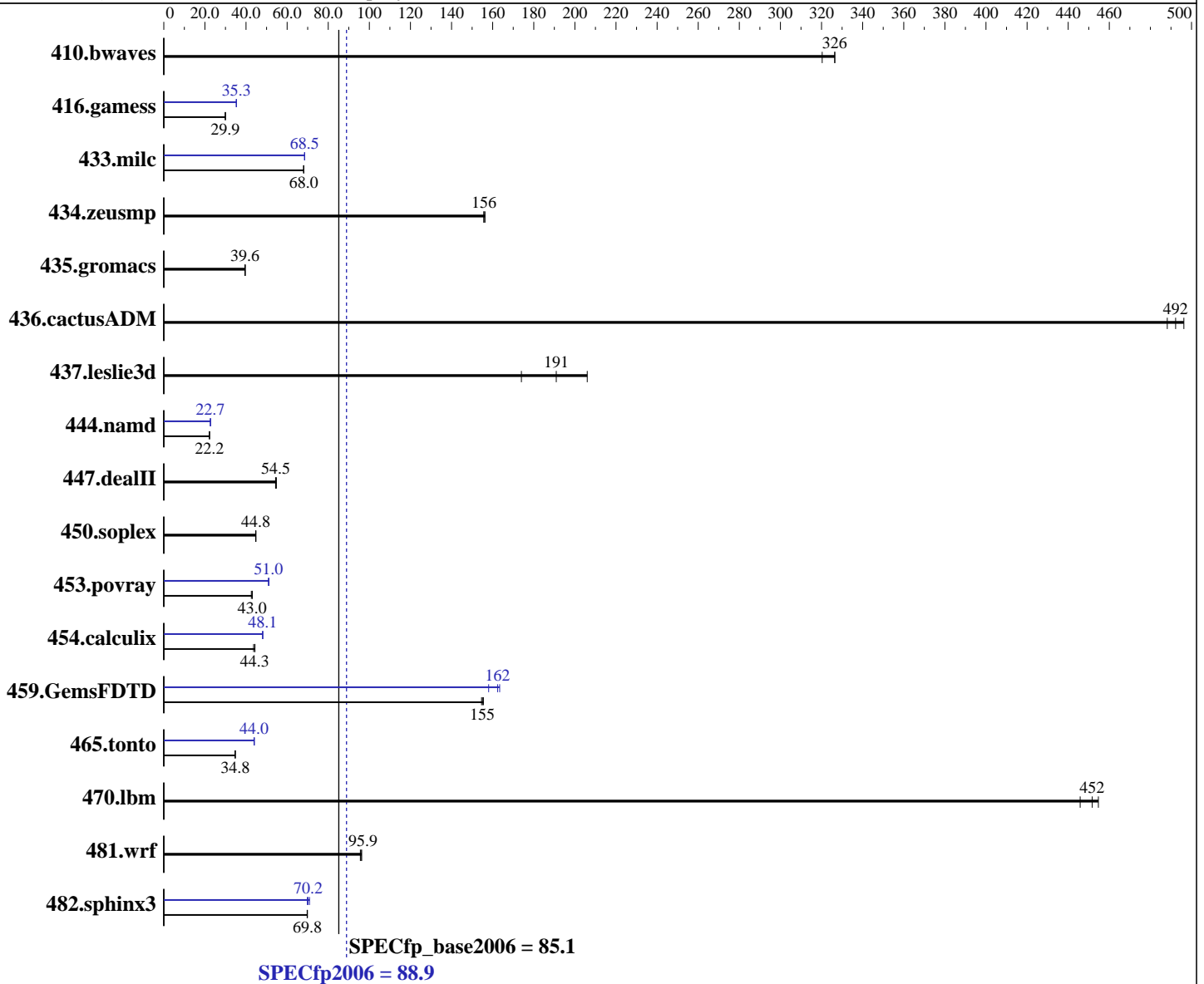
Test date: Jan-2014

Test sponsor: Hewlett-Packard Company

Hardware Availability: Jan-2014

Tested by: Hewlett-Packard Company

Software Availability: Nov-2013



Hardware

CPU Name: Intel Xeon E5-2470 v2
 CPU Characteristics: Intel Turbo Boost Technology up to 3.20 GHz
 CPU MHz: 2400
 FPU: Integrated
 CPU(s) enabled: 20 cores, 2 chips, 10 cores/chip
 CPU(s) orderable: 1,2 chips
 Primary Cache: 32 KB I + 32 KB D on chip per core
 Secondary Cache: 256 KB I+D on chip per core

Continued on next page

Software

Operating System: SUSE Linux Enterprise Server 11 (x86_64) SP3
 Kernel 3.0.76-0.11-default
 Compiler: C/C++: Version 14.0.0.080 of Intel C++ Studio XE for Linux;
 Fortran: Version 14.0.0.080 of Intel Fortran Studio XE for Linux
 Auto Parallel: Yes
 File System: ext3
 System State: Run level 3 (multi-user)

Continued on next page



SPEC CFP2006 Result

Copyright 2006-2014 Standard Performance Evaluation Corporation

Hewlett-Packard Company

SPECfp2006 = **88.9**

ProLiant DL360e Gen8
(2.40 GHz, Intel Xeon E5-2470 v2)

SPECfp_base2006 = **85.1**

CPU2006 license: 3

Test date: Jan-2014

Test sponsor: Hewlett-Packard Company

Hardware Availability: Jan-2014

Tested by: Hewlett-Packard Company

Software Availability: Nov-2013

L3 Cache: 25 MB I+D on chip per chip
Other Cache: None
Memory: 96 GB (12 x 8 GB 2Rx4 PC3-12800R-11, ECC)
Disk Subsystem: 4 x 300 GB 10 K SAS, RAID 5
Other Hardware: None

Base Pointers: 64-bit
Peak Pointers: 32/64-bit
Other Software: None

Results Table

Benchmark	Base						Peak					
	Seconds	Ratio	Seconds	Ratio	Seconds	Ratio	Seconds	Ratio	Seconds	Ratio	Seconds	Ratio
410.bwaves	41.6	326	42.4	320	41.6	326	41.6	326	42.4	320	41.6	326
416.gamess	654	29.9	654	30.0	654	29.9	555	35.3	554	35.3	555	35.3
433.milc	135	68.1	135	68.0	135	68.0	134	68.5	134	68.5	134	68.6
434.zeusmp	58.4	156	58.4	156	58.2	156	58.4	156	58.4	156	58.2	156
435.gromacs	181	39.5	181	39.6	180	39.6	181	39.5	181	39.6	180	39.6
436.cactusADM	24.1	496	24.3	492	24.5	488	24.1	496	24.3	492	24.5	488
437.leslie3d	54.0	174	49.2	191	45.6	206	54.0	174	49.2	191	45.6	206
444.namd	361	22.2	361	22.2	361	22.2	353	22.7	353	22.7	354	22.7
447.dealII	210	54.4	209	54.8	210	54.5	210	54.4	209	54.8	210	54.5
450.soplex	186	44.8	187	44.7	186	44.8	186	44.8	187	44.7	186	44.8
453.povray	124	43.0	124	43.1	125	42.6	104	51.2	104	50.9	104	51.0
454.calculix	186	44.3	189	43.7	186	44.3	171	48.2	172	48.1	171	48.1
459.GemsFDTD	68.6	155	68.2	155	68.4	155	64.9	163	67.1	158	65.3	162
465.tonto	283	34.8	283	34.7	283	34.8	224	43.9	224	44.0	224	44.0
470.lbm	30.2	455	30.8	446	30.4	452	30.2	455	30.8	446	30.4	452
481.wrf	116	96.3	116	95.9	117	95.6	116	96.3	116	95.9	117	95.6
482.sphinx3	279	69.8	279	69.9	279	69.7	275	70.9	279	69.8	278	70.2

Results appear in the order in which they were run. Bold underlined text indicates a median measurement.

Operating System Notes

```
Stack size set to unlimited using "ulimit -s unlimited"
Transparent Huge Pages enabled with:
echo always > /sys/kernel/mm/transparent_hugepage/enabled
Filesystem page cache cleared with:
echo 1 > /proc/sys/vm/drop_caches
```

Platform Notes

BIOS Configuration:
HP Power Regulator was set to "HP Static High Performance Mode"
HP Power Profile was set to "Maximum Performance"
Intel Hyperthreading was set to "Disabled"
Memory Refresh Rate was set to "1x Refresh"
Sysinfo program /home/cpu2006/config/sysinfo.rev6874.hp

Continued on next page



SPEC CFP2006 Result

Copyright 2006-2014 Standard Performance Evaluation Corporation

Hewlett-Packard Company

SPECfp2006 = 88.9

ProLiant DL360e Gen8
(2.40 GHz, Intel Xeon E5-2470 v2)

SPECfp_base2006 = 85.1

CPU2006 license: 3

Test date: Jan-2014

Test sponsor: Hewlett-Packard Company

Hardware Availability: Jan-2014

Tested by: Hewlett-Packard Company

Software Availability: Nov-2013

Platform Notes (Continued)

\$Rev: 6874 \$ \$Date:: 2013-11-20 #\$ e05b96ddac6c3d74bfe176502a0a2391
running on dl360egen8rwen Sat Jan 25 00:14:17 2014

This section contains SUT (System Under Test) info as seen by some common utilities. To remove or add to this section, see: <http://www.spec.org/cpu2006/Docs/config.html#sysinfo>

```
From /proc/cpuinfo
model name : Intel(R) Xeon(R) CPU E5-2470 v2 @ 2.40GHz
 2 "physical id"s (chips)
 20 "processors"
cores, siblings (Caution: counting these is hw and system dependent. The
following excerpts from /proc/cpuinfo might not be reliable. Use with
caution.)
  cpu cores : 10
  siblings  : 10
  physical 0: cores 0 1 2 3 4 8 9 10 11 12
  physical 1: cores 0 1 2 3 4 8 9 10 11 12
cache size : 25600 KB
```

```
From /proc/meminfo
MemTotal:      98903452 kB
HugePages_Total:      0
Hugepagesize:    2048 kB
```

```
/usr/bin/lsb_release -d
SUSE Linux Enterprise Server 11 (x86_64)
```

```
From /etc/*release* /etc/*version*
SuSE-release:
SUSE Linux Enterprise Server 11 (x86_64)
VERSION = 11
PATCHLEVEL = 3
```

```
uname -a:
Linux dl360egen8rwen 3.0.76-0.11-default #1 SMP Fri Jun 14 08:21:43 UTC 2013
(ccab990) x86_64 x86_64 x86_64 GNU/Linux
```

```
run-level 3 Jan 25 00:10 last=S
```

```
SPEC is set to: /home/cpu2006
Filesystem      Type  Size  Used Avail Use% Mounted on
/dev/sda2       ext3  549G  8.7G  539G   2% /
```

Additional information from dmidecode:

Warning: Use caution when you interpret this section. The 'dmidecode' program reads system data which is "intended to allow hardware to be accurately determined", but the intent may not be met, as there are frequent changes to hardware, firmware, and the "DMTF SMBIOS" standard.

BIOS HP P73 11/12/2013
Memory:

Continued on next page



SPEC CFP2006 Result

Copyright 2006-2014 Standard Performance Evaluation Corporation

Hewlett-Packard Company

SPECfp2006 = 88.9

ProLiant DL360e Gen8
(2.40 GHz, Intel Xeon E5-2470 v2)

SPECfp_base2006 = 85.1

CPU2006 license: 3

Test date: Jan-2014

Test sponsor: Hewlett-Packard Company

Hardware Availability: Jan-2014

Tested by: Hewlett-Packard Company

Software Availability: Nov-2013

Platform Notes (Continued)

12x HP 689911-071 8 GB 1600 MHz

(End of data from sysinfo program)

General Notes

Environment variables set by runspec before the start of the run:

KMP_AFFINITY = "granularity=fine,compact"

LD_LIBRARY_PATH = "/home/cpu2006/libs/32:/home/cpu2006/libs/64:/home/cpu2006/sh"

OMP_NUM_THREADS = "20"

Binaries compiled on a system with 1x Core i7-860 CPU + 8GB
memory using RedHat EL 6.4

Base Compiler Invocation

C benchmarks:

icc -m64

C++ benchmarks:

icpc -m64

Fortran benchmarks:

ifort -m64

Benchmarks using both Fortran and C:

icc -m64 ifort -m64

Base Portability Flags

```

410.bwaves: -DSPEC_CPU_LP64
416.gamess: -DSPEC_CPU_LP64
433.milc: -DSPEC_CPU_LP64
434.zeusmp: -DSPEC_CPU_LP64
435.gromacs: -DSPEC_CPU_LP64 -nofor_main
436.cactusADM: -DSPEC_CPU_LP64 -nofor_main
437.leslie3d: -DSPEC_CPU_LP64
444.namd: -DSPEC_CPU_LP64
447.dealII: -DSPEC_CPU_LP64
450.soplex: -DSPEC_CPU_LP64
453.povray: -DSPEC_CPU_LP64
454.calculix: -DSPEC_CPU_LP64 -nofor_main
459.GemsFDTD: -DSPEC_CPU_LP64
465.tonto: -DSPEC_CPU_LP64
470.lbm: -DSPEC_CPU_LP64
481.wrf: -DSPEC_CPU_LP64 -DSPEC_CPU_CASE_FLAG -DSPEC_CPU_LINUX

```

Continued on next page



SPEC CFP2006 Result

Copyright 2006-2014 Standard Performance Evaluation Corporation

Hewlett-Packard Company

SPECfp2006 = 88.9

ProLiant DL360e Gen8
(2.40 GHz, Intel Xeon E5-2470 v2)

SPECfp_base2006 = 85.1

CPU2006 license: 3

Test date: Jan-2014

Test sponsor: Hewlett-Packard Company

Hardware Availability: Jan-2014

Tested by: Hewlett-Packard Company

Software Availability: Nov-2013

Base Portability Flags (Continued)

482.sphinx3: -DSPEC_CPU_LP64

Base Optimization Flags

C benchmarks:

-xAVX -ipo -O3 -no-prec-div -parallel -opt-prefetch -ansi-alias

C++ benchmarks:

-xAVX -ipo -O3 -no-prec-div -opt-prefetch -ansi-alias

Fortran benchmarks:

-xAVX -ipo -O3 -no-prec-div -parallel -opt-prefetch

Benchmarks using both Fortran and C:

-xAVX -ipo -O3 -no-prec-div -parallel -opt-prefetch -ansi-alias

Peak Compiler Invocation

C benchmarks:

icc -m64

C++ benchmarks:

icpc -m64

Fortran benchmarks:

ifort -m64

Benchmarks using both Fortran and C:

icc -m64 ifort -m64

Peak Portability Flags

Same as Base Portability Flags

Peak Optimization Flags

C benchmarks:

433.milc: -xAVX(pass 2) -prof-gen(pass 1) -ipo(pass 2) -O3(pass 2)
-no-prec-div(pass 2) -prof-use(pass 2) -auto-ilp32
-ansi-alias

Continued on next page



SPEC CFP2006 Result

Copyright 2006-2014 Standard Performance Evaluation Corporation

Hewlett-Packard Company

SPECfp2006 = 88.9

ProLiant DL360e Gen8
(2.40 GHz, Intel Xeon E5-2470 v2)

SPECfp_base2006 = 85.1

CPU2006 license: 3

Test date: Jan-2014

Test sponsor: Hewlett-Packard Company

Hardware Availability: Jan-2014

Tested by: Hewlett-Packard Company

Software Availability: Nov-2013

Peak Optimization Flags (Continued)

470.lbm: basepeak = yes

482.sphinx3: -xAVX -ipo -O3 -no-prec-div -unroll2 -ansi-alias
-parallel

C++ benchmarks:

444.namd: -xAVX(pass 2) -prof-gen(pass 1) -ipo(pass 2) -O3(pass 2)
-no-prec-div(pass 2) -prof-use(pass 2) -fno-alias
-auto-ilp32

447.dealII: basepeak = yes

450.soplex: basepeak = yes

453.povray: -xAVX(pass 2) -prof-gen(pass 1) -ipo(pass 2) -O3(pass 2)
-no-prec-div(pass 2) -prof-use(pass 2) -unroll4 -ansi-alias

Fortran benchmarks:

410.bwaves: basepeak = yes

416.gamess: -xAVX(pass 2) -prof-gen(pass 1) -ipo(pass 2) -O3(pass 2)
-no-prec-div(pass 2) -prof-use(pass 2) -unroll2
-inline-level=0 -scalar-rep-

434.zeusmp: basepeak = yes

437.leslie3d: basepeak = yes

459.GemsFDTD: -xAVX(pass 2) -prof-gen(pass 1) -ipo(pass 2) -O3(pass 2)
-no-prec-div(pass 2) -prof-use(pass 2) -unroll2
-inline-level=0 -opt-prefetch -parallel

465.tonto: -xAVX(pass 2) -prof-gen(pass 1) -ipo(pass 2) -O3(pass 2)
-no-prec-div(pass 2) -prof-use(pass 2) -inline-calloc
-opt-malloc-options=3 -auto -unroll4

Benchmarks using both Fortran and C:

435.gromacs: basepeak = yes

436.cactusADM: basepeak = yes

454.calculix: -xAVX -ipo -O3 -no-prec-div -auto-ilp32 -ansi-alias

481.wrf: basepeak = yes



SPEC CFP2006 Result

Copyright 2006-2014 Standard Performance Evaluation Corporation

Hewlett-Packard Company

ProLiant DL360e Gen8
(2.40 GHz, Intel Xeon E5-2470 v2)

SPECfp2006 = 88.9

SPECfp_base2006 = 85.1

CPU2006 license: 3

Test sponsor: Hewlett-Packard Company

Tested by: Hewlett-Packard Company

Test date: Jan-2014

Hardware Availability: Jan-2014

Software Availability: Nov-2013

The flags files that were used to format this result can be browsed at

<http://www.spec.org/cpu2006/flags/Intel-ic14.0-official-linux64.20140128.html>

<http://www.spec.org/cpu2006/flags/HP-Platform-Flags-Intel-V1.2-revB.20131009.html>

You can also download the XML flags sources by saving the following links:

<http://www.spec.org/cpu2006/flags/Intel-ic14.0-official-linux64.20140128.xml>

<http://www.spec.org/cpu2006/flags/HP-Platform-Flags-Intel-V1.2-revB.20131009.xml>

SPEC and SPECfp are registered trademarks of the Standard Performance Evaluation Corporation. All other brand and product names appearing in this result are trademarks or registered trademarks of their respective holders.

For questions about this result, please contact the tester.
For other inquiries, please contact webmaster@spec.org.

Tested with SPEC CPU2006 v1.2.
Report generated on Thu Jul 24 21:40:40 2014 by SPEC CPU2006 PS/PDF formatter v6932.
Originally published on 11 March 2014.