



SPEC® CFP2006 Result

Copyright 2006-2014 Standard Performance Evaluation Corporation

Hewlett-Packard Company

ProLiant DL580 G7
(2.66 GHz, Intel Xeon E7-8837)

SPECfp®2006 = 56.8

SPECfp_base2006 = 54.1

CPU2006 license: 3

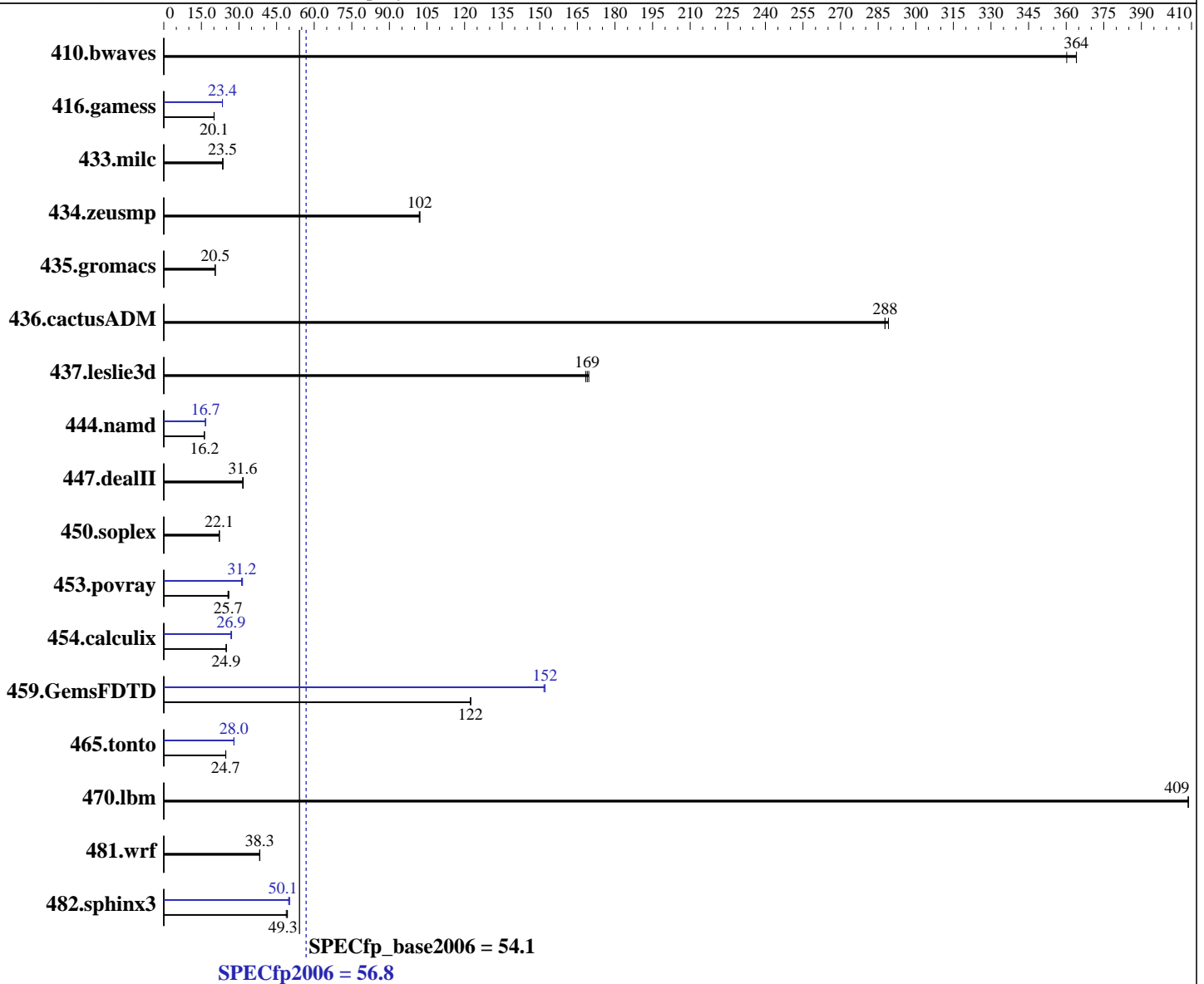
Test sponsor: Hewlett-Packard Company

Tested by: Hewlett-Packard Company

Test date: Aug-2012

Hardware Availability: Dec-2011

Software Availability: Oct-2011



Hardware

CPU Name: Intel Xeon E7-8837
 CPU Characteristics: Intel Turbo Boost Technology up to 2.80 GHz
 CPU MHz: 2667
 FPU: Integrated
 CPU(s) enabled: 32 cores, 4 chips, 8 cores/chip
 CPU(s) orderable: 2,4 chips
 Primary Cache: 32 KB I + 32 KB D on chip per core
 Secondary Cache: 256 KB I+D on chip per core

Continued on next page

Software

Operating System: SUSE Linux Enterprise Server 11 SP1 (x86_64) 2.6.32.12-0.7-default
 Compiler: C/C++: Version 12.1.0.225 of Intel C++ Studio XE for Linux;
 Fortran: Version 12.1.0.225 of Intel Fortran Studio XE for Linux
 Auto Parallel: Yes
 File System: ext3
 System State: Run level 3 (multi-user)

Continued on next page



SPEC CFP2006 Result

Copyright 2006-2014 Standard Performance Evaluation Corporation

Hewlett-Packard Company

SPECfp2006 = **56.8**

ProLiant DL580 G7
(2.66 GHz, Intel Xeon E7-8837)

SPECfp_base2006 = **54.1**

CPU2006 license: 3

Test date: Aug-2012

Test sponsor: Hewlett-Packard Company

Hardware Availability: Dec-2011

Tested by: Hewlett-Packard Company

Software Availability: Oct-2011

L3 Cache: 24 MB I+D on chip per chip
Other Cache: None
Memory: 1 TB (64 x 16 GB 2Rx4 PC3-10600R-9, ECC)
Disk Subsystem: 5 x 900 GB 6G SAS 10K, RAID 5
Other Hardware: None

Base Pointers: 64-bit
Peak Pointers: 32/64-bit
Other Software: None

Results Table

Benchmark	Base						Peak					
	Seconds	Ratio	Seconds	Ratio	Seconds	Ratio	Seconds	Ratio	Seconds	Ratio	Seconds	Ratio
410.bwaves	<u>37.3</u>	<u>364</u>	37.3	364	37.7	360	<u>37.3</u>	<u>364</u>	37.3	364	37.7	360
416.gamess	<u>975</u>	<u>20.1</u>	975	20.1	977	20.0	836	23.4	<u>837</u>	<u>23.4</u>	837	23.4
433.milc	392	23.4	388	23.6	<u>391</u>	<u>23.5</u>	392	23.4	388	23.6	<u>391</u>	<u>23.5</u>
434.zeusmp	89.1	102	89.3	102	<u>89.1</u>	<u>102</u>	89.1	102	89.3	102	<u>89.1</u>	<u>102</u>
435.gromacs	350	20.4	347	20.6	<u>348</u>	<u>20.5</u>	350	20.4	347	20.6	<u>348</u>	<u>20.5</u>
436.cactusADM	41.3	289	41.5	288	<u>41.5</u>	<u>288</u>	41.3	289	41.5	288	<u>41.5</u>	<u>288</u>
437.leslie3d	<u>55.6</u>	<u>169</u>	55.8	168	55.4	170	<u>55.6</u>	<u>169</u>	55.8	168	55.4	170
444.namd	497	16.1	<u>495</u>	<u>16.2</u>	495	16.2	483	16.6	<u>482</u>	<u>16.7</u>	481	16.7
447.dealII	<u>362</u>	<u>31.6</u>	361	31.7	364	31.5	<u>362</u>	<u>31.6</u>	361	31.7	364	31.5
450.soplex	378	22.1	<u>377</u>	<u>22.1</u>	376	22.2	378	22.1	<u>377</u>	<u>22.1</u>	376	22.2
453.povray	<u>207</u>	<u>25.7</u>	205	26.0	207	25.6	169	31.4	171	31.0	<u>171</u>	<u>31.2</u>
454.calculix	<u>331</u>	<u>24.9</u>	332	24.9	331	24.9	308	26.8	<u>307</u>	<u>26.9</u>	305	27.1
459.GemsFDTD	86.7	122	<u>86.7</u>	<u>122</u>	86.7	122	70.0	152	69.8	152	<u>69.8</u>	<u>152</u>
465.tonto	398	24.8	398	24.7	<u>398</u>	<u>24.7</u>	352	28.0	<u>351</u>	<u>28.0</u>	351	28.0
470.lbm	<u>33.6</u>	<u>409</u>	33.6	409	33.6	409	<u>33.6</u>	<u>409</u>	33.6	409	33.6	409
481.wrf	292	38.2	<u>292</u>	<u>38.3</u>	291	38.3	292	38.2	<u>292</u>	<u>38.3</u>	291	38.3
482.sphinx3	<u>396</u>	<u>49.3</u>	395	49.3	399	48.9	391	49.8	<u>389</u>	<u>50.1</u>	388	50.2

Results appear in the order in which they were run. Bold underlined text indicates a median measurement.

Operating System Notes

Stack size set to unlimited using "ulimit -s unlimited"
runspec command invoked through numactl i.e.:
numactl --interleave=all runspec <etc>

Platform Notes

BIOS Configuration:

HP Power Profile set to Maximum Performance
Thermal Configuration set to Increased Cooling
Collaborative Power Control set to Disabled
Sysinfo program /cpu2006/config/sysinfo.rev6800
\$Rev: 6800 \$ \$Date:: 2011-10-11 #\$ 6f2ebdff5032aaa42e583f96b07f99d3
running on dl580g7-r88 Sat Aug 11 16:18:28 2012

Continued on next page



SPEC CFP2006 Result

Copyright 2006-2014 Standard Performance Evaluation Corporation

Hewlett-Packard Company

SPECfp2006 = 56.8

ProLiant DL580 G7
(2.66 GHz, Intel Xeon E7-8837)

SPECfp_base2006 = 54.1

CPU2006 license: 3

Test date: Aug-2012

Test sponsor: Hewlett-Packard Company

Hardware Availability: Dec-2011

Tested by: Hewlett-Packard Company

Software Availability: Oct-2011

Platform Notes (Continued)

This section contains SUT (System Under Test) info as seen by some common utilities. To remove or add to this section, see: <http://www.spec.org/cpu2006/Docs/config.html#sysinfo>

```

From /proc/cpuinfo
model name      : Intel(R) Xeon(R) CPU E7- 8837 @ 2.67GHz
 4 "physical id"s (chips)
32 "processors"
cores, siblings (Caution: counting these is hw and system dependent. The
following excerpts from /proc/cpuinfo might not be reliable. Use with
caution.)
  cpu cores    : 8
  siblings     : 8
  physical 0: cores 0 1 2 9 16 18 24 25
  physical 1: cores 0 1 2 8 17 18 24 25
  physical 2: cores 0 1 2 8 17 18 24 25
  physical 3: cores 0 1 8 9 16 17 24 25
cache size     : 24576 KB

```

```

From /proc/meminfo
MemTotal:      1058831952 kB
HugePages_Total: 0
Hugepagesize:  2048 kB

```

```

From /etc/*release* /etc/*version*
SuSE-release:
SUSE Linux Enterprise Server 11 (x86_64)
VERSION = 11
PATCHLEVEL = 1

```

```

uname -a:
Linux dl580g7-r88 2.6.32.12-0.7-default #1 SMP 2010-05-20 11:14:20 +0200
x86_64 x86_64 x86_64 GNU/Linux

```

run-level 3 Aug 10 13:58 last=S

```

SPEC is set to: /cpu2006
Filesystem      Type      Size  Used Avail Use% Mounted on
/dev/cciss/c0d0p2
ext3            3.3T    76G  3.0T   3% /

```

```

Additional information from dmidecode:
BIOS HP P65 12/01/2011

```

(End of data from sysinfo program)

General Notes

Environment variables set by runspec before the start of the run:

```

KMP_AFFINITY = "granularity=fine,scatter"
LD_LIBRARY_PATH = "/cpu2006/libs/32:/cpu2006/libs/64"

```

Continued on next page



SPEC CFP2006 Result

Copyright 2006-2014 Standard Performance Evaluation Corporation

Hewlett-Packard Company

SPECfp2006 = 56.8

ProLiant DL580 G7
(2.66 GHz, Intel Xeon E7-8837)

SPECfp_base2006 = 54.1

CPU2006 license: 3

Test date: Aug-2012

Test sponsor: Hewlett-Packard Company

Hardware Availability: Dec-2011

Tested by: Hewlett-Packard Company

Software Availability: Oct-2011

General Notes (Continued)

OMP_NUM_THREADS = "16"

Binaries compiled on a system with 1x Core i7-860 CPU + 8GB memory using RHEL5.5

Base Compiler Invocation

C benchmarks:

icc -m64

C++ benchmarks:

icpc -m64

Fortran benchmarks:

ifort -m64

Benchmarks using both Fortran and C:

icc -m64 ifort -m64

Base Portability Flags

410.bwaves: -DSPEC_CPU_LP64
 416.gamess: -DSPEC_CPU_LP64
 433.milc: -DSPEC_CPU_LP64
 434.zeusmp: -DSPEC_CPU_LP64
 435.gromacs: -DSPEC_CPU_LP64 -nofor_main
 436.cactusADM: -DSPEC_CPU_LP64 -nofor_main
 437.leslie3d: -DSPEC_CPU_LP64
 444.namd: -DSPEC_CPU_LP64
 447.dealII: -DSPEC_CPU_LP64
 450.soplex: -DSPEC_CPU_LP64
 453.povray: -DSPEC_CPU_LP64
 454.calculix: -DSPEC_CPU_LP64 -nofor_main
 459.GemsFDTD: -DSPEC_CPU_LP64
 465.tonto: -DSPEC_CPU_LP64
 470.lbm: -DSPEC_CPU_LP64
 481.wrf: -DSPEC_CPU_LP64 -DSPEC_CPU_CASE_FLAG -DSPEC_CPU_LINUX
 482.sphinx3: -DSPEC_CPU_LP64

Base Optimization Flags

C benchmarks:

-xSSE4.2 -ipo -O3 -no-prec-div -static -parallel -opt-prefetch
-ansi-alias

Continued on next page



SPEC CFP2006 Result

Copyright 2006-2014 Standard Performance Evaluation Corporation

Hewlett-Packard Company

SPECfp2006 = 56.8

ProLiant DL580 G7
(2.66 GHz, Intel Xeon E7-8837)

SPECfp_base2006 = 54.1

CPU2006 license: 3

Test date: Aug-2012

Test sponsor: Hewlett-Packard Company

Hardware Availability: Dec-2011

Tested by: Hewlett-Packard Company

Software Availability: Oct-2011

Base Optimization Flags (Continued)

C++ benchmarks:

`-xSSE4.2 -ipo -O3 -no-prec-div -static -opt-prefetch -ansi-alias`

Fortran benchmarks:

`-xSSE4.2 -ipo -O3 -no-prec-div -static -parallel -opt-prefetch`

Benchmarks using both Fortran and C:

`-xSSE4.2 -ipo -O3 -no-prec-div -static -parallel -opt-prefetch
-ansi-alias`

Peak Compiler Invocation

C benchmarks:

`icc -m64`

C++ benchmarks:

`icpc -m64`

Fortran benchmarks:

`ifort -m64`

Benchmarks using both Fortran and C:

`icc -m64 ifort -m64`

Peak Portability Flags

Same as Base Portability Flags

Peak Optimization Flags

C benchmarks:

`433.milc: basepeak = yes`

`470.lbm: basepeak = yes`

`482.sphinx3: -xSSE4.2 -ipo -O3 -no-prec-div -unroll2 -ansi-alias
-parallel`

C++ benchmarks:

`444.namd: -xSSE4.2(pass 2) -prof-gen(pass 1) -ipo(pass 2) -O3(pass 2)
-no-prec-div(pass 2) -prof-use(pass 2) -fno-alias
-auto-ilp32`

Continued on next page



SPEC CFP2006 Result

Copyright 2006-2014 Standard Performance Evaluation Corporation

Hewlett-Packard Company

SPECfp2006 = 56.8

ProLiant DL580 G7
(2.66 GHz, Intel Xeon E7-8837)

SPECfp_base2006 = 54.1

CPU2006 license: 3

Test date: Aug-2012

Test sponsor: Hewlett-Packard Company

Hardware Availability: Dec-2011

Tested by: Hewlett-Packard Company

Software Availability: Oct-2011

Peak Optimization Flags (Continued)

447.deallI: basepeak = yes

450.soplex: basepeak = yes

453.povray: -xSSE4.2(pass 2) -prof-gen(pass 1) -ipo(pass 2) -O3(pass 2)
-no-prec-div(pass 2) -prof-use(pass 2) -unroll4 -ansi-alias

Fortran benchmarks:

410.bwaves: basepeak = yes

416.gamess: -xSSE4.2(pass 2) -prof-gen(pass 1) -ipo(pass 2) -O3(pass 2)
-no-prec-div(pass 2) -prof-use(pass 2) -unroll2
-inline-level=0 -scalar-rep- -static

434.zeusmp: basepeak = yes

437.leslie3d: basepeak = yes

459.GemsFDTD: -xSSE4.2(pass 2) -prof-gen(pass 1) -ipo(pass 2) -O3(pass 2)
-no-prec-div(pass 2) -prof-use(pass 2) -unroll2
-inline-level=0 -opt-prefetch -parallel

465.tonto: -xSSE4.2(pass 2) -prof-gen(pass 1) -ipo(pass 2) -O3(pass 2)
-no-prec-div(pass 2) -prof-use(pass 2) -inline-alloc
-opt-malloc-options=3 -auto -unroll4

Benchmarks using both Fortran and C:

435.gromacs: basepeak = yes

436.cactusADM: basepeak = yes

454.calculix: -xSSE4.2 -ipo -O3 -no-prec-div -auto-ilp32 -ansi-alias

481.wrf: basepeak = yes

The flags files that were used to format this result can be browsed at

<http://www.spec.org/cpu2006/flags/Intel-ic12.1-official-linux64.20120425.html>

<http://www.spec.org/cpu2006/flags/HP-Platform-Flags-Intel-V1.2-A.20120829.html>

You can also download the XML flags sources by saving the following links:

<http://www.spec.org/cpu2006/flags/Intel-ic12.1-official-linux64.20120425.xml>

<http://www.spec.org/cpu2006/flags/HP-Platform-Flags-Intel-V1.2-A.20120829.xml>



SPEC CFP2006 Result

Copyright 2006-2014 Standard Performance Evaluation Corporation

Hewlett-Packard Company

ProLiant DL580 G7
(2.66 GHz, Intel Xeon E7-8837)

SPECfp2006 = 56.8

SPECfp_base2006 = 54.1

CPU2006 license: 3

Test sponsor: Hewlett-Packard Company

Tested by: Hewlett-Packard Company

Test date: Aug-2012

Hardware Availability: Dec-2011

Software Availability: Oct-2011

SPEC and SPECfp are registered trademarks of the Standard Performance Evaluation Corporation. All other brand and product names appearing in this result are trademarks or registered trademarks of their respective holders.

For questions about this result, please contact the tester.
For other inquiries, please contact webmaster@spec.org.

Tested with SPEC CPU2006 v1.2.
Report generated on Thu Jul 24 13:45:04 2014 by SPEC CPU2006 PS/PDF formatter v6932.
Originally published on 23 October 2012.