



SPEC[®] CFP2006 Result

Copyright 2006-2014 Standard Performance Evaluation Corporation

Fujitsu

SPECfp[®]2006 = **78.2**

PRIMERGY CX270 S1, Intel Xeon E5-2665, 2.40 GHz

SPECfp_base2006 = **74.0**

CPU2006 license: 19

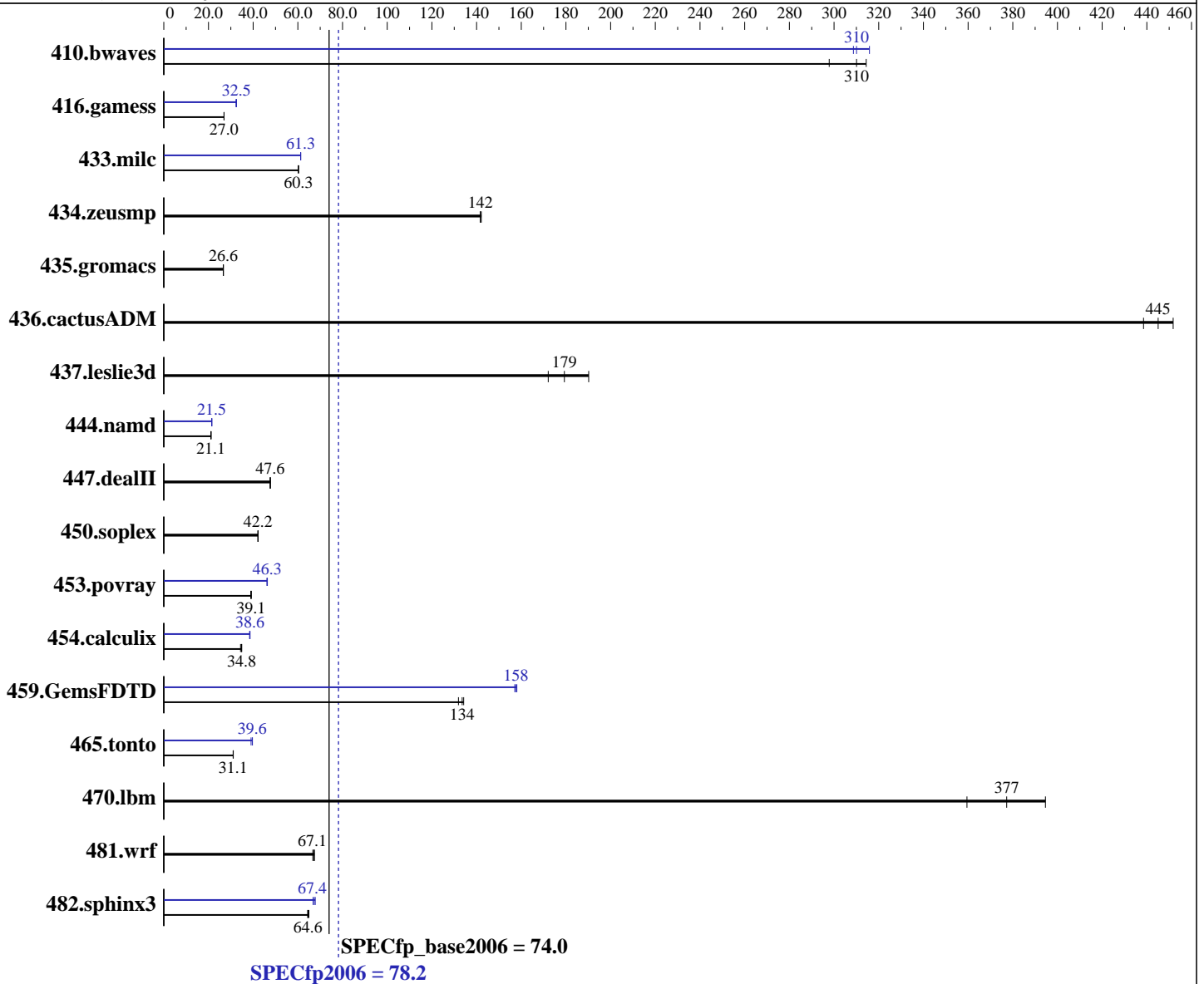
Test sponsor: Fujitsu

Tested by: Fujitsu

Test date: Mar-2012

Hardware Availability: Jun-2012

Software Availability: Dec-2011



Hardware

CPU Name: Intel Xeon E5-2665
 CPU Characteristics: Intel Turbo Boost Technology up to 3.10 GHz
 CPU MHz: 2400
 FPU: Integrated
 CPU(s) enabled: 16 cores, 2 chips, 8 cores/chip
 CPU(s) orderable: 2 chips
 Primary Cache: 32 KB I + 32 KB D on chip per core
 Secondary Cache: 256 KB I+D on chip per core

Continued on next page

Software

Operating System: Red Hat Enterprise Linux Server release 6.2 (Santiago)
 2.6.32-220.el6.x86_64
 Compiler: C/C++: Version 12.1.0.225 of Intel C++ Studio XE for Linux;
 Fortran: Version 12.1.0.225 of Intel Fortran Studio XE for Linux
 Auto Parallel: Yes
 File System: ext4

Continued on next page



SPEC CFP2006 Result

Copyright 2006-2014 Standard Performance Evaluation Corporation

Fujitsu

SPECfp2006 = **78.2**

PRIMERGY CX270 S1, Intel Xeon E5-2665, 2.40 GHz

SPECfp_base2006 = **74.0**

CPU2006 license: 19

Test date: Mar-2012

Test sponsor: Fujitsu

Hardware Availability: Jun-2012

Tested by: Fujitsu

Software Availability: Dec-2011

L3 Cache: 20 MB I+D on chip per chip
 Other Cache: None
 Memory: 128 GB (16 x 8 GB 2Rx4 PC3L-12800R-11, ECC)
 Disk Subsystem: 1 x SATA, 500 GB, 7200 RPM
 Other Hardware: None

System State: Run level 3 (multi-user)
 Base Pointers: 64-bit
 Peak Pointers: 32/64-bit
 Other Software: None

Results Table

Benchmark	Base						Peak					
	Seconds	Ratio	Seconds	Ratio	Seconds	Ratio	Seconds	Ratio	Seconds	Ratio	Seconds	Ratio
410.bwaves	45.6	298	43.2	314	43.8	310	43.0	316	44.0	309	43.8	310
416.gamess	725	27.0	726	27.0	726	27.0	603	32.5	601	32.6	606	32.3
433.milc	152	60.2	152	60.3	152	60.3	150	61.2	150	61.3	150	61.3
434.zeusmp	64.0	142	64.2	142	64.2	142	64.0	142	64.2	142	64.2	142
435.gromacs	268	26.6	268	26.6	268	26.7	268	26.6	268	26.6	268	26.7
436.cactusADM	27.3	439	26.5	452	26.8	445	27.3	439	26.5	452	26.8	445
437.leslie3d	49.4	190	54.6	172	52.4	179	49.4	190	54.6	172	52.4	179
444.namd	380	21.1	380	21.1	380	21.1	374	21.5	374	21.5	373	21.5
447.dealII	240	47.7	240	47.6	240	47.6	240	47.7	240	47.6	240	47.6
450.soplex	198	42.2	198	42.2	198	42.1	198	42.2	198	42.2	198	42.1
453.povray	136	39.1	136	39.2	137	38.9	115	46.1	115	46.4	115	46.3
454.calculix	237	34.9	237	34.8	240	34.4	214	38.6	214	38.6	215	38.4
459.GemsFDTD	79.4	134	80.4	132	79.0	134	67.5	157	67.1	158	67.3	158
465.tonto	316	31.1	317	31.1	317	31.0	248	39.7	252	39.1	248	39.6
470.lbm	38.2	359	34.8	395	36.4	377	38.2	359	34.8	395	36.4	377
481.wrf	166	67.4	166	67.1	167	66.7	166	67.4	166	67.1	167	66.7
482.sphinx3	300	64.9	303	64.4	302	64.6	289	67.4	292	66.8	287	67.8

Results appear in the order in which they were run. Bold underlined text indicates a median measurement.

Operating System Notes

Stack size set to unlimited using "ulimit -s unlimited"
 Transparent Huge Pages enabled with:
 echo always > /sys/kernel/mm/redhat_transparent_hugepage/enabled

Platform Notes

BIOS configuration:
 Intel HT Technology = Disable



SPEC CFP2006 Result

Copyright 2006-2014 Standard Performance Evaluation Corporation

Fujitsu

SPECfp2006 = 78.2

PRIMERGY CX270 S1, Intel Xeon E5-2665, 2.40 GHz

SPECfp_base2006 = 74.0

CPU2006 license: 19

Test date: Mar-2012

Test sponsor: Fujitsu

Hardware Availability: Jun-2012

Tested by: Fujitsu

Software Availability: Dec-2011

General Notes

Environment variables set by runspec before the start of the run:

```
KMP_AFFINITY = "granularity=fine,scatter"
LD_LIBRARY_PATH = "/SPECcpu2006/libs/32:/SPECcpu2006/libs/64"
OMP_NUM_THREADS = "16"
```

Binaries compiled on a system with 1x Core i7-860 CPU + 8GB memory using RHEL5.5

This result was measured on the PRIMERGY CX250 S1. The PRIMERGY CX250 S1 and the PRIMERGY CX270 S1 are electronically equivalent.

For information about Fujitsu please visit: <http://www.fujitsu.com>

Base Compiler Invocation

C benchmarks:

```
icc -m64
```

C++ benchmarks:

```
icpc -m64
```

Fortran benchmarks:

```
ifort -m64
```

Benchmarks using both Fortran and C:

```
icc -m64 ifort -m64
```

Base Portability Flags

```
410.bwaves: -DSPEC_CPU_LP64
416.gamess: -DSPEC_CPU_LP64
433.milc: -DSPEC_CPU_LP64
434.zeusmp: -DSPEC_CPU_LP64
435.gromacs: -DSPEC_CPU_LP64 -nofor_main
436.cactusADM: -DSPEC_CPU_LP64 -nofor_main
437.leslie3d: -DSPEC_CPU_LP64
444.namd: -DSPEC_CPU_LP64
447.dealII: -DSPEC_CPU_LP64
450.soplex: -DSPEC_CPU_LP64
453.povray: -DSPEC_CPU_LP64
454.calculix: -DSPEC_CPU_LP64 -nofor_main
459.GemsFDTD: -DSPEC_CPU_LP64
465.tonto: -DSPEC_CPU_LP64
470.lbm: -DSPEC_CPU_LP64
481.wrf: -DSPEC_CPU_LP64 -DSPEC_CPU_CASE_FLAG -DSPEC_CPU_LINUX
482.sphinx3: -DSPEC_CPU_LP64
```



SPEC CFP2006 Result

Copyright 2006-2014 Standard Performance Evaluation Corporation

Fujitsu

SPECfp2006 = 78.2

PRIMERGY CX270 S1, Intel Xeon E5-2665, 2.40 GHz

SPECfp_base2006 = 74.0

CPU2006 license: 19
Test sponsor: Fujitsu
Tested by: Fujitsu

Test date: Mar-2012
Hardware Availability: Jun-2012
Software Availability: Dec-2011

Base Optimization Flags

C benchmarks:

`-xAVX -ipo -O3 -no-prec-div -static -parallel -opt-prefetch
-ansi-alias`

C++ benchmarks:

`-xAVX -ipo -O3 -no-prec-div -static -opt-prefetch -ansi-alias`

Fortran benchmarks:

`-xAVX -ipo -O3 -no-prec-div -static -parallel -opt-prefetch`

Benchmarks using both Fortran and C:

`-xAVX -ipo -O3 -no-prec-div -static -parallel -opt-prefetch
-ansi-alias`

Peak Compiler Invocation

C benchmarks:

`icc -m64`

C++ benchmarks:

`icpc -m64`

Fortran benchmarks:

`ifort -m64`

Benchmarks using both Fortran and C:

`icc -m64 ifort -m64`

Peak Portability Flags

Same as Base Portability Flags

Peak Optimization Flags

C benchmarks:

433.milc: `-xAVX(pass 2) -prof-gen(pass 1) -ipo(pass 2) -O3(pass 2)
-no-prec-div(pass 2) -prof-use(pass 2) -static -auto-ilp32
-ansi-alias`

470.lbm: `basepeak = yes`

482.sphinx3: `-xAVX -ipo -O3 -no-prec-div -unroll2 -ansi-alias
-parallel`

Continued on next page



SPEC CFP2006 Result

Copyright 2006-2014 Standard Performance Evaluation Corporation

Fujitsu

SPECfp2006 = 78.2

PRIMERGY CX270 S1, Intel Xeon E5-2665, 2.40 GHz

SPECfp_base2006 = 74.0

CPU2006 license: 19

Test date: Mar-2012

Test sponsor: Fujitsu

Hardware Availability: Jun-2012

Tested by: Fujitsu

Software Availability: Dec-2011

Peak Optimization Flags (Continued)

C++ benchmarks:

444.namd: -xAVX(pass 2) -prof-gen(pass 1) -ipo(pass 2) -O3(pass 2)
-no-prec-div(pass 2) -prof-use(pass 2) -fno-alias
-auto-ilp32

447.dealIII: basepeak = yes

450.soplex: basepeak = yes

453.povray: -xAVX(pass 2) -prof-gen(pass 1) -ipo(pass 2) -O3(pass 2)
-no-prec-div(pass 2) -prof-use(pass 2) -unroll4 -ansi-alias

Fortran benchmarks:

410.bwaves: -xAVX -ipo -O3 -no-prec-div -opt-prefetch -parallel
-static

416.gamess: -xAVX(pass 2) -prof-gen(pass 1) -ipo(pass 2) -O3(pass 2)
-no-prec-div(pass 2) -prof-use(pass 2) -unroll2
-inline-level=0 -scalar-rep- -static

434.zeusmp: basepeak = yes

437.leslie3d: basepeak = yes

459.GemsFDTD: -xAVX(pass 2) -prof-gen(pass 1) -ipo(pass 2) -O3(pass 2)
-no-prec-div(pass 2) -prof-use(pass 2) -unroll2
-inline-level=0 -opt-prefetch -parallel

465.tonto: -xAVX(pass 2) -prof-gen(pass 1) -ipo(pass 2) -O3(pass 2)
-no-prec-div(pass 2) -prof-use(pass 2) -inline-calloc
-opt-malloc-options=3 -auto -unroll4

Benchmarks using both Fortran and C:

435.gromacs: basepeak = yes

436.cactusADM: basepeak = yes

454.calculix: -xAVX -ipo -O3 -no-prec-div -auto-ilp32 -ansi-alias

481.wrf: basepeak = yes

The flags files that were used to format this result can be browsed at

<http://www.spec.org/cpu2006/flags/Intel-ic12.1-official-linux64.20111122.html>

<http://www.spec.org/cpu2006/flags/Fujitsu-Platform.20120313.01.html>



SPEC CFP2006 Result

Copyright 2006-2014 Standard Performance Evaluation Corporation

Fujitsu

SPECfp2006 = 78.2

PRIMERGY CX270 S1, Intel Xeon E5-2665, 2.40 GHz

SPECfp_base2006 = 74.0

CPU2006 license: 19

Test sponsor: Fujitsu

Tested by: Fujitsu

Test date: Mar-2012

Hardware Availability: Jun-2012

Software Availability: Dec-2011

You can also download the XML flags sources by saving the following links:

<http://www.spec.org/cpu2006/flags/Intel-ic12.1-official-linux64.20111122.xml>

<http://www.spec.org/cpu2006/flags/Fujitsu-Platform.20120313.01.xml>

SPEC and SPECfp are registered trademarks of the Standard Performance Evaluation Corporation. All other brand and product names appearing in this result are trademarks or registered trademarks of their respective holders.

For questions about this result, please contact the tester.
For other inquiries, please contact webmaster@spec.org.

Tested with SPEC CPU2006 v1.2.
Report generated on Thu Jul 24 12:37:49 2014 by SPEC CPU2006 PS/PDF formatter v6932.
Originally published on 17 July 2012.