



SPEC[®] CFP2006 Result

Copyright 2006-2014 Standard Performance Evaluation Corporation

Fujitsu

SPECfp[®]2006 = **85.2**

PRIMERGY CX250 S1, Intel Xeon E5-2680, 2.70 GHz

SPECfp_base2006 = **80.5**

CPU2006 license: 19

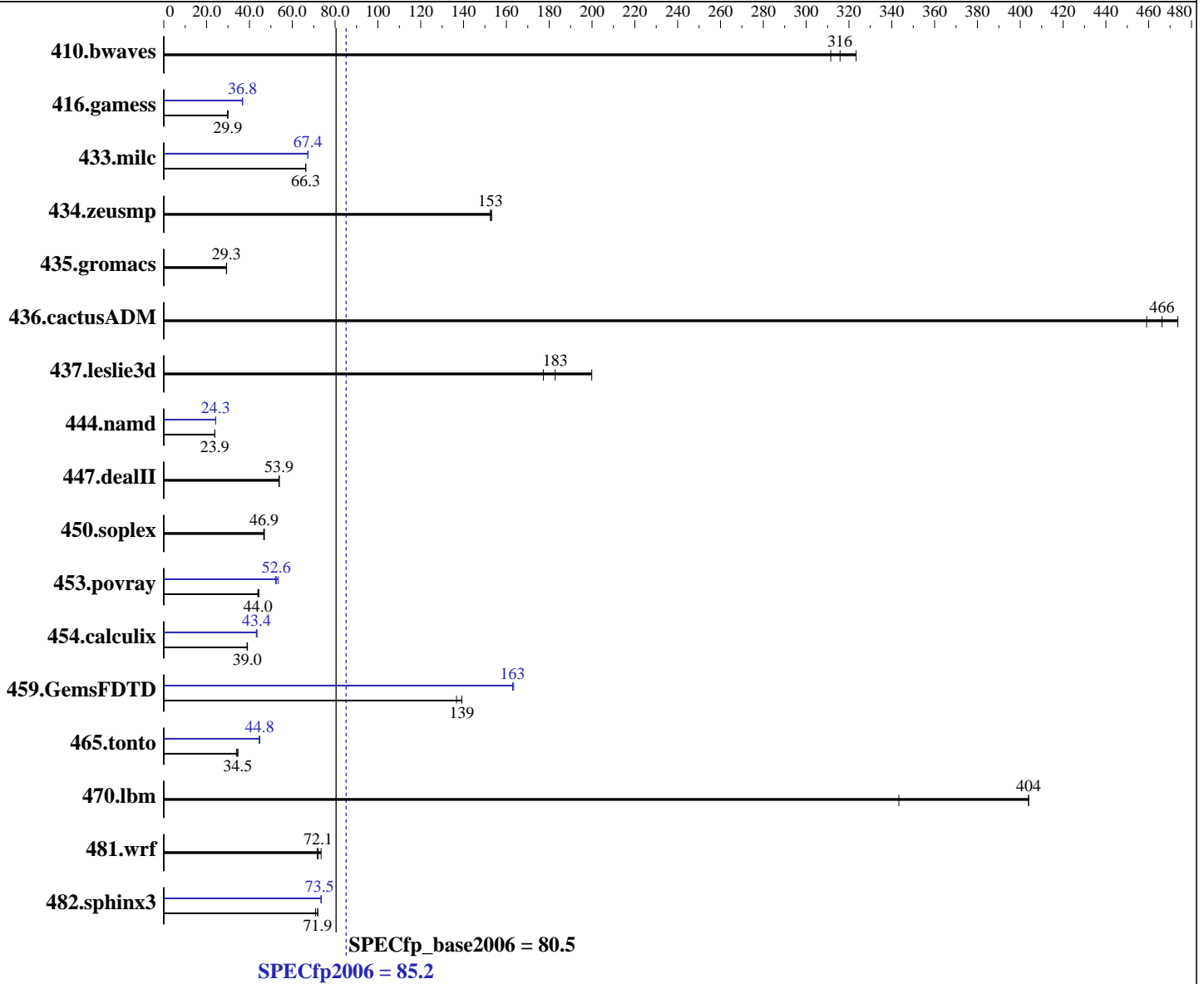
Test date: Mar-2012

Test sponsor: Fujitsu

Hardware Availability: Jun-2012

Tested by: Fujitsu

Software Availability: Dec-2011



Hardware

CPU Name: Intel Xeon E5-2680
 CPU Characteristics: Intel Turbo Boost Technology up to 3.50 GHz
 CPU MHz: 2700
 FPU: Integrated
 CPU(s) enabled: 16 cores, 2 chips, 8 cores/chip
 CPU(s) orderable: 2 chips
 Primary Cache: 32 KB I + 32 KB D on chip per core
 Secondary Cache: 256 KB I+D on chip per core

Continued on next page

Software

Operating System: Red Hat Enterprise Linux Server release 6.2 (Santiago)
 2.6.32-220.el6.x86_64
 Compiler: C/C++: Version 12.1.0.225 of Intel C++ Studio XE for Linux;
 Fortran: Version 12.1.0.225 of Intel Fortran Studio XE for Linux
 Auto Parallel: Yes
 File System: ext4

Continued on next page



SPEC CFP2006 Result

Copyright 2006-2014 Standard Performance Evaluation Corporation

Fujitsu

SPECfp2006 = **85.2**

PRIMERGY CX250 S1, Intel Xeon E5-2680, 2.70 GHz

SPECfp_base2006 = **80.5**

CPU2006 license: 19

Test date: Mar-2012

Test sponsor: Fujitsu

Hardware Availability: Jun-2012

Tested by: Fujitsu

Software Availability: Dec-2011

L3 Cache: 20 MB I+D on chip per chip
 Other Cache: None
 Memory: 128 GB (16 x 8 GB 2Rx4 PC3L-12800R-11, ECC)
 Disk Subsystem: 1 x SATA, 500 GB, 7200 RPM
 Other Hardware: None

System State: Run level 3 (multi-user)
 Base Pointers: 64-bit
 Peak Pointers: 32/64-bit
 Other Software: None

Results Table

Benchmark	Base						Peak					
	Seconds	Ratio	Seconds	Ratio	Seconds	Ratio	Seconds	Ratio	Seconds	Ratio	Seconds	Ratio
410.bwaves	43.6	312	42.0	323	43.0	316	43.6	312	42.0	323	43.0	316
416.gamess	654	29.9	658	29.7	654	29.9	532	36.8	533	36.7	532	36.8
433.milc	138	66.3	138	66.3	139	66.2	137	67.2	136	67.4	136	67.4
434.zeusmp	59.4	153	59.6	153	59.6	153	59.4	153	59.6	153	59.6	153
435.gromacs	244	29.2	243	29.3	244	29.3	244	29.2	243	29.3	244	29.3
436.cactusADM	25.2	474	25.6	466	26.0	459	25.2	474	25.6	466	26.0	459
437.leslie3d	51.4	183	47.0	200	53.0	177	51.4	183	47.0	200	53.0	177
444.namd	336	23.8	336	23.9	336	23.9	331	24.3	331	24.2	331	24.3
447.dealII	212	53.9	212	53.9	212	53.8	212	53.9	212	53.9	212	53.8
450.soplex	178	46.9	179	46.7	178	47.0	178	46.9	179	46.7	178	47.0
453.povray	120	44.4	121	44.0	121	44.0	101	52.6	102	52.3	99.6	53.4
454.calculix	212	39.0	211	39.1	212	38.9	191	43.2	190	43.5	190	43.4
459.GemsFDTD	76.2	139	76.2	139	77.6	137	65.1	163	65.1	163	64.9	163
465.tonto	290	33.9	285	34.5	285	34.6	220	44.8	221	44.5	220	44.8
470.lbm	34.0	404	40.0	343	34.0	404	34.0	404	40.0	343	34.0	404
481.wrf	155	72.1	152	73.5	156	71.7	155	72.1	152	73.5	156	71.7
482.sphinx3	271	71.9	275	70.9	271	71.9	265	73.5	265	73.4	265	73.5

Results appear in the order in which they were run. Bold underlined text indicates a median measurement.

Operating System Notes

Stack size set to unlimited using "ulimit -s unlimited"
 Transparent Huge Pages enabled with:
 echo always > /sys/kernel/mm/redhat_transparent_hugepage/enabled

Platform Notes

BIOS configuration:
 Intel HT Technology = Disable



SPEC CFP2006 Result

Copyright 2006-2014 Standard Performance Evaluation Corporation

Fujitsu

SPECfp2006 = 85.2

PRIMERGY CX250 S1, Intel Xeon E5-2680, 2.70 GHz

SPECfp_base2006 = 80.5

CPU2006 license: 19

Test sponsor: Fujitsu

Tested by: Fujitsu

Test date: Mar-2012

Hardware Availability: Jun-2012

Software Availability: Dec-2011

General Notes

Environment variables set by runspec before the start of the run:

```
KMP_AFFINITY = "granularity=fine,scatter"
LD_LIBRARY_PATH = "/SPECcpu2006/libs/32:/SPECcpu2006/libs/64"
OMP_NUM_THREADS = "16"
```

Binaries compiled on a system with 1x Core i7-860 CPU + 8GB memory using RHEL5.5

This result was measured on the PRIMERGY CX250 S1. The PRIMERGY CX250 S1 and the PRIMERGY CX270 S1 are electronically equivalent.

For information about Fujitsu please visit: <http://www.fujitsu.com>

Base Compiler Invocation

C benchmarks:

```
icc -m64
```

C++ benchmarks:

```
icpc -m64
```

Fortran benchmarks:

```
ifort -m64
```

Benchmarks using both Fortran and C:

```
icc -m64 ifort -m64
```

Base Portability Flags

```
410.bwaves: -DSPEC_CPU_LP64
416.gamess: -DSPEC_CPU_LP64
433.milc: -DSPEC_CPU_LP64
434.zeusmp: -DSPEC_CPU_LP64
435.gromacs: -DSPEC_CPU_LP64 -nofor_main
436.cactusADM: -DSPEC_CPU_LP64 -nofor_main
437.leslie3d: -DSPEC_CPU_LP64
444.namd: -DSPEC_CPU_LP64
447.dealII: -DSPEC_CPU_LP64
450.soplex: -DSPEC_CPU_LP64
453.povray: -DSPEC_CPU_LP64
454.calculix: -DSPEC_CPU_LP64 -nofor_main
459.GemsFDTD: -DSPEC_CPU_LP64
465.tonto: -DSPEC_CPU_LP64
470.lbm: -DSPEC_CPU_LP64
481.wrf: -DSPEC_CPU_LP64 -DSPEC_CPU_CASE_FLAG -DSPEC_CPU_LINUX
482.sphinx3: -DSPEC_CPU_LP64
```



SPEC CFP2006 Result

Copyright 2006-2014 Standard Performance Evaluation Corporation

Fujitsu

SPECfp2006 = 85.2

PRIMERGY CX250 S1, Intel Xeon E5-2680, 2.70 GHz

SPECfp_base2006 = 80.5

CPU2006 license: 19

Test date: Mar-2012

Test sponsor: Fujitsu

Hardware Availability: Jun-2012

Tested by: Fujitsu

Software Availability: Dec-2011

Base Optimization Flags

C benchmarks:

`-xAVX -ipo -O3 -no-prec-div -static -parallel -opt-prefetch
-ansi-alias`

C++ benchmarks:

`-xAVX -ipo -O3 -no-prec-div -static -opt-prefetch -ansi-alias`

Fortran benchmarks:

`-xAVX -ipo -O3 -no-prec-div -static -parallel -opt-prefetch`

Benchmarks using both Fortran and C:

`-xAVX -ipo -O3 -no-prec-div -static -parallel -opt-prefetch
-ansi-alias`

Peak Compiler Invocation

C benchmarks:

`icc -m64`

C++ benchmarks:

`icpc -m64`

Fortran benchmarks:

`ifort -m64`

Benchmarks using both Fortran and C:

`icc -m64 ifort -m64`

Peak Portability Flags

Same as Base Portability Flags

Peak Optimization Flags

C benchmarks:

`433.milc: -xAVX(pass 2) -prof-gen(pass 1) -ipo(pass 2) -O3(pass 2)
-no-prec-div(pass 2) -prof-use(pass 2) -static -auto-ilp32
-ansi-alias`

`470.lbm: basepeak = yes`

`482.sphinx3: -xAVX -ipo -O3 -no-prec-div -unroll2 -ansi-alias
-parallel`

Continued on next page



SPEC CFP2006 Result

Copyright 2006-2014 Standard Performance Evaluation Corporation

Fujitsu

SPECfp2006 = 85.2

PRIMERGY CX250 S1, Intel Xeon E5-2680, 2.70 GHz

SPECfp_base2006 = 80.5

CPU2006 license: 19

Test date: Mar-2012

Test sponsor: Fujitsu

Hardware Availability: Jun-2012

Tested by: Fujitsu

Software Availability: Dec-2011

Peak Optimization Flags (Continued)

C++ benchmarks:

444.namd: -xAVX(pass 2) -prof-gen(pass 1) -ipo(pass 2) -O3(pass 2)
-no-prec-div(pass 2) -prof-use(pass 2) -fno-alias
-auto-ilp32

447.dealIII: basepeak = yes

450.soplex: basepeak = yes

453.povray: -xAVX(pass 2) -prof-gen(pass 1) -ipo(pass 2) -O3(pass 2)
-no-prec-div(pass 2) -prof-use(pass 2) -unroll4 -ansi-alias

Fortran benchmarks:

410.bwaves: basepeak = yes

416.gamess: -xAVX(pass 2) -prof-gen(pass 1) -ipo(pass 2) -O3(pass 2)
-no-prec-div(pass 2) -prof-use(pass 2) -unroll2
-inline-level=0 -scalar-rep- -static

434.zeusmp: basepeak = yes

437.leslie3d: basepeak = yes

459.GemsFDTD: -xAVX(pass 2) -prof-gen(pass 1) -ipo(pass 2) -O3(pass 2)
-no-prec-div(pass 2) -prof-use(pass 2) -unroll2
-inline-level=0 -opt-prefetch -parallel

465.tonto: -xAVX(pass 2) -prof-gen(pass 1) -ipo(pass 2) -O3(pass 2)
-no-prec-div(pass 2) -prof-use(pass 2) -inline-calloc
-opt-malloc-options=3 -auto -unroll4

Benchmarks using both Fortran and C:

435.gromacs: basepeak = yes

436.cactusADM: basepeak = yes

454.calculix: -xAVX -ipo -O3 -no-prec-div -auto-ilp32 -ansi-alias

481.wrf: basepeak = yes

The flags files that were used to format this result can be browsed at

<http://www.spec.org/cpu2006/flags/Intel-ic12.1-official-linux64.20111122.html>

<http://www.spec.org/cpu2006/flags/Fujitsu-Platform.20120313.01.html>

You can also download the XML flags sources by saving the following links:

<http://www.spec.org/cpu2006/flags/Intel-ic12.1-official-linux64.20111122.xml>

<http://www.spec.org/cpu2006/flags/Fujitsu-Platform.20120313.01.xml>

Standard Performance Evaluation Corporation

info@spec.org

<http://www.spec.org/>

Page 5



SPEC CFP2006 Result

Copyright 2006-2014 Standard Performance Evaluation Corporation

Fujitsu

SPECfp2006 = 85.2

PRIMERGY CX250 S1, Intel Xeon E5-2680, 2.70 GHz

SPECfp_base2006 = 80.5

CPU2006 license: 19

Test sponsor: Fujitsu

Tested by: Fujitsu

Test date: Mar-2012

Hardware Availability: Jun-2012

Software Availability: Dec-2011

SPEC and SPECfp are registered trademarks of the Standard Performance Evaluation Corporation. All other brand and product names appearing in this result are trademarks or registered trademarks of their respective holders.

For questions about this result, please contact the tester.
For other inquiries, please contact webmaster@spec.org.

Tested with SPEC CPU2006 v1.2.
Report generated on Thu Jul 24 10:34:32 2014 by SPEC CPU2006 PS/PDF formatter v6932.
Originally published on 11 July 2012.