



# SPEC® CFP2006 Result

Copyright 2006-2014 Standard Performance Evaluation Corporation

Dell Inc.

SPECfp®2006 = 70.9

PowerEdge M620 (Intel Xeon E5-2630, 2.30 GHz)

SPECfp\_base2006 = 67.3

CPU2006 license: 55

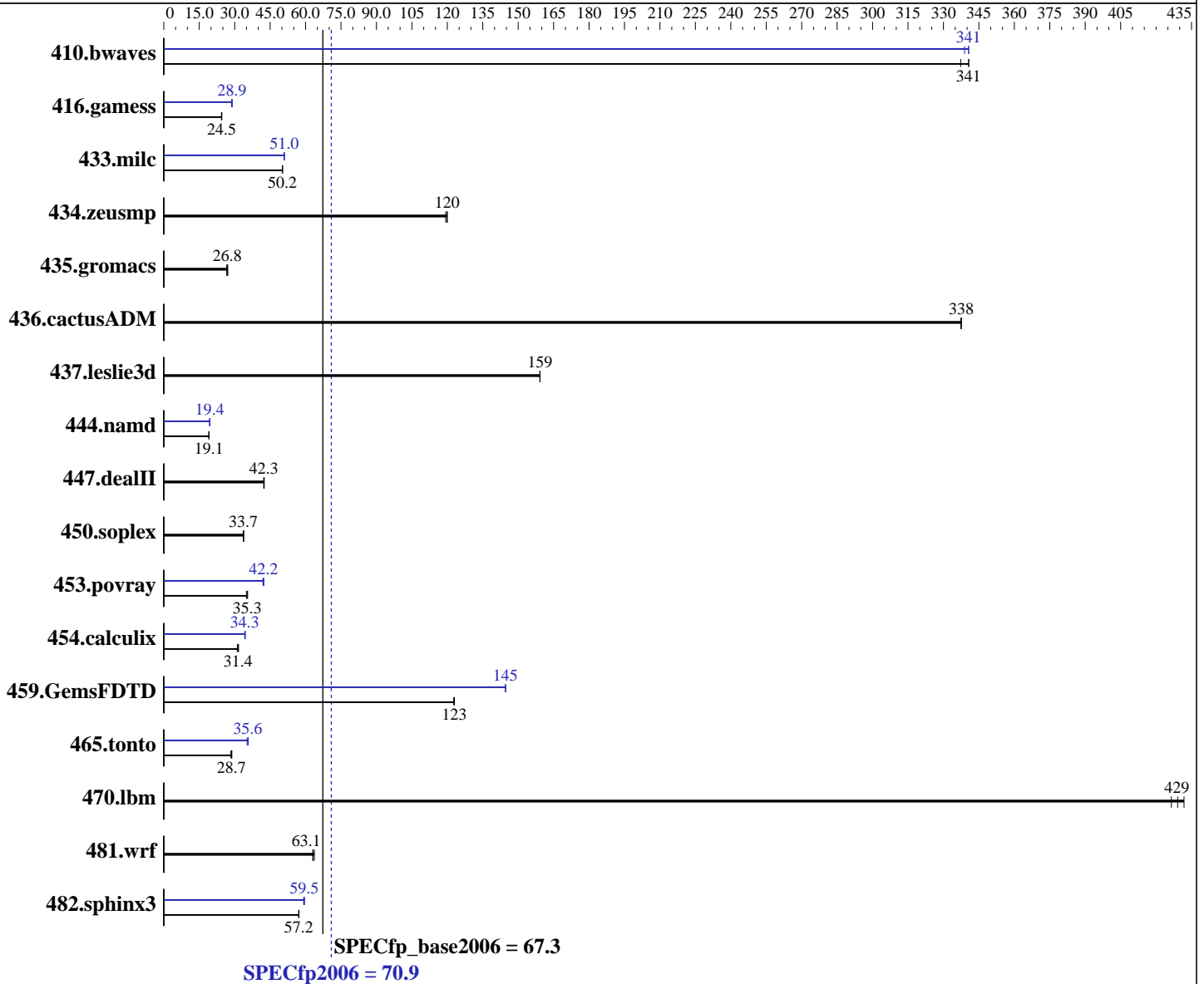
Test date: Mar-2012

Test sponsor: Dell Inc.

Hardware Availability: Mar-2012

Tested by: Dell Inc.

Software Availability: Feb-2012



**Hardware**

CPU Name: Intel Xeon E5-2630  
 CPU Characteristics: Intel Turbo Boost Technology up to 2.80 GHz  
 CPU MHz: 2300  
 FPU: Integrated  
 CPU(s) enabled: 12 cores, 2 chips, 6 cores/chip, 2 threads/core  
 CPU(s) orderable: 1,2 chip  
 Primary Cache: 32 KB I + 32 KB D on chip per core  
 Secondary Cache: 256 KB I+D on chip per core

**Software**

Operating System: SUSE Linux Enterprise Server 11 SP2 (x86\_64) 3.0.13-0.9-default  
 Compiler: C/C++: Version 12.1.0.225 of Intel C++ Studio XE for Linux;  
 Fortran: Version 12.1.0.225 of Intel Fortran Studio XE for Linux  
 Auto Parallel: Yes  
 File System: ext3  
 System State: Run level 3 (add definition here)

Continued on next page

Continued on next page



# SPEC CFP2006 Result

Copyright 2006-2014 Standard Performance Evaluation Corporation

Dell Inc.

SPECfp2006 = 70.9

PowerEdge M620 (Intel Xeon E5-2630, 2.30 GHz)

SPECfp\_base2006 = 67.3

CPU2006 license: 55

Test date: Mar-2012

Test sponsor: Dell Inc.

Hardware Availability: Mar-2012

Tested by: Dell Inc.

Software Availability: Feb-2012

L3 Cache: 15 MB I+D on chip per chip  
 Other Cache: None  
 Memory: 128 GB (16 x 8 GB 2Rx4 PC3-12800R-11, ECC, running at 1333 MHz)  
 Disk Subsystem: 1 x 500 GB 7200 RPM SATA  
 Other Hardware: None

Base Pointers: 64-bit  
 Peak Pointers: 32/64-bit  
 Other Software: None

## Results Table

Benchmark	Base						Peak					
	Seconds	Ratio	Seconds	Ratio	Seconds	Ratio	Seconds	Ratio	Seconds	Ratio	Seconds	Ratio
410.bwaves	40.3	337	39.9	341	<b>39.9</b>	<b>341</b>	39.9	341	<b>39.9</b>	<b>341</b>	40.1	339
416.gamess	803	24.4	797	24.6	<b>800</b>	<b>24.5</b>	<b>677</b>	<b>28.9</b>	676	29.0	683	28.7
433.milc	183	50.2	<b>183</b>	<b>50.2</b>	183	50.2	180	51.0	180	51.0	<b>180</b>	<b>51.0</b>
434.zeusmp	76.3	119	<b>75.9</b>	<b>120</b>	75.9	120	76.3	119	<b>75.9</b>	<b>120</b>	75.9	120
435.gromacs	<b>266</b>	<b>26.8</b>	264	27.1	268	26.6	<b>266</b>	<b>26.8</b>	264	27.1	268	26.6
436.cactusADM	<b>35.4</b>	<b>338</b>	35.4	338	35.4	337	<b>35.4</b>	<b>338</b>	35.4	338	35.4	337
437.leslie3d	<b>59.0</b>	<b>159</b>	59.0	159	59.0	159	<b>59.0</b>	<b>159</b>	59.0	159	59.0	159
444.namd	420	19.1	420	19.1	<b>420</b>	<b>19.1</b>	<b>413</b>	<b>19.4</b>	412	19.4	413	19.4
447.dealII	269	42.5	270	42.3	<b>270</b>	<b>42.3</b>	269	42.5	270	42.3	<b>270</b>	<b>42.3</b>
450.soplex	247	33.8	248	33.7	<b>247</b>	<b>33.7</b>	247	33.8	248	33.7	<b>247</b>	<b>33.7</b>
453.povray	150	35.5	152	35.0	<b>151</b>	<b>35.3</b>	127	42.0	126	42.3	<b>126</b>	<b>42.2</b>
454.calculix	<b>262</b>	<b>31.4</b>	265	31.1	261	31.6	<b>240</b>	<b>34.3</b>	239	34.5	241	34.3
459.GemsFDTD	86.3	123	86.5	123	<b>86.3</b>	<b>123</b>	73.4	145	<b>73.4</b>	<b>145</b>	73.4	145
465.tonto	342	28.8	<b>343</b>	<b>28.7</b>	346	28.4	275	35.7	279	35.3	<b>277</b>	<b>35.6</b>
470.lbm	32.2	426	31.8	432	<b>32.0</b>	<b>429</b>	32.2	426	31.8	432	<b>32.0</b>	<b>429</b>
481.wrf	175	63.7	<b>177</b>	<b>63.1</b>	177	63.1	175	63.7	<b>177</b>	<b>63.1</b>	177	63.1
482.sphinx3	341	57.2	<b>341</b>	<b>57.2</b>	342	57.1	327	59.5	<b>328</b>	<b>59.5</b>	329	59.2

Results appear in the order in which they were run. Bold underlined text indicates a median measurement.

## Operating System Notes

Stack size set to unlimited using "ulimit -s unlimited"

## Platform Notes

System Profile set to Custom  
 CPU Power Management set to Maximum Performance  
 Memory Frequency set to Maximum Performance  
 Turbo Boost set to Enabled  
 C States/C1E set to Enabled  
 Sysinfo program /root/CPU2006-1.2/config/sysinfo.rev6800  
 \$Rev: 6800 \$ \$Date:: 2011-10-11 #\$ 6f2ebdff5032aaa42e583f96b07f99d3  
 running on linux-8itg Mon Mar 12 12:57:13 2012

Continued on next page



# SPEC CFP2006 Result

Copyright 2006-2014 Standard Performance Evaluation Corporation

Dell Inc.

SPECfp2006 = 70.9

PowerEdge M620 (Intel Xeon E5-2630, 2.30 GHz)

SPECfp\_base2006 = 67.3

CPU2006 license: 55

Test date: Mar-2012

Test sponsor: Dell Inc.

Hardware Availability: Mar-2012

Tested by: Dell Inc.

Software Availability: Feb-2012

## Platform Notes (Continued)

This section contains SUT (System Under Test) info as seen by some common utilities. To remove or add to this section, see: <http://www.spec.org/cpu2006/Docs/config.html#sysinfo>

```

From /proc/cpuinfo
model name      : Intel(R) Xeon(R) CPU E5-2630 0 @ 2.30GHz
 2 "physical id"s (chips)
 24 "processors"
cores, siblings (Caution: counting these is hw and system dependent. The
following excerpts from /proc/cpuinfo might not be reliable. Use with
caution.)
  cpu cores    : 6
  siblings     : 12
  physical 0   : cores 0 1 2 3 4 5
  physical 1   : cores 0 1 2 3 4 5
cache size     : 15360 KB

```

```

From /proc/meminfo
MemTotal:      132122692 kB
HugePages_Total: 0
Hugepagesize:  2048 kB

```

```

/usr/bin/lsb_release -d
SUSE Linux Enterprise Server 11 (x86_64)

```

```

From /etc/*release* /etc/*version*
SuSE-release:
SUSE Linux Enterprise Server 11 (x86_64)
VERSION = 11
PATCHLEVEL = 2

```

```

uname -a:
Linux linux-8itg 3.0.13-0.9-default #1 SMP Mon Jan 16 17:33:03 UTC 2012
(54ddfaf) x86_64 x86_64 x86_64 GNU/Linux

```

run-level 3 Mar 12 05:43 last=S

```

SPEC is set to: /root/CPU2006-1.2
Filesystem      Type  Size  Used Avail Use% Mounted on
/dev/sdal        ext3  455G   73G  359G  17% /

```

Additional information from dmidecode:

(End of data from sysinfo program)

## General Notes

Environment variables set by runspec before the start of the run:

```

KMP_AFFINITY = "granularity=fine,scatter"
LD_LIBRARY_PATH = "/root/CPU2006-1.2/libs/32:/root/CPU2006-1.2/libs/64"
OMP_NUM_THREADS = "12"

```

Continued on next page



# SPEC CFP2006 Result

Copyright 2006-2014 Standard Performance Evaluation Corporation

Dell Inc.

SPECfp2006 = 70.9

PowerEdge M620 (Intel Xeon E5-2630, 2.30 GHz)

SPECfp\_base2006 = 67.3

CPU2006 license: 55

Test date: Mar-2012

Test sponsor: Dell Inc.

Hardware Availability: Mar-2012

Tested by: Dell Inc.

Software Availability: Feb-2012

## General Notes (Continued)

Binaries compiled on a system with 1x Core i7-860 CPU + 8GB memory using RHEL5.5

Transparent Huge Pages disabled with:

```
echo never > /sys/kernel/mm/transparent_hugepage/enabled
```

Filesystem page cache cleared with:

```
echo 1> /proc/sys/vm/drop_caches
```

## Base Compiler Invocation

C benchmarks:

```
icc -m64
```

C++ benchmarks:

```
icpc -m64
```

Fortran benchmarks:

```
ifort -m64
```

Benchmarks using both Fortran and C:

```
icc -m64 ifort -m64
```

## Base Portability Flags

```

410.bwaves: -DSPEC_CPU_LP64
416.gamess: -DSPEC_CPU_LP64
433.milc: -DSPEC_CPU_LP64
434.zeusmp: -DSPEC_CPU_LP64
435.gromacs: -DSPEC_CPU_LP64 -nofor_main
436.cactusADM: -DSPEC_CPU_LP64 -nofor_main
437.leslie3d: -DSPEC_CPU_LP64
444.namd: -DSPEC_CPU_LP64
447.dealII: -DSPEC_CPU_LP64
450.soplex: -DSPEC_CPU_LP64
453.povray: -DSPEC_CPU_LP64
454.calculix: -DSPEC_CPU_LP64 -nofor_main
459.GemsFDTD: -DSPEC_CPU_LP64
465.tonto: -DSPEC_CPU_LP64
470.lbm: -DSPEC_CPU_LP64
481.wrf: -DSPEC_CPU_LP64 -DSPEC_CPU_CASE_FLAG -DSPEC_CPU_LINUX
482.sphinx3: -DSPEC_CPU_LP64

```

## Base Optimization Flags

C benchmarks:

```
-xAVX -ipo -O3 -no-prec-div -static -parallel -opt-prefetch
-ansi-alias
```

Continued on next page



# SPEC CFP2006 Result

Copyright 2006-2014 Standard Performance Evaluation Corporation

Dell Inc.

SPECfp2006 = 70.9

PowerEdge M620 (Intel Xeon E5-2630, 2.30 GHz)

SPECfp\_base2006 = 67.3

CPU2006 license: 55

Test date: Mar-2012

Test sponsor: Dell Inc.

Hardware Availability: Mar-2012

Tested by: Dell Inc.

Software Availability: Feb-2012

## Base Optimization Flags (Continued)

C++ benchmarks:

-xAVX -ipo -O3 -no-prec-div -static -opt-prefetch -ansi-alias

Fortran benchmarks:

-xAVX -ipo -O3 -no-prec-div -static -parallel -opt-prefetch

Benchmarks using both Fortran and C:

-xAVX -ipo -O3 -no-prec-div -static -parallel -opt-prefetch  
-ansi-alias

## Peak Compiler Invocation

C benchmarks:

icc -m64

C++ benchmarks:

icpc -m64

Fortran benchmarks:

ifort -m64

Benchmarks using both Fortran and C:

icc -m64 ifort -m64

## Peak Portability Flags

Same as Base Portability Flags

## Peak Optimization Flags

C benchmarks:

433.milc: -xAVX(pass 2) -prof-gen(pass 1) -ipo(pass 2) -O3(pass 2)  
-no-prec-div(pass 2) -prof-use(pass 2) -static -auto-ilp32  
-ansi-alias

470.lbm: basepeak = yes

482.sphinx3: -xAVX -ipo -O3 -no-prec-div -unroll2 -ansi-alias  
-parallel

Continued on next page



# SPEC CFP2006 Result

Copyright 2006-2014 Standard Performance Evaluation Corporation

Dell Inc.

SPECfp2006 = 70.9

PowerEdge M620 (Intel Xeon E5-2630, 2.30 GHz)

SPECfp\_base2006 = 67.3

CPU2006 license: 55

Test date: Mar-2012

Test sponsor: Dell Inc.

Hardware Availability: Mar-2012

Tested by: Dell Inc.

Software Availability: Feb-2012

## Peak Optimization Flags (Continued)

C++ benchmarks:

444.namd: -xAVX(pass 2) -prof-gen(pass 1) -ipo(pass 2) -O3(pass 2)  
-no-prec-div(pass 2) -prof-use(pass 2) -fno-alias  
-auto-ilp32

447.dealII: basepeak = yes

450.soplex: basepeak = yes

453.povray: -xAVX(pass 2) -prof-gen(pass 1) -ipo(pass 2) -O3(pass 2)  
-no-prec-div(pass 2) -prof-use(pass 2) -unroll4 -ansi-alias

Fortran benchmarks:

410.bwaves: -xAVX -ipo -O3 -no-prec-div -opt-prefetch -parallel  
-static

416.gamess: -xAVX(pass 2) -prof-gen(pass 1) -ipo(pass 2) -O3(pass 2)  
-no-prec-div(pass 2) -prof-use(pass 2) -unroll2  
-inline-level=0 -scalar-rep- -static

434.zeusmp: basepeak = yes

437.leslie3d: basepeak = yes

459.GemsFDTD: -xAVX(pass 2) -prof-gen(pass 1) -ipo(pass 2) -O3(pass 2)  
-no-prec-div(pass 2) -prof-use(pass 2) -unroll2  
-inline-level=0 -opt-prefetch -parallel

465.tonto: -xAVX(pass 2) -prof-gen(pass 1) -ipo(pass 2) -O3(pass 2)  
-no-prec-div(pass 2) -prof-use(pass 2) -inline-calloc  
-opt-malloc-options=3 -auto -unroll4

Benchmarks using both Fortran and C:

435.gromacs: basepeak = yes

436.cactusADM: basepeak = yes

454.calculix: -xAVX -ipo -O3 -no-prec-div -auto-ilp32 -ansi-alias

481.wrf: basepeak = yes

The flags files that were used to format this result can be browsed at

<http://www.spec.org/cpu2006/flags/Intel-ic12.1-official-linux64.20111122.html>

<http://www.spec.org/cpu2006/flags/Dell-Platform-Settings-V1.2-revA.20120328.html>



# SPEC CFP2006 Result

Copyright 2006-2014 Standard Performance Evaluation Corporation

Dell Inc.

SPECfp2006 = 70.9

PowerEdge M620 (Intel Xeon E5-2630, 2.30 GHz)

SPECfp\_base2006 = 67.3

CPU2006 license: 55

Test date: Mar-2012

Test sponsor: Dell Inc.

Hardware Availability: Mar-2012

Tested by: Dell Inc.

Software Availability: Feb-2012

You can also download the XML flags sources by saving the following links:

<http://www.spec.org/cpu2006/flags/Intel-ic12.1-official-linux64.20111122.xml>

<http://www.spec.org/cpu2006/flags/Dell-Platform-Settings-V1.2-revA.20120328.xml>

SPEC and SPECfp are registered trademarks of the Standard Performance Evaluation Corporation. All other brand and product names appearing in this result are trademarks or registered trademarks of their respective holders.

For questions about this result, please contact the tester.  
For other inquiries, please contact [webmaster@spec.org](mailto:webmaster@spec.org).

Tested with SPEC CPU2006 v1.2.  
Report generated on Thu Jul 24 02:22:14 2014 by SPEC CPU2006 PS/PDF formatter v6932.  
Originally published on 27 March 2012.