



SPEC® CFP2006 Result

Copyright 2006-2014 Standard Performance Evaluation Corporation

Bull SAS

SPECfp®2006 = 30.4

NovaScale R440 F2 (Intel Xeon E5603, 1.60 GHz)

SPECfp_base2006 = 29.3

CPU2006 license: 20

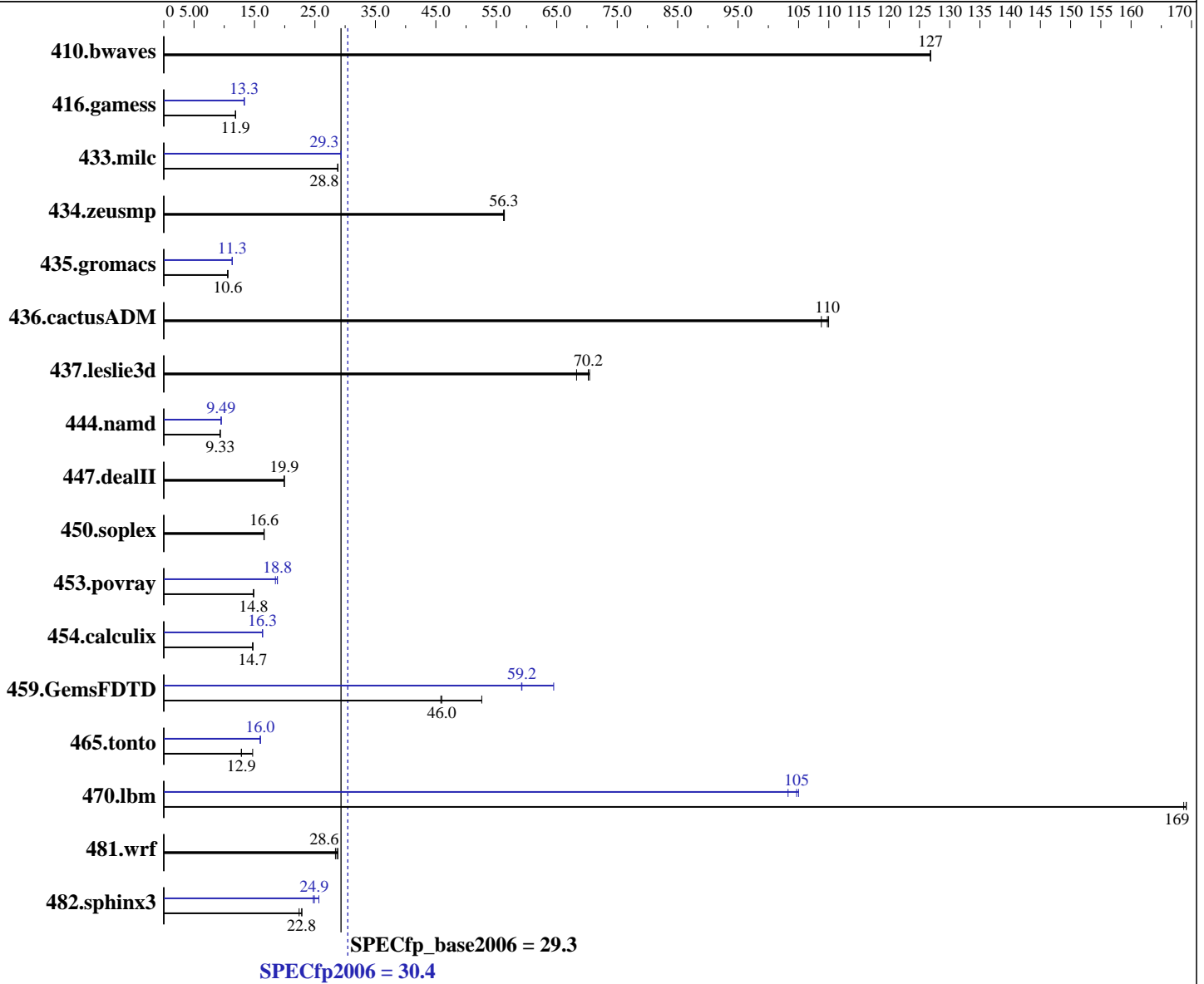
Test date: Mar-2011

Test sponsor: Bull SAS

Hardware Availability: Feb-2011

Tested by: Dell Inc.

Software Availability: Apr-2011



Hardware

CPU Name: Intel Xeon E5603
 CPU Characteristics:
 CPU MHz: 1600
 FPU: Integrated
 CPU(s) enabled: 8 cores, 2 chips, 4 cores/chip
 CPU(s) orderable: 1,2 chips
 Primary Cache: 32 KB I + 32 KB D on chip per core
 Secondary Cache: 256 KB I+D on chip per core

Continued on next page

Software

Operating System: SUSE Linux Enterprise Server 11 SP1 (x86_64), Kernel 2.6.32.12-0.7-default
 Compiler: Intel C++ and Fortran Intel 64 Compiler XE for applications running on Intel 64 Version 12.0 Update 3
 Auto Parallel: Yes
 File System: ext3
 System State: Run level 3 (multi-user)
 Base Pointers: 64-bit

Continued on next page



SPEC CFP2006 Result

Copyright 2006-2014 Standard Performance Evaluation Corporation

Bull SAS

SPECfp2006 = **30.4**

NovaScale R440 F2 (Intel Xeon E5603, 1.60 GHz)

SPECfp_base2006 = **29.3**

CPU2006 license: 20

Test date: Mar-2011

Test sponsor: Bull SAS

Hardware Availability: Feb-2011

Tested by: Dell Inc.

Software Availability: Apr-2011

L3 Cache: 4 MB I+D on chip per chip
 Other Cache: None
 Memory: 48 GB (12 x 4 GB 2Rx4 PC3-10600R-9, ECC, running at 1066 MHz)
 Disk Subsystem: 1 x 146 GB 15000 RPM SAS
 Other Hardware: None

Peak Pointers: 32/64-bit
 Other Software: None

Results Table

Benchmark	Base						Peak					
	Seconds	Ratio	Seconds	Ratio	Seconds	Ratio	Seconds	Ratio	Seconds	Ratio	Seconds	Ratio
410.bwaves	107	127	107	127	107	127	107	127	107	127	107	127
416.gamess	1651	11.9	1651	11.9	1649	11.9	1474	13.3	1470	13.3	1469	13.3
433.milc	319	28.8	319	28.8	319	28.8	313	29.3	313	29.3	313	29.3
434.zeusmp	162	56.3	162	56.2	162	56.3	162	56.3	162	56.2	162	56.3
435.gromacs	674	10.6	676	10.6	675	10.6	630	11.3	632	11.3	631	11.3
436.cactusADM	110	109	109	110	109	110	110	109	109	110	109	110
437.leslie3d	133	70.4	134	70.2	138	68.3	133	70.4	134	70.2	138	68.3
444.namd	859	9.33	860	9.32	859	9.33	846	9.48	845	9.50	845	9.49
447.dealII	574	19.9	574	19.9	574	19.9	574	19.9	574	19.9	574	19.9
450.soplex	503	16.6	503	16.6	502	16.6	503	16.6	503	16.6	502	16.6
453.povray	358	14.9	358	14.8	358	14.8	283	18.8	288	18.5	283	18.8
454.calculix	559	14.8	561	14.7	562	14.7	505	16.3	505	16.3	505	16.3
459.GemsFDTD	231	46.0	202	52.6	232	45.8	165	64.5	179	59.2	179	59.2
465.tonto	669	14.7	766	12.9	767	12.8	615	16.0	616	16.0	617	16.0
470.lbm	81.2	169	81.2	169	81.4	169	133	103	131	105	131	105
481.wrf	390	28.6	393	28.4	388	28.8	390	28.6	393	28.4	388	28.8
482.sphinx3	853	22.8	855	22.8	871	22.4	783	24.9	788	24.7	760	25.7

Results appear in the order in which they were run. Bold underlined text indicates a median measurement.

Operating System Notes

```
'ulimit -s unlimited' was used to set the stacksize to unlimited prior to run
'mount -t hugetlbfs nodev /mnt/hugepages' was used to enable large pages
echo 900 > /proc/sys/vm/nr_hugepages
export HUGETLB_MORECORE=yes
export LD_PRELOAD=/usr/lib64/libhugetlbfs.so
```

Platform Notes

BIOS Settings:
 Power Management = Maximum Performance (Default = Active Power Controller)
 Data Reuse = Disabled (Default = Enabled)



SPEC CFP2006 Result

Copyright 2006-2014 Standard Performance Evaluation Corporation

Bull SAS

SPECfp2006 = 30.4

NovaScale R440 F2 (Intel Xeon E5603, 1.60 GHz)

SPECfp_base2006 = 29.3

CPU2006 license: 20
Test sponsor: Bull SAS
Tested by: Dell Inc.

Test date: Mar-2011
Hardware Availability: Feb-2011
Software Availability: Apr-2011

General Notes

OMP_NUM_THREADS set to number of cores
The Dell PowerEdge R610 and the Bull NovaScale R440 F2 models are electronically equivalent. The results have been measured on a Dell PowerEdge R610 model. Binaries were compiled on RHEL5.5

Base Compiler Invocation

C benchmarks:
icc -m64

C++ benchmarks:
icpc -m64

Fortran benchmarks:
ifort -m64

Benchmarks using both Fortran and C:
icc -m64 ifort -m64

Base Portability Flags

410.bwaves: -DSPEC_CPU_LP64
416.gamess: -DSPEC_CPU_LP64
433.milc: -DSPEC_CPU_LP64
434.zeusmp: -DSPEC_CPU_LP64
435.gromacs: -DSPEC_CPU_LP64 -nofor_main
436.cactusADM: -DSPEC_CPU_LP64 -nofor_main
437.leslie3d: -DSPEC_CPU_LP64
444.namd: -DSPEC_CPU_LP64
447.deallI: -DSPEC_CPU_LP64
450.soplex: -DSPEC_CPU_LP64
453.povray: -DSPEC_CPU_LP64
454.calculix: -DSPEC_CPU_LP64 -nofor_main
459.GemsFDTD: -DSPEC_CPU_LP64
465.tonto: -DSPEC_CPU_LP64
470.lbm: -DSPEC_CPU_LP64
481.wrf: -DSPEC_CPU_LP64 -DSPEC_CPU_CASE_FLAG -DSPEC_CPU_LINUX
482.sphinx3: -DSPEC_CPU_LP64

Base Optimization Flags

C benchmarks:
-xSSE4.2 -ipo -O3 -no-prec-div -static -parallel -opt-prefetch
-ansi-alias

Continued on next page



SPEC CFP2006 Result

Copyright 2006-2014 Standard Performance Evaluation Corporation

Bull SAS

SPECfp2006 = 30.4

NovaScale R440 F2 (Intel Xeon E5603, 1.60 GHz)

SPECfp_base2006 = 29.3

CPU2006 license: 20

Test date: Mar-2011

Test sponsor: Bull SAS

Hardware Availability: Feb-2011

Tested by: Dell Inc.

Software Availability: Apr-2011

Base Optimization Flags (Continued)

C++ benchmarks:

`-xSSE4.2 -ipo -O3 -no-prec-div -static -opt-prefetch -ansi-alias`

Fortran benchmarks:

`-xSSE4.2 -ipo -O3 -no-prec-div -static -parallel -opt-prefetch`

Benchmarks using both Fortran and C:

`-xSSE4.2 -ipo -O3 -no-prec-div -static -parallel -opt-prefetch
-ansi-alias`

Peak Compiler Invocation

C benchmarks:

`icc -m64`

C++ benchmarks:

`icpc -m64`

Fortran benchmarks:

`ifort -m64`

Benchmarks using both Fortran and C:

`icc -m64 ifort -m64`

Peak Portability Flags

Same as Base Portability Flags

Peak Optimization Flags

C benchmarks:

433.milc: `-xSSE4.2(pass 2) -prof-gen(pass 1) -ipo(pass 2) -O3(pass 2)
-no-prec-div(pass 2) -prof-use(pass 2) -static -auto-ilp32
-ansi-alias`

470.lbm: `-xSSE4.2(pass 2) -prof-gen(pass 1) -ipo(pass 2) -O3(pass 2)
-no-prec-div(pass 2) -prof-use(pass 2) -parallel
-ansi-alias -static -auto-ilp32`

482.sphinx3: `-xSSE4.2 -ipo -O3 -no-prec-div -unroll2 -ansi-alias
-parallel`

Continued on next page



SPEC CFP2006 Result

Copyright 2006-2014 Standard Performance Evaluation Corporation

Bull SAS

SPECfp2006 = 30.4

NovaScale R440 F2 (Intel Xeon E5603, 1.60 GHz)

SPECfp_base2006 = 29.3

CPU2006 license: 20

Test sponsor: Bull SAS

Tested by: Dell Inc.

Test date: Mar-2011

Hardware Availability: Feb-2011

Software Availability: Apr-2011

Peak Optimization Flags (Continued)

C++ benchmarks:

444.namd: -xSSE4.2(pass 2) -prof-gen(pass 1) -ipo(pass 2) -O3(pass 2)
-no-prec-div(pass 2) -prof-use(pass 2) -fno-alias
-auto-ilp32

447.dealIII: basepeak = yes

450.soplex: basepeak = yes

453.povray: -xSSE4.2(pass 2) -prof-gen(pass 1) -ipo(pass 2) -O3(pass 2)
-no-prec-div(pass 2) -prof-use(pass 2) -unroll4 -ansi-alias
-B /usr/share/libhugetlbfs/ -Wl,-melf_x86_64 -Wl,-hugetlbfs-link=BDT

Fortran benchmarks:

410.bwaves: basepeak = yes

416.gamess: -xSSE4.2(pass 2) -prof-gen(pass 1) -ipo(pass 2) -O3(pass 2)
-no-prec-div(pass 2) -prof-use(pass 2) -unroll2
-inline-level=0 -scalar-rep- -static

434.zeusmp: basepeak = yes

437.leslie3d: basepeak = yes

459.GemsFDTD: -xSSE4.2(pass 2) -prof-gen(pass 1) -ipo(pass 2) -O3(pass 2)
-no-prec-div(pass 2) -prof-use(pass 2) -unroll2
-inline-level=0 -opt-prefetch -parallel
-B /usr/share/libhugetlbfs/ -Wl,-melf_x86_64 -Wl,-hugetlbfs-link=BDT

465.tonto: -xSSE4.2(pass 2) -prof-gen(pass 1) -ipo(pass 2) -O3(pass 2)
-no-prec-div(pass 2) -prof-use(pass 2) -inline-calloc
-opt-malloc-options=3 -auto -unroll4
-B /usr/share/libhugetlbfs/ -Wl,-melf_x86_64 -Wl,-hugetlbfs-link=BDT

Benchmarks using both Fortran and C:

435.gromacs: -xSSE4.2(pass 2) -prof-gen(pass 1) -ipo(pass 2) -O3(pass 2)
-no-prec-div(pass 2) -prof-use(pass 2) -static -auto-ilp32
-ansi-alias

436.cactusADM: basepeak = yes

454.calculix: -xSSE4.2 -ipo -O3 -no-prec-div -auto-ilp32 -ansi-alias

481.wrf: basepeak = yes



SPEC CFP2006 Result

Copyright 2006-2014 Standard Performance Evaluation Corporation

Bull SAS

SPECfp2006 = 30.4

NovaScale R440 F2 (Intel Xeon E5603, 1.60 GHz)

SPECfp_base2006 = 29.3

CPU2006 license: 20

Test sponsor: Bull SAS

Tested by: Dell Inc.

Test date: Mar-2011

Hardware Availability: Feb-2011

Software Availability: Apr-2011

The flags files that were used to format this result can be browsed at

<http://www.spec.org/cpu2006/flags/Intel-ic12.0-linux64-revB.html>

<http://www.spec.org/cpu2006/flags/Intel-Linux64-Platform.20110308.html>

You can also download the XML flags sources by saving the following links:

<http://www.spec.org/cpu2006/flags/Intel-ic12.0-linux64-revB.xml>

<http://www.spec.org/cpu2006/flags/Intel-Linux64-Platform.20110308.xml>

SPEC and SPECfp are registered trademarks of the Standard Performance Evaluation Corporation. All other brand and product names appearing in this result are trademarks or registered trademarks of their respective holders.

For questions about this result, please contact the tester.
For other inquiries, please contact webmaster@spec.org.

Tested with SPEC CPU2006 v1.1.
Report generated on Wed Jul 23 15:43:27 2014 by SPEC CPU2006 PS/PDF formatter v6932.
Originally published on 29 March 2011.